



## VERIFICATION REPORT

Test Results (Unit: mg/kg)

(1) To determine Lead, Cadmium, Mercury, Hexavalent Chromium, PBBs&PBDEs:

TESTED MATERIAL	SCHEME	TARGET RoHS SUBSTANCES	TEST METHOD USED	XRF RESULT (in mg/kg)	CHEMICAL TEST RESULT (in mg/kg)
1	1	All	XRF	Cd: N.D	N/T
				Cr: N.D	
				Pb: N.D	
				Hg: N.D	
				Br: N.D	
2	2	All	XRF	Cd: N.D	N/T
				Cr: N.D	
				Pb: N.D	
				Hg: N.D	
				Br: N.D	
3	3	All	XRF	Cd: N.D	N/T
				Cr: N.D	
				Pb: N.D	
				Hg: N.D	
				Br: N.D	
4	4	All	XRF	Cd: N.D	N/T
				Cr: N.D	
				Pb: N.D	
				Hg: N.D	
				Br: N.D	
5	5	All	XRF	Cd: N.D	N/T
				Cr: N.D	
				Pb: N.D	
				Hg: N.D	
				Br: N.D	
6	6	All	XRF	Cd: N.D	N/T
				Cr: N.D	
				Pb: N.D	
				Hg: N.D	
				Br: N.D	
7	7	All	XRF	Cd: N.D	N/T
				Cr: N.D	
				Pb: N.D	
				Hg: N.D	
				Br: N.D	
8	8	All	XRF	Cd: N.D	N/T
				Cr: N.D	
				Pb: N.D	
				Hg: N.D	
				Br: N.D	

## VERIFICATION REPORT

TESTED MATERIAL	SCHEME	TARGET RoHS SUBSTANCES	TEST METHOD USED	XRF RESULT (in mg/kg)	CHEMICAL TEST RESULT (in mg/kg)
9	9	All	XRF + Chemical	Cd: N.D	Cr <sup>6+</sup> : Negative
				Cr: Inconclusive	
				Pb: N.D	
				Hg: N.D	
				Br: N.D	
				Cd: N.D	
				Cr: Inconclusive	
				Pb: N.D	
10	10	All	XRF + Chemical	Hg: N.D	Cr <sup>6+</sup> : Negative
				Br: N.D	
				Cd: N.D	
				Cr: Inconclusive	
				Pb: N.D	
				Hg: N.D	
				Br: N.D	
				Cd: N.D	
11	11	All	XRF + Chemical	Cr: Inconclusive	Cr <sup>6+</sup> : Negative
				Pb: N.D	
				Hg: N.D	
				Br: N.D	
				Cd: N.D	
				Cr: Inconclusive	
				Pb: N.D	
				Hg: N.D	
12	12	All	XRF + Chemical	Br: N.D	Cr <sup>6+</sup> : Negative
				Cd: N.D	
				Cr: Inconclusive	
				Pb: N.D	
				Hg: N.D	
				Br: N.D	
				Cd: N.D	
				Cr: Inconclusive	
13	13	All	XRF + Chemical	Pb: N.D	Cr <sup>6+</sup> : Negative
				Hg: N.D	
				Br: N.D	
				Cd: N.D	
				Cr: Inconclusive	
				Pb: N.D	
				Hg: N.D	
				Br: N.D	
14	14	All	XRF + Chemical	Cd: N.D	Cr <sup>6+</sup> : Negative
				Cr: Inconclusive	
				Pb: N.D	
				Hg: N.D	
				Br: N.D	
				Cd: N.D	
				Cr: N.D	
				Pb: N.D	
15	15	All	XRF	Hg: N.D	N/T
				Br: N.D	
				Cd: N.D	
				Cr: N.D	
				Pb: N.D	
				Hg: N.D	
				Br: N.D	
				Cd: N.D	
16	16	All	XRF	Cr: N.D	N/T
				Pb: N.D	
				Hg: N.D	
				Br: N.D	
				Cd: N.D	
				Cr: N.D	
				Pb: N.D	
				Hg: N.D	
17	17	All	XRF	Br: N.D	N/T
				Cd: N.D	
				Cr: N.D	
				Pb: N.D	
				Hg: N.D	
				Br: N.D	
				Cd: N.D	
				Cr: N.D	

## VERIFICATION REPORT

TESTED MATERIAL	SCHEME	TARGET RoHS SUBSTANCES	TEST METHOD USED	XRF RESULT (in mg/kg)	CHEMICAL TEST RESULT (in mg/kg)
18	18	All	XRF	Cd: N.D	N/T
				Cr: N.D	
				Pb: N.D	
				Hg: N.D	
				Br: N.D	
19	19	All	XRF	Cd: N.D	N/T
				Cr: N.D	
				Pb: N.D	
				Hg: N.D	
				Br: N.D	
20	20	All	XRF	Cd: N.D	N/T
				Cr: N.D	
				Pb: N.D	
				Hg: N.D	
				Br: N.D	
21	21	All	XRF	Cd: N.D	N/T
				Cr: N.D	
				Pb: N.D	
				Hg: N.D	
				Br: N.D	
22	22	All	XRF	Cd: N.D	N/T
				Cr: N.D	
				Pb: N.D	
				Hg: N.D	
				Br: N.D	
23	23	All	XRF	Cd: N.D	N/T
				Cr: N.D	
				Pb: N.D	
				Hg: N.D	
				Br: N.D	
24	24	All	XRF	Cd: N.D	N/T
				Cr: N.D	
				Pb: N.D	
				Hg: N.D	
				Br: N.D	
25	25	All	XRF	Cd: N.D	N/T
				Cr: N.D	
				Pb: N.D	
				Hg: N.D	
				Br: N.D	
26	26	All	XRF	Cd: N.D	N/T
				Cr: N.D	
				Pb: N.D	
				Hg: N.D	
				Br: N.D	

## VERIFICATION REPORT

TESTED MATERIAL	SCHEME	TARGET RoHS SUBSTANCES	TEST METHOD USED	XRF RESULT (in mg/kg)	CHEMICAL TEST RESULT (in mg/kg)
27	27	All	XRF + Chemical	Cd: N.D	PBBs: N.D(<5.0) PBDEs: N.D(<5.0)
				Cr: N.D	
				Pb: N.D	
				Hg: N.D	
				Br: Inconclusive	
28	28	All	XRF	Cd: N.D	N/T
				Cr: N.D	
				Pb: N.D	
				Hg: N.D	
				Br: N.D	
29	29	All	XRF	Cd: N.D	N/T
				Cr: N.D	
				Pb: N.D	
				Hg: N.D	
				Br: N.D	
30	30	All	XRF	Cd: N.D	N/T
				Cr: N.D	
				Pb: N.D	
				Hg: N.D	
				Br: N.D	
31	31	All	XRF + Chemical	Cd: N.D	PBBs: N.D(<5.0) PBDEs: N.D(<5.0)
				Cr: N.D	
				Pb: N.D	
				Hg: N.D	
				Br: Inconclusive	
32	32	All	XRF	Cd: N.D	N/T
				Cr: N.D	
				Pb: N.D	
				Hg: N.D	
				Br: N.D	
33	33	All	XRF + Chemical	Cd: N.D	PBBs: N.D(<5.0) PBDEs: N.D(<5.0)
				Cr: N.D	
				Pb: N.D	
				Hg: N.D	
				Br: Inconclusive	
34	34	All	XRF	Cd: N.D	N/T
				Cr: N.D	
				Pb: N.D	
				Hg: N.D	
				Br: N.D	
35	35	All	XRF	Cd: N.D	N/T
				Cr: N.D	
				Pb: N.D	
				Hg: N.D	
				Br: N.D	

## VERIFICATION REPORT

TESTED MATERIAL	SCHEME	TARGET RoHS SUBSTANCES	TEST METHOD USED	XRF RESULT (in mg/kg)	CHEMICAL TEST RESULT (in mg/kg)
36	36	All	XRF	Cd: N.D	N/T
				Cr: N.D	
				Pb: N.D	
				Hg: N.D	
				Br: N.D	
37	37	All	XRF + Chemical	Cd: N.D	Cr <sup>6+</sup> : N.D(<8.0)
				Cr: Inconclusive	
				Pb: N.D	
				Hg: N.D	
				Br: N.D	
38	38	All	XRF	Cd: N.D	N/T
				Cr: N.D	
				Pb: N.D	
				Hg: N.D	
				Br: N.D	
39	39	All	XRF	Cd: N.D	N/T
				Cr: N.D	
				Pb: N.D	
				Hg: N.D	
				Br: N.D	
40	40	All	XRF	Cd: N.D	N/T
				Cr: N.D	
				Pb: N.D	
				Hg: N.D	
				Br: N.D	
41	41	All	XRF + Chemical	Cd: N.D	PBBs: N.D(<5.0) PBDEs: N.D(<5.0)
				Cr: N.D	
				Pb: N.D	
				Hg: N.D	
				Br: Inconclusive	
42	42	All	XRF + Chemical	Cd: N.D	PBBs: N.D(<5.0) PBDEs: N.D(<5.0)
				Cr: N.D	
				Pb: N.D	
				Hg: N.D	
				Br: Inconclusive	
43	43	All	XRF	Cd: N.D	N/T
				Cr: N.D	
				Pb: N.D	
				Hg: N.D	
				Br: N.D	
44	44	All	XRF	Cd: N.D	N/T
				Cr: N.D	
				Pb: N.D	
				Hg: N.D	
				Br: N.D	

## VERIFICATION REPORT

TESTED MATERIAL	SCHEME	TARGET RoHS SUBSTANCES	TEST METHOD USED	XRF RESULT (in mg/kg)	CHEMICAL TEST RESULT (in mg/kg)
45	45	All	XRF + Chemical	Cd: N.D	PBBs: N.D(<5.0) PBDEs: N.D(<5.0)
				Cr: N.D	
				Pb: N.D	
				Hg: N.D	
				Br: Inconclusive	
46	46	All	XRF + Chemical	Cd: N.D	PBBs: N.D(<5.0) PBDEs: N.D(<5.0)
				Cr: N.D	
				Pb: N.D	
				Hg: N.D	
				Br: Inconclusive	
47	47	All	XRF + Chemical	Cd: N.D	PBBs: N.D(<5.0) PBDEs: N.D(<5.0)
				Cr: N.D	
				Pb: N.D	
				Hg: N.D	
				Br: Inconclusive	
48	48	All	XRF + Chemical	Cd: N.D	PBBs: N.D(<5.0) PBDEs: N.D(<5.0)
				Cr: N.D	
				Pb: N.D	
				Hg: N.D	
				Br: Inconclusive	
49	49	All	XRF	Cd: N.D	N/T
				Cr: N.D	
				Pb: N.D	
				Hg: N.D	
				Br: N.D	
50	50	All	XRF + Chemical	Cd: N.D	Cr <sup>6+</sup> : Negative
				Cr: Inconclusive	
				Pb: N.D	
				Hg: N.D	
				Br: N.D	
51	51	All	XRF	Cd: N.D	N/T
				Cr: N.D	
				Pb: N.D	
				Hg: N.D	
				Br: N.D	
52	52	All	XRF	Cd: N.D	N/T
				Cr: N.D	
				Pb: N.D	
				Hg: N.D	
				Br: N.D	
53	53	All	XRF	Cd: See remark	N/T
				Cr: N.D	
				Pb: N.D	
				Hg: N.D	
				Br: N.D	

### VERIFICATION REPORT

TESTED MATERIAL	SCHEME	TARGET RoHS SUBSTANCES	TEST METHOD USED	XRF RESULT (in mg/kg)	CHEMICAL TEST RESULT (in mg/kg)
54	54	All	XRF	Cd: N.D	N/T
				Cr: N.D	
				Pb: N.D	
				Hg: N.D	
				Br: N.D	
55	55	All	XRF	Cd: N.D	N/T
				Cr: N.D	
				Pb: N.D	
				Hg: N.D	
				Br: N.D	
56	56	All	XRF	Cd: N.D	N/T
				Cr: N.D	
				Pb: N.D	
				Hg: N.D	
				Br: N.D	
57	57	All	XRF	Cd: N.D	N/T
				Cr: N.D	
				Pb: N.D	
				Hg: N.D	
				Br: N.D	
58	58	All	XRF	Cd: N.D	N/T
				Cr: N.D	
				Pb: N.D	
				Hg: N.D	
				Br: N.D	
59	59	All	XRF	Cd: N.D	N/T
				Cr: N.D	
				Pb: N.D	
				Hg: N.D	
				Br: N.D	
60	60	All	XRF	Cd: N.D	N/T
				Cr: N.D	
				Pb: N.D	
				Hg: N.D	
				Br: N.D	
61	61	All	XRF	Cd: N.D	N/T
				Cr: N.D	
				Pb: N.D	
				Hg: N.D	
				Br: N.D	
62	62	All	XRF + Chemical	Cd: N.D	PBBs: N.D(<5.0) PBDEs: N.D(<5.0)
				Cr: N.D	
				Pb: N.D	
				Hg: N.D	
				Br: Inconclusive	



## VERIFICATION REPORT

TESTED MATERIAL	SCHEME	TARGET RoHS SUBSTANCES	TEST METHOD USED	XRF RESULT (in mg/kg)	CHEMICAL TEST RESULT (in mg/kg)
63	63	All	XRF	Cd: N.D	N/T
				Cr: N.D	
				Pb: N.D	
				Hg: N.D	
				Br: N.D	
64	64	All	XRF	Cd: N.D	N/T
				Cr: N.D	
				Pb: N.D	
				Hg: N.D	
				Br: N.D	
65	65	All	XRF + Chemical	Cd: N.D	PBBs: N.D(<5.0) PBDEs: N.D(<5.0)
				Cr: N.D	
				Pb: N.D	
				Hg: N.D	
				Br: Inconclusive	
66	66	All	XRF	Cd: N.D	N/T
				Cr: N.D	
				Pb: N.D	
				Hg: N.D	
				Br: N.D	
67	67	All	XRF	Cd: N.D	N/T
				Cr: N.D	
				Pb: N.D	
				Hg: N.D	
				Br: N.D	
68	68	All	XRF	Cd: N.D	N/T
				Cr: N.D	
				Pb: N.D	
				Hg: N.D	
				Br: N.D	
69	69	All	XRF	Cd: N.D	N/T
				Cr: N.D	
				Pb: N.D	
				Hg: N.D	
				Br: N.D	
70	70	All	XRF	Cd: N.D	N/T
				Cr: N.D	
				Pb: N.D	
				Hg: N.D	
				Br: N.D	
71	71	All	XRF	Cd: N.D	N/T
				Cr: N.D	
				Pb: N.D	
				Hg: N.D	
				Br: N.D	

## VERIFICATION REPORT

TESTED MATERIAL	SCHEME	TARGET RoHS SUBSTANCES	TEST METHOD USED	XRF RESULT (in mg/kg)	CHEMICAL TEST RESULT (in mg/kg)
72	72	All	XRF	Cd: N.D	N/T
				Cr: N.D	
				Pb: N.D	
				Hg: N.D	
				Br: N.D	
73	73	All	XRF	Cd: N.D	N/T
				Cr: N.D	
				Pb: N.D	
				Hg: N.D	
				Br: N.D	
74	74	All	XRF	Cd: N.D	N/T
				Cr: N.D	
				Pb: N.D	
				Hg: N.D	
				Br: N.D	
75	75	All	XRF	Cd: N.D	N/T
				Cr: N.D	
				Pb: N.D	
				Hg: N.D	
				Br: N.D	
76	76	All	XRF	Cd: N.D	N/T
				Cr: N.D	
				Pb: N.D	
				Hg: N.D	
				Br: N.D	
77	77	All	XRF	Cd: N.D	N/T
				Cr: N.D	
				Pb: N.D	
				Hg: N.D	
				Br: N.D	
78	78	All	XRF	Cd: N.D	N/T
				Cr: N.D	
				Pb: N.D	
				Hg: N.D	
				Br: N.D	
79	79	All	XRF	Cd: N.D	N/T
				Cr: N.D	
				Pb: N.D	
				Hg: N.D	
				Br: N.D	
80	80	All	XRF	Cd: N.D	N/T
				Cr: N.D	
				Pb: N.D	
				Hg: N.D	
				Br: N.D	

## VERIFICATION REPORT

TESTED MATERIAL	SCHEME	TARGET RoHS SUBSTANCES	TEST METHOD USED	XRF RESULT (in mg/kg)	CHEMICAL TEST RESULT (in mg/kg)
81	81	All	XRF	Cd: N.D	N/T
				Cr: N.D	
				Pb: N.D	
				Hg: N.D	
				Br: N.D	
82	82	All	XRF	Cd: N.D	N/T
				Cr: N.D	
				Pb: N.D	
				Hg: N.D	
				Br: N.D	
83	83	All	XRF	Cd: N.D	N/T
				Cr: N.D	
				Pb: N.D	
				Hg: N.D	
				Br: N.D	
84	84	All	XRF	Cd: N.D	N/T
				Cr: N.D	
				Pb: N.D	
				Hg: N.D	
				Br: N.D	
85	85	All	XRF	Cd: N.D	N/T
				Cr: N.D	
				Pb: N.D	
				Hg: N.D	
				Br: N.D	
86	86	All	XRF	Cd: N.D	N/T
				Cr: N.D	
				Pb: N.D	
				Hg: N.D	
				Br: N.D	
87	87	All	XRF + Chemical	Cd: N.D	PBBs: N.D(<5.0) PBDEs: N.D(<5.0)
				Cr: N.D	
				Pb: N.D	
				Hg: N.D	
				Br: Inconclusive	
88	88	All	XRF	Cd: N.D	N/T
				Cr: N.D	
				Pb: N.D	
				Hg: N.D	
				Br: N.D	
89	89	All	XRF	Cd: N.D	N/T
				Cr: N.D	
				Pb: N.D	
				Hg: N.D	
				Br: N.D	

## VERIFICATION REPORT

TESTED MATERIAL	SCHEME	TARGET RoHS SUBSTANCES	TEST METHOD USED	XRF RESULT (in mg/kg)	CHEMICAL TEST RESULT (in mg/kg)
90	90	All	XRF	Cd: N.D	N/T
				Cr: N.D	
				Pb: N.D	
				Hg: N.D	
				Br: N.D	
91	91	All	XRF	Cd: N.D	N/T
				Cr: N.D	
				Pb: N.D	
				Hg: N.D	
				Br: N.D	
92	92	All	XRF	Cd: N.D	N/T
				Cr: N.D	
				Pb: N.D	
				Hg: N.D	
				Br: N.D	
93	93	All	XRF	Cd: N.D	N/T
				Cr: N.D	
				Pb: N.D	
				Hg: N.D	
				Br: N.D	
94	94	All	XRF	Cd: N.D	N/T
				Cr: N.D	
				Pb: N.D	
				Hg: N.D	
				Br: N.D	
95	95	All	XRF	Cd: N.D	N/T
				Cr: N.D	
				Pb: N.D	
				Hg: N.D	
				Br: N.D	
96	96	All	XRF	Cd: N.D	N/T
				Cr: N.D	
				Pb: N.D	
				Hg: N.D	
				Br: N.D	
97	97	All	XRF	Cd: N.D	N/T
				Cr: N.D	
				Pb: N.D	
				Hg: N.D	
				Br: N.D	
98	98	All	XRF	Cd: N.D	N/T
				Cr: N.D	
				Pb: N.D	
				Hg: N.D	
				Br: N.D	

### VERIFICATION REPORT

TESTED MATERIAL	SCHEME	TARGET RoHS SUBSTANCES	TEST METHOD USED	XRF RESULT (in mg/kg)	CHEMICAL TEST RESULT (in mg/kg)
99	99	All	XRF	Cd: N.D	N/T
				Cr: N.D	
				Pb: N.D	
				Hg: N.D	
				Br: N.D	
100	100	All	XRF	Cd: N.D	N/T
				Cr: N.D	
				Pb: N.D	
				Hg: N.D	
				Br: N.D	
101	101	All	XRF	Cd: N.D	N/T
				Cr: N.D	
				Pb: N.D	
				Hg: N.D	
				Br: N.D	
102	102	All	XRF	Cd: N.D	N/T
				Cr: N.D	
				Pb: N.D	
				Hg: N.D	
				Br: N.D	
103	103	All	XRF	Cd: N.D	N/T
				Cr: N.D	
				Pb: N.D	
				Hg: N.D	
				Br: N.D	
104	104	All	XRF	Cd: N.D	N/T
				Cr: N.D	
				Pb: N.D	
				Hg: N.D	
				Br: N.D	
105	105	All	XRF	Cd: N.D	N/T
				Cr: N.D	
				Pb: N.D	
				Hg: N.D	
				Br: N.D	
106	106	All	XRF	Cd: N.D	N/T
				Cr: N.D	
				Pb: N.D	
				Hg: N.D	
				Br: N.D	
107	107	All	XRF	Cd: N.D	N/T
				Cr: N.D	
				Pb: N.D	
				Hg: N.D	
				Br: N.D	

## VERIFICATION REPORT

TESTED MATERIAL	SCHEME	TARGET RoHS SUBSTANCES	TEST METHOD USED	XRF RESULT (in mg/kg)	CHEMICAL TEST RESULT (in mg/kg)
108	108	All	XRF	Cd: N.D	N/T
				Cr: N.D	
				Pb: N.D	
				Hg: N.D	
				Br: N.D	
109	109	All	XRF	Cd: N.D	N/T
				Cr: N.D	
				Pb: N.D	
				Hg: N.D	
				Br: N.D	
110	110	All	XRF	Cd: N.D	N/T
				Cr: N.D	
				Pb: N.D	
				Hg: N.D	
				Br: N.D	
111	111	All	XRF	Cd: N.D	N/T
				Cr: N.D	
				Pb: N.D	
				Hg: N.D	
				Br: N.D	
112	112	All	XRF	Cd: N.D	N/T
				Cr: N.D	
				Pb: N.D	
				Hg: N.D	
				Br: N.D	
113	113	All	XRF	Cd: N.D	N/T
				Cr: N.D	
				Pb: N.D	
				Hg: N.D	
				Br: N.D	
114	114	All	XRF	Cd: N.D	N/T
				Cr: N.D	
				Pb: N.D	
				Hg: N.D	
				Br: N.D	
115	115	All	XRF	Cd: N.D	N/T
				Cr: N.D	
				Pb: N.D	
				Hg: N.D	
				Br: N.D	
116	116	All	XRF	Cd: N.D	N/T
				Cr: N.D	
				Pb: N.D	
				Hg: N.D	
				Br: N.D	

## VERIFICATION REPORT

TESTED MATERIAL	SCHEME	TARGET RoHS SUBSTANCES	TEST METHOD USED	XRF RESULT (in mg/kg)	CHEMICAL TEST RESULT (in mg/kg)
117	117	All	XRF	Cd: N.D	N/T
				Cr: N.D	
				Pb: N.D	
				Hg: N.D	
				Br: N.D	
118	118	All	XRF	Cd: N.D	N/T
				Cr: N.D	
				Pb: N.D	
				Hg: N.D	
				Br: N.D	
119	119	All	XRF	Cd: N.D	N/T
				Cr: N.D	
				Pb: N.D	
				Hg: N.D	
				Br: N.D	
120	120	All	XRF	Cd: N.D	N/T
				Cr: N.D	
				Pb: N.D	
				Hg: N.D	
				Br: N.D	
121	121	All	XRF	Cd: N.D	N/T
				Cr: N.D	
				Pb: N.D	
				Hg: N.D	
				Br: N.D	
122	122	All	XRF	Cd: N.D	N/T
				Cr: N.D	
				Pb: N.D	
				Hg: N.D	
				Br: N.D	
123	123	All	XRF	Cd: N.D	N/T
				Cr: N.D	
				Pb: N.D	
				Hg: N.D	
				Br: N.D	
124	124	All	XRF	Cd: N.D	N/T
				Cr: N.D	
				Pb: N.D	
				Hg: N.D	
				Br: N.D	
125	125	All	XRF	Cd: N.D	N/T
				Cr: N.D	
				Pb: N.D	
				Hg: N.D	
				Br: N.D	

## VERIFICATION REPORT

TESTED MATERIAL	SCHEME	TARGET RoHS SUBSTANCES	TEST METHOD USED	XRF RESULT (in mg/kg)	CHEMICAL TEST RESULT (in mg/kg)
126	126	All	XRF	Cd: N.D	N/T
				Cr: N.D	
				Pb: N.D	
				Hg: N.D	
				Br: N.D	
127	127	All	XRF	Cd: N.D	N/T
				Cr: N.D	
				Pb: N.D	
				Hg: N.D	
				Br: N.D	
128	128	All	XRF	Cd: N.D	N/T
				Cr: N.D	
				Pb: N.D	
				Hg: N.D	
				Br: N.D	
129	129	All	XRF	Cd: N.D	N/T
				Cr: N.D	
				Pb: N.D	
				Hg: N.D	
				Br: N.D	
130	130	All	XRF	Cd: N.D	N/T
				Cr: N.D	
				Pb: N.D	
				Hg: N.D	
				Br: N.D	
131	131	All	XRF	Cd: N.D	N/T
				Cr: N.D	
				Pb: N.D	
				Hg: N.D	
				Br: N.D	
132	132	All	XRF	Cd: N.D	N/T
				Cr: N.D	
				Pb: N.D	
				Hg: N.D	
				Br: N.D	
133	133	All	XRF + Chemical	Cd: N.D	PBBs: N.D(<5.0) PBDEs: N.D(<5.0)
				Cr: N.D	
				Pb: N.D	
				Hg: N.D	
				Br: Inconclusive	
134	134	All	XRF	Cd: N.D	N/T
				Cr: N.D	
				Pb: N.D	
				Hg: N.D	
				Br: N.D	



## VERIFICATION REPORT

TESTED MATERIAL	SCHEME	TARGET RoHS SUBSTANCES	TEST METHOD USED	XRF RESULT (in mg/kg)	CHEMICAL TEST RESULT (in mg/kg)
135	135	All	XRF	Cd: N.D	N/T
				Cr: N.D	
				Pb: N.D	
				Hg: N.D	
				Br: N.D	
136	136	All	XRF	Cd: N.D	N/T
				Cr: N.D	
				Pb: N.D	
				Hg: N.D	
				Br: N.D	
137	137	All	XRF	Cd: N.D	N/T
				Cr: N.D	
				Pb: N.D	
				Hg: N.D	
				Br: N.D	
138	138	All	XRF + Chemical	Cd: N.D	PBBs: N.D(<5.0) PBDEs: N.D(<5.0)
				Cr: N.D	
				Pb: N.D	
				Hg: N.D	
				Br: Inconclusive	
139	139	All	XRF + Chemical	Cd: N.D	PBBs: N.D(<5.0) PBDEs: N.D(<5.0)
				Cr: N.D	
				Pb: N.D	
				Hg: N.D	
				Br: Inconclusive	
140	140	All	XRF	Cd: N.D	N/T
				Cr: N.D	
				Pb: N.D	
				Hg: N.D	
				Br: N.D	
141	141	All	XRF	Cd: N.D	N/T
				Cr: N.D	
				Pb: N.D	
				Hg: N.D	
				Br: N.D	
142	142	All	XRF + Chemical	Cd: N.D	Cr <sup>6+</sup> : N.D(<8.0) Pb: 3.5×10 <sup>2</sup>
				Cr: Inconclusive	
				Pb: Inconclusive	
				Hg: N.D	
				Br: N.D	
143	143	All	XRF	Cd: N.D	N/T
				Cr: N.D	
				Pb: N.D	
				Hg: N.D	
				Br: N.D	

## VERIFICATION REPORT

TESTED MATERIAL	SCHEME	TARGET RoHS SUBSTANCES	TEST METHOD USED	XRF RESULT (in mg/kg)	CHEMICAL TEST RESULT (in mg/kg)
144	144	All	XRF	Cd: N.D	N/T
				Cr: N.D	
				Pb: N.D	
				Hg: N.D	
				Br: N.D	
145	145	All	XRF + Chemical	Cd: N.D	PBBs: N.D(<5.0) PBDEs: N.D(<5.0)
				Cr: N.D	
				Pb: N.D	
				Hg: N.D	
				Br: Inconclusive	
146	146	All	XRF + Chemical	Cd: N.D	PBBs: N.D(<5.0) PBDEs: N.D(<5.0)
				Cr: N.D	
				Pb: N.D	
				Hg: N.D	
				Br: Inconclusive	
147	147	All	XRF	Cd: N.D	N/T
				Cr: N.D	
				Pb: N.D	
				Hg: N.D	
				Br: N.D	
148	148	All	XRF	Cd: N.D	N/T
				Cr: N.D	
				Pb: N.D	
				Hg: N.D	
				Br: N.D	
149	149	All	XRF	Cd: N.D	N/T
				Cr: N.D	
				Pb: N.D	
				Hg: N.D	
				Br: N.D	
150	150	All	XRF	Cd: N.D	N/T
				Cr: N.D	
				Pb: N.D	
				Hg: N.D	
				Br: N.D	
151	151	All	XRF	Cd: N.D	N/T
				Cr: N.D	
				Pb: N.D	
				Hg: N.D	
				Br: N.D	
152	152	All	XRF	Cd: N.D	N/T
				Cr: N.D	
				Pb: N.D	
				Hg: N.D	
				Br: N.D	

## VERIFICATION REPORT

TESTED MATERIAL	SCHEME	TARGET RoHS SUBSTANCES	TEST METHOD USED	XRF RESULT (in mg/kg)	CHEMICAL TEST RESULT (in mg/kg)
153	153	All	XRF + Chemical	Cd: N.D	PBBs: N.D(<5.0) PBDEs: N.D(<5.0)
				Cr: N.D	
				Pb: N.D	
				Hg: N.D	
				Br: Inconclusive	
154	154	All	XRF	Cd: N.D	N/T
				Cr: N.D	
				Pb: N.D	
				Hg: N.D	
				Br: N.D	
155	155	All	XRF	Cd: N.D	N/T
				Cr: N.D	
				Pb: N.D	
				Hg: N.D	
				Br: N.D	
156	156	All	XRF + Chemical	Cd: N.D	PBBs: N.D(<5.0) PBDEs: N.D(<5.0)
				Cr: N.D	
				Pb: N.D	
				Hg: N.D	
				Br: Inconclusive	
157	157	All	XRF + Chemical	Cd: N.D	Cr <sup>6+</sup> : Negative
				Cr: Inconclusive	
				Pb: N.D	
				Hg: N.D	
				Br: N.D	
158	158	All	XRF + Chemical	Cd: N.D	Cr <sup>6+</sup> : Negative
				Cr: Inconclusive	
				Pb: N.D	
				Hg: N.D	
				Br: N.D	
159	159	All	XRF	Cd: N.D	N/T
				Cr: N.D	
				Pb: N.D	
				Hg: N.D	
				Br: N.D	
160	160	All	XRF	Cd: N.D	N/T
				Cr: N.D	
				Pb: N.D	
				Hg: N.D	
				Br: N.D	
161	161	All	XRF	Cd: N.D	N/T
				Cr: N.D	
				Pb: N.D	
				Hg: N.D	
				Br: N.D	

## VERIFICATION REPORT

TESTED MATERIAL	SCHEME	TARGET RoHS SUBSTANCES	TEST METHOD USED	XRF RESULT (in mg/kg)	CHEMICAL TEST RESULT (in mg/kg)
162	162	All	XRF	Cd: N.D	N/T
				Cr: N.D	
				Pb: N.D	
				Hg: N.D	
				Br: N.D	
163	163	All	XRF	Cd: N.D	N/T
				Cr: N.D	
				Pb: N.D	
				Hg: N.D	
				Br: N.D	
164	164	All	XRF	Cd: N.D	N/T
				Cr: N.D	
				Pb: N.D	
				Hg: N.D	
				Br: N.D	
165	165	All	XRF + Chemical	Cd: N.D	PBBs: N.D(<5.0) PBDEs: N.D(<5.0)
				Cr: N.D	
				Pb: N.D	
				Hg: N.D	
				Br: Inconclusive	
166	166	All	XRF + Chemical	Cd: N.D	PBBs: N.D(<5.0) PBDEs: N.D(<5.0)
				Cr: N.D	
				Pb: N.D	
				Hg: N.D	
				Br: Inconclusive	
167	167	All	XRF + Chemical	Cd: N.D	PBBs: N.D(<5.0) PBDEs: N.D(<5.0)
				Cr: N.D	
				Pb: N.D	
				Hg: N.D	
				Br: Inconclusive	
168	168	All	XRF	Cd: N.D	N/T
				Cr: N.D	
				Pb: See remark	
				Hg: N.D	
				Br: N.D	
169	169	All	XRF + Chemical	Cd: N.D	PBBs: N.D(<5.0) PBDEs: N.D(<5.0)
				Cr: N.D	
				Pb: N.D	
				Hg: N.D	
				Br: Inconclusive	
170	170	All	XRF	Cd: N.D	N/T
				Cr: N.D	
				Pb: N.D	
				Hg: N.D	
				Br: N.D	

## VERIFICATION REPORT

TESTED MATERIAL	SCHEME	TARGET RoHS SUBSTANCES	TEST METHOD USED	XRF RESULT (in mg/kg)	CHEMICAL TEST RESULT (in mg/kg)
171	171	All	XRF + Chemical	Cd: N.D	Pb: N.D(<2.0)
				Cr: N.D	
				Pb: Inconclusive	
				Hg: N.D	
172	172	All	XRF	Br: N.D	N/T
				Cd: N.D	
				Cr: N.D	
				Pb: N.D	
173	173	All	XRF + Chemical	Hg: N.D	Cr <sup>6+</sup> : Negative
				Br: N.D	
				Cd: N.D	
				Cr: Inconclusive	
174	174	All	XRF + Chemical	Pb: N.D	Cr <sup>6+</sup> : Negative
				Hg: N.D	
				Br: N.D	
				Cr: Inconclusive	
175	175	All	XRF + Chemical	Cd: N.D	Cr <sup>6+</sup> : Negative
				Cr: Inconclusive	
				Pb: N.D	
				Hg: N.D	
176	176	All	XRF + Chemical	Br: N.D	Cr <sup>6+</sup> : Negative
				Cd: N.D	
				Cr: Inconclusive	
				Pb: N.D	
177	177	All	XRF	Hg: N.D	N/T
				Br: N.D	
				Pb: N.D	
				Cr: N.D	
178	178	All	XRF + Chemical	Hg: N.D	PBBs: N.D(<5.0) PBDEs: N.D(<5.0)
				Br: Inconclusive	
				Pb: N.D	
				Cr: N.D	
179	179	All	XRF	Br: N.D	N/T
				Cd: N.D	
				Cr: N.D	
				Pb: N.D	

## VERIFICATION REPORT

TESTED MATERIAL	SCHEME	TARGET RoHS SUBSTANCES	TEST METHOD USED	XRF RESULT (in mg/kg)	CHEMICAL TEST RESULT (in mg/kg)
180	180	All	XRF + Chemical	Cd: Inconclusive	Cd: N.D(<2.0) Pb: See remark
				Cr: N.D	
				Pb: Inconclusive	
				Hg: N.D	
181	181	All	XRF	Br: N.D	N/T
				Cd: N.D	
				Cr: N.D	
				Pb: N.D	
182	182	All	XRF + Chemical	Hg: N.D	Cr <sup>6+</sup> : Negative
				Br: N.D	
				Cd: N.D	
				Cr: Inconclusive	
183	183	All	XRF + Chemical	Pb: N.D	Cr <sup>6+</sup> : Negative
				Hg: N.D	
				Cr: Inconclusive	
				Br: N.D	
184	184	All	XRF + Chemical	Cd: N.D	Cr <sup>6+</sup> : Negative
				Cr: Inconclusive	
				Pb: N.D	
				Hg: N.D	
185	185	All	XRF + Chemical	Br: N.D	Cr <sup>6+</sup> : Negative
				Cd: N.D	
				Cr: Inconclusive	
				Pb: N.D	
186	186	All	XRF + Chemical	Hg: N.D	Cr <sup>6+</sup> : Negative
				Br: N.D	
				Cd: N.D	
				Cr: Inconclusive	
187	187	All	XRF	Pb: N.D	N/T
				Hg: N.D	
				Cr: N.D	
				Br: N.D	
188	188	All	XRF + Chemical	Hg: N.D	PBBs: N.D(<5.0) PBDEs: N.D(<5.0)
				Pb: N.D	
				Cr: N.D	
				Br: Inconclusive	

## VERIFICATION REPORT

TESTED MATERIAL	SCHEME	TARGET RoHS SUBSTANCES	TEST METHOD USED	XRF RESULT (in mg/kg)	CHEMICAL TEST RESULT (in mg/kg)
189	189	All	XRF	Cd: N.D	N/T
				Cr: N.D	
				Pb: N.D	
				Hg: N.D	
				Br: N.D	
190	190	All	XRF + Chemical	Cd: N.D	Cr <sup>6+</sup> : Negative
				Cr: Inconclusive	
				Pb: N.D	
				Hg: N.D	
				Br: N.D	
191	191	All	XRF	Cd: N.D	N/T
				Cr: N.D	
				Pb: N.D	
				Hg: N.D	
				Br: N.D	
192	192	All	XRF	Cd: N.D	N/T
				Cr: N.D	
				Pb: N.D	
				Hg: N.D	
				Br: N.D	
193	193	All	XRF	Cd: N.D	N/T
				Cr: N.D	
				Pb: N.D	
				Hg: N.D	
				Br: N.D	
194	194	All	XRF	Cd: N.D	N/T
				Cr: N.D	
				Pb: N.D	
				Hg: N.D	
				Br: N.D	
195	195	All	XRF + Chemical	Cd: N.D	Cr <sup>6+</sup> : Negative
				Cr: Inconclusive	
				Pb: N.D	
				Hg: N.D	
				Br: N.D	
196	196	All	XRF	Cd: N.D	N/T
				Cr: N.D	
				Pb: N.D	
				Hg: N.D	
				Br: N.D	
197	197	All	XRF	Cd: N.D	N/T
				Cr: N.D	
				Pb: N.D	
				Hg: N.D	
				Br: N.D	

## VERIFICATION REPORT

TESTED MATERIAL	SCHEME	TARGET RoHS SUBSTANCES	TEST METHOD USED	XRF RESULT (in mg/kg)	CHEMICAL TEST RESULT (in mg/kg)
198	198	All	XRF	Cd: N.D	N/T
				Cr: N.D	
				Pb: N.D	
				Hg: N.D	
				Br: N.D	
199	199	All	XRF	Cd: N.D	N/T
				Cr: N.D	
				Pb: N.D	
				Hg: N.D	
				Br: N.D	
200	200	All	XRF	Cd: N.D	N/T
				Cr: N.D	
				Pb: N.D	
				Hg: N.D	
				Br: N.D	
201	201	All	XRF	Cd: N.D	N/T
				Cr: N.D	
				Pb: N.D	
				Hg: N.D	
				Br: N.D	
202	202	All	XRF	Cd: N.D	N/T
				Cr: N.D	
				Pb: N.D	
				Hg: N.D	
				Br: N.D	
203	203	All	XRF	Cd: N.D	N/T
				Cr: N.D	
				Pb: N.D	
				Hg: N.D	
				Br: N.D	
204	204	All	XRF	Cd: N.D	N/T
				Cr: N.D	
				Pb: N.D	
				Hg: N.D	
				Br: N.D	
205	205	All	XRF + Chemical	Cd: N.D	Cr <sup>6+</sup> : N.D(<8.0)
				Cr: Inconclusive	
				Pb: N.D	
				Hg: N.D	
				Br: N.D	
206	206	All	XRF	Cd: N.D	N/T
				Cr: N.D	
				Pb: N.D	
				Hg: N.D	
				Br: N.D	



## VERIFICATION REPORT

TESTED MATERIAL	SCHEME	TARGET RoHS SUBSTANCES	TEST METHOD USED	XRF RESULT (in mg/kg)	CHEMICAL TEST RESULT (in mg/kg)
207	207	All	XRF + Chemical	Cd: N.D	Cr <sup>6+</sup> : N.D(<8.0)
				Cr: Inconclusive	
				Pb: N.D	
				Hg: N.D	
208	208	All	XRF	Br: N.D	N/T
				Cd: N.D	
				Cr: N.D	
				Pb: N.D	
209	209	All	XRF + Chemical	Hg: N.D	Cr <sup>6+</sup> : N.D(<8.0)
				Br: N.D	
				Cd: N.D	
				Cr: Inconclusive	
210	210	All	XRF	Pb: N.D	N/T
				Hg: N.D	
				Cr: N.D	
				Cd: N.D	
211	211	All	XRF	Br: N.D	N/T
				Hg: N.D	
				Pb: N.D	
				Cr: N.D	
212	212	All	XRF	Br: N.D	N/T
				Hg: N.D	
				Pb: N.D	
				Cr: N.D	
213	213	All	XRF	Br: N.D	N/T
				Hg: N.D	
				Pb: N.D	
				Cr: N.D	
214	214	All	XRF	Br: N.D	N/T
				Hg: N.D	
				Pb: N.D	
				Cr: N.D	
215	215	All	XRF + Chemical	Br: Inconclusive	PBBs: N.D(<5.0) PBDEs: N.D(<5.0)
				Hg: N.D	
				Pb: N.D	
				Cr: N.D	

## VERIFICATION REPORT

TESTED MATERIAL	SCHEME	TARGET RoHS SUBSTANCES	TEST METHOD USED	XRF RESULT (in mg/kg)	CHEMICAL TEST RESULT (in mg/kg)
216	216	All	XRF + Chemical	Cd: N.D	PBBs: N.D(<5.0) PBDEs: N.D(<5.0)
				Cr: N.D	
				Pb: N.D	
				Hg: N.D	
				Br: Inconclusive	
217	217	All	XRF + Chemical	Cd: N.D	PBBs: N.D(<5.0) PBDEs: N.D(<5.0)
				Cr: N.D	
				Pb: N.D	
				Hg: N.D	
				Br: Inconclusive	
218	218	All	XRF	Cd: N.D	N/T
				Cr: N.D	
				Pb: N.D	
				Hg: N.D	
				Br: N.D	
219	219	All	XRF + Chemical	Cd: N.D	Cr <sup>6+</sup> : Negative
				Cr: Inconclusive	
				Pb: N.D	
				Hg: N.D	
				Br: N.D	
220	220	All	XRF	Cd: N.D	N/T
				Cr: N.D	
				Pb: N.D	
				Hg: N.D	
				Br: N.D	
221	221	All	XRF	Cd: N.D	N/T
				Cr: N.D	
				Pb: N.D	
				Hg: N.D	
				Br: N.D	
222	222	All	XRF	Cd: N.D	N/T
				Cr: N.D	
				Pb: N.D	
				Hg: N.D	
				Br: N.D	
223	223	All	XRF	Cd: N.D	N/T
				Cr: N.D	
				Pb: N.D	
				Hg: N.D	
				Br: N.D	
224	224	All	XRF	Cd: N.D	N/T
				Cr: N.D	
				Pb: N.D	
				Hg: N.D	
				Br: N.D	

## VERIFICATION REPORT

TESTED MATERIAL	SCHEME	TARGET RoHS SUBSTANCES	TEST METHOD USED	XRF RESULT (in mg/kg)	CHEMICAL TEST RESULT (in mg/kg)
225	225	All	XRF	Cd: N.D	N/T
				Cr: N.D	
				Pb: N.D	
				Hg: N.D	
				Br: N.D	
226	226	All	XRF	Cd: N.D	N/T
				Cr: N.D	
				Pb: N.D	
				Hg: N.D	
				Br: N.D	
227	227	All	XRF	Cd: N.D	N/T
				Cr: N.D	
				Pb: N.D	
				Hg: N.D	
				Br: N.D	
228	228	All	XRF	Cd: N.D	N/T
				Cr: N.D	
				Pb: N.D	
				Hg: N.D	
				Br: N.D	
229	229	All	XRF	Cd: N.D	N/T
				Cr: N.D	
				Pb: N.D	
				Hg: N.D	
				Br: N.D	
230	230	All	XRF	Cd: N.D	N/T
				Cr: N.D	
				Pb: N.D	
				Hg: N.D	
				Br: N.D	
231	231	All	XRF	Cd: N.D	N/T
				Cr: N.D	
				Pb: N.D	
				Hg: N.D	
				Br: N.D	
232	232	All	XRF	Cd: N.D	N/T
				Cr: N.D	
				Pb: N.D	
				Hg: N.D	
				Br: N.D	
233	233	All	XRF + Chemical	Cd: N.D	Cr <sup>6+</sup> : Negative
				Cr: Inconclusive	
				Pb: N.D	
				Hg: N.D	
				Br: N.D	

## VERIFICATION REPORT

TESTED MATERIAL	SCHEME	TARGET RoHS SUBSTANCES	TEST METHOD USED	XRF RESULT (in mg/kg)	CHEMICAL TEST RESULT (in mg/kg)
234	234	All	XRF	Cd: N.D	N/T
				Cr: N.D	
				Pb: N.D	
				Hg: N.D	
				Br: N.D	
235	235	All	XRF	Cd: N.D	N/T
				Cr: N.D	
				Pb: N.D	
				Hg: N.D	
				Br: N.D	
236	236	All	XRF	Cd: N.D	N/T
				Cr: N.D	
				Pb: N.D	
				Hg: N.D	
				Br: N.D	
237	237	All	XRF	Cd: N.D	N/T
				Cr: N.D	
				Pb: N.D	
				Hg: N.D	
				Br: N.D	
238	238	All	XRF	Cd: N.D	N/T
				Cr: N.D	
				Pb: N.D	
				Hg: N.D	
				Br: N.D	
239	239	All	XRF	Cd: N.D	N/T
				Cr: N.D	
				Pb: N.D	
				Hg: N.D	
				Br: N.D	
240	240	All	XRF	Cd: N.D	N/T
				Cr: N.D	
				Pb: N.D	
				Hg: N.D	
				Br: N.D	
241	241	All	XRF	Cd: N.D	N/T
				Cr: N.D	
				Pb: N.D	
				Hg: N.D	
				Br: N.D	
242	242	All	XRF	Cd: N.D	N/T
				Cr: N.D	
				Pb: N.D	
				Hg: N.D	
				Br: N.D	

## VERIFICATION REPORT

TESTED MATERIAL	SCHEME	TARGET RoHS SUBSTANCES	TEST METHOD USED	XRF RESULT (in mg/kg)	CHEMICAL TEST RESULT (in mg/kg)
243	243	All	XRF	Cd: N.D	N/T
				Cr: N.D	
				Pb: N.D	
				Hg: N.D	
				Br: N.D	
244	244	All	XRF	Cd: N.D	N/T
				Cr: N.D	
				Pb: N.D	
				Hg: N.D	
				Br: N.D	
245	245	All	XRF	Cd: N.D	N/T
				Cr: N.D	
				Pb: N.D	
				Hg: N.D	
				Br: N.D	
246	246	All	XRF	Cd: N.D	N/T
				Cr: N.D	
				Pb: N.D	
				Hg: N.D	
				Br: N.D	
247	247	All	XRF	Cd: N.D	N/T
				Cr: N.D	
				Pb: N.D	
				Hg: N.D	
				Br: N.D	
248	248	All	XRF	Cd: N.D	N/T
				Cr: N.D	
				Pb: N.D	
				Hg: N.D	
				Br: N.D	
249	249	All	XRF	Cd: N.D	N/T
				Cr: N.D	
				Pb: N.D	
				Hg: N.D	
				Br: N.D	
250	250	All	XRF	Cd: N.D	N/T
				Cr: N.D	
				Pb: N.D	
				Hg: N.D	
				Br: N.D	
251	251	All	XRF	Cd: N.D	N/T
				Cr: N.D	
				Pb: N.D	
				Hg: N.D	
				Br: N.D	

## VERIFICATION REPORT

TESTED MATERIAL	SCHEME	TARGET RoHS SUBSTANCES	TEST METHOD USED	XRF RESULT (in mg/kg)	CHEMICAL TEST RESULT (in mg/kg)
252	252	All	XRF	Cd: N.D	N/T
				Cr: N.D	
				Pb: N.D	
				Hg: N.D	
				Br: N.D	
253	253	All	XRF	Cd: N.D	N/T
				Cr: N.D	
				Pb: N.D	
				Hg: N.D	
				Br: N.D	
254	254	All	XRF + Chemical	Cd: N.D	PBBs: N.D(<5.0) PBDEs: N.D(<5.0)
				Cr: N.D	
				Pb: N.D	
				Hg: N.D	
				Br: Inconclusive	
255	255	All	XRF	Cd: N.D	N/T
				Cr: N.D	
				Pb: N.D	
				Hg: N.D	
				Br: N.D	
256	256	All	XRF	Cd: N.D	N/T
				Cr: N.D	
				Pb: N.D	
				Hg: N.D	
				Br: N.D	
257	257	All	XRF	Cd: N.D	N/T
				Cr: N.D	
				Pb: N.D	
				Hg: N.D	
				Br: N.D	
258	258	All	XRF	Cd: N.D	N/T
				Cr: N.D	
				Pb: N.D	
				Hg: N.D	
				Br: N.D	
259	259	All	XRF + Chemical	Cd: N.D	PBBs: N.D(<5.0) PBDEs: N.D(<5.0)
				Cr: N.D	
				Pb: N.D	
				Hg: N.D	
				Br: Inconclusive	
260	260	All	XRF	Cd: N.D	N/T
				Cr: N.D	
				Pb: N.D	
				Hg: N.D	
				Br: N.D	

## VERIFICATION REPORT

TESTED MATERIAL	SCHEME	TARGET RoHS SUBSTANCES	TEST METHOD USED	XRF RESULT (in mg/kg)	CHEMICAL TEST RESULT (in mg/kg)
261	261	All	XRF + Chemical	Cd: N.D	PBBs: N.D(<5.0) PBDEs: N.D(<5.0)
				Cr: N.D	
				Pb: N.D	
				Hg: N.D	
				Br: Inconclusive	
262	262	All	XRF + Chemical	Cd: N.D	Cr <sup>6+</sup> : Negative
				Cr: Inconclusive	
				Pb: N.D	
				Hg: N.D	
				Br: N.D	
263	263	All	XRF + Chemical	Cd: N.D	Cr <sup>6+</sup> : Negative
				Cr: Inconclusive	
				Pb: N.D	
				Hg: N.D	
				Br: N.D	
264	264	All	XRF	Cd: N.D	N/T
				Cr: N.D	
				Pb: N.D	
				Hg: N.D	
				Br: N.D	
265	265	All	XRF	Cd: N.D	N/T
				Cr: N.D	
				Pb: N.D	
				Hg: N.D	
				Br: N.D	
266	266	All	XRF	Cd: N.D	N/T
				Cr: N.D	
				Pb: N.D	
				Hg: N.D	
				Br: N.D	
267	267	All	XRF	Cd: N.D	N/T
				Cr: N.D	
				Pb: N.D	
				Hg: N.D	
				Br: N.D	
268	268	All	XRF	Cd: N.D	N/T
				Cr: N.D	
				Pb: N.D	
				Hg: N.D	
				Br: N.D	
269	269	All	XRF	Cd: N.D	N/T
				Cr: N.D	
				Pb: N.D	
				Hg: N.D	
				Br: N.D	

## VERIFICATION REPORT

TESTED MATERIAL	SCHEME	TARGET RoHS SUBSTANCES	TEST METHOD USED	XRF RESULT (in mg/kg)	CHEMICAL TEST RESULT (in mg/kg)
270	270	All	XRF	Cd: N.D	N/T
				Cr: N.D	
				Pb: N.D	
				Hg: N.D	
				Br: N.D	
271	271	All	XRF	Cd: N.D	N/T
				Cr: N.D	
				Pb: N.D	
				Hg: N.D	
				Br: N.D	
272	272	All	XRF	Cd: N.D	N/T
				Cr: N.D	
				Pb: N.D	
				Hg: N.D	
				Br: N.D	
273	273	All	XRF	Cd: N.D	N/T
				Cr: N.D	
				Pb: N.D	
				Hg: N.D	
				Br: N.D	
274	274	All	XRF	Cd: N.D	N/T
				Cr: N.D	
				Pb: N.D	
				Hg: N.D	
				Br: N.D	
275	275	All	XRF	Cd: N.D	N/T
				Cr: N.D	
				Pb: N.D	
				Hg: N.D	
				Br: N.D	
276	276	All	XRF	Cd: N.D	N/T
				Cr: N.D	
				Pb: See remark	
				Hg: N.D	
				Br: N.D	
277	277	All	XRF	Cd: N.D	N/T
				Cr: N.D	
				Pb: N.D	
				Hg: N.D	
				Br: N.D	
278	278	All	XRF	Cd: N.D	N/T
				Cr: N.D	
				Pb: N.D	
				Hg: N.D	
				Br: N.D	



## VERIFICATION REPORT

TESTED MATERIAL	SCHEME	TARGET RoHS SUBSTANCES	TEST METHOD USED	XRF RESULT (in mg/kg)	CHEMICAL TEST RESULT (in mg/kg)
279	279	All	XRF	Cd: N.D	N/T
				Cr: N.D	
				Pb: N.D	
				Hg: N.D	
				Br: N.D	
280	280	All	XRF + Chemical	Cd: N.D	PBBs: N.D(<5.0) PBDEs: N.D(<5.0)
				Cr: N.D	
				Pb: N.D	
				Hg: N.D	
				Br: Inconclusive	
281	281	All	XRF	Cd: N.D	N/T
				Cr: N.D	
				Pb: N.D	
				Hg: N.D	
				Br: N.D	
282	282	All	XRF + Chemical	Cd: N.D	Cr <sup>6+</sup> : Negative
				Cr: Inconclusive	
				Pb: N.D	
				Hg: N.D	
				Br: N.D	
283	283	All	XRF	Cd: N.D	N/T
				Cr: N.D	
				Pb: N.D	
				Hg: N.D	
				Br: N.D	
284	284	All	XRF + Chemical	Cd: N.D	Cr <sup>6+</sup> : Negative
				Cr: Inconclusive	
				Pb: N.D	
				Hg: N.D	
				Br: N.D	
285	285	All	XRF + Chemical	Cd: N.D	Cr <sup>6+</sup> : Negative
				Cr: Inconclusive	
				Pb: N.D	
				Hg: N.D	
				Br: N.D	
286	286	All	XRF	Cd: N.D	N/T
				Cr: N.D	
				Pb: N.D	
				Hg: N.D	
				Br: N.D	
287	287	All	XRF + Chemical	Cd: N.D	PBBs: N.D(<5.0) PBDEs: N.D(<5.0)
				Cr: N.D	
				Pb: N.D	
				Hg: N.D	
				Br: Inconclusive	

## VERIFICATION REPORT

TESTED MATERIAL	SCHEME	TARGET RoHS SUBSTANCES	TEST METHOD USED	XRF RESULT (in mg/kg)	CHEMICAL TEST RESULT (in mg/kg)
288	288	All	XRF	Cd: N.D	N/T
				Cr: N.D	
				Pb: N.D	
				Hg: N.D	
				Br: N.D	
289	289	All	XRF + Chemical	Cd: N.D	Cr <sup>6+</sup> : Negative
				Cr: Inconclusive	
				Pb: N.D	
				Hg: N.D	
				Br: N.D	
290	290	All	XRF	Cd: N.D	N/T
				Cr: N.D	
				Pb: N.D	
				Hg: N.D	
				Br: N.D	
291	291	All	XRF	Cd: N.D	N/T
				Cr: N.D	
				Pb: N.D	
				Hg: N.D	
				Br: N.D	
292	292	All	XRF + Chemical	Cd: N.D	Cr <sup>6+</sup> : Negative
				Cr: Inconclusive	
				Pb: N.D	
				Hg: N.D	
				Br: N.D	
293	293	All	XRF + Chemical	Cd: N.D	Cr <sup>6+</sup> : Negative
				Cr: Inconclusive	
				Pb: N.D	
				Hg: N.D	
				Br: N.D	
294	294	All	XRF + Chemical	Cd: N.D	Cr <sup>6+</sup> : Negative
				Cr: Inconclusive	
				Pb: N.D	
				Hg: N.D	
				Br: N.D	
295	295	All	XRF + Chemical	Cd: N.D	Cr <sup>6+</sup> : Negative
				Cr: Inconclusive	
				Pb: N.D	
				Hg: N.D	
				Br: N.D	
296	296	All	XRF	Cd: N.D	N/T
				Cr: N.D	
				Pb: N.D	
				Hg: N.D	
				Br: N.D	

## VERIFICATION REPORT

TESTED MATERIAL	SCHEME	TARGET RoHS SUBSTANCES	TEST METHOD USED	XRF RESULT (in mg/kg)	CHEMICAL TEST RESULT (in mg/kg)
297	297	All	XRF	Cd: N.D	N/T
				Cr: N.D	
				Pb: N.D	
				Hg: N.D	
				Br: N.D	
298	298	All	XRF	Cd: N.D	N/T
				Cr: N.D	
				Pb: N.D	
				Hg: N.D	
				Br: N.D	
299	299	All	XRF	Cd: N.D	N/T
				Cr: N.D	
				Pb: N.D	
				Hg: N.D	
				Br: N.D	
300	300	All	XRF	Cd: N.D	N/T
				Cr: N.D	
				Pb: N.D	
				Hg: N.D	
				Br: N.D	
301	301	All	XRF + Chemical	Cd: N.D	Cr <sup>6+</sup> : N.D(<8.0)
				Cr: Inconclusive	
				Pb: N.D	
				Hg: N.D	
				Br: N.D	
302	302	All	XRF	Cd: N.D	N/T
				Cr: N.D	
				Pb: N.D	
				Hg: N.D	
				Br: N.D	
303	303	All	XRF	Cd: N.D	N/T
				Cr: N.D	
				Pb: N.D	
				Hg: N.D	
				Br: N.D	
304	304	All	XRF	Cd: N.D	N/T
				Cr: N.D	
				Pb: N.D	
				Hg: N.D	
				Br: N.D	
305	305	All	XRF	Cd: N.D	N/T
				Cr: N.D	
				Pb: N.D	
				Hg: N.D	
				Br: N.D	

## VERIFICATION REPORT

TESTED MATERIAL	SCHEME	TARGET RoHS SUBSTANCES	TEST METHOD USED	XRF RESULT (in mg/kg)	CHEMICAL TEST RESULT (in mg/kg)
306	306	All	XRF	Cd: N.D	N/T
				Cr: N.D	
				Pb: N.D	
				Hg: N.D	
				Br: N.D	
307	307	All	XRF	Cd: N.D	N/T
				Cr: N.D	
				Pb: N.D	
				Hg: N.D	
				Br: N.D	
308	308	All	XRF	Cd: N.D	N/T
				Cr: N.D	
				Pb: N.D	
				Hg: N.D	
				Br: N.D	
309	309	All	XRF	Cd: N.D	N/T
				Cr: N.D	
				Pb: N.D	
				Hg: N.D	
				Br: N.D	
310	310	All	XRF	Cd: N.D	N/T
				Cr: N.D	
				Pb: N.D	
				Hg: N.D	
				Br: N.D	
311	311	All	XRF	Cd: N.D	N/T
				Cr: N.D	
				Pb: N.D	
				Hg: N.D	
				Br: N.D	
312	312	All	XRF	Cd: N.D	N/T
				Cr: N.D	
				Pb: N.D	
				Hg: N.D	
				Br: N.D	
313	313	All	XRF	Cd: N.D	N/T
				Cr: N.D	
				Pb: N.D	
				Hg: N.D	
				Br: N.D	
314	314	All	XRF	Cd: N.D	N/T
				Cr: N.D	
				Pb: N.D	
				Hg: N.D	
				Br: N.D	

## VERIFICATION REPORT

TESTED MATERIAL	SCHEME	TARGET RoHS SUBSTANCES	TEST METHOD USED	XRF RESULT (in mg/kg)	CHEMICAL TEST RESULT (in mg/kg)
315	315	All	XRF	Cd: N.D	N/T
				Cr: N.D	
				Pb: N.D	
				Hg: N.D	
				Br: N.D	
316	316	All	XRF	Cd: N.D	N/T
				Cr: N.D	
				Pb: N.D	
				Hg: N.D	
				Br: N.D	
317	317	All	XRF	Cd: N.D	N/T
				Cr: N.D	
				Pb: N.D	
				Hg: N.D	
				Br: N.D	
318	318	All	XRF	Cd: N.D	N/T
				Cr: N.D	
				Pb: N.D	
				Hg: N.D	
				Br: N.D	
319	319	All	XRF + Chemical	Cd: N.D	PBBs: N.D(<5.0) PBDEs: N.D(<5.0)
				Cr: N.D	
				Pb: N.D	
				Hg: N.D	
				Br: Inconclusive	
320	320	All	XRF	Cd: N.D	N/T
				Cr: N.D	
				Pb: N.D	
				Hg: N.D	
				Br: N.D	
321	321	All	XRF	Cd: N.D	N/T
				Cr: N.D	
				Pb: N.D	
				Hg: N.D	
				Br: N.D	
322	322	All	XRF	Cd: N.D	N/T
				Cr: N.D	
				Pb: N.D	
				Hg: N.D	
				Br: N.D	
323	323	All	XRF	Cd: N.D	N/T
				Cr: N.D	
				Pb: N.D	
				Hg: N.D	
				Br: N.D	

## VERIFICATION REPORT

TESTED MATERIAL	SCHEME	TARGET RoHS SUBSTANCES	TEST METHOD USED	XRF RESULT (in mg/kg)	CHEMICAL TEST RESULT (in mg/kg)
324	324	All	XRF + Chemical	Cd: N.D	Cr <sup>6+</sup> : N.D(<8.0) Pb: 96.0
				Cr: Inconclusive	
				Pb: Inconclusive	
				Hg: N.D	
				Br: N.D	
325	325	All	XRF	Cd: N.D	N/T
				Cr: N.D	
				Pb: N.D	
				Hg: N.D	
				Br: N.D	
326	326	All	XRF	Cd: N.D	N/T
				Cr: N.D	
				Pb: N.D	
				Hg: N.D	
				Br: N.D	
327	327	All	XRF	Cd: N.D	N/T
				Cr: N.D	
				Pb: N.D	
				Hg: N.D	
				Br: N.D	
328	328	All	XRF	Cd: N.D	N/T
				Cr: N.D	
				Pb: N.D	
				Hg: N.D	
				Br: N.D	
329	329	All	XRF	Cd: N.D	N/T
				Cr: N.D	
				Pb: N.D	
				Hg: N.D	
				Br: N.D	
330	330	All	XRF	Cd: N.D	N/T
				Cr: N.D	
				Pb: N.D	
				Hg: N.D	
				Br: N.D	
331	331	All	XRF	Cd: N.D	N/T
				Cr: N.D	
				Pb: N.D	
				Hg: N.D	
				Br: N.D	
332	332	All	XRF	Cd: N.D	N/T
				Cr: N.D	
				Pb: N.D	
				Hg: N.D	
				Br: N.D	

### VERIFICATION REPORT

TESTED MATERIAL	SCHEME	TARGET RoHS SUBSTANCES	TEST METHOD USED	XRF RESULT (in mg/kg)	CHEMICAL TEST RESULT (in mg/kg)
333	333	All	XRF	Cd: N.D	N/T
				Cr: N.D	
				Pb: N.D	
				Hg: N.D	
				Br: N.D	
334	334	All	XRF + Chemical	Cd: N.D	PBBs: N.D(<5.0) PBDEs: N.D(<5.0)
				Cr: N.D	
				Pb: N.D	
				Hg: N.D	
				Br: Inconclusive	
335	335	All	XRF	Cd: N.D	N/T
				Cr: N.D	
				Pb: N.D	
				Hg: N.D	
				Br: N.D	
336	336	All	XRF	Cd: N.D	N/T
				Cr: N.D	
				Pb: N.D	
				Hg: N.D	
				Br: N.D	
337	337	All	XRF	Cd: N.D	N/T
				Cr: N.D	
				Pb: N.D	
				Hg: N.D	
				Br: N.D	
338	338	All	XRF	Cd: N.D	N/T
				Cr: N.D	
				Pb: N.D	
				Hg: N.D	
				Br: N.D	
339	339	All	XRF	Cd: N.D	N/T
				Cr: N.D	
				Pb: N.D	
				Hg: N.D	
				Br: N.D	
340	340	All	XRF	Cd: N.D	N/T
				Cr: N.D	
				Pb: N.D	
				Hg: N.D	
				Br: N.D	
341	341	All	XRF	Cd: N.D	N/T
				Cr: N.D	
				Pb: N.D	
				Hg: N.D	
				Br: N.D	

## VERIFICATION REPORT

TESTED MATERIAL	SCHEME	TARGET RoHS SUBSTANCES	TEST METHOD USED	XRF RESULT (in mg/kg)	CHEMICAL TEST RESULT (in mg/kg)
342	342	All	XRF	Cd: N.D	N/T
				Cr: N.D	
				Pb: N.D	
				Hg: N.D	
				Br: N.D	

Remark: in the following pages in this report:

- RL = Reporting Limits
- N.D = Not Detected (<RL)
- MDL = Method Detection Limit
- Mg/kg = parts per million = ppm
- N/T = Not tested
- Negative = Absence of Cr<sup>6+</sup> coating

- As claimed by the information submitted by the supplier of applicant.

- The lead content of components (168 and 276) are coming from a glass or ceramic other than dielectric ceramic in capacitors, e.g. piezoelectronic devices, or in a glass or ceramic matrix compound in electrical and electronic components. According to EU RoHS recast directive (2011/65/EU), electrical and electronic components containing lead in a glass or ceramic other than dielectric ceramic in capacitors, e.g. piezoelectronic devices, or in a glass or ceramic matrix compound can be exempted.

- The cadmium content of component (53) is coming from electrical contacts. According to EU RoHS recast directive (2011/65/EU), electrical and electronic components containing cadmium and its compounds in electrical contacts can be exempted.

- Component (180) was detected to contain 3.8% lead from the Copper alloy only. According to EU RoHS recast directive (2011/65/EU), lead as an alloying element in copper alloy can be containing up to 4% lead by weight.



## VERIFICATION REPORT

(2) To determine Bis(2-ethylhexyl) phthalate (DEHP), Butyl benzyl phthalate(BBP), Dibutyl phthalate(DBP), Diisobutyl phthalate(DIBP):

Tested Item(s)	Content (mg/kg)					RL
	1	3	4	5	6	
Bis(2-ethylhexyl) phthalate (DEHP)	N.D	N.D	N.D	N.D	N.D	150.0
Butyl benzyl phthalate(BBP)	N.D	N.D	N.D	N.D	N.D	150.0
Dibutyl phthalate(DBP)	N.D	N.D	N.D	N.D	N.D	150.0
Diisobutyl phthalate(DIBP)	N.D	N.D	N.D	N.D	N.D	150.0

Tested Item(s)	Content (mg/kg)					RL
	19	20	26	28	30	
Bis(2-ethylhexyl) phthalate (DEHP)	N.D	N.D	N.D	N.D	N.D	150.0
Butyl benzyl phthalate(BBP)	N.D	N.D	N.D	N.D	N.D	150.0
Dibutyl phthalate(DBP)	N.D	N.D	N.D	N.D	N.D	150.0
Diisobutyl phthalate(DIBP)	N.D	N.D	N.D	N.D	N.D	150.0

Tested Item(s)	Content (mg/kg)					RL
	31	35	41	44	45	
Bis(2-ethylhexyl) phthalate (DEHP)	N.D	N.D	N.D	N.D	N.D	150.0
Butyl benzyl phthalate(BBP)	N.D	N.D	N.D	N.D	N.D	150.0
Dibutyl phthalate(DBP)	N.D	N.D	N.D	N.D	N.D	150.0
Diisobutyl phthalate(DIBP)	N.D	N.D	N.D	N.D	N.D	150.0

Tested Item(s)	Content (mg/kg)					RL
	46	47	48	56	63	
Bis(2-ethylhexyl) phthalate (DEHP)	N.D	N.D	N.D	N.D	N.D	150.0
Butyl benzyl phthalate(BBP)	N.D	N.D	N.D	N.D	N.D	150.0
Dibutyl phthalate(DBP)	N.D	N.D	N.D	N.D	N.D	150.0
Diisobutyl phthalate(DIBP)	N.D	N.D	N.D	N.D	N.D	150.0

## VERIFICATION REPORT

Tested Item(s)	Content (mg/kg)					RL
	68	75	76	77	81	
Bis(2-ethylhexyl) phthalate (DEHP)	N.D	N.D	N.D	N.D	N.D	150.0
Butyl benzyl phthalate(BBP)	N.D	N.D	N.D	N.D	N.D	150.0
Dibutyl phthalate(DBP)	N.D	N.D	N.D	N.D	N.D	150.0
Diisobutyl phthalate(DIBP)	N.D	N.D	N.D	N.D	N.D	150.0

Tested Item(s)	Content (mg/kg)					RL
	82	89	91	92	93	
Bis(2-ethylhexyl) phthalate (DEHP)	N.D	N.D	N.D	N.D	N.D	150.0
Butyl benzyl phthalate(BBP)	N.D	N.D	N.D	N.D	N.D	150.0
Dibutyl phthalate(DBP)	N.D	N.D	N.D	N.D	N.D	150.0
Diisobutyl phthalate(DIBP)	N.D	N.D	N.D	N.D	N.D	150.0

Tested Item(s)	Content (mg/kg)					RL
	94	97	99	109	116	
Bis(2-ethylhexyl) phthalate (DEHP)	N.D	N.D	N.D	N.D	N.D	150.0
Butyl benzyl phthalate(BBP)	N.D	N.D	N.D	N.D	N.D	150.0
Dibutyl phthalate(DBP)	N.D	N.D	N.D	N.D	N.D	150.0
Diisobutyl phthalate(DIBP)	N.D	N.D	N.D	N.D	N.D	150.0

Tested Item(s)	Content (mg/kg)					RL
	123	126	128	130	131	
Bis(2-ethylhexyl) phthalate (DEHP)	N.D	N.D	N.D	N.D	N.D	150.0
Butyl benzyl phthalate(BBP)	N.D	N.D	N.D	N.D	N.D	150.0
Dibutyl phthalate(DBP)	N.D	N.D	N.D	N.D	N.D	150.0
Diisobutyl phthalate(DIBP)	N.D	N.D	N.D	N.D	N.D	150.0

Tested Item(s)	Content (mg/kg)					RL
	147	155	156	159	160	
Bis(2-ethylhexyl) phthalate (DEHP)	N.D	N.D	N.D	N.D	N.D	150.0
Butyl benzyl phthalate(BBP)	N.D	N.D	N.D	N.D	N.D	150.0
Dibutyl phthalate(DBP)	N.D	N.D	N.D	N.D	N.D	150.0
Diisobutyl phthalate(DIBP)	N.D	N.D	N.D	N.D	N.D	150.0

## VERIFICATION REPORT

Tested Item(s)	Content (mg/kg)					RL
	165	167	177	178	188	
Bis(2-ethylhexyl) phthalate (DEHP)	N.D	N.D	N.D	N.D	N.D	150.0
Butyl benzyl phthalate(BBP)	N.D	N.D	N.D	N.D	N.D	150.0
Dibutyl phthalate(DBP)	N.D	N.D	N.D	N.D	N.D	150.0
Diisobutyl phthalate(DIBP)	N.D	N.D	N.D	N.D	N.D	150.0

Tested Item(s)	Content (mg/kg)					RL
	189	192	193	194	197	
Bis(2-ethylhexyl) phthalate (DEHP)	N.D	N.D	N.D	N.D	N.D	150.0
Butyl benzyl phthalate(BBP)	N.D	N.D	N.D	N.D	N.D	150.0
Dibutyl phthalate(DBP)	N.D	N.D	N.D	N.D	N.D	150.0
Diisobutyl phthalate(DIBP)	N.D	N.D	N.D	N.D	N.D	150.0

Tested Item(s)	Content (mg/kg)					RL
	198	199	201	210	212	
Bis(2-ethylhexyl) phthalate (DEHP)	N.D	N.D	N.D	N.D	N.D	150.0
Butyl benzyl phthalate(BBP)	N.D	N.D	N.D	N.D	N.D	150.0
Dibutyl phthalate(DBP)	N.D	N.D	N.D	N.D	N.D	150.0
Diisobutyl phthalate(DIBP)	N.D	N.D	N.D	N.D	N.D	150.0

Tested Item(s)	Content (mg/kg)					RL
	213	215	222	223	230	
Bis(2-ethylhexyl) phthalate (DEHP)	N.D	N.D	N.D	N.D	N.D	150.0
Butyl benzyl phthalate(BBP)	N.D	N.D	N.D	N.D	N.D	150.0
Dibutyl phthalate(DBP)	N.D	N.D	N.D	N.D	N.D	150.0
Diisobutyl phthalate(DIBP)	N.D	N.D	N.D	N.D	N.D	150.0

Tested Item(s)	Content (mg/kg)					RL
	243	259	260	261	265	
Bis(2-ethylhexyl) phthalate (DEHP)	N.D	N.D	N.D	N.D	N.D	150.0
Butyl benzyl phthalate(BBP)	N.D	N.D	N.D	N.D	N.D	150.0
Dibutyl phthalate(DBP)	N.D	N.D	N.D	N.D	N.D	150.0
Diisobutyl phthalate(DIBP)	N.D	N.D	N.D	N.D	N.D	150.0

## VERIFICATION REPORT

Tested Item(s)	Content (mg/kg)					RL
	266	267	268	271	272	
Bis(2-ethylhexyl) phthalate (DEHP)	N.D	N.D	N.D	N.D	N.D	150.0
Butyl benzyl phthalate(BBP)	N.D	N.D	N.D	N.D	N.D	150.0
Dibutyl phthalate(DBP)	N.D	N.D	N.D	N.D	N.D	150.0
Diisobutyl phthalate(DIBP)	N.D	N.D	N.D	N.D	N.D	150.0

Tested Item(s)	Content (mg/kg)					RL
	273	274	287	309	316	
Bis(2-ethylhexyl) phthalate (DEHP)	N.D	N.D	N.D	N.D	N.D	150.0
Butyl benzyl phthalate(BBP)	N.D	N.D	N.D	N.D	N.D	150.0
Dibutyl phthalate(DBP)	N.D	N.D	N.D	N.D	N.D	150.0
Diisobutyl phthalate(DIBP)	N.D	N.D	N.D	N.D	N.D	150.0

Tested Item(s)	Content (mg/kg)					RL
	325	326	327	328	330	
Bis(2-ethylhexyl) phthalate (DEHP)	N.D	N.D	N.D	N.D	N.D	150.0
Butyl benzyl phthalate(BBP)	N.D	N.D	N.D	N.D	N.D	150.0
Dibutyl phthalate(DBP)	N.D	N.D	N.D	N.D	N.D	150.0
Diisobutyl phthalate(DIBP)	N.D	N.D	N.D	N.D	N.D	150.0

Tested Item(s)	Content (mg/kg)				RL
	331	333	341	342	
Bis(2-ethylhexyl) phthalate (DEHP)	N.D	N.D	N.D	N.D	150.0
Butyl benzyl phthalate(BBP)	N.D	N.D	N.D	N.D	150.0
Dibutyl phthalate(DBP)	N.D	N.D	N.D	N.D	150.0
Diisobutyl phthalate(DIBP)	N.D	N.D	N.D	N.D	150.0

Remark: in the following pages in this report:

- RL = Reporting Limits
- MDL = Method Detection Limit
- N.D = Not Detected (<RL)
- Mg/kg = parts per million = ppm
- N/T = Not tested

## VERIFICATION REPORT

### TEST METHODS:

- (1) Sample prepared with reference to IEC 62321-2:2013 Determination of certain substances in electrotechnical products – Part 2: Disassembly, disjunction and mechanical sample preparation;
- (2) Sample Screening testing with reference to IEC 62321-3-1:2013 Determination of certain substances in electrotechnical products – Part 3-1: Screening – Lead, mercury, Cadmium, total chromium and total bromine using X-ray fluorescence spectrometry;
  - (a) It is the result on total Br while test item on restricted substances is PBBs/PBDEs. It is the result on total Cr while test item on restricted substances is Cr<sup>6+</sup>.
  - (b) Results are obtained by XRF for primary screening, and further chemical testing by ICP-OES(for Cd, Pb, Hg), UV-Vis(for Cr<sup>6+</sup>) and GC/MS(for PBBs, PBDEs) is recommended to be performed.  
XRF screening limits in mg/kg for regulated elements according to IEC 62321-3-1:2013

ELEMENT	POLYMER	METALS	COMPOSITE MATERIAL
Cd	BL≤(70-3σ) <X<(130+3σ) ≤OL	BL≤(70-3σ) <X<(130+3σ) ≤OL	LOD < X < (150+3σ) ≤ OL
Pb	BL≤(700-3σ) <X<(1300+3σ) ≤OL	BL≤(700-3σ) <X<(1300+3σ) ≤OL	BL≤(500-3σ) <X<(1500+3σ) ≤OL
Hg	BL≤(700-3σ) <X<(1300+3σ) ≤OL	BL≤(700-3σ) <X<(1300+3σ) ≤OL	BL≤(500-3σ) <X<(1500+3σ) ≤OL
Cr	BL≤(700-3σ) <X	BL≤(700-3σ) <X	BL≤(500-3σ) <X
Br	BL≤(300-3σ) <X	--	BL≤(250-3σ) <X

Note: BL = Below Limit, OL = Over Limit, LOD = Limit of Detection, -- = Not Regulated

The XRF screening test for RoHS elements – The reading may be different to the actual content in the sample be of non-uniformity composition.

### (3) Wet Chemical Test Method

TESTING ITEM	CHEMICAL TESTING METHOD	MDL	LIMIT
Cd	With reference to IEC 62321-5:2013, by acid digestion and determined by ICP-OES	2.0mg/kg	100mg/kg
Pb	With reference to IEC 62321-5:2013, by acid digestion and determined by ICP-OES	2.0mg/kg	1000mg/kg
Hg	With reference to IEC 62321-4:2013+A1:2017, by acid digestion and determined by ICP-OES	2.0mg/kg	1000mg/kg
Cr <sup>6+</sup> (for non metal)	With reference to IEC 62321-7-2:2017, by alkaline digestion and determined by UV-VIS spectrophotometer	8.0mg/kg	1000mg/kg
Cr <sup>6+</sup> (for metal)	With reference to IEC 62321-7-1:2015 by spot – test	0.1μg/cm <sup>2</sup>	1000mg/kg
PBBs Content	With reference to IEC 62321-6:2015, by solvent extraction and determined by GC-MS	5.0mg/kg	1000mg/kg
PBDEs Content	With reference to IEC 62321-6:2015, by solvent extraction and determined by GC-MS	5.0mg/kg	1000mg/kg

Note: According to IEC 62321-7-1:2015, result on Cr<sup>6+</sup> for metal sample is shown as Positive/Negative.

**VERIFICATION REPORT**

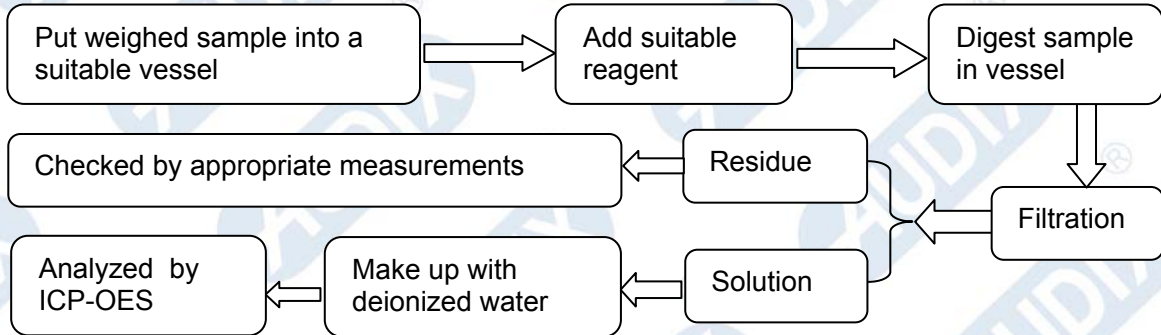
(4) DEHP、BBP、DBP、DIBP Test Method

<u>TESTING ITEM</u>	<u>CHEMICAL TESTING METHOD</u>	<u>MDL</u>	<u>LIMIT</u>
DEHP	With reference to IEC 62321-8:2017, by solvent extraction and determined by GC-MS	50.0mg/kg	1000mg/kg
BBP	With reference to IEC 62321-8:2017, by solvent extraction and determined by GC-MS	50.0mg/kg	1000mg/kg
DBP	With reference to IEC 62321-8:2017, by solvent extraction and determined by GC-MS	50.0mg/kg	1000mg/kg
DIBP	With reference to IEC 62321-8:2017, by solvent extraction and determined by GC-MS	50.0mg/kg	1000mg/kg

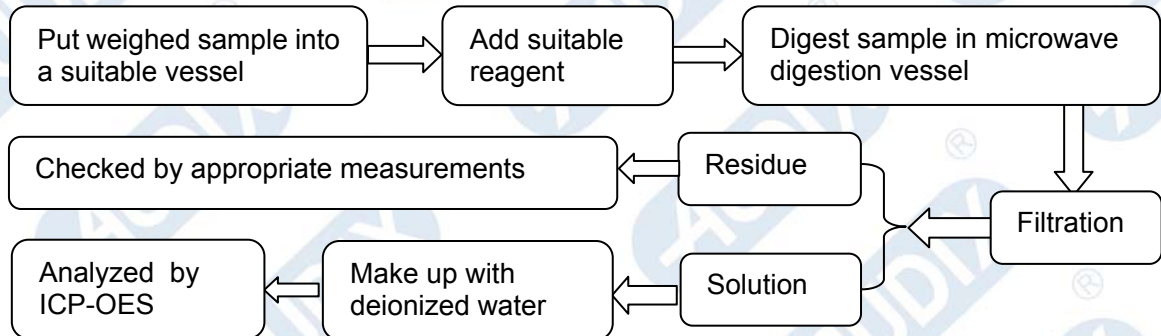
## VERIFICATION REPORT

### TEST PROCESS

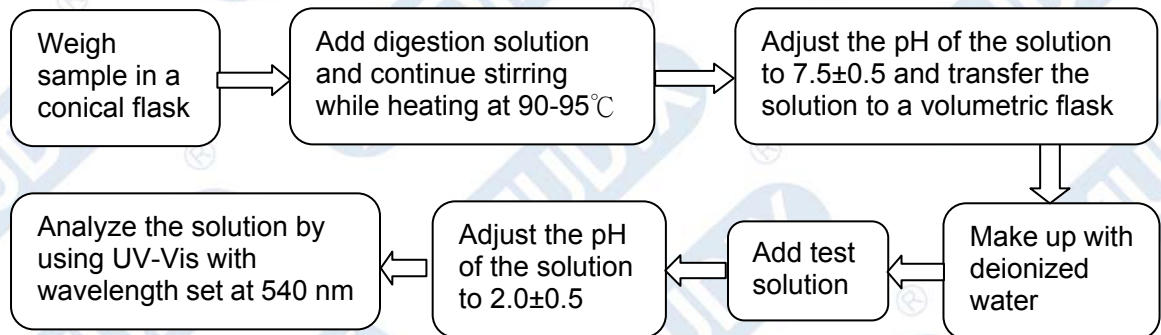
#### 1. Test for Lead (Pb), Cadmium (Cd) contents(IEC 62321-5:2013):



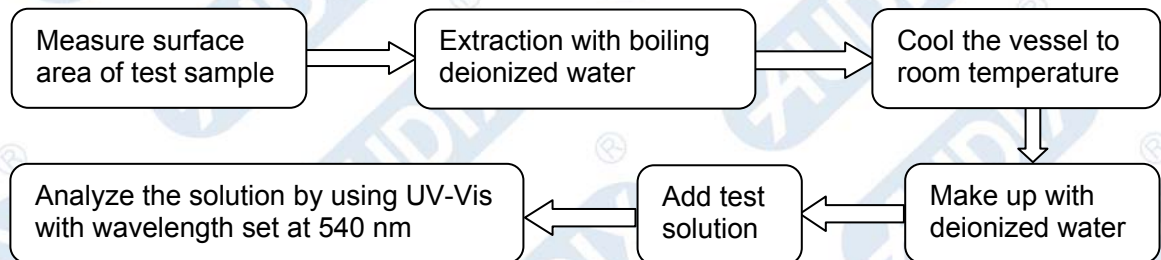
#### 2. Test for Mercury (Hg) contents (IEC 62321-4:2013+A1:2017):



#### 3. Test for Chromium (Cr(VI)) contents (IEC 62321-7-2:2017):

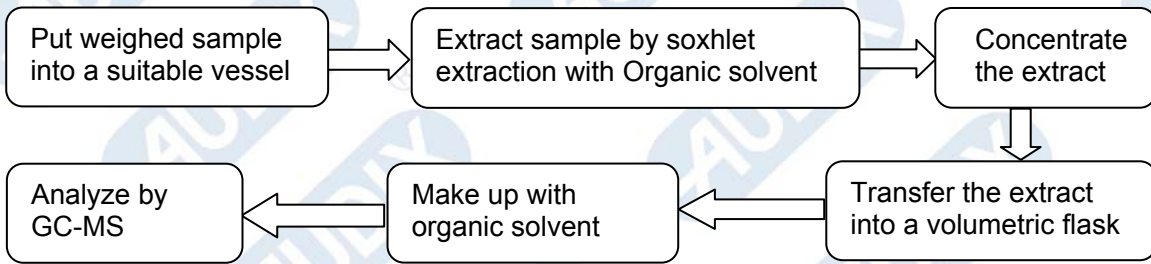


#### 4. Test for Chromium(Cr(VI)) contents (IEC 62321-7-1:2015):

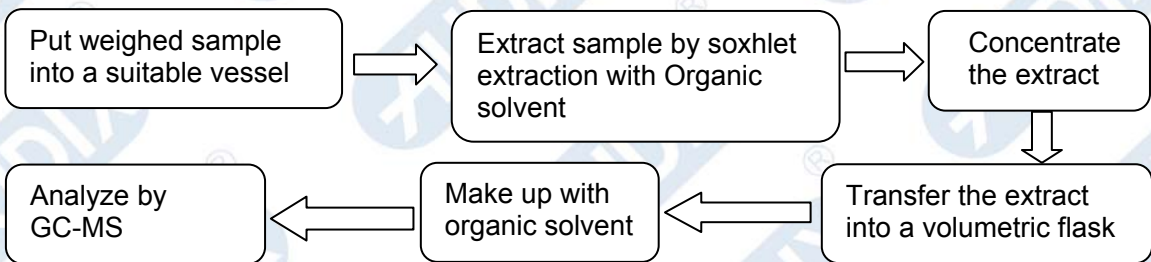


## VERIFICATION REPORT

### 5. Test for PBBs & PBDEs contents (IEC 62321-6:2015):



### 6. Test for DEHP、DBP、BBP、DIBP contents (IEC 62321-8:2017):





**VERIFICATION REPORT****INFORMATION OF TEST SAMPLE****(I) Sample description:**

- (1) White label with black printing
- (2) Silver color metal
- (3) White label with black printing
- (4) White label with black printing
- (5) Black sponge
- (6) Silver color cloth
- (7) Silver color metal
- (8) Silver color metal
- (9) Silver color metal
- (10) Silver color metal
- (11) Silver color screw
- (12) Silver color screw
- (13) Silver color screw
- (14) Silver color screw
- (15) Silver color screw
- (16) Silver color screw
- (17) Silver color metal
- (18) Silver color metal
- (19) White glue
- (20) Transparent plastic
- (21) Silver color metal
- (22) Silver color metal
- (23) Silver color screw
- (24) Silver color screw
- (25) Silver color screw
- (26) Gray rubber
- (27) Yellow fiberboard
- (28) Semi-transparent plastic
- (29) Silver color metal pin
- (30) White plastic
- (31) White plastic
- (32) Silver color metal pin
- (33) Black plastic
- (34) Copper color metal pin
- (35) Black rubber
- (36) Silver color metal
- (37) White ceramic
- (38) Silver color metal
- (39) Silver color metal
- (40) Beige-yellow powder
- (41) Gray plastic
- (42) Black plastic
- (43) Silver color plastic film
- (44) Red plastic with black printing
- (45) Black plastic with white printing
- (46) Black plastic
- (47) Beige-yellow plastic

**Shenzhen Xinhua Testing Measurement Co., Ltd.**Room 4202&4203, Bldg.25, Keyuan West, No.5 Kezhi Road West  
Science and Technology Industrial Park, Nanshan,  
Shenzhen, Guangdong, P.R.China

Tel : (0755) 2663-9005 Fax : (0755) 2663-9006

TRF No.: VP2.0

**VERIFICATION REPORT**

- (48) White plastic
- (49) Silver color metal
- (50) Silver color metal
- (51) Copper color metal
- (52) Copper color metal
- (53) Silver/copper color metal pin
- (54) Copper color metal
- (55) Copper color wires
- (56) Black rubber
- (57) Black ceramic
- (58) Copper color wires
- (59) Copper color wires
- (60) Black ceramic with white printing
- (61) Black glue
- (62) Yellow fiberboard
- (63) Silver color label with black printing
- (64) Black ceramic with green coating
- (65) Yellow fiberboard
- (66) Copper color wires
- (67) Yellow fiberboard
- (68) Silver color label with black printing
- (69) Yellow adhesive tape
- (70) White rubber
- (71) Black ceramic
- (72) Black plastic
- (73) Yellow plastic wire jacket
- (74) Copper color wires
- (75) Yellow adhesive tape
- (76) Semi-transparent rubber
- (77) Black plastic
- (78) Black ceramic
- (79) Yellow plastic wire jacket
- (80) Copper color wires
- (81) Yellow adhesive tape
- (82) Black plastic
- (83) Black ceramic
- (84) Silver color metal
- (85) Copper color wires
- (86) Black ceramic
- (87) Yellow fiberboard
- (88) Orange plastic
- (89) White label with black printing
- (90) Silver color label with black printing
- (91) Yellow adhesive tape
- (92) Black rubber
- (93) Brown plastic
- (94) Semi-transparent rubber
- (95) Silver color metal
- (96) Silver color metal
- (97) Yellow plastic
- (98) Copper color wires

**VERIFICATION REPORT**

- (99) Brown plastic with white printing
- (100) Transparent adhesive tape
- (101) Semi-transparent paper sheet
- (102) Brown plastic
- (103) Black rubber
- (104) Silver color metal
- (105) Dull silver color metal
- (106) Dull silver color metal
- (107) Silver color metal
- (108) Silver color metal
- (109) Green plastic with white printing
- (110) Semi-transparent paper sheet
- (111) Black rubber
- (112) Silver color metal
- (113) Dull silver color metal
- (114) Dull silver color metal
- (115) Silver color metal pin
- (116) Black plastic with white printing
- (117) Semi-transparent paper sheet
- (118) Black rubber
- (119) Silver color metal
- (120) Dull silver color metal
- (121) Dull silver color metal
- (122) Silver color metal pin
- (123) Black plastic
- (124) Silver color metal
- (125) Soldering tin
- (126) Blue plastic wire jacket
- (127) Silver color wires
- (128) Black rubber
- (129) Silver color metal
- (130) Gray plastic wire jacket
- (131) Green/yellow plastic wire jacket
- (132) Blue ceramic
- (133) Black ceramic
- (134) Black ceramic
- (135) Black ceramic with white printing
- (136) Blue ceramic
- (137) Black ceramic
- (138) Black ceramic
- (139) Black ceramic
- (140) Blue ceramic
- (141) Conformal coating with green solder mask & Gold color plated silver color metal pad & Fiberboard
- (142) White ceramic with black printing
- (143) Black ceramic
- (144) Black ceramic
- (145) Black ceramic
- (146) Black ceramic with white printing
- (147) Transparent glue
- (148) Black ceramic

**VERIFICATION REPORT**

- (149) Black ceramic
- (150) White ceramic
- (151) Brown ceramic
- (152) Soldering tin
- (153) Black rubber
- (154) White plastic
- (155) White label with black & green printing
- (156) Black plastic
- (157) Silver color metal
- (158) Silver color screw
- (159) Black plastic wire jacket
- (160) Red plastic wire jacket
- (161) Silver color wires
- (162) Black ceramic
- (163) Soldering tin
- (164) Black ceramic
- (165) Black plastic
- (166) Black ceramic
- (167) Transparent glue
- (168) White ceramic with black printing
- (169) Conformal coating with green solder mask & Gold color plated silver color metal pad & Fiberboard
- (170) Black ceramic
- (171) White ceramic with black printing
- (172) Silver color metal
- (173) Silver color metal
- (174) Silver color metal with brown printing
- (175) Silver color spring
- (176) Black treated metal
- (177) Black rubber
- (178) Black plastic
- (179) Brown glue
- (180) Copper color metal
- (181) Copper color wires
- (182) Silver color metal
- (183) Silver color metal
- (184) Silver color metal
- (185) Silver color metal
- (186) Silver color metal
- (187) Brown plastic
- (188) Black plastic
- (189) Black plastic
- (190) Silver color screw
- (191) Silver color metal
- (192) White plastic
- (193) White plastic
- (194) White plastic
- (195) Silver/copper color metal pin
- (196) Silver color metal pin
- (197) Black plastic wire jacket
- (198) Yellow plastic wire jacket

**VERIFICATION REPORT**

- (199) White/orange plastic wire jacket
- (200) Silver color wires
- (201) Black adhesive tape
- (202) Black ceramic
- (203) Black ceramic
- (204) Black ceramic
- (205) Gray ceramic
- (206) Black ceramic
- (207) Silver color metal
- (208) Black ceramic
- (209) Gray ceramic
- (210) Beige-yellow plastic
- (211) Silver color metal pin
- (212) Beige-yellow plastic
- (213) Beige-yellow plastic
- (214) Silver color metal pin
- (215) Black plastic
- (216) Green plastic
- (217) Red plastic
- (218) Silver color metal pin
- (219) Silver color metal
- (220) Silver color spring
- (221) Silver/copper color metal pin
- (222) Black plastic
- (223) Black plastic
- (224) Black plastic
- (225) Silver color metal
- (226) Silver color metal
- (227) Silver/copper color metal
- (228) Silver color metal
- (229) Green plastic
- (230) Black plastic
- (231) Silver color metal pin
- (232) Yellow plastic
- (233) Silver color metal pin
- (234) Black plastic with white printing
- (235) Black ceramic
- (236) Black ceramic
- (237) Red wires
- (238) Green wires
- (239) Copper color wires
- (240) Brown plastic with gold printing
- (241) Transparent adhesive tape
- (242) Semi-transparent paper sheet
- (243) Black rubber
- (244) Silver color metal
- (245) Dull silver color metal
- (246) Dull silver color metal
- (247) Silver color metal pin
- (248) Brown ceramic
- (249) White plastic

**VERIFICATION REPORT**

- (250) Brown ceramic
- (251) Brown ceramic
- (252) Black ceramic
- (253) Black ceramic
- (254) Conformal coating with black solder mask & Gold color plated silver color metal pad & Fiberboard
- (255) Soldering tin
- (256) Brown ceramic
- (257) Brown ceramic
- (258) White plastic
- (259) Black plastic
- (260) White label with black & green printing
- (261) Black plastic
- (262) Silver color metal
- (263) Silver color screw
- (264) Silver color metal pin
- (265) Blue plastic wire jacket
- (266) Black plastic wire jacket
- (267) Red plastic wire jacket
- (268) Yellow plastic wire jacket
- (269) Silver color wires
- (270) Silver color metal pin
- (271) Blue plastic wire jacket
- (272) Black plastic wire jacket
- (273) Red plastic wire jacket
- (274) Yellow plastic wire jacket
- (275) Black ceramic
- (276) White ceramic with black printing
- (277) White ceramic with black printing
- (278) Soldering tin
- (279) Black ceramic
- (280) Conformal coating with green solder mask & Gold color plated silver color metal pad & Fiberboard
- (281) Silver color metal
- (282) Silver color metal with brown printing
- (283) Silver color metal
- (284) Silver color metal
- (285) Silver color metal
- (286) Black rubber
- (287) Black plastic
- (288) Brown glue
- (289) Silver color spring
- (290) Black treated metal
- (291) Copper color wires
- (292) Silver color metal
- (293) Silver color metal
- (294) Silver color metal
- (295) Silver color metal
- (296) Brown plastic
- (297) Silver color metal
- (298) Silver color metal

## VERIFICATION REPORT

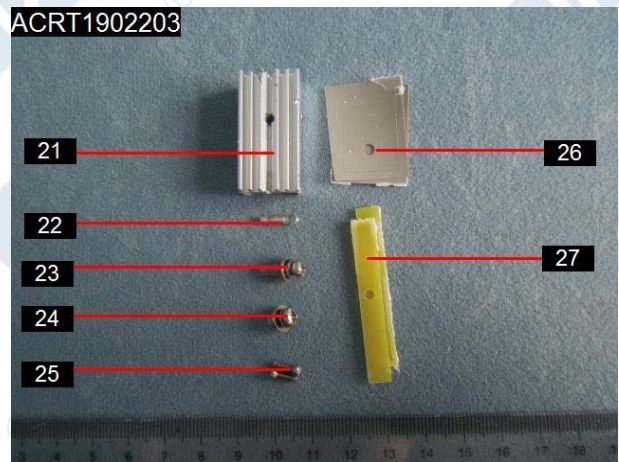
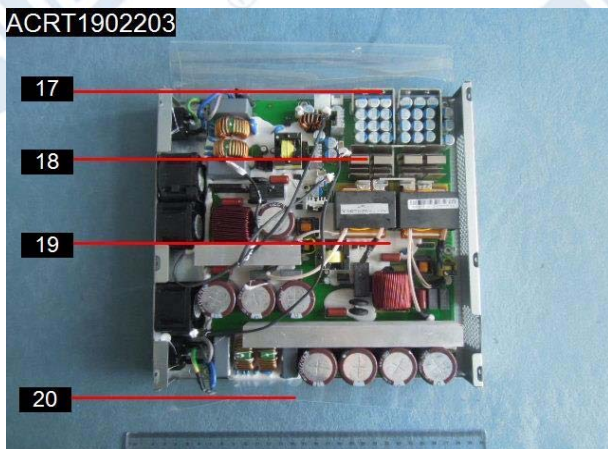
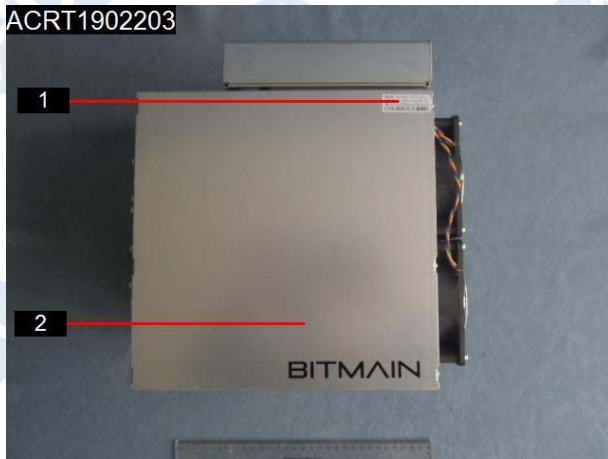
- (299) Gray ceramic with black printing
- (300) White label with black & green printing
- (301) Gray ceramic with black printing
- (302) Silver color metal with blue printing
- (303) Dull silver color metal
- (304) Dull silver color metal
- (305) Silver color metal pin
- (306) Transparent adhesive tape
- (307) Semi-transparent paper sheet
- (308) Black plastic
- (309) Black rubber
- (310) Silver color metal with black printing
- (311) Dull silver color metal
- (312) Dull silver color metal
- (313) Silver color metal pin
- (314) Yellow adhesive tape
- (315) Semi-transparent paper sheet
- (316) Black rubber
- (317) Black plastic
- (318) Silver color glass
- (319) Conformal coating with green solder mask & Gold color plated silver color metal pad & Fiberboard
- (320) Black ceramic
- (321) White label with black printing
- (322) Black ceramic
- (323) Black ceramic with white printing
- (324) White ceramic with black printing
- (325) White label with black & orange printing
- (326) White label with black & yellow printing
- (327) White label with black printing
- (328) Black rubber
- (329) Black ceramic with green coating
- (330) Gray plastic wire jacket
- (331) Blue plastic wire jacket
- (332) Silver color wires
- (333) Black plastic
- (334) Conformal coating with green solder mask & Gold color plated silver color metal pad & Fiberboard
- (335) Silver color metal with red printing
- (336) Dull silver color metal
- (337) Black treated metal
- (338) Silver color metal pin
- (339) Yellow adhesive tape
- (340) Gray paper
- (341) Black rubber
- (342) Black plastic

# VERIFICATION REPORT

## (II) Photo(s) of test sample(s):

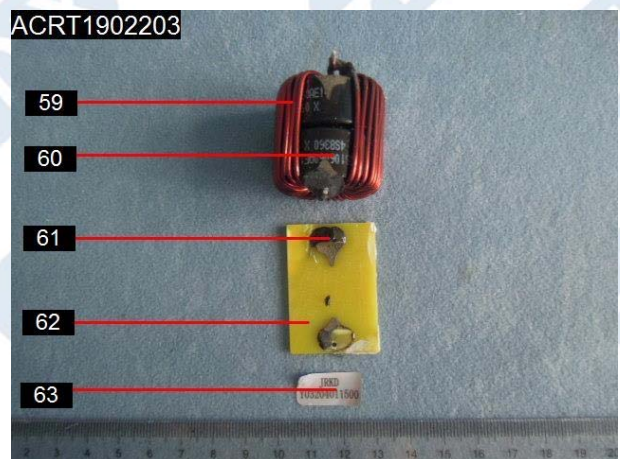
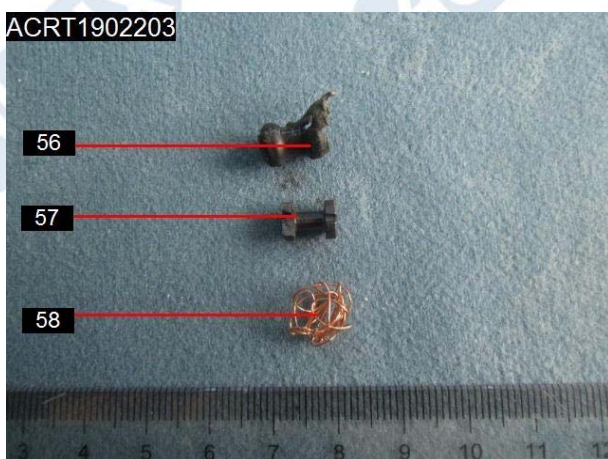
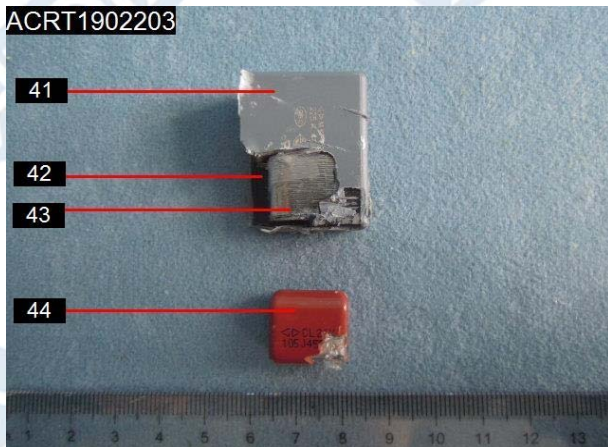
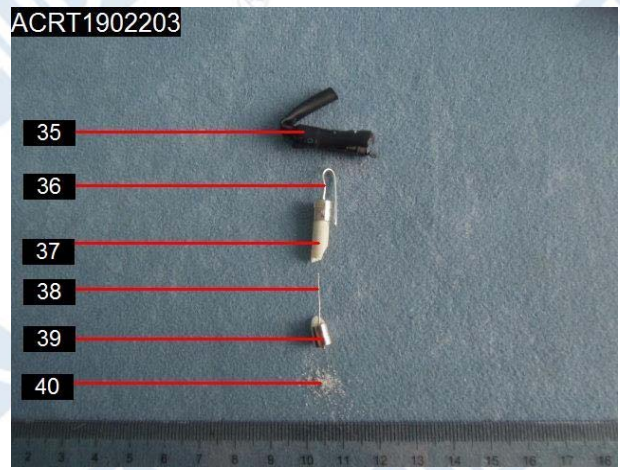
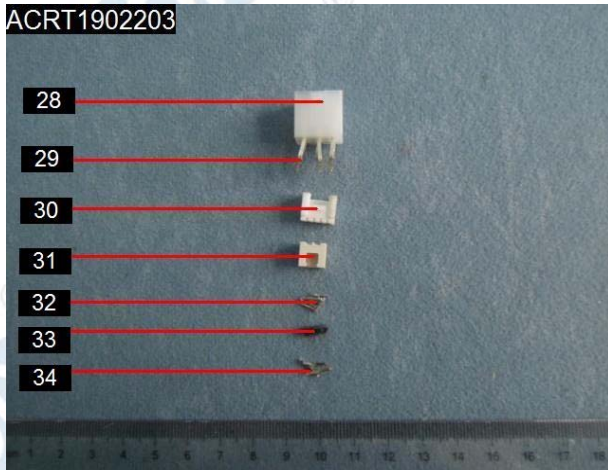


(Whole product)

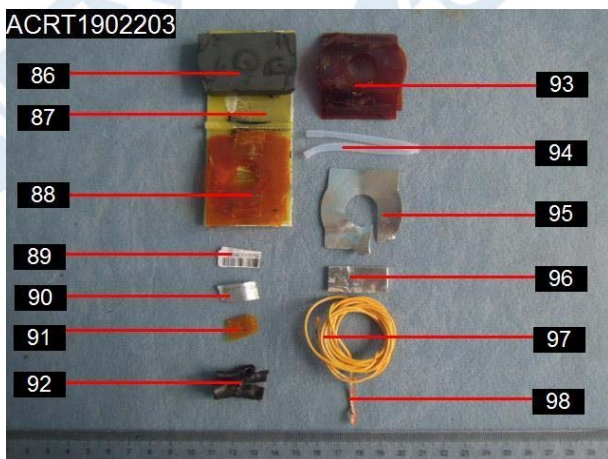
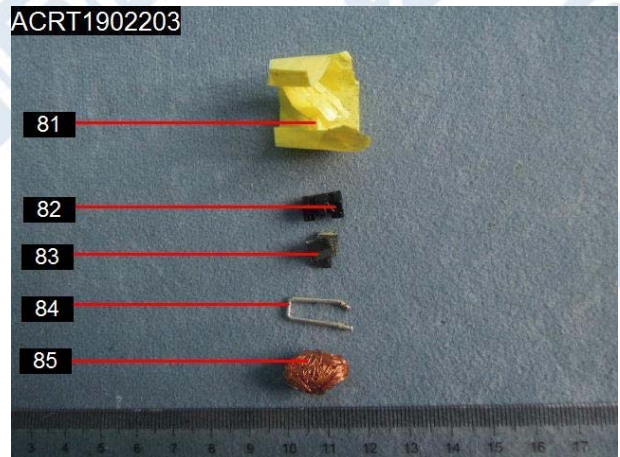
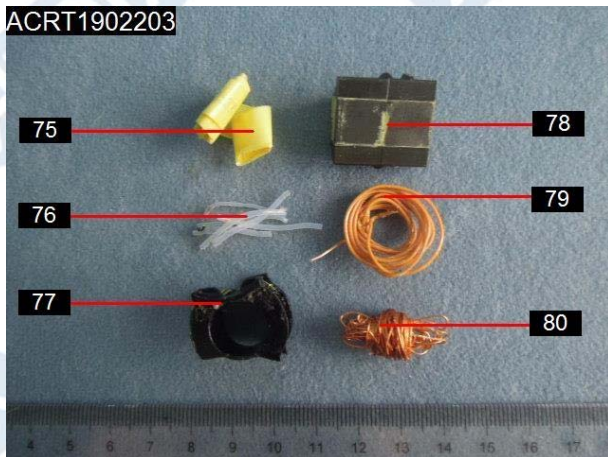
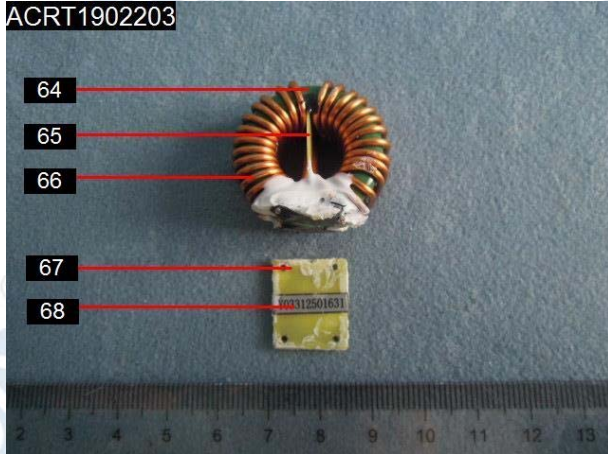




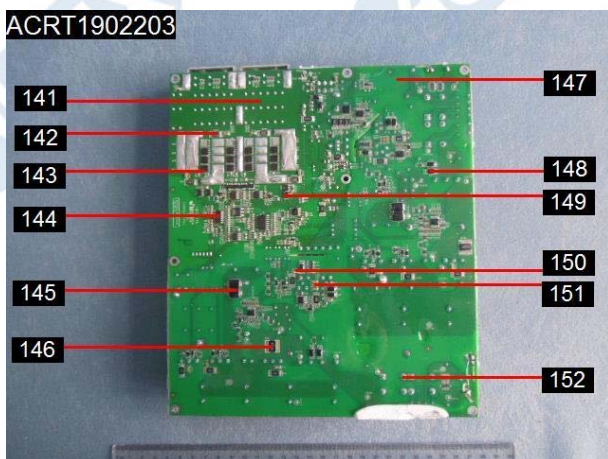
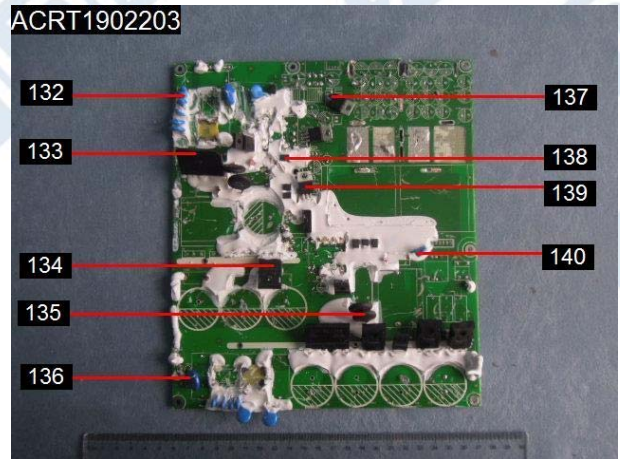
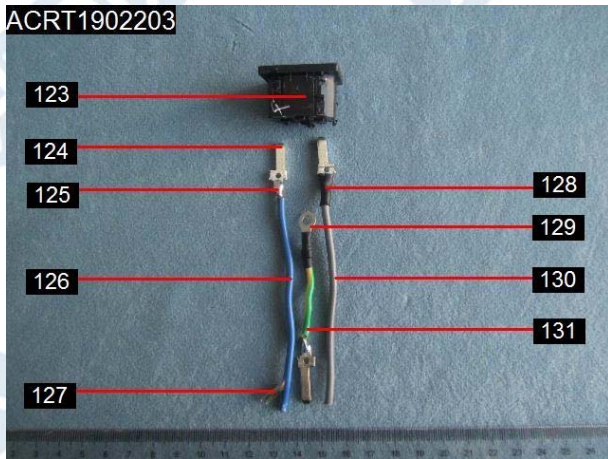
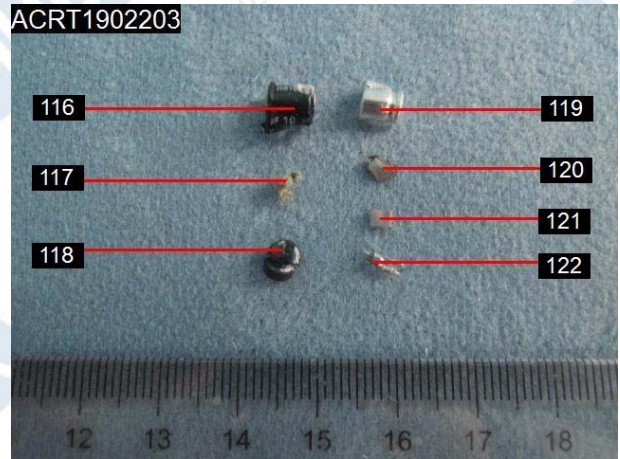
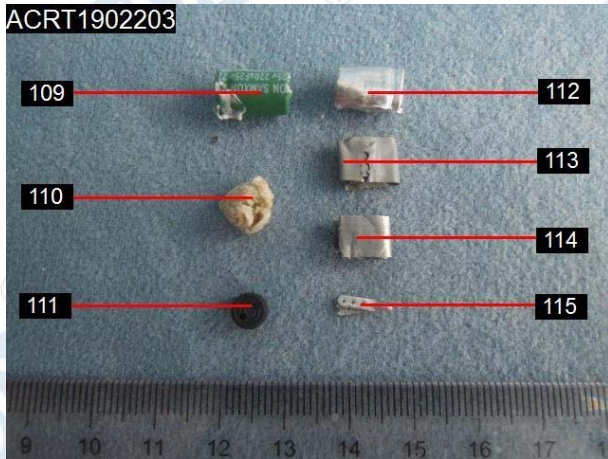
# VERIFICATION REPORT



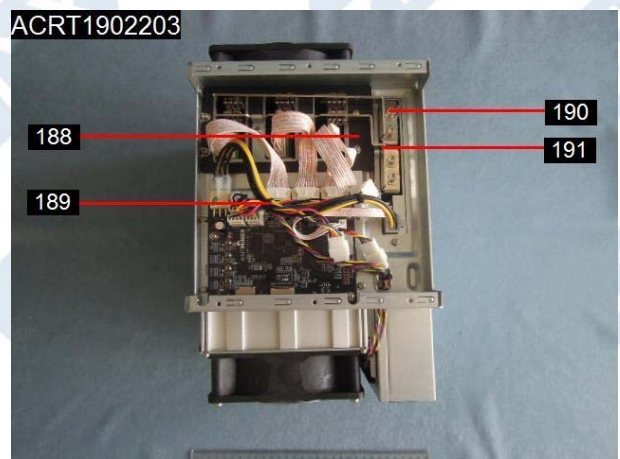
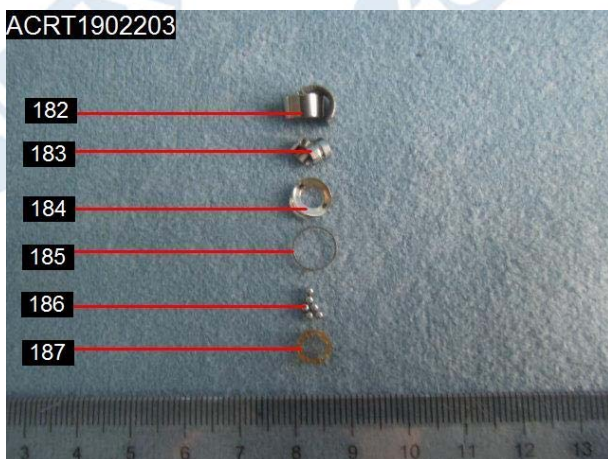
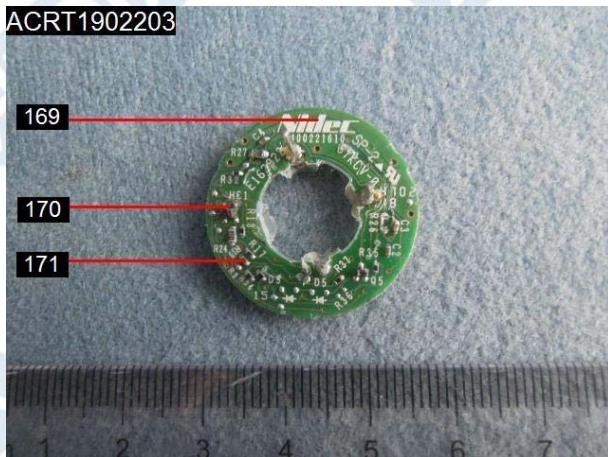
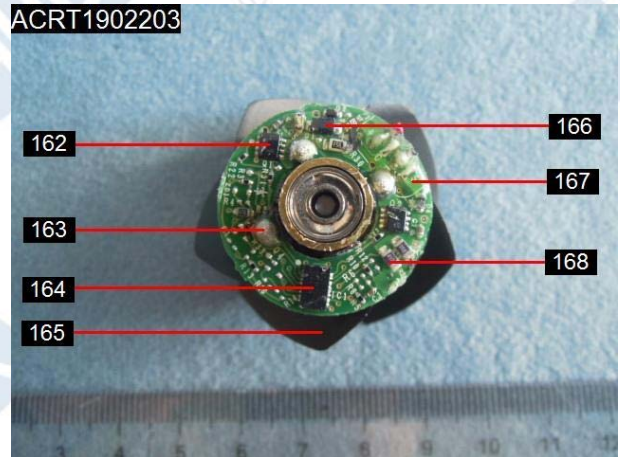
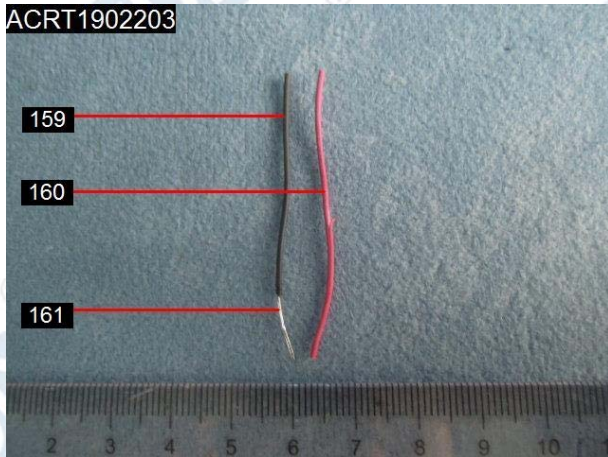
# VERIFICATION REPORT



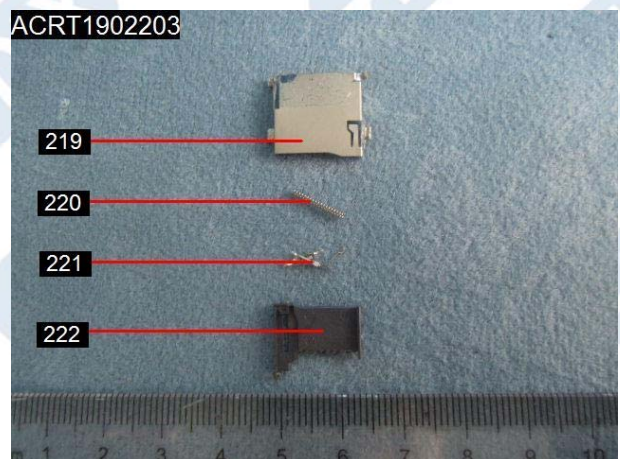
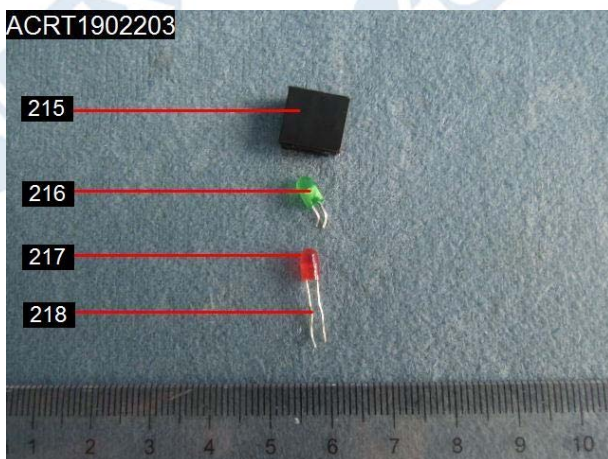
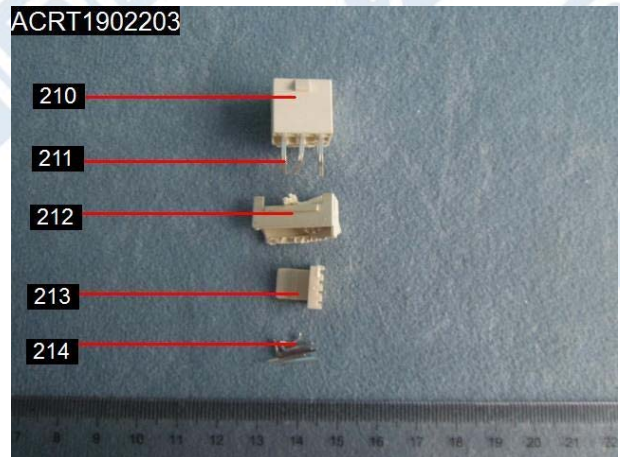
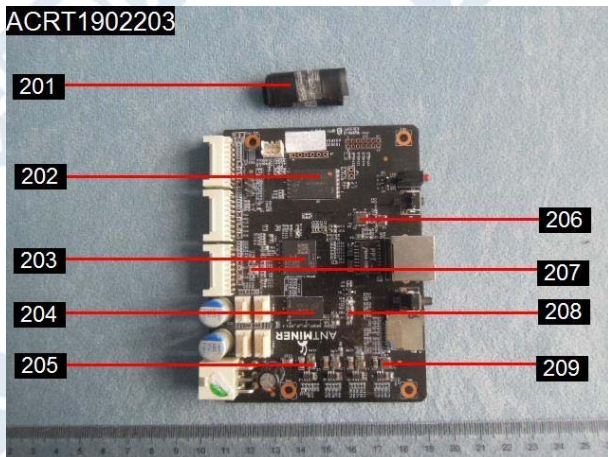
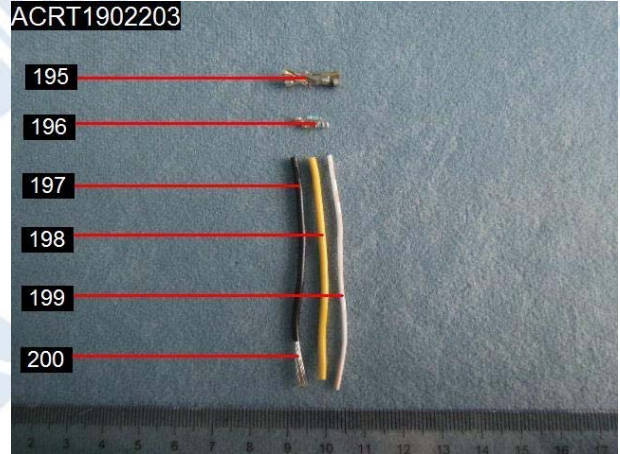
# VERIFICATION REPORT



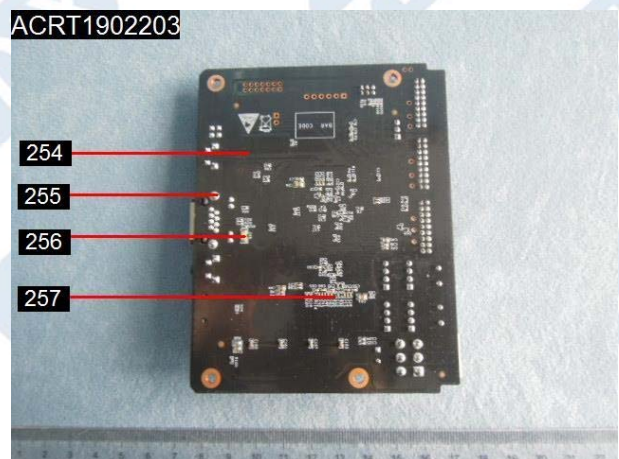
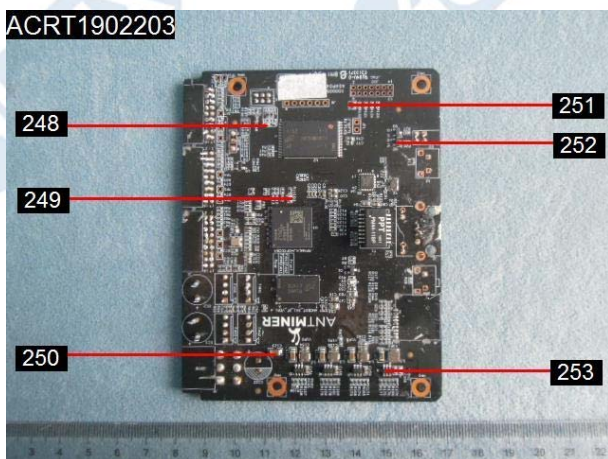
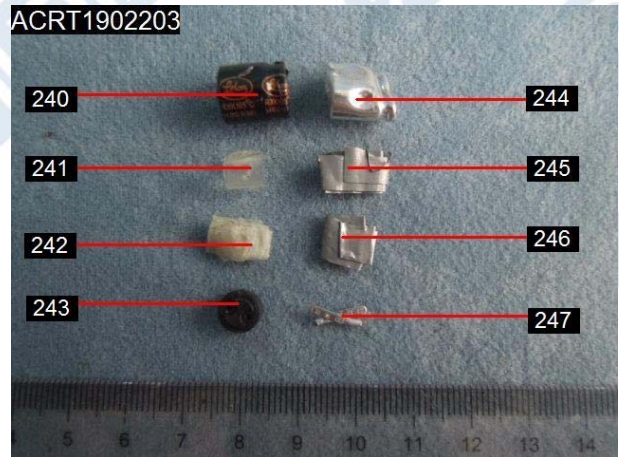
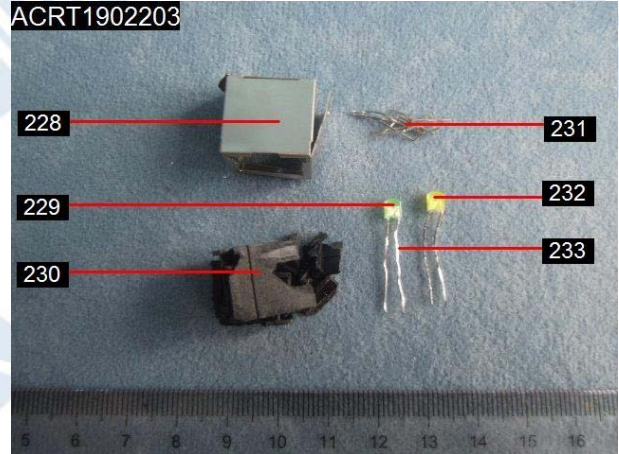
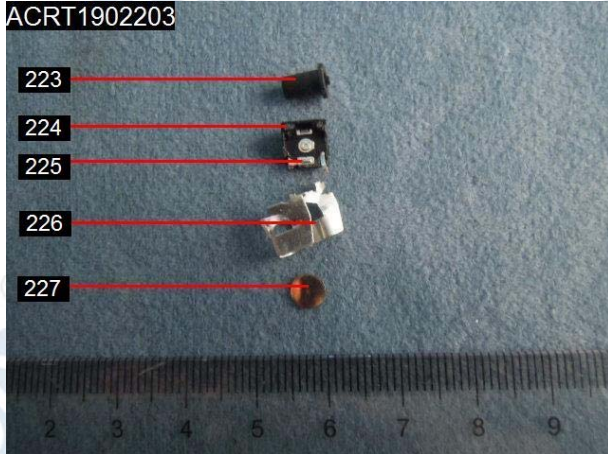
# VERIFICATION REPORT



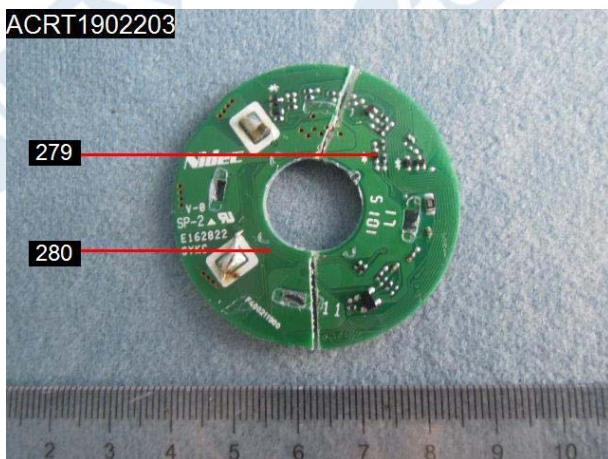
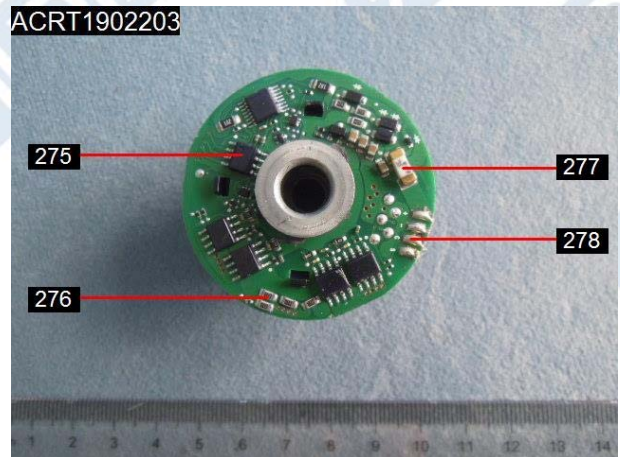
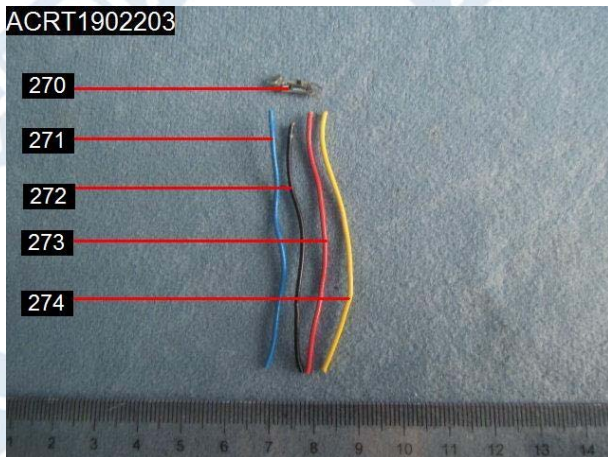
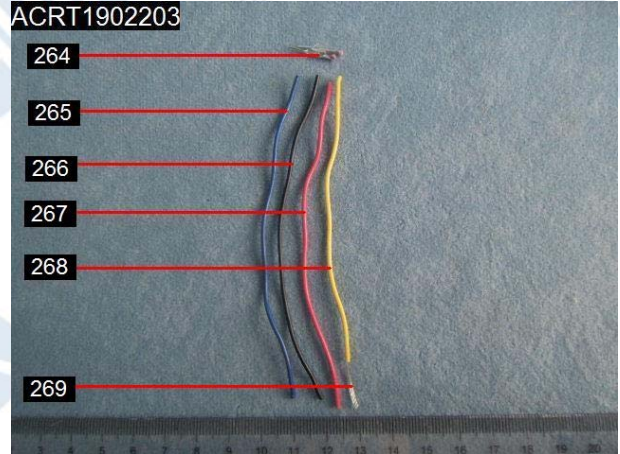
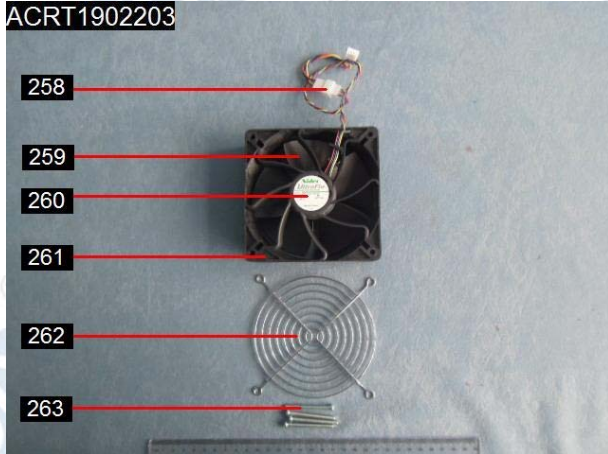
# VERIFICATION REPORT



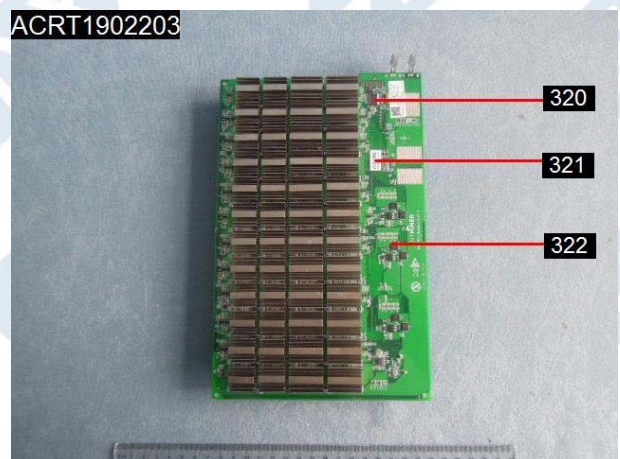
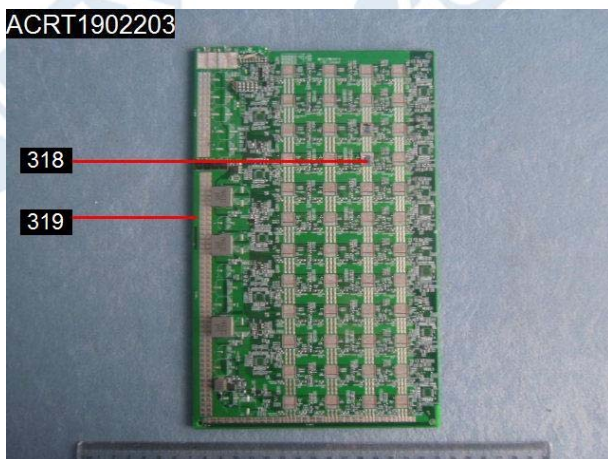
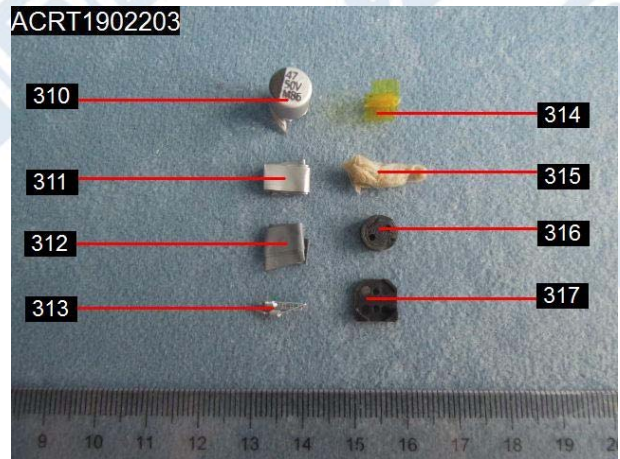
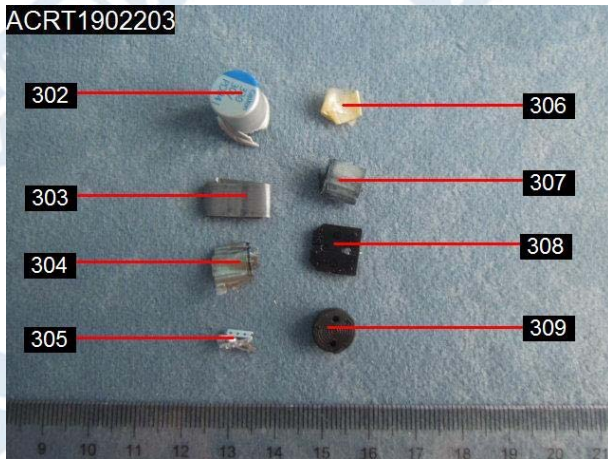
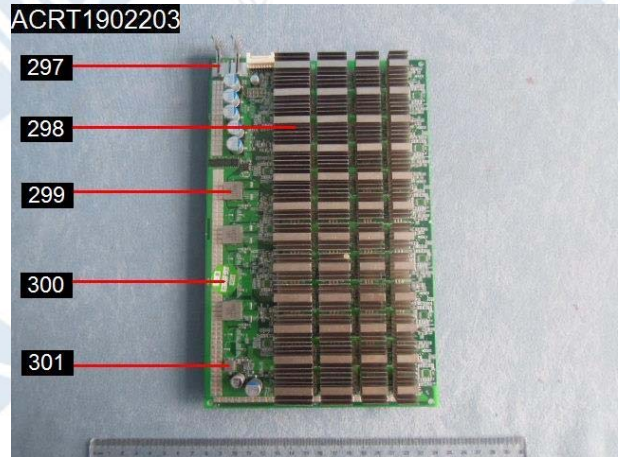
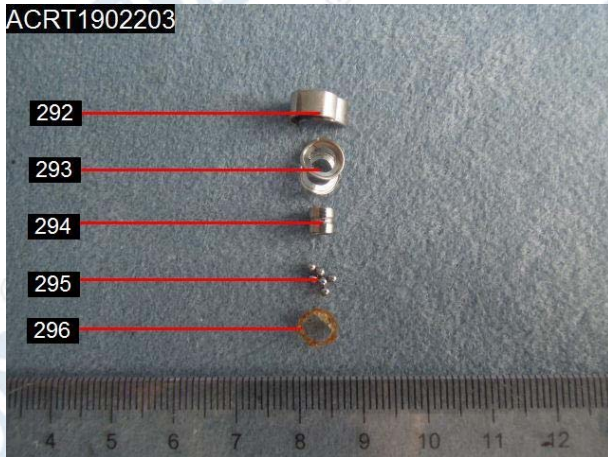
# VERIFICATION REPORT



# VERIFICATION REPORT

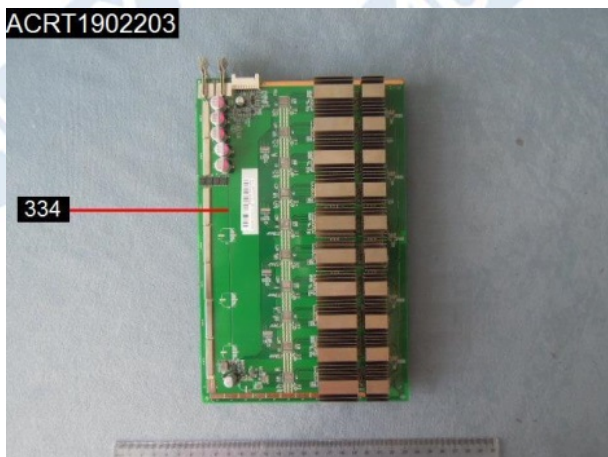
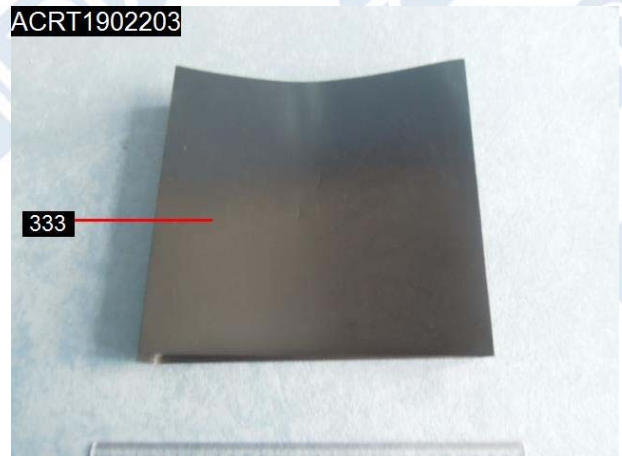
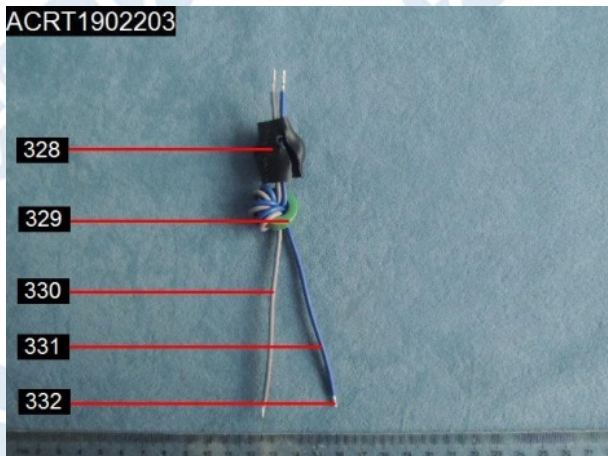
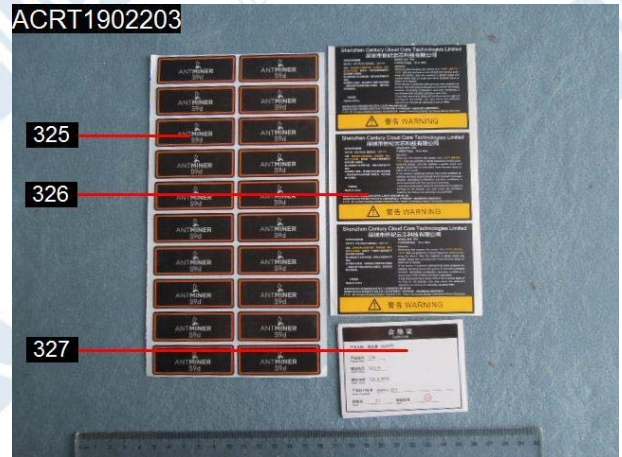
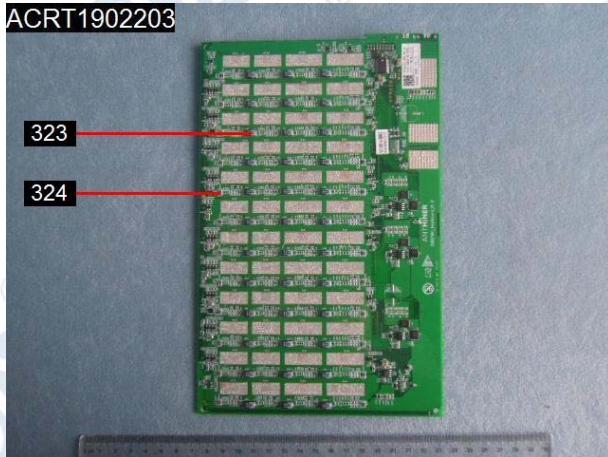


# VERIFICATION REPORT





# VERIFICATION REPORT



\*\*\* End of report \*\*\*