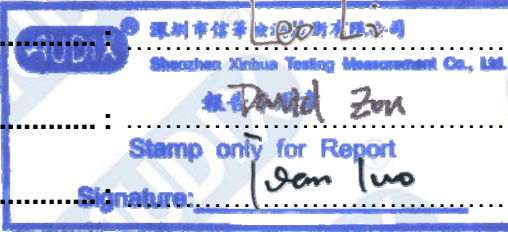


VERIFICATION REPORT

Report No. : ACRT1903203
 Applicant : Shenzhen Century Cloud Core Technologies Limited
 Address : F1-F5, B1 Complex Building, Gangtuo Industrial Park, Yabian
 Community, Shajing Town, Baoan District, Shenzhen

Sample Name : SERVER
 Model No. : 240-Z
 Date of sample received : Mar. 06, 2019
 Test period : Mar. 06, 2019 to Mar. 20, 2019
 Test request : As specified by client, Split the sample and determine the Lead,
 Cadmium, Mercury, Hexavalent Chromium, PBBs&PBDEs and
 Phthalates such as Bis(2-ethylhexyl) phthalate (DEHP), Butyl
 benzyl phthalate (BBP), Dibutyl phthalate (DBP), Dissobutyl
 phthalate (DIBP) content in the submitted samples.
 Test Method : Please refer to the following page(s).
 Test result : Please refer to the following page(s).
 Conclusion : When tested as specified, the results shown on the report did
 not exceed the required limit of EU RoHS Directive 2015/863
 amending Annex II to Directive 2011/65/EU.

Written by
 (Signature)
 Reviewed by
 (Signature)
 Approved by
 (Signature/Position)

Technical Manager

Approved date : Mar. 20, 2019

Remark: The test result presented in this report relate only to the sample(s) tested.
 This report is considered invalidated without the Special Seal for Inspection of the testing laboratory. This
 report shall not be altered, increased or deleted.
 Without the written approval of the issuing testing laboratory, this report shall not be reproduced, duplicated,
 except in full, and published as advertisement

VERIFICATION REPORT

Test Results (Unit: mg/kg)

(1) To determine Lead, Cadmium, Mercury, Hexavalent Chromium, PBBs&PBDEs:

TESTED MATERIAL	SCHEME	TARGET RoHS SUBSTANCES	TEST METHOD USED	XRF RESULT (in mg/kg)	CHEMICAL TEST RESULT (in mg/kg)
1	1	All	XRF + Chemical	Cd: N.D	Cr ⁶⁺ : Negative
				Cr: Inconclusive	
				Pb: N.D	
				Hg: N.D	
				Br: N.D	
2	2	All	XRF	Cd: N.D	N/T
				Cr: N.D	
				Pb: N.D	
				Hg: N.D	
				Br: N.D	
3	3	All	XRF	Cd: N.D	N/T
				Cr: N.D	
				Pb: N.D	
				Hg: N.D	
				Br: N.D	
4	4	All	XRF	Cd: N.D	N/T
				Cr: N.D	
				Pb: N.D	
				Hg: N.D	
				Br: N.D	
5	5	All	XRF	Cd: N.D	N/T
				Cr: N.D	
				Pb: N.D	
				Hg: N.D	
				Br: N.D	
6	6	All	XRF	Cd: N.D	N/T
				Cr: N.D	
				Pb: N.D	
				Hg: N.D	
				Br: N.D	
7	7	All	XRF + Chemical	Cd: N.D	Cr ⁶⁺ : Negative
				Cr: Inconclusive	
				Pb: N.D	
				Hg: N.D	
				Br: N.D	
8	8	All	XRF + Chemical	Cd: N.D	Cr ⁶⁺ : Negative
				Cr: Inconclusive	
				Pb: N.D	
				Hg: N.D	
				Br: N.D	

VERIFICATION REPORT

TESTED MATERIAL	SCHEME	TARGET RoHS SUBSTANCES	TEST METHOD USED	XRF RESULT (in mg/kg)	CHEMICAL TEST RESULT (in mg/kg)
9	9	All	XRF	Cd: N.D	N/T
				Cr: N.D	
				Pb: N.D	
				Hg: N.D	
				Br: N.D	
10	10	All	XRF + Chemical	Cd: N.D	Cr ⁶⁺ : Negative
				Cr: Inconclusive	
				Pb: N.D	
				Hg: N.D	
				Br: N.D	
11	11	All	XRF	Cd: N.D	N/T
				Cr: N.D	
				Pb: N.D	
				Hg: N.D	
				Br: N.D	
12	12	All	XRF	Cd: N.D	N/T
				Cr: N.D	
				Pb: N.D	
				Hg: N.D	
				Br: N.D	
13	13	All	XRF	Cd: N.D	N/T
				Cr: N.D	
				Pb: N.D	
				Hg: N.D	
				Br: N.D	
14	14	All	XRF	Cd: N.D	N/T
				Cr: N.D	
				Pb: N.D	
				Hg: N.D	
				Br: N.D	
15	15	All	XRF + Chemical	Cd: N.D	Cr ⁶⁺ : N.D(<8.0)
				Cr: Inconclusive	
				Pb: N.D	
				Hg: N.D	
				Br: N.D	
16	16	All	XRF	Cd: N.D	N/T
				Cr: N.D	
				Pb: N.D	
				Hg: N.D	
				Br: N.D	
17	17	All	XRF + Chemical	Cd: N.D	Cr ⁶⁺ : N.D(<8.0)
				Cr: Inconclusive	
				Pb: N.D	
				Hg: N.D	
				Br: N.D	

VERIFICATION REPORT

TESTED MATERIAL	SCHEME	TARGET RoHS SUBSTANCES	TEST METHOD USED	XRF RESULT (in mg/kg)	CHEMICAL TEST RESULT (in mg/kg)
18	18	All	XRF	Cd: N.D	N/T
				Cr: N.D	
				Pb: N.D	
				Hg: N.D	
				Br: N.D	
19	19	All	XRF	Cd: N.D	N/T
				Cr: N.D	
				Pb: N.D	
				Hg: N.D	
				Br: N.D	
20	20	All	XRF	Cd: N.D	N/T
				Cr: N.D	
				Pb: N.D	
				Hg: N.D	
				Br: N.D	
21	21	All	XRF + Chemical	Cd: N.D	PBBs: N.D(<5.0) PBDEs: N.D(<5.0)
				Cr: N.D	
				Pb: N.D	
				Hg: N.D	
				Br: Inconclusive	
22	22	All	XRF	Cd: N.D	N/T
				Cr: N.D	
				Pb: N.D	
				Hg: N.D	
				Br: N.D	
23	23	All	XRF	Cd: N.D	N/T
				Cr: N.D	
				Pb: N.D	
				Hg: N.D	
				Br: N.D	
24	24	All	XRF	Cd: N.D	N/T
				Cr: N.D	
				Pb: N.D	
				Hg: N.D	
				Br: N.D	
25	25	All	XRF + Chemical	Cd: N.D	PBBs: N.D(<5.0) PBDEs: N.D(<5.0)
				Cr: N.D	
				Pb: N.D	
				Hg: N.D	
				Br: Inconclusive	
26	26	All	XRF	Cd: N.D	N/T
				Cr: N.D	
				Pb: N.D	
				Hg: N.D	
				Br: N.D	

VERIFICATION REPORT

TESTED MATERIAL	SCHEME	TARGET RoHS SUBSTANCES	TEST METHOD USED	XRF RESULT (in mg/kg)	CHEMICAL TEST RESULT (in mg/kg)
27	27	All	XRF	Cd: N.D	N/T
				Cr: N.D	
				Pb: N.D	
				Hg: N.D	
				Br: N.D	
28	28	All	XRF	Cd: N.D	N/T
				Cr: N.D	
				Pb: N.D	
				Hg: N.D	
				Br: N.D	
29	29	All	XRF	Cd: N.D	N/T
				Cr: N.D	
				Pb: N.D	
				Hg: N.D	
				Br: N.D	
30	30	All	XRF	Cd: N.D	N/T
				Cr: N.D	
				Pb: N.D	
				Hg: N.D	
				Br: N.D	
31	31	All	XRF	Cd: N.D	N/T
				Cr: N.D	
				Pb: N.D	
				Hg: N.D	
				Br: N.D	
32	32	All	XRF	Cd: N.D	N/T
				Cr: N.D	
				Pb: N.D	
				Hg: N.D	
				Br: N.D	
33	33	All	XRF	Cd: N.D	N/T
				Cr: N.D	
				Pb: N.D	
				Hg: N.D	
				Br: N.D	
34	34	All	XRF	Cd: N.D	N/T
				Cr: N.D	
				Pb: N.D	
				Hg: N.D	
				Br: N.D	
35	35	All	XRF	Cd: N.D	N/T
				Cr: N.D	
				Pb: N.D	
				Hg: N.D	
				Br: N.D	

VERIFICATION REPORT

TESTED MATERIAL	SCHEME	TARGET RoHS SUBSTANCES	TEST METHOD USED	XRF RESULT (in mg/kg)	CHEMICAL TEST RESULT (in mg/kg)
36	36	All	XRF	Cd: N.D	N/T
				Cr: N.D	
				Pb: N.D	
				Hg: N.D	
				Br: N.D	
37	37	All	XRF	Cd: N.D	N/T
				Cr: N.D	
				Pb: N.D	
				Hg: N.D	
				Br: N.D	
38	38	All	XRF	Cd: N.D	N/T
				Cr: N.D	
				Pb: N.D	
				Hg: N.D	
				Br: N.D	
39	39	All	XRF + Chemical	Cd: N.D	PBBs: N.D(<5.0) PBDEs: N.D(<5.0)
				Cr: N.D	
				Pb: N.D	
				Hg: N.D	
				Br: Inconclusive	
40	40	All	XRF + Chemical	Cd: N.D	PBBs: N.D(<5.0) PBDEs: N.D(<5.0)
				Cr: N.D	
				Pb: N.D	
				Hg: N.D	
				Br: Inconclusive	
41	41	All	XRF	Cd: N.D	N/T
				Cr: N.D	
				Pb: N.D	
				Hg: N.D	
				Br: N.D	
42	42	All	XRF + Chemical	Cd: N.D	Cr ⁶⁺ : Negative
				Cr: Inconclusive	
				Pb: N.D	
				Hg: N.D	
				Br: N.D	
43	43	All	XRF	Cd: N.D	N/T
				Cr: N.D	
				Pb: N.D	
				Hg: N.D	
				Br: N.D	
44	44	All	XRF	Cd: N.D	N/T
				Cr: N.D	
				Pb: N.D	
				Hg: N.D	
				Br: N.D	

VERIFICATION REPORT

TESTED MATERIAL	SCHEME	TARGET RoHS SUBSTANCES	TEST METHOD USED	XRF RESULT (in mg/kg)	CHEMICAL TEST RESULT (in mg/kg)
45	45	All	XRF	Cd: N.D	N/T
				Cr: N.D	
				Pb: N.D	
				Hg: N.D	
				Br: N.D	
46	46	All	XRF	Cd: N.D	N/T
				Cr: N.D	
				Pb: N.D	
				Hg: N.D	
				Br: N.D	
47	47	All	XRF	Cd: N.D	N/T
				Cr: N.D	
				Pb: N.D	
				Hg: N.D	
				Br: N.D	
48	48	All	XRF	Cd: N.D	N/T
				Cr: N.D	
				Pb: N.D	
				Hg: N.D	
				Br: N.D	
49	49	All	XRF	Cd: N.D	N/T
				Cr: N.D	
				Pb: N.D	
				Hg: N.D	
				Br: N.D	
50	50	All	XRF	Cd: N.D	N/T
				Cr: N.D	
				Pb: N.D	
				Hg: N.D	
				Br: N.D	
51	51	All	XRF	Cd: N.D	N/T
				Cr: N.D	
				Pb: N.D	
				Hg: N.D	
				Br: N.D	
52	52	All	XRF	Cd: N.D	N/T
				Cr: N.D	
				Pb: N.D	
				Hg: N.D	
				Br: N.D	
53	53	All	XRF	Cd: N.D	N/T
				Cr: N.D	
				Pb: N.D	
				Hg: N.D	
				Br: N.D	

VERIFICATION REPORT

TESTED MATERIAL	SCHEME	TARGET RoHS SUBSTANCES	TEST METHOD USED	XRF RESULT (in mg/kg)	CHEMICAL TEST RESULT (in mg/kg)
54	54	All	XRF	Cd: N.D	N/T
				Cr: N.D	
				Pb: N.D	
				Hg: N.D	
				Br: N.D	
55	55	All	XRF	Cd: N.D	N/T
				Cr: N.D	
				Pb: N.D	
				Hg: N.D	
				Br: N.D	
56	56	All	XRF	Cd: N.D	N/T
				Cr: N.D	
				Pb: N.D	
				Hg: N.D	
				Br: N.D	
57	57	All	XRF	Cd: N.D	N/T
				Cr: N.D	
				Pb: N.D	
				Hg: N.D	
				Br: N.D	
58	58	All	XRF	Cd: N.D	N/T
				Cr: N.D	
				Pb: N.D	
				Hg: N.D	
				Br: N.D	
59	59	All	XRF	Cd: N.D	N/T
				Cr: N.D	
				Pb: N.D	
				Hg: N.D	
				Br: N.D	
60	60	All	XRF	Cd: N.D	N/T
				Cr: N.D	
				Pb: N.D	
				Hg: N.D	
				Br: N.D	
61	61	All	XRF	Cd: N.D	N/T
				Cr: N.D	
				Pb: N.D	
				Hg: N.D	
				Br: N.D	
62	62	All	XRF	Cd: N.D	N/T
				Cr: N.D	
				Pb: N.D	
				Hg: N.D	
				Br: N.D	

VERIFICATION REPORT

TESTED MATERIAL	SCHEME	TARGET RoHS SUBSTANCES	TEST METHOD USED	XRF RESULT (in mg/kg)	CHEMICAL TEST RESULT (in mg/kg)
63	63	All	XRF	Cd: N.D	N/T
				Cr: N.D	
				Pb: N.D	
				Hg: N.D	
				Br: N.D	
64	64	All	XRF	Cd: N.D	N/T
				Cr: N.D	
				Pb: N.D	
				Hg: N.D	
				Br: N.D	
65	65	All	XRF	Cd: N.D	N/T
				Cr: N.D	
				Pb: N.D	
				Hg: N.D	
				Br: N.D	
66	66	All	XRF	Cd: N.D	N/T
				Cr: N.D	
				Pb: N.D	
				Hg: N.D	
				Br: N.D	
67	67	All	XRF	Cd: N.D	N/T
				Cr: N.D	
				Pb: N.D	
				Hg: N.D	
				Br: N.D	
68	68	All	XRF	Cd: N.D	N/T
				Cr: N.D	
				Pb: N.D	
				Hg: N.D	
				Br: N.D	
69	69	All	XRF	Cd: N.D	N/T
				Cr: N.D	
				Pb: N.D	
				Hg: N.D	
				Br: N.D	
70	70	All	XRF	Cd: N.D	N/T
				Cr: N.D	
				Pb: N.D	
				Hg: N.D	
				Br: N.D	
71	71	All	XRF	Cd: N.D	N/T
				Cr: N.D	
				Pb: N.D	
				Hg: N.D	
				Br: N.D	

VERIFICATION REPORT

TESTED MATERIAL	SCHEME	TARGET RoHS SUBSTANCES	TEST METHOD USED	XRF RESULT (in mg/kg)	CHEMICAL TEST RESULT (in mg/kg)
72	72	All	XRF + Chemical	Cd: N.D	PBBs: N.D(<5.0) PBDEs: N.D(<5.0)
				Cr: N.D	
				Pb: N.D	
				Hg: N.D	
				Br: Inconclusive	
73	73	All	XRF	Cd: N.D	N/T
				Cr: N.D	
				Pb: N.D	
				Hg: N.D	
				Br: N.D	
74	74	All	XRF	Cd: N.D	N/T
				Cr: N.D	
				Pb: N.D	
				Hg: N.D	
				Br: N.D	
75	75	All	XRF + Chemical	Cd: N.D	PBBs: N.D(<5.0) PBDEs: N.D(<5.0)
				Cr: N.D	
				Pb: N.D	
				Hg: N.D	
				Br: Inconclusive	
76	76	All	XRF	Cd: N.D	N/T
				Cr: N.D	
				Pb: N.D	
				Hg: N.D	
				Br: N.D	
77	77	All	XRF + Chemical	Cd: N.D	PBBs: N.D(<5.0) PBDEs: N.D(<5.0)
				Cr: N.D	
				Pb: N.D	
				Hg: N.D	
				Br: Inconclusive	
78	78	All	XRF + Chemical	Cd: N.D	Cr ⁶⁺ : Negative
				Cr: Inconclusive	
				Pb: N.D	
				Hg: N.D	
				Br: N.D	
79	79	All	XRF	Cd: N.D	N/T
				Cr: N.D	
				Pb: N.D	
				Hg: N.D	
				Br: N.D	
80	80	All	XRF	Cd: N.D	N/T
				Cr: N.D	
				Pb: N.D	
				Hg: N.D	
				Br: N.D	

VERIFICATION REPORT

TESTED MATERIAL	SCHEME	TARGET RoHS SUBSTANCES	TEST METHOD USED	XRF RESULT (in mg/kg)	CHEMICAL TEST RESULT (in mg/kg)
81	81	All	XRF	Cd: N.D	N/T
				Cr: N.D	
				Pb: N.D	
				Hg: N.D	
				Br: N.D	
82	82	All	XRF	Cd: N.D	N/T
				Cr: N.D	
				Pb: N.D	
				Hg: N.D	
				Br: N.D	
83	83	All	XRF	Cd: N.D	N/T
				Cr: N.D	
				Pb: N.D	
				Hg: N.D	
				Br: N.D	
84	84	All	XRF	Cd: N.D	N/T
				Cr: N.D	
				Pb: N.D	
				Hg: N.D	
				Br: N.D	
85	85	All	XRF	Cd: N.D	N/T
				Cr: N.D	
				Pb: N.D	
				Hg: N.D	
				Br: N.D	
86	86	All	XRF + Chemical	Cd: N.D	Cr ⁶⁺ : N.D(<8.0) Pb: 0.5×10 ³
				Cr: Inconclusive	
				Pb: Inconclusive	
				Hg: N.D	
				Br: N.D	
87	87	All	XRF + Chemical	Cd: N.D	Cr ⁶⁺ : N.D(<8.0)
				Cr: Inconclusive	
				Pb: N.D	
				Hg: N.D	
				Br: N.D	
88	88	All	XRF	Cd: N.D	N/T
				Cr: N.D	
				Pb: N.D	
				Hg: N.D	
				Br: N.D	
89	89	All	XRF	Cd: N.D	N/T
				Cr: N.D	
				Pb: N.D	
				Hg: N.D	
				Br: N.D	

VERIFICATION REPORT

TESTED MATERIAL	SCHEME	TARGET RoHS SUBSTANCES	TEST METHOD USED	XRF RESULT (in mg/kg)	CHEMICAL TEST RESULT (in mg/kg)
90	90	All	XRF	Cd: N.D	N/T
				Cr: N.D	
				Pb: N.D	
				Hg: N.D	
				Br: N.D	
91	91	All	XRF + Chemical	Cd: N.D	Pb: See remark
				Cr: N.D	
				Pb: Inconclusive	
				Hg: N.D	
				Br: N.D	
92	92	All	XRF	Cd: N.D	N/T
				Cr: N.D	
				Pb: N.D	
				Hg: N.D	
				Br: N.D	
93	93	All	XRF	Cd: N.D	N/T
				Cr: N.D	
				Pb: N.D	
				Hg: N.D	
				Br: N.D	
94	94	All	XRF + Chemical	Cd: N.D	PBBs: N.D(<5.0) PBDEs: N.D(<5.0)
				Cr: N.D	
				Pb: N.D	
				Hg: N.D	
				Br: Inconclusive	
95	95	All	XRF	Cd: N.D	N/T
				Cr: N.D	
				Pb: N.D	
				Hg: N.D	
				Br: N.D	
96	96	All	XRF + Chemical	Cd: N.D	Cr ⁶⁺ : Negative
				Cr: Inconclusive	
				Pb: N.D	
				Hg: N.D	
				Br: N.D	
97	97	All	XRF + Chemical	Cd: N.D	Cr ⁶⁺ : Negative
				Cr: Inconclusive	
				Pb: N.D	
				Hg: N.D	
				Br: N.D	
98	98	All	XRF + Chemical	Cd: N.D	Cr ⁶⁺ : Negative
				Cr: Inconclusive	
				Pb: N.D	
				Hg: N.D	
				Br: N.D	

VERIFICATION REPORT

TESTED MATERIAL	SCHEME	TARGET RoHS SUBSTANCES	TEST METHOD USED	XRF RESULT (in mg/kg)	CHEMICAL TEST RESULT (in mg/kg)
99	99	All	XRF + Chemical	Cd: N.D	Cr ⁶⁺ : Negative
				Cr: Inconclusive	
				Pb: N.D	
				Hg: N.D	
				Br: N.D	
100	100	All	XRF + Chemical	Cd: N.D	Cr ⁶⁺ : Negative
				Cr: Inconclusive	
				Pb: N.D	
				Hg: N.D	
				Br: N.D	
101	101	All	XRF	Cd: N.D	N/T
				Cr: N.D	
				Pb: N.D	
				Hg: N.D	
				Br: N.D	
102	102	All	XRF + Chemical	Cd: N.D	PBBs: N.D(<5.0) PBDEs: N.D(<5.0)
				Cr: N.D	
				Pb: N.D	
				Hg: N.D	
				Br: Inconclusive	
103	103	All	XRF	Cd: N.D	N/T
				Cr: N.D	
				Pb: N.D	
				Hg: N.D	
				Br: N.D	
104	104	All	XRF + Chemical	Cd: N.D	Pb: See remark
				Cr: N.D	
				Pb: Inconclusive	
				Hg: N.D	
				Br: N.D	
105	105	All	XRF	Cd: N.D	N/T
				Cr: N.D	
				Pb: N.D	
				Hg: N.D	
				Br: N.D	
106	106	All	XRF + Chemical	Cd: N.D	PBBs: N.D(<5.0) PBDEs: N.D(<5.0)
				Cr: N.D	
				Pb: N.D	
				Hg: N.D	
				Br: Inconclusive	
107	107	All	XRF	Cd: N.D	N/T
				Cr: N.D	
				Pb: N.D	
				Hg: N.D	
				Br: N.D	

VERIFICATION REPORT

TESTED MATERIAL	SCHEME	TARGET RoHS SUBSTANCES	TEST METHOD USED	XRF RESULT (in mg/kg)	CHEMICAL TEST RESULT (in mg/kg)
108	108	All	XRF	Cd: N.D	N/T
				Cr: N.D	
				Pb: N.D	
				Hg: N.D	
				Br: N.D	
109	109	All	XRF	Cd: N.D	N/T
				Cr: N.D	
				Pb: N.D	
				Hg: N.D	
				Br: N.D	
110	110	All	XRF	Cd: N.D	N/T
				Cr: N.D	
				Pb: N.D	
				Hg: N.D	
				Br: N.D	
111	111	All	XRF	Cd: N.D	N/T
				Cr: N.D	
				Pb: N.D	
				Hg: N.D	
				Br: N.D	
112	112	All	XRF	Cd: N.D	N/T
				Cr: N.D	
				Pb: N.D	
				Hg: N.D	
				Br: N.D	
113	113	All	XRF + Chemical	Cd: N.D	Cr ⁶⁺ : N.D(<8.0)
				Cr: Inconclusive	
				Pb: N.D	
				Hg: N.D	
				Br: N.D	
114	114	All	XRF	Cd: N.D	N/T
				Cr: N.D	
				Pb: N.D	
				Hg: N.D	
				Br: N.D	
115	115	All	XRF + Chemical	Cd: N.D	Pb: N.D(<2.0)
				Cr: N.D	
				Pb: Inconclusive	
				Hg: N.D	
				Br: N.D	
116	116	All	XRF	Cd: N.D	N/T
				Cr: N.D	
				Pb: N.D	
				Hg: N.D	
				Br: N.D	

VERIFICATION REPORT

TESTED MATERIAL	SCHEME	TARGET RoHS SUBSTANCES	TEST METHOD USED	XRF RESULT (in mg/kg)	CHEMICAL TEST RESULT (in mg/kg)
117	117	All	XRF	Cd: N.D	N/T
				Cr: N.D	
				Pb: N.D	
				Hg: N.D	
				Br: N.D	
118	118	All	XRF	Cd: N.D	N/T
				Cr: N.D	
				Pb: N.D	
				Hg: N.D	
				Br: N.D	
119	119	All	XRF	Cd: N.D	N/T
				Cr: N.D	
				Pb: N.D	
				Hg: N.D	
				Br: N.D	
120	120	All	XRF	Cd: N.D	N/T
				Cr: N.D	
				Pb: N.D	
				Hg: N.D	
				Br: N.D	
121	121	All	XRF + Chemical	Cd: N.D	Cr ⁶⁺ : Negative
				Cr: Inconclusive	
				Pb: N.D	
				Hg: N.D	
				Br: N.D	
122	122	All	XRF	Cd: N.D	N/T
				Cr: N.D	
				Pb: N.D	
				Hg: N.D	
				Br: N.D	
123	123	All	XRF	Cd: N.D	N/T
				Cr: N.D	
				Pb: N.D	
				Hg: N.D	
				Br: N.D	
124	124	All	XRF	Cd: N.D	N/T
				Cr: N.D	
				Pb: N.D	
				Hg: N.D	
				Br: N.D	
125	125	All	XRF	Cd: N.D	N/T
				Cr: N.D	
				Pb: N.D	
				Hg: N.D	
				Br: N.D	

VERIFICATION REPORT

TESTED MATERIAL	SCHEME	TARGET RoHS SUBSTANCES	TEST METHOD USED	XRF RESULT (in mg/kg)	CHEMICAL TEST RESULT (in mg/kg)
126	126	All	XRF	Cd: N.D	N/T
				Cr: N.D	
				Pb: N.D	
				Hg: N.D	
				Br: N.D	
127	127	All	XRF	Cd: N.D	N/T
				Cr: N.D	
				Pb: N.D	
				Hg: N.D	
				Br: N.D	
128	128	All	XRF	Cd: N.D	N/T
				Cr: N.D	
				Pb: N.D	
				Hg: N.D	
				Br: N.D	
129	129	All	XRF	Cd: N.D	N/T
				Cr: N.D	
				Pb: N.D	
				Hg: N.D	
				Br: N.D	
130	130	All	XRF	Cd: N.D	N/T
				Cr: N.D	
				Pb: N.D	
				Hg: N.D	
				Br: N.D	
131	131	All	XRF	Cd: N.D	N/T
				Cr: N.D	
				Pb: N.D	
				Hg: N.D	
				Br: N.D	
132	132	All	XRF	Cd: N.D	N/T
				Cr: N.D	
				Pb: N.D	
				Hg: N.D	
				Br: N.D	
133	133	All	XRF	Cd: N.D	N/T
				Cr: N.D	
				Pb: N.D	
				Hg: N.D	
				Br: N.D	
134	134	All	XRF	Cd: N.D	N/T
				Cr: N.D	
				Pb: N.D	
				Hg: N.D	
				Br: N.D	

VERIFICATION REPORT

TESTED MATERIAL	SCHEME	TARGET RoHS SUBSTANCES	TEST METHOD USED	XRF RESULT (in mg/kg)	CHEMICAL TEST RESULT (in mg/kg)
135	135	All	XRF	Cd: N.D	N/T
				Cr: N.D	
				Pb: N.D	
				Hg: N.D	
				Br: N.D	
136	136	All	XRF	Cd: N.D	N/T
				Cr: N.D	
				Pb: N.D	
				Hg: N.D	
				Br: N.D	
137	137	All	XRF	Cd: N.D	N/T
				Cr: N.D	
				Pb: N.D	
				Hg: N.D	
				Br: N.D	
138	138	All	XRF	Cd: N.D	N/T
				Cr: N.D	
				Pb: N.D	
				Hg: N.D	
				Br: N.D	
139	139	All	XRF	Cd: N.D	N/T
				Cr: N.D	
				Pb: N.D	
				Hg: N.D	
				Br: N.D	
140	140	All	XRF	Cd: N.D	N/T
				Cr: N.D	
				Pb: N.D	
				Hg: N.D	
				Br: N.D	
141	141	All	XRF	Cd: N.D	N/T
				Cr: N.D	
				Pb: N.D	
				Hg: N.D	
				Br: N.D	
142	142	All	XRF	Cd: N.D	N/T
				Cr: N.D	
				Pb: N.D	
				Hg: N.D	
				Br: N.D	
143	143	All	XRF	Cd: N.D	N/T
				Cr: N.D	
				Pb: N.D	
				Hg: N.D	
				Br: N.D	

VERIFICATION REPORT

TESTED MATERIAL	SCHEME	TARGET RoHS SUBSTANCES	TEST METHOD USED	XRF RESULT (in mg/kg)	CHEMICAL TEST RESULT (in mg/kg)
144	144	All	XRF	Cd: N.D	N/T
				Cr: N.D	
				Pb: N.D	
				Hg: N.D	
				Br: N.D	
145	145	All	XRF	Cd: N.D	N/T
				Cr: N.D	
				Pb: N.D	
				Hg: N.D	
				Br: N.D	
146	146	All	XRF	Cd: N.D	N/T
				Cr: N.D	
				Pb: N.D	
				Hg: N.D	
				Br: N.D	
147	147	All	XRF	Cd: N.D	N/T
				Cr: N.D	
				Pb: N.D	
				Hg: N.D	
				Br: N.D	
148	148	All	XRF + Chemical	Cd: N.D	PBBs: N.D(<5.0) PBDEs: N.D(<5.0)
				Cr: N.D	
				Pb: N.D	
				Hg: N.D	
				Br: Inconclusive	
149	149	All	XRF	Cd: N.D	N/T
				Cr: N.D	
				Pb: N.D	
				Hg: N.D	
				Br: N.D	
150	150	All	XRF	Cd: N.D	N/T
				Cr: N.D	
				Pb: N.D	
				Hg: N.D	
				Br: N.D	
151	151	All	XRF	Cd: N.D	N/T
				Cr: N.D	
				Pb: N.D	
				Hg: N.D	
				Br: N.D	
152	152	All	XRF + Chemical	Cd: N.D	Pb: See remark
				Cr: N.D	
				Pb: Inconclusive	
				Hg: N.D	
				Br: N.D	

VERIFICATION REPORT

TESTED MATERIAL	SCHEME	TARGET RoHS SUBSTANCES	TEST METHOD USED	XRF RESULT (in mg/kg)	CHEMICAL TEST RESULT (in mg/kg)
153	153	All	XRF + Chemical	Cd: N.D	Cr ⁶⁺ : Negative
				Cr: Inconclusive	
				Pb: N.D	
				Hg: N.D	
				Br: N.D	
154	154	All	XRF + Chemical	Cd: N.D	Cr ⁶⁺ : Negative
				Cr: Inconclusive	
				Pb: N.D	
				Hg: N.D	
				Br: N.D	
155	155	All	XRF + Chemical	Cd: N.D	Cr ⁶⁺ : Negative
				Cr: Inconclusive	
				Pb: N.D	
				Hg: N.D	
				Br: N.D	
156	156	All	XRF + Chemical	Cd: N.D	Cr ⁶⁺ : Negative
				Cr: Inconclusive	
				Pb: N.D	
				Hg: N.D	
				Br: N.D	
157	157	All	XRF	Cd: N.D	N/T
				Cr: N.D	
				Pb: N.D	
				Hg: N.D	
				Br: N.D	

Remark: in the following pages in this report:

- RL = Reporting Limits
- N.D = Not Detected (<RL)
- MDL = Method Detection Limit
- Mg/kg = parts per million = ppm
- N/T = Not tested
- Negative = Absence of Cr⁶⁺ coating

VERIFICATION REPORT

- As claimed by the information submitted by the supplier of applicant.
- The lead content of component (91) is coming from a glass or ceramic other than dielectric ceramic in capacitors, e.g. piezoelectronic devices, or in a glass or ceramic matrix compound in electrical and electronic components. According to EU RoHS recast directive (2011/65/EU), electrical and electronic components containing lead in a glass or ceramic other than dielectric ceramic in capacitors, e.g. piezoelectronic devices, or in a glass or ceramic matrix compound can be exempted.
- Component (104) was detected to contain 3.7% lead from the Copper alloy only. According to EU RoHS recast directive (2011/65/EU), lead as an alloying element in copper alloy can be containing up to 4% lead by weight.
- Component (152) was detected to contain 2.6% lead from the Copper alloy only. According to EU RoHS recast directive (2011/65/EU), lead as an alloying element in copper alloy can be containing up to 4% lead by weight.

VERIFICATION REPORT

(2) To determine Bis(2-ethylhexyl) phthalate (DEHP), Butyl benzyl phthalate(BBP), Dibutyl phthalate(DBP), Diisobutyl phthalate(DIBP):

Tested Item(s)	Content (mg/kg)					RL
	4	5	9	21	23	
Bis(2-ethylhexyl) phthalate (DEHP)	N.D	N.D	N.D	N.D	N.D	150.0
Butyl benzyl phthalate(BBP)	N.D	N.D	N.D	N.D	N.D	150.0
Dibutyl phthalate(DBP)	N.D	N.D	N.D	N.D	N.D	150.0
Diisobutyl phthalate(DIBP)	N.D	N.D	N.D	N.D	N.D	150.0

Tested Item(s)	Content (mg/kg)					RL
	25	27	28	34	38	
Bis(2-ethylhexyl) phthalate (DEHP)	N.D	N.D	N.D	N.D	N.D	150.0
Butyl benzyl phthalate(BBP)	N.D	N.D	N.D	N.D	N.D	150.0
Dibutyl phthalate(DBP)	N.D	N.D	N.D	N.D	N.D	150.0
Diisobutyl phthalate(DIBP)	N.D	N.D	N.D	N.D	N.D	150.0

Tested Item(s)	Content (mg/kg)					RL
	46	47	54	56	70	
Bis(2-ethylhexyl) phthalate (DEHP)	N.D	N.D	N.D	N.D	N.D	150.0
Butyl benzyl phthalate(BBP)	N.D	N.D	N.D	N.D	N.D	150.0
Dibutyl phthalate(DBP)	N.D	N.D	N.D	N.D	N.D	150.0
Diisobutyl phthalate(DIBP)	N.D	N.D	N.D	N.D	N.D	150.0

Tested Item(s)	Content (mg/kg)					RL
	72	74	75	76	77	
Bis(2-ethylhexyl) phthalate (DEHP)	N.D	N.D	N.D	N.D	N.D	150.0
Butyl benzyl phthalate(BBP)	N.D	N.D	N.D	N.D	N.D	150.0
Dibutyl phthalate(DBP)	N.D	N.D	N.D	N.D	N.D	150.0
Diisobutyl phthalate(DIBP)	N.D	N.D	N.D	N.D	N.D	150.0

VERIFICATION REPORT

Tested Item(s)	Content (mg/kg)					RL
	81	82	83	84	94	
Bis(2-ethylhexyl) phthalate (DEHP)	N.D	N.D	N.D	N.D	N.D	150.0
Butyl benzyl phthalate(BBP)	N.D	N.D	N.D	N.D	N.D	150.0
Dibutyl phthalate(DBP)	N.D	N.D	N.D	N.D	N.D	150.0
Diisobutyl phthalate(DIBP)	N.D	N.D	N.D	N.D	N.D	150.0

Tested Item(s)	Content (mg/kg)					RL
	102	106	110	111	123	
Bis(2-ethylhexyl) phthalate (DEHP)	N.D	N.D	N.D	N.D	N.D	150.0
Butyl benzyl phthalate(BBP)	N.D	N.D	N.D	N.D	N.D	150.0
Dibutyl phthalate(DBP)	N.D	N.D	N.D	N.D	N.D	150.0
Diisobutyl phthalate(DIBP)	N.D	N.D	N.D	N.D	N.D	150.0

Tested Item(s)	Content (mg/kg)					RL
	131	132	137	138	148	
Bis(2-ethylhexyl) phthalate (DEHP)	N.D	N.D	N.D	N.D	N.D	150.0
Butyl benzyl phthalate(BBP)	N.D	N.D	N.D	N.D	N.D	150.0
Dibutyl phthalate(DBP)	N.D	N.D	N.D	N.D	N.D	150.0
Diisobutyl phthalate(DIBP)	N.D	N.D	N.D	N.D	N.D	150.0

Remark: in the following pages in this report:

- RL = Reporting Limits
- MDL = Method Detection Limit
- N.D = Not Detected (<RL)
- Mg/kg = parts per million = ppm
- N/T = Not tested

VERIFICATION REPORT

TEST METHODS:

- (1) Sample prepared with reference to IEC 62321-2:2013 Determination of certain substances in electrotechnical products – Part 2: Disassembly, disjunction and mechanical sample preparation;
- (2) Sample Screening testing with reference to IEC 62321-3-1:2013 Determination of certain substances in electrotechnical products – Part 3-1: Screening – Lead, mercury, Cadmium, total chromium and total bromine using X-ray fluorescence spectrometry;
 - (a) It is the result on total Br while test item on restricted substances is PBBs/PBDEs. It is the result on total Cr while test item on restricted substances is Cr⁶⁺.
 - (b) Results are obtained by XRF for primary screening, and further chemical testing by ICP-OES(for Cd, Pb, Hg), UV-Vis(for Cr⁶⁺) and GC/MS(for PBBs, PBDEs) is recommended to be performed.
XRF screening limits in mg/kg for regulated elements according to IEC 62321-3-1:2013

ELEMENT	POLYMER	METALS	COMPOSITE MATERIAL
Cd	BL≤(70-3σ) <X<(130+3σ) ≤OL	BL≤(70-3σ) <X<(130+3σ) ≤OL	LOD < X < (150+3σ) ≤ OL
Pb	BL≤(700-3σ) <X<(1300+3σ) ≤OL	BL≤(700-3σ) <X<(1300+3σ) ≤OL	BL≤(500-3σ) <X<(1500+3σ) ≤OL
Hg	BL≤(700-3σ) <X<(1300+3σ) ≤OL	BL≤(700-3σ) <X<(1300+3σ) ≤OL	BL≤(500-3σ) <X<(1500+3σ) ≤OL
Cr	BL≤(700-3σ) <X	BL≤(700-3σ) <X	BL≤(500-3σ) <X
Br	BL≤(300-3σ) <X	--	BL≤(250-3σ) <X

Note: BL = Below Limit, OL = Over Limit, LOD = Limit of Detection, -- = Not Regulated

The XRF screening test for RoHS elements – The reading may be different to the actual content in the sample be of non-uniformity composition.

(3) Wet Chemical Test Method

TESTING ITEM	CHEMICAL TESTING METHOD	MDL	LIMIT
Cd	With reference to IEC 62321-5:2013, by acid digestion and determined by ICP-OES	2.0mg/kg	100mg/kg
Pb	With reference to IEC 62321-5:2013, by acid digestion and determined by ICP-OES	2.0mg/kg	1000mg/kg
Hg	With reference to IEC 62321-4:2013+A1:2017, by acid digestion and determined by ICP-OES	2.0mg/kg	1000mg/kg
Cr ⁶⁺ (for non metal)	With reference to IEC 62321-7-2:2017, by alkaline digestion and determined by UV-VIS spectrophotometer	8.0mg/kg	1000mg/kg
Cr ⁶⁺ (for metal)	With reference to IEC 62321-7-1:2015 by spot – test	0.1µg/cm ²	1000mg/kg
PBBs Content	With reference to IEC 62321-6:2015, by solvent extraction and determined by GC-MS	5.0mg/kg	1000mg/kg
PBDEs Content	With reference to IEC 62321-6:2015, by solvent extraction and determined by GC-MS	5.0mg/kg	1000mg/kg

Note: According to IEC 62321-7-1:2015, result on Cr⁶⁺ for metal sample is shown as Positive/Negative.

VERIFICATION REPORT

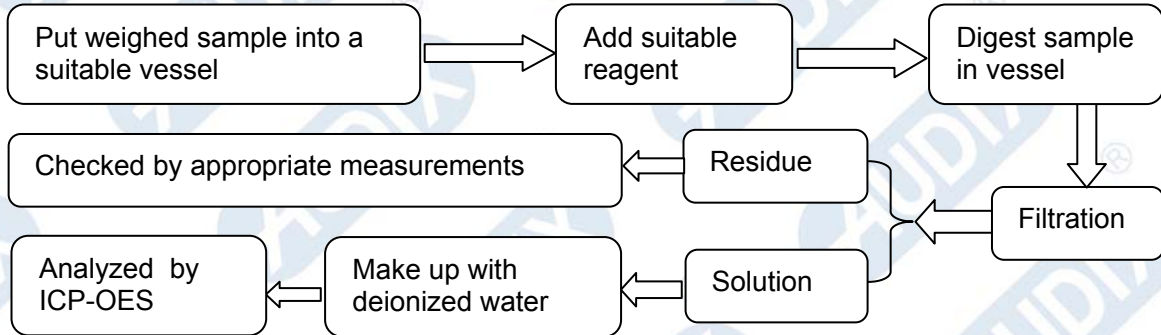
(4) DEHP、BBP、DBP、DIBP Test Method

<u>TESTING ITEM</u>	<u>CHEMICAL TESTING METHOD</u>	<u>MDL</u>	<u>LIMIT</u>
DEHP	With reference to IEC 62321-8:2017, by solvent extraction and determined by GC-MS	50.0mg/kg	1000mg/kg
BBP	With reference to IEC 62321-8:2017, by solvent extraction and determined by GC-MS	50.0mg/kg	1000mg/kg
DBP	With reference to IEC 62321-8:2017, by solvent extraction and determined by GC-MS	50.0mg/kg	1000mg/kg
DIBP	With reference to IEC 62321-8:2017, by solvent extraction and determined by GC-MS	50.0mg/kg	1000mg/kg

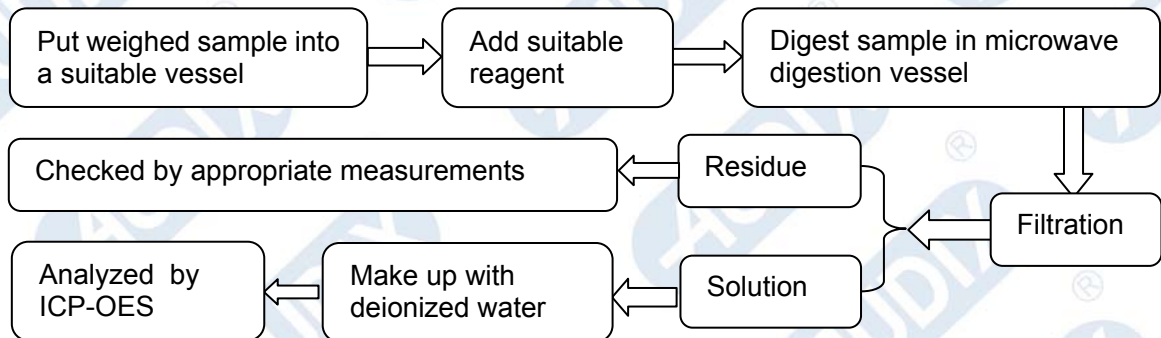
VERIFICATION REPORT

TEST PROCESS

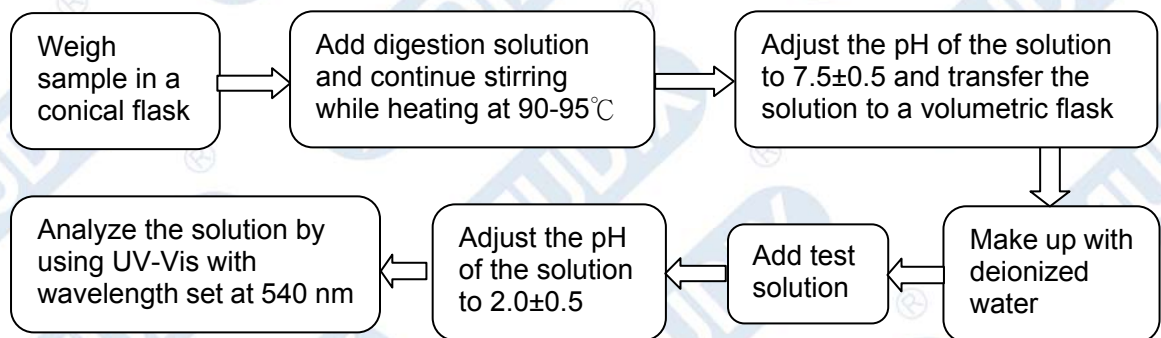
1. Test for Lead (Pb), Cadmium (Cd) contents(IEC 62321-5:2013):



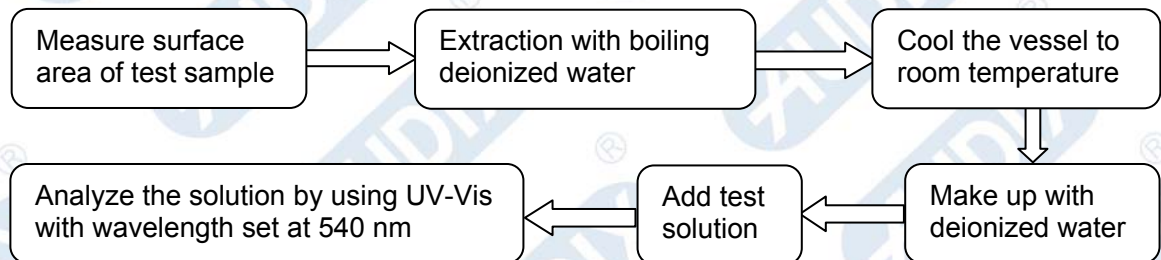
2. Test for Mercury (Hg) contents (IEC 62321-4:2013+A1:2017):



3. Test for Chromium (Cr(VI)) contents (IEC 62321-7-2:2017):

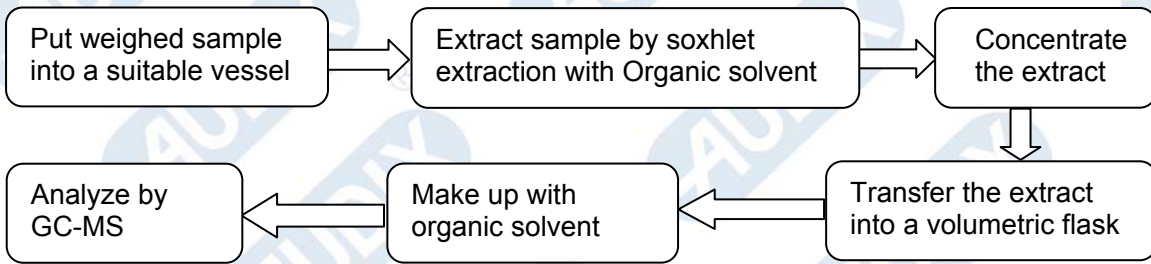


4. Test for Chromium(Cr(VI)) contents (IEC 62321-7-1:2015):

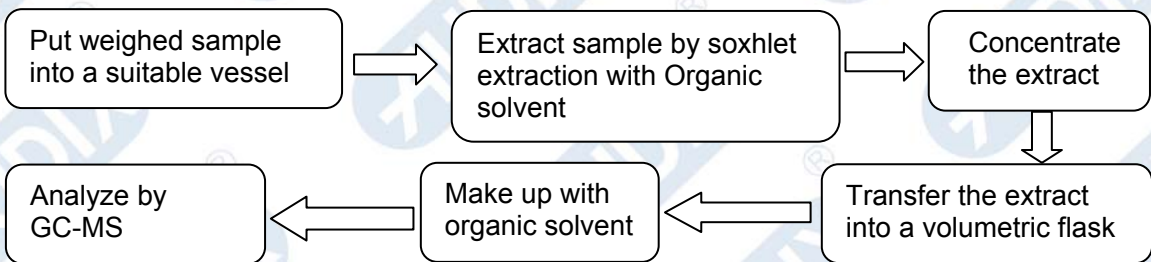


VERIFICATION REPORT

5. Test for PBBs & PBDEs contents (IEC 62321-6:2015):



6. Test for DEHP、DBP、BBP、DIBP contents (IEC 62321-8:2017):



VERIFICATION REPORT

INFORMATION OF TEST SAMPLE

(I) Sample description:

- (1) Silver color metal
- (2) Silver color metal
- (3) Silver color metal
- (4) Black sponge
- (5) Silver color cloth
- (6) Silver color screw
- (7) Silver color screw
- (8) Silver color metal
- (9) Silver color metal
- (10) Silver color metal
- (11) Black ceramic
- (12) Silver color metal
- (13) Black ceramic
- (14) Brown ceramic
- (15) Black ceramic
- (16) Black ceramic
- (17) Gray ceramic with black printing
- (18) Black ceramic
- (19) Beige-yellow plastic
- (20) Silver color metal pin
- (21) Beige-yellow plastic
- (22) Silver color metal pin
- (23) White plastic
- (24) Silver color metal pin
- (25) Black plastic
- (26) Copper color metal pin
- (27) Black plastic
- (28) Black plastic
- (29) Silver color metal
- (30) Silver color metal
- (31) Silver/copper color metal
- (32) Silver color metal
- (33) Silver color metal pin
- (34) Black plastic
- (35) Yellow plastic
- (36) Green plastic
- (37) Silver color metal pin
- (38) Black plastic
- (39) Green plastic
- (40) Red plastic
- (41) Silver color metal pin
- (42) Silver color metal
- (43) Silver color metal pin
- (44) Silver color spring
- (45) Silver/copper color metal pin
- (46) Black plastic
- (47) Black plastic with white printing

VERIFICATION REPORT

- (48) Black ceramic
- (49) Black ceramic
- (50) Red wires
- (51) Silver/copper color metal pin
- (52) Green wires
- (53) Copper color wires
- (54) Black plastic with white printing
- (55) Semi-transparent paper sheet
- (56) Black rubber
- (57) Silver color metal
- (58) Dull silver color metal
- (59) Dull silver color metal
- (60) Silver color metal pin
- (61) Black ceramic
- (62) White plastic
- (63) Black ceramic
- (64) Black ceramic
- (65) Black ceramic
- (66) Brown ceramic
- (67) Black ceramic
- (68) Brown ceramic
- (69) Brown ceramic
- (70) White label with black printing
- (71) Brown ceramic
- (72) Conformal coating with black solder mask & Gold color plated silver color metal pad & Fiberboard
- (73) Soldering tin
- (74) White plastic
- (75) Black plastic
- (76) White label with black printing
- (77) Black plastic
- (78) Silver color metal
- (79) Silver color screw
- (80) Silver color metal pin
- (81) Blue plastic wire jacket
- (82) Yellow plastic wire jacket
- (83) Black plastic wire jacket
- (84) Red plastic wire jacket
- (85) Silver color wires
- (86) White ceramic with black printing
- (87) White ceramic with black printing
- (88) Brown ceramic
- (89) Black ceramic
- (90) Soldering tin
- (91) Black ceramic
- (92) Black ceramic
- (93) White ceramic
- (94) Conformal coating with green solder mask & Gold color plated silver color metal pad & Fiberboard
- (95) Silver color metal
- (96) Silver color metal

VERIFICATION REPORT

- (97) Silver color metal
- (98) Silver color metal
- (99) Silver color spring
- (100) Black treated metal
- (101) Black rubber
- (102) White plastic
- (103) Brown glue
- (104) Copper color metal
- (105) Copper color wires
- (106) Conformal coating with green solder mask & Gold color plated silver color metal pad & Fiberboard
- (107) Soldering tin
- (108) Silver color metal pin
- (109) Silver color wires
- (110) White/orange plastic wire jacket
- (111) White plastic
- (112) Gray ceramic with black printing
- (113) Brown ceramic with white printing
- (114) Yellow ceramic
- (115) Black ceramic
- (116) Silver color metal
- (117) Gray glue
- (118) Copper color metal
- (119) Copper color metal
- (120) Silver color metal
- (121) Silver color screw
- (122) Silver color spring
- (123) Beige-yellow plastic
- (124) Silver color metal pin
- (125) Silver color metal with blue printing
- (126) Dull silver color metal
- (127) Dull silver color metal
- (128) Silver color metal pin
- (129) Yellow adhesive tape
- (130) Semi-transparent paper sheet
- (131) Black rubber
- (132) Black plastic
- (133) Silver color metal with black printing
- (134) Dull silver color metal
- (135) Silver color metal pin
- (136) Brown adhesive tape
- (137) Black rubber
- (138) Black plastic
- (139) Black ceramic
- (140) Black ceramic
- (141) Silver color glass
- (142) Conformal coating with green solder mask & Gold color plated silver color metal pad & Fiberboard
- (143) Brown ceramic
- (144) Brown ceramic
- (145) Black ceramic

VERIFICATION REPORT

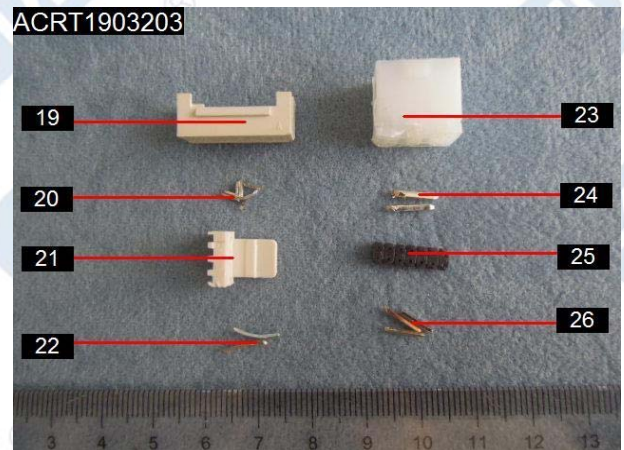
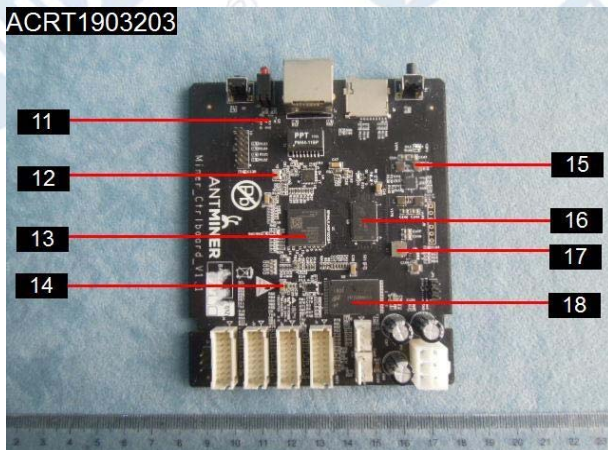
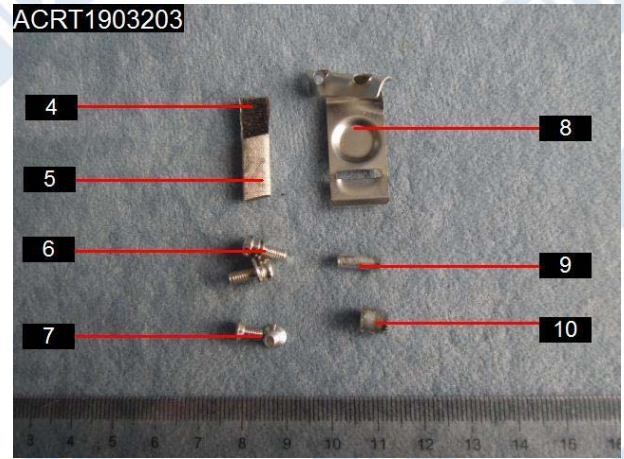
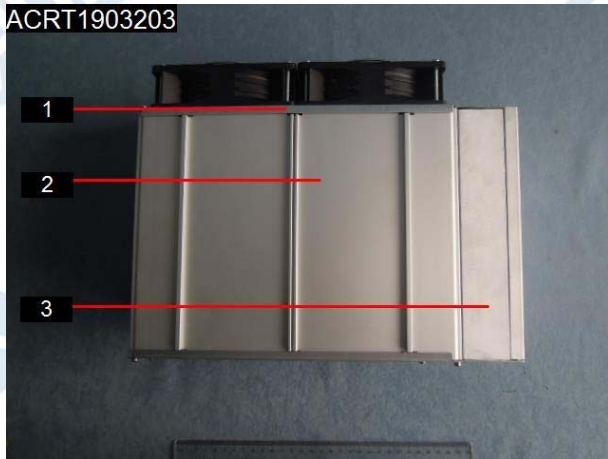
- (146) Black ceramic
- (147) Black ceramic
- (148) Conformal coating with green solder mask & Gold color plated silver color metal pad & Fiberboard
- (149) Brown ceramic
- (150) Brown ceramic
- (151) Brown ceramic
- (152) Silver color metal
- (153) Silver color metal
- (154) Silver color metal
- (155) Silver color metal
- (156) Silver color metal
- (157) Brown plastic

VERIFICATION REPORT

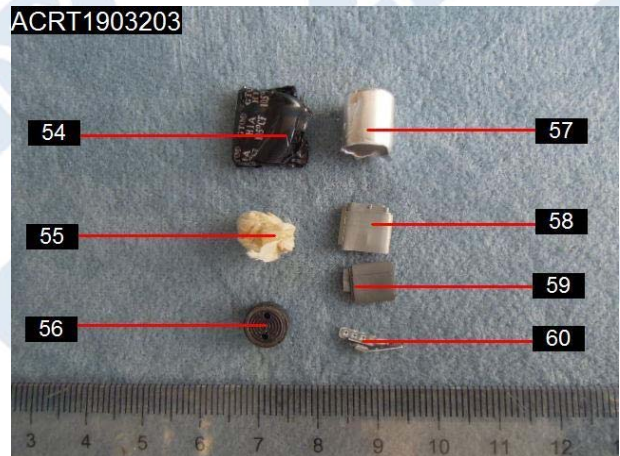
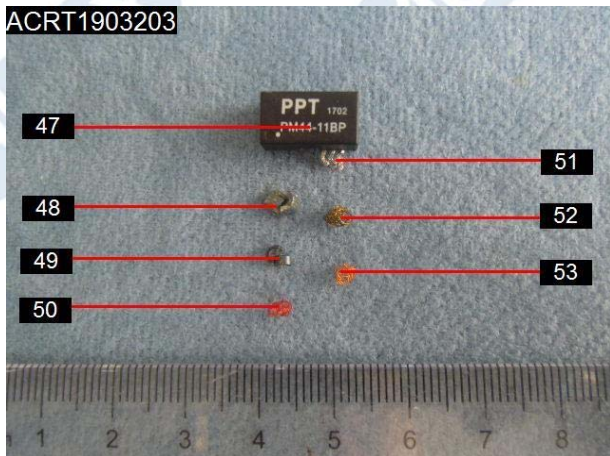
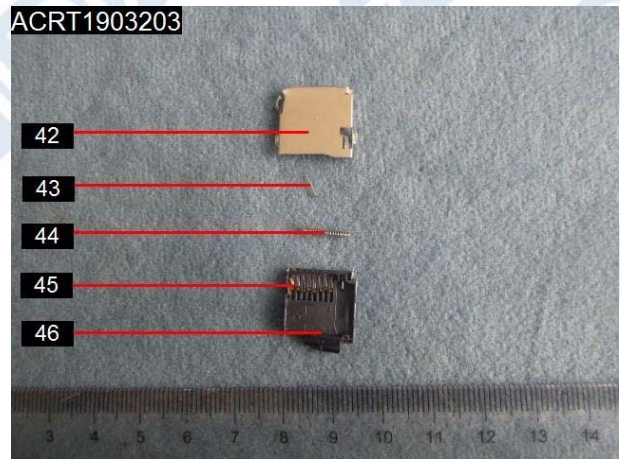
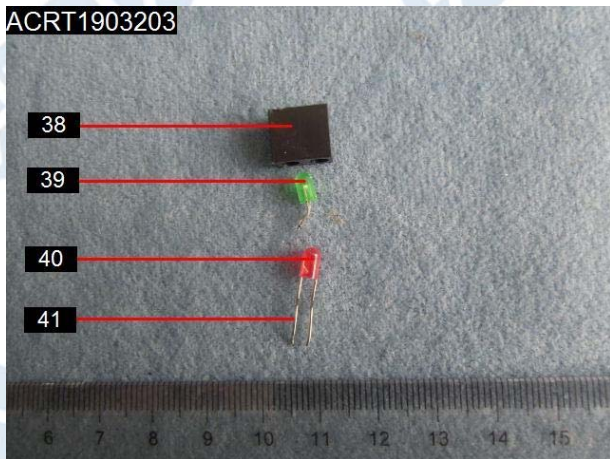
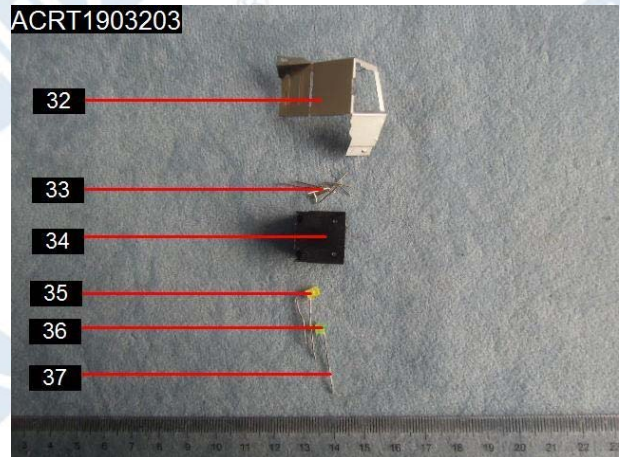
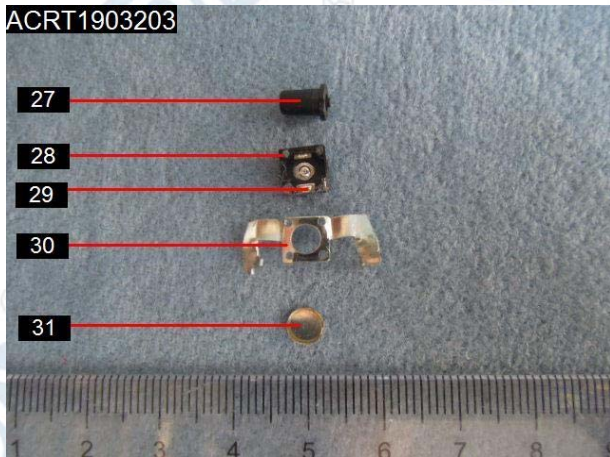
(II) Photo(s) of test sample(s):



(Whole product)

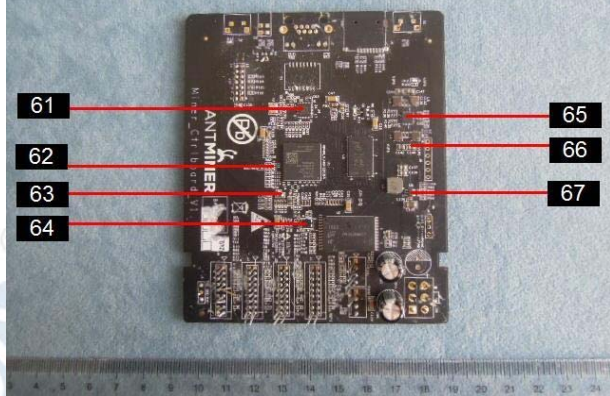


VERIFICATION REPORT

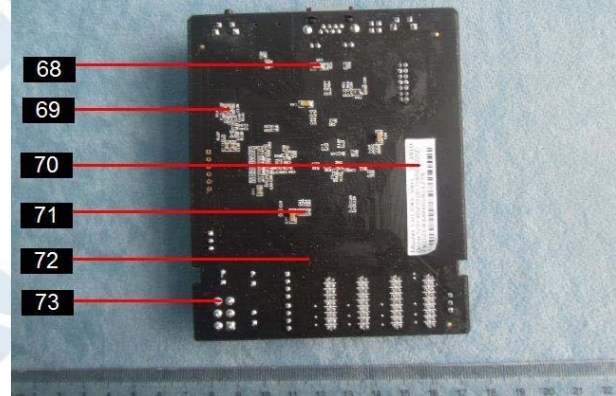


VERIFICATION REPORT

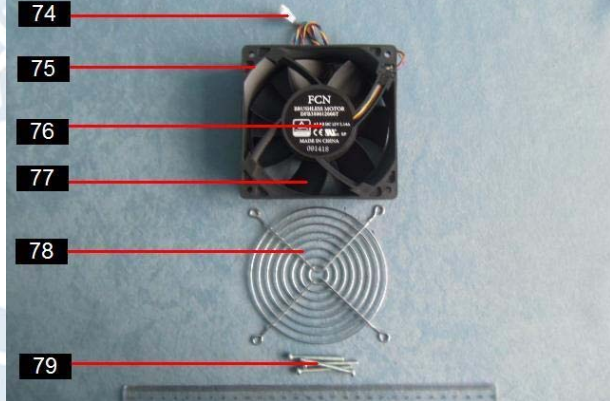
ACRT1903203



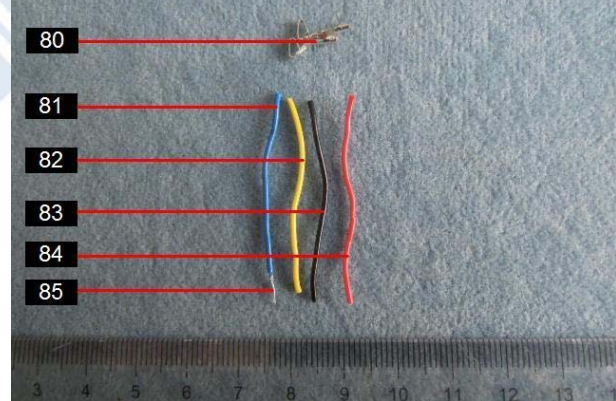
ACRT1903203



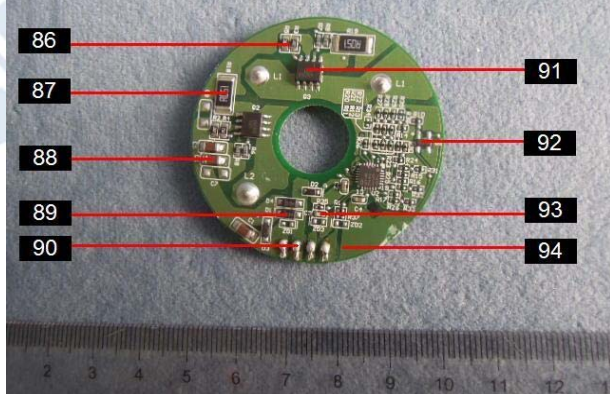
ACRT1903203



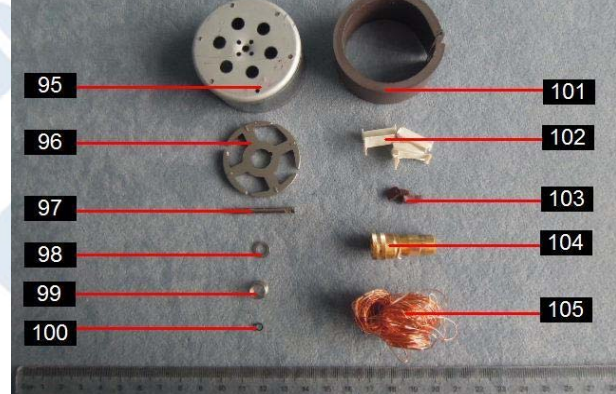
ACRT1903203



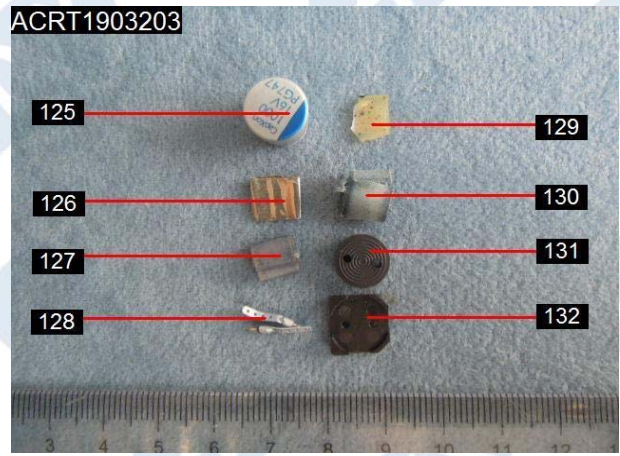
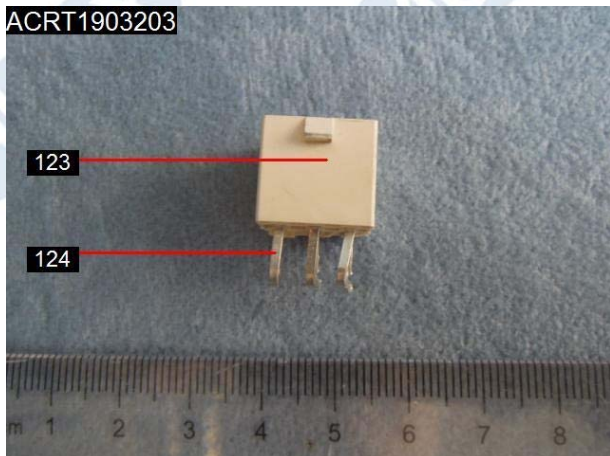
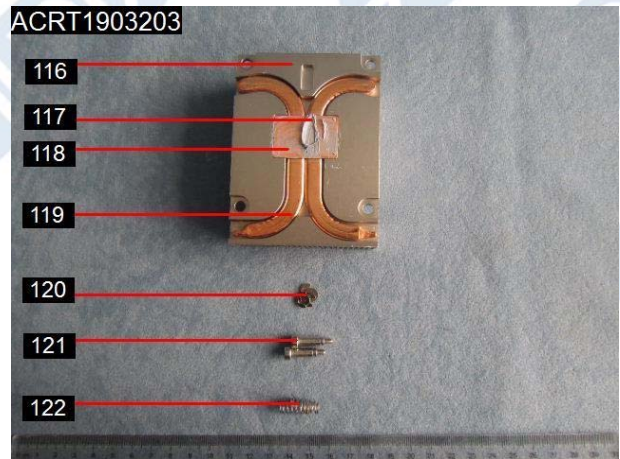
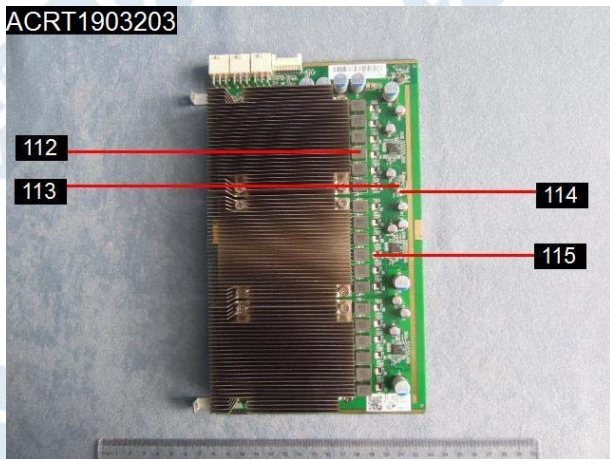
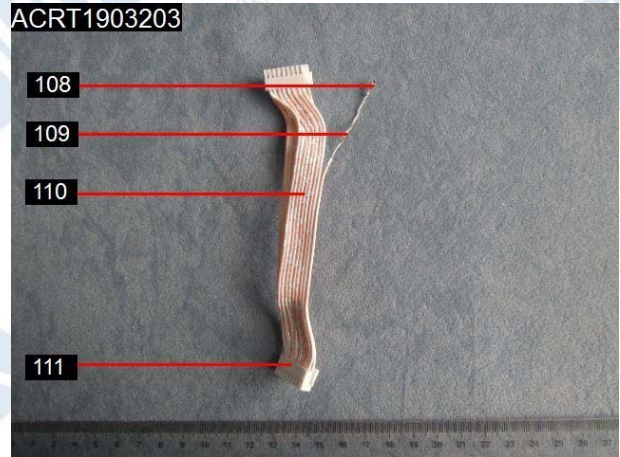
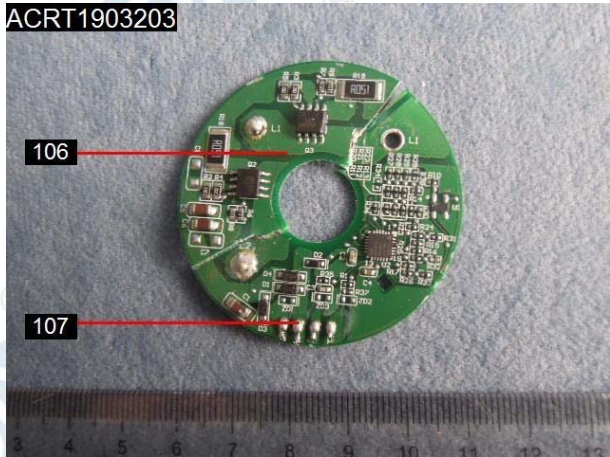
ACRT1903203



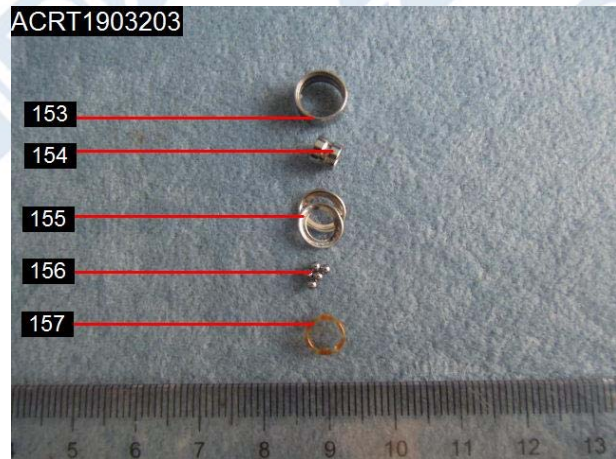
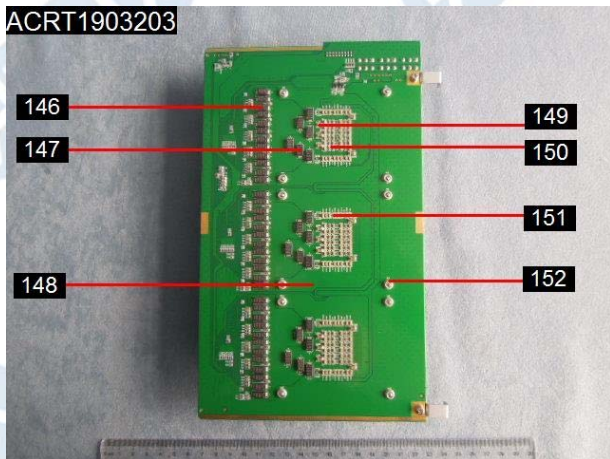
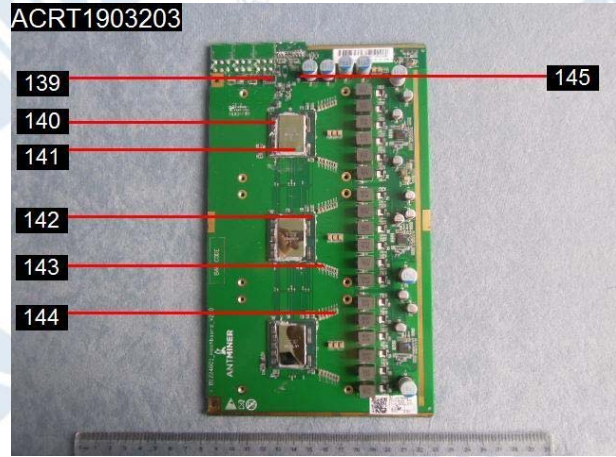
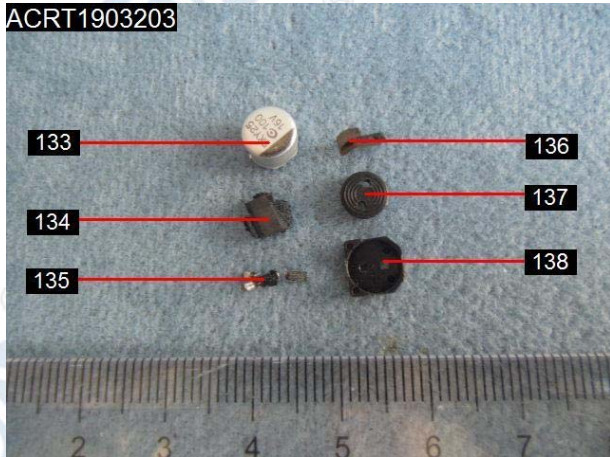
ACRT1903203



VERIFICATION REPORT



VERIFICATION REPORT



*** End of report ***