


VERIFICATION REPORT

Report No. : ACRT1901202
 Applicant : Shenzhen Century Cloud Core Technologies Limited
 Address : F1-F5, B1 Complex Building, Gangtuo Industrial Park, Yabian Community, Shajing Town, Baoan District, Shenzhen

Sample Name : SERVER
 Model No. : APW7-12-1800-A3, APW7-12-1800-A5, APW7-12-1800-A6
 APW7-12-1800-B3, APW7-12-1800-B5, APW7-12-1800-B6
 Date of sample received : Jan. 17, 2019 & Feb. 27, 2019 & Apr. 09, 2019 & Apr. 17, 2019
 Test period : Jan. 17, 2019 to Jan. 30, 2019
 Feb. 27, 2019 to Mar. 08, 2019
 Apr. 09, 2019 to Apr. 16, 2019
 Apr. 17, 2019 to Apr. 23, 2019
 Test request : As specified by client, Split the sample and determine the Lead, Cadmium, Mercury, Hexavalent Chromium, PBBs&PBDEs and Phthalates such as Bis(2-ethylhexyl) phthalate (DEHP), Butyl benzyl phthalate (BBP), Dibutyl phthalate (DBP), Dissobutyl phthalate (DIBP) content in the submitted samples.
 Test Method : Please refer to the following page(s).
 Test result : Please refer to the following page(s).
 Conclusion : When tested as specified, the results shown on the report did not exceed the required limit of EU RoHS Directive 2015/863 amending Annex II to Directive 2011/65/EU.

Written by
(Signature)
 Reviewed by
(Signature)
 Approved by
(Signature/Position)

Technical Manager

Approved date : Apr. 23, 2019

Remark: The test result presented in this report relate only to the sample(s) tested.
 This report is considered invalidated without the Special Seal for Inspection of the testing laboratory. This report shall not be altered, increased or deleted.
 Without the written approval of the issuing testing laboratory, this report shall not be reproduced, duplicated, except in full, and published as advertisement

VERIFICATION REPORT

Test Results (Unit: mg/kg)

(1) To determine Lead, Cadmium, Mercury, Hexavalent Chromium, PBBs&PBDEs:

TESTED MATERIAL	SCHEME	TARGET RoHS SUBSTANCES	TEST METHOD USED	XRF RESULT (in mg/kg)	CHEMICAL TEST RESULT (in mg/kg)
1	1	All	XRF + Chemical	Cd: N.D	Cr ⁶⁺ : Negative
				Cr: Inconclusive	
				Pb: N.D	
				Hg: N.D	
				Br: N.D	
2	2	All	XRF	Cd: N.D	N/T
				Cr: N.D	
				Pb: N.D	
				Hg: N.D	
				Br: N.D	
3	3	All	XRF	Cd: N.D	N/T
				Cr: N.D	
				Pb: N.D	
				Hg: N.D	
				Br: N.D	
4	4	All	XRF	Cd: N.D	N/T
				Cr: N.D	
				Pb: N.D	
				Hg: N.D	
				Br: N.D	
5	5	All	XRF	Cd: N.D	N/T
				Cr: N.D	
				Pb: N.D	
				Hg: N.D	
				Br: N.D	
6	6	All	XRF	Cd: N.D	N/T
				Cr: N.D	
				Pb: N.D	
				Hg: N.D	
				Br: N.D	
7	7	All	XRF	Cd: N.D	N/T
				Cr: N.D	
				Pb: N.D	
				Hg: N.D	
				Br: N.D	
8	8	All	XRF + Chemical	Cd: N.D	Cr ⁶⁺ : Negative
				Cr: Inconclusive	
				Pb: N.D	
				Hg: N.D	
				Br: N.D	

VERIFICATION REPORT

TESTED MATERIAL	SCHEME	TARGET RoHS SUBSTANCES	TEST METHOD USED	XRF RESULT (in mg/kg)	CHEMICAL TEST RESULT (in mg/kg)
9	9	All	XRF	Cd: N.D	N/T
				Cr: N.D	
				Pb: N.D	
				Hg: N.D	
				Br: N.D	
10	10	All	XRF	Cd: N.D	N/T
				Cr: N.D	
				Pb: N.D	
				Hg: N.D	
				Br: N.D	
11	11	All	XRF	Cd: N.D	N/T
				Cr: N.D	
				Pb: N.D	
				Hg: N.D	
				Br: N.D	
12	12	All	XRF	Cd: N.D	N/T
				Cr: N.D	
				Pb: N.D	
				Hg: N.D	
				Br: N.D	
13	13	All	XRF + Chemical	Cd: N.D	Cr ⁶⁺ : N.D(<8.0)
				Cr: Inconclusive	
				Pb: N.D	
				Hg: N.D	
				Br: N.D	
14	14	All	XRF + Chemical	Cd: N.D	PBBs: N.D(<5.0) PBDEs: N.D(<5.0)
				Cr: N.D	
				Pb: N.D	
				Hg: N.D	
				Br: Inconclusive	
15	15	All	XRF	Cd: N.D	N/T
				Cr: N.D	
				Pb: N.D	
				Hg: N.D	
				Br: N.D	
16	16	All	XRF + Chemical	Cd: N.D	Cr ⁶⁺ : Negative
				Cr: Inconclusive	
				Pb: N.D	
				Hg: N.D	
				Br: N.D	
17	17	All	XRF	Cd: N.D	N/T
				Cr: N.D	
				Pb: N.D	
				Hg: N.D	
				Br: N.D	

VERIFICATION REPORT

TESTED MATERIAL	SCHEME	TARGET RoHS SUBSTANCES	TEST METHOD USED	XRF RESULT (in mg/kg)	CHEMICAL TEST RESULT (in mg/kg)
18	18	All	XRF	Cd: N.D	N/T
				Cr: N.D	
				Pb: N.D	
				Hg: N.D	
				Br: N.D	
19	19	All	XRF + Chemical	Cd: N.D	PBBs: N.D(<5.0) PBDEs: N.D(<5.0)
				Cr: N.D	
				Pb: N.D	
				Hg: N.D	
				Br: Inconclusive	
20	20	All	XRF	Cd: N.D	N/T
				Cr: N.D	
				Pb: N.D	
				Hg: N.D	
				Br: N.D	
21	21	All	XRF + Chemical	Cd: N.D	PBBs: N.D(<5.0) PBDEs: N.D(<5.0)
				Cr: N.D	
				Pb: N.D	
				Hg: N.D	
				Br: Inconclusive	
22	22	All	XRF	Cd: N.D	N/T
				Cr: N.D	
				Pb: N.D	
				Hg: N.D	
				Br: N.D	
23	23	All	XRF + Chemical	Cd: N.D	Cr ⁶⁺ : Negative
				Cr: Inconclusive	
				Pb: N.D	
				Hg: N.D	
				Br: N.D	
24	24	All	XRF + Chemical	Cd: N.D	Cr ⁶⁺ : Negative
				Cr: Inconclusive	
				Pb: N.D	
				Hg: N.D	
				Br: N.D	
25	25	All	XRF	Cd: N.D	N/T
				Cr: N.D	
				Pb: N.D	
				Hg: N.D	
				Br: N.D	
26	26	All	XRF + Chemical	Cd: N.D	Cr ⁶⁺ : Negative
				Cr: Inconclusive	
				Pb: N.D	
				Hg: N.D	
				Br: N.D	

VERIFICATION REPORT

TESTED MATERIAL	SCHEME	TARGET RoHS SUBSTANCES	TEST METHOD USED	XRF RESULT (in mg/kg)	CHEMICAL TEST RESULT (in mg/kg)
27	27	All	XRF + Chemical	Cd: N.D	PBBs: N.D(<5.0) PBDEs: N.D(<5.0)
				Cr: N.D	
				Pb: N.D	
				Hg: N.D	
				Br: Inconclusive	
28	28	All	XRF + Chemical	Cd: N.D	PBBs: N.D(<5.0) PBDEs: N.D(<5.0)
				Cr: N.D	
				Pb: N.D	
				Hg: N.D	
				Br: Inconclusive	
29	29	All	XRF	Cd: N.D	N/T
				Cr: N.D	
				Pb: N.D	
				Hg: N.D	
				Br: N.D	
30	30	All	XRF + Chemical	Cd: N.D	PBBs: N.D(<5.0) PBDEs: N.D(<5.0)
				Cr: N.D	
				Pb: N.D	
				Hg: N.D	
				Br: Inconclusive	
31	31	All	XRF + Chemical	Cd: N.D	PBBs: N.D(<5.0) PBDEs: N.D(<5.0)
				Cr: N.D	
				Pb: N.D	
				Hg: N.D	
				Br: Inconclusive	
32	32	All	XRF	Cd: N.D	N/T
				Cr: N.D	
				Pb: N.D	
				Hg: N.D	
				Br: N.D	
33	33	All	XRF + Chemical	Cd: N.D	PBBs: N.D(<5.0) PBDEs: N.D(<5.0)
				Cr: N.D	
				Pb: N.D	
				Hg: N.D	
				Br: Inconclusive	
34	34	All	XRF	Cd: N.D	N/T
				Cr: N.D	
				Pb: N.D	
				Hg: N.D	
				Br: N.D	
35	35	All	XRF + Chemical	Cd: N.D	PBBs: N.D(<5.0) PBDEs: N.D(<5.0)
				Cr: N.D	
				Pb: N.D	
				Hg: N.D	
				Br: Inconclusive	

VERIFICATION REPORT

TESTED MATERIAL	SCHEME	TARGET RoHS SUBSTANCES	TEST METHOD USED	XRF RESULT (in mg/kg)	CHEMICAL TEST RESULT (in mg/kg)
36	36	All	XRF + Chemical	Cd: N.D	PBBs: N.D(<5.0) PBDEs: N.D(<5.0)
				Cr: N.D	
				Pb: N.D	
				Hg: N.D	
				Br: Inconclusive	
37	37	All	XRF	Cd: N.D	N/T
				Cr: N.D	
				Pb: N.D	
				Hg: N.D	
				Br: N.D	
38	38	All	XRF	Cd: N.D	N/T
				Cr: N.D	
				Pb: N.D	
				Hg: N.D	
				Br: N.D	
39	39	All	XRF	Cd: N.D	N/T
				Cr: N.D	
				Pb: N.D	
				Hg: N.D	
				Br: N.D	
40	40	All	XRF	Cd: N.D	N/T
				Cr: N.D	
				Pb: N.D	
				Hg: N.D	
				Br: N.D	
41	41	All	XRF	Cd: N.D	N/T
				Cr: N.D	
				Pb: N.D	
				Hg: N.D	
				Br: N.D	
42	42	All	XRF	Cd: N.D	N/T
				Cr: N.D	
				Pb: N.D	
				Hg: N.D	
				Br: N.D	
43	43	All	XRF + Chemical	Cd: N.D	PBBs: N.D(<5.0) PBDEs: N.D(<5.0)
				Cr: N.D	
				Pb: N.D	
				Hg: N.D	
				Br: Inconclusive	
44	44	All	XRF + Chemical	Cd: N.D	PBBs: N.D(<5.0) PBDEs: N.D(<5.0)
				Cr: N.D	
				Pb: N.D	
				Hg: N.D	
				Br: Inconclusive	

VERIFICATION REPORT

TESTED MATERIAL	SCHEME	TARGET RoHS SUBSTANCES	TEST METHOD USED	XRF RESULT (in mg/kg)	CHEMICAL TEST RESULT (in mg/kg)
45	45	All	XRF + Chemical	Cd: N.D	PBBs: N.D(<5.0) PBDEs: N.D(<5.0)
				Cr: N.D	
				Pb: N.D	
				Hg: N.D	
				Br: Inconclusive	
46	46	All	XRF + Chemical	Cd: N.D	PBBs: N.D(<5.0) PBDEs: N.D(<5.0)
				Cr: N.D	
				Pb: N.D	
				Hg: N.D	
				Br: Inconclusive	
47	47	All	XRF	Cd: N.D	N/T
				Cr: N.D	
				Pb: N.D	
				Hg: N.D	
				Br: N.D	
48	48	All	XRF	Cd: N.D	N/T
				Cr: N.D	
				Pb: N.D	
				Hg: N.D	
				Br: N.D	
49	49	All	XRF	Cd: N.D	N/T
				Cr: N.D	
				Pb: N.D	
				Hg: N.D	
				Br: N.D	
50	50	All	XRF	Cd: N.D	N/T
				Cr: N.D	
				Pb: N.D	
				Hg: N.D	
				Br: N.D	
51	51	All	XRF	Cd:(1.1×10 ⁵)*	N/T
				Cr: N.D	
				Pb: N.D	
				Hg: N.D	
				Br: N.D	
52	52	All	XRF	Cd: N.D	N/T
				Cr: N.D	
				Pb: N.D	
				Hg: N.D	
				Br: N.D	
53	53	All	XRF	Cd: N.D	N/T
				Cr: N.D	
				Pb: N.D	
				Hg: N.D	
				Br: N.D	

VERIFICATION REPORT

TESTED MATERIAL	SCHEME	TARGET RoHS SUBSTANCES	TEST METHOD USED	XRF RESULT (in mg/kg)	CHEMICAL TEST RESULT (in mg/kg)
54	54	All	XRF	Cd: N.D	N/T
				Cr: N.D	
				Pb: N.D	
				Hg: N.D	
				Br: N.D	
55	55	All	XRF + Chemical	Cd: N.D	PBBs: N.D(<5.0) PBDEs: N.D(<5.0)
				Cr: N.D	
				Pb: N.D	
				Hg: N.D	
				Br: Inconclusive	
56	56	All	XRF + Chemical	Cd: N.D	PBBs: N.D(<5.0) PBDEs: N.D(<5.0)
				Cr: N.D	
				Pb: N.D	
				Hg: N.D	
				Br: Inconclusive	
57	57	All	XRF	Cd: N.D	N/T
				Cr: N.D	
				Pb: N.D	
				Hg: N.D	
				Br: N.D	
58	58	All	XRF	Cd: N.D	N/T
				Cr: N.D	
				Pb: N.D	
				Hg: N.D	
				Br: N.D	
59	59	All	XRF	Cd: N.D	N/T
				Cr: N.D	
				Pb: N.D	
				Hg: N.D	
				Br: N.D	
60	60	All	XRF	Cd: N.D	N/T
				Cr: N.D	
				Pb: N.D	
				Hg: N.D	
				Br: N.D	
61	61	All	XRF	Cd: N.D	N/T
				Cr: N.D	
				Pb: N.D	
				Hg: N.D	
				Br: N.D	
62	62	All	XRF	Cd: N.D	N/T
				Cr: N.D	
				Pb: N.D	
				Hg: N.D	
				Br: N.D	

VERIFICATION REPORT

TESTED MATERIAL	SCHEME	TARGET RoHS SUBSTANCES	TEST METHOD USED	XRF RESULT (in mg/kg)	CHEMICAL TEST RESULT (in mg/kg)
63	63	All	XRF	Cd: N.D	N/T
				Cr: N.D	
				Pb: N.D	
				Hg: N.D	
				Br: N.D	
64	64	All	XRF	Cd: N.D	N/T
				Cr: N.D	
				Pb: N.D	
				Hg: N.D	
				Br: N.D	
65	65	All	XRF + Chemical	Cd: N.D	PBBs: N.D(<5.0) PBDEs: N.D(<5.0)
				Cr: N.D	
				Pb: N.D	
				Hg: N.D	
				Br: Inconclusive	
66	66	All	XRF	Cd: N.D	N/T
				Cr: N.D	
				Pb: N.D	
				Hg: N.D	
				Br: N.D	
67	67	All	XRF	Cd: N.D	N/T
				Cr: N.D	
				Pb: N.D	
				Hg: N.D	
				Br: N.D	
68	68	All	XRF	Cd: N.D	N/T
				Cr: N.D	
				Pb: N.D	
				Hg: N.D	
				Br: N.D	
69	69	All	XRF + Chemical	Cd: N.D	PBBs: N.D(<5.0) PBDEs: N.D(<5.0)
				Cr: N.D	
				Pb: N.D	
				Hg: N.D	
				Br: Inconclusive	
70	70	All	XRF	Cd: N.D	N/T
				Cr: N.D	
				Pb: N.D	
				Hg: N.D	
				Br: N.D	
71	71	All	XRF	Cd: N.D	N/T
				Cr: N.D	
				Pb: N.D	
				Hg: N.D	
				Br: N.D	

VERIFICATION REPORT

TESTED MATERIAL	SCHEME	TARGET RoHS SUBSTANCES	TEST METHOD USED	XRF RESULT (in mg/kg)	CHEMICAL TEST RESULT (in mg/kg)
72	72	All	XRF	Cd: N.D	N/T
				Cr: N.D	
				Pb: N.D	
				Hg: N.D	
				Br: N.D	
73	73	All	XRF	Cd: N.D	N/T
				Cr: N.D	
				Pb: N.D	
				Hg: N.D	
				Br: N.D	
74	74	All	XRF	Cd: N.D	N/T
				Cr: N.D	
				Pb: N.D	
				Hg: N.D	
				Br: N.D	
75	75	All	XRF	Cd: N.D	N/T
				Cr: N.D	
				Pb: N.D	
				Hg: N.D	
				Br: N.D	
76	76	All	XRF	Cd: N.D	N/T
				Cr: N.D	
				Pb: N.D	
				Hg: N.D	
				Br: N.D	
77	77	All	XRF	Cd: N.D	N/T
				Cr: N.D	
				Pb: N.D	
				Hg: N.D	
				Br: N.D	
78	78	All	XRF + Chemical	Cd: N.D	Cr ⁶⁺ : N.D(<8.0)
				Cr: Inconclusive	
				Pb: N.D	
				Hg: N.D	
				Br: N.D	
79	79	All	XRF	Cd: N.D	N/T
				Cr: N.D	
				Pb: N.D	
				Hg: N.D	
				Br: N.D	
80	80	All	XRF	Cd: N.D	N/T
				Cr: N.D	
				Pb: N.D	
				Hg: N.D	
				Br: N.D	

VERIFICATION REPORT

TESTED MATERIAL	SCHEME	TARGET RoHS SUBSTANCES	TEST METHOD USED	XRF RESULT (in mg/kg)	CHEMICAL TEST RESULT (in mg/kg)
81	81	All	XRF	Cd: N.D	N/T
				Cr: N.D	
				Pb: N.D	
				Hg: N.D	
				Br: N.D	
82	82	All	XRF	Cd: N.D	N/T
				Cr: N.D	
				Pb: N.D	
				Hg: N.D	
				Br: N.D	
83	83	All	XRF	Cd: N.D	N/T
				Cr: N.D	
				Pb: N.D	
				Hg: N.D	
				Br: N.D	
84	84	All	XRF + Chemical	Cd: N.D	PBBs: N.D(<5.0) PBDEs: N.D(<5.0)
				Cr: N.D	
				Pb: N.D	
				Hg: N.D	
				Br: Inconclusive	
85	85	All	XRF + Chemical	Cd: N.D	PBBs: N.D(<5.0) PBDEs: N.D(<5.0)
				Cr: N.D	
				Pb: N.D	
				Hg: N.D	
				Br: Inconclusive	
86	86	All	XRF	Cd: N.D	N/T
				Cr: N.D	
				Pb: N.D	
				Hg: N.D	
				Br: N.D	
87	87	All	XRF	Cd: N.D	N/T
				Cr: N.D	
				Pb: N.D	
				Hg: N.D	
				Br: N.D	
88	88	All	XRF	Cd: N.D	N/T
				Cr: N.D	
				Pb: N.D	
				Hg: N.D	
				Br: N.D	
89	89	All	XRF	Cd: N.D	N/T
				Cr: N.D	
				Pb: N.D	
				Hg: N.D	
				Br: N.D	

VERIFICATION REPORT

TESTED MATERIAL	SCHEME	TARGET RoHS SUBSTANCES	TEST METHOD USED	XRF RESULT (in mg/kg)	CHEMICAL TEST RESULT (in mg/kg)
90	90	All	XRF + Chemical	Cd: N.D	PBBs: N.D(<5.0) PBDEs: N.D(<5.0)
				Cr: N.D	
				Pb: N.D	
				Hg: N.D	
				Br: Inconclusive	
91	91	All	XRF + Chemical	Cd: N.D	PBBs: N.D(<5.0) PBDEs: N.D(<5.0)
				Cr: N.D	
				Pb: N.D	
				Hg: N.D	
				Br: Inconclusive	
92	92	All	XRF	Cd: N.D	N/T
				Cr: N.D	
				Pb: N.D	
				Hg: N.D	
				Br: N.D	
93	93	All	XRF	Cd: N.D	N/T
				Cr: N.D	
				Pb: N.D	
				Hg: N.D	
				Br: N.D	
94	94	All	XRF	Cd: N.D	N/T
				Cr: N.D	
				Pb: N.D	
				Hg: N.D	
				Br: N.D	
95	95	All	XRF + Chemical	Cd: N.D	PBBs: N.D(<5.0) PBDEs: N.D(<5.0)
				Cr: N.D	
				Pb: N.D	
				Hg: N.D	
				Br: Inconclusive	
96	96	All	XRF	Cd: N.D	N/T
				Cr: N.D	
				Pb: N.D	
				Hg: N.D	
				Br: N.D	
97	97	All	XRF	Cd: N.D	N/T
				Cr: N.D	
				Pb: N.D	
				Hg: N.D	
				Br: N.D	
98	98	All	XRF	Cd: N.D	N/T
				Cr: N.D	
				Pb: N.D	
				Hg: N.D	
				Br: N.D	

VERIFICATION REPORT

TESTED MATERIAL	SCHEME	TARGET RoHS SUBSTANCES	TEST METHOD USED	XRF RESULT (in mg/kg)	CHEMICAL TEST RESULT (in mg/kg)
99	99	All	XRF	Cd: N.D	N/T
				Cr: N.D	
				Pb: N.D	
				Hg: N.D	
				Br: N.D	
100	100	All	XRF	Cd: N.D	N/T
				Cr: N.D	
				Pb: N.D	
				Hg: N.D	
				Br: N.D	
101	101	All	XRF	Cd: N.D	N/T
				Cr: N.D	
				Pb: N.D	
				Hg: N.D	
				Br: N.D	
102	102	All	XRF	Cd: N.D	N/T
				Cr: N.D	
				Pb: N.D	
				Hg: N.D	
				Br: N.D	
103	103	All	XRF	Cd: N.D	N/T
				Cr: N.D	
				Pb: N.D	
				Hg: N.D	
				Br: N.D	
104	104	All	XRF	Cd: N.D	N/T
				Cr: N.D	
				Pb: N.D	
				Hg: N.D	
				Br: N.D	
105	105	All	XRF	Cd: N.D	N/T
				Cr: N.D	
				Pb: N.D	
				Hg: N.D	
				Br: N.D	
106	106	All	XRF	Cd: N.D	N/T
				Cr: N.D	
				Pb: N.D	
				Hg: N.D	
				Br: N.D	
107	107	All	XRF	Cd: N.D	N/T
				Cr: N.D	
				Pb: N.D	
				Hg: N.D	
				Br: N.D	

VERIFICATION REPORT

TESTED MATERIAL	SCHEME	TARGET RoHS SUBSTANCES	TEST METHOD USED	XRF RESULT (in mg/kg)	CHEMICAL TEST RESULT (in mg/kg)
108	108	All	XRF	Cd: N.D	N/T
				Cr: N.D	
				Pb: N.D	
				Hg: N.D	
				Br: N.D	
109	109	All	XRF	Cd: N.D	N/T
				Cr: N.D	
				Pb: N.D	
				Hg: N.D	
				Br: N.D	
110	110	All	XRF	Cd: N.D	N/T
				Cr: N.D	
				Pb: N.D	
				Hg: N.D	
				Br: N.D	
111	111	All	XRF	Cd: N.D	N/T
				Cr: N.D	
				Pb: N.D	
				Hg: N.D	
				Br: N.D	
112	112	All	XRF	Cd: N.D	N/T
				Cr: N.D	
				Pb: N.D	
				Hg: N.D	
				Br: N.D	
113	113	All	XRF	Cd: N.D	N/T
				Cr: N.D	
				Pb: N.D	
				Hg: N.D	
				Br: N.D	
114	114	All	XRF	Cd: N.D	N/T
				Cr: N.D	
				Pb: N.D	
				Hg: N.D	
				Br: N.D	
115	115	All	XRF	Cd: N.D	N/T
				Cr: N.D	
				Pb: N.D	
				Hg: N.D	
				Br: N.D	
116	116	All	XRF	Cd: N.D	N/T
				Cr: N.D	
				Pb: N.D	
				Hg: N.D	
				Br: N.D	

VERIFICATION REPORT

TESTED MATERIAL	SCHEME	TARGET RoHS SUBSTANCES	TEST METHOD USED	XRF RESULT (in mg/kg)	CHEMICAL TEST RESULT (in mg/kg)
117	117	All	XRF	Cd: N.D	N/T
				Cr: N.D	
				Pb: N.D	
				Hg: N.D	
				Br: N.D	
118	118	All	XRF	Cd: N.D	N/T
				Cr: N.D	
				Pb: N.D	
				Hg: N.D	
				Br: N.D	
119	119	All	XRF	Cd: N.D	N/T
				Cr: N.D	
				Pb: N.D	
				Hg: N.D	
				Br: N.D	
120	120	All	XRF	Cd: N.D	N/T
				Cr: N.D	
				Pb: N.D	
				Hg: N.D	
				Br: N.D	
121	121	All	XRF	Cd: N.D	N/T
				Cr: N.D	
				Pb: N.D	
				Hg: N.D	
				Br: N.D	
122	122	All	XRF	Cd: N.D	N/T
				Cr: N.D	
				Pb: N.D	
				Hg: N.D	
				Br: N.D	
123	123	All	XRF	Cd: N.D	N/T
				Cr: N.D	
				Pb: N.D	
				Hg: N.D	
				Br: N.D	
124	124	All	XRF	Cd: N.D	N/T
				Cr: N.D	
				Pb: N.D	
				Hg: N.D	
				Br: N.D	
125	125	All	XRF	Cd: N.D	N/T
				Cr: N.D	
				Pb: N.D	
				Hg: N.D	
				Br: N.D	

VERIFICATION REPORT

TESTED MATERIAL	SCHEME	TARGET RoHS SUBSTANCES	TEST METHOD USED	XRF RESULT (in mg/kg)	CHEMICAL TEST RESULT (in mg/kg)
126	126	All	XRF	Cd: N.D	N/T
				Cr: N.D	
				Pb: N.D	
				Hg: N.D	
				Br: N.D	
127	127	All	XRF	Cd: N.D	N/T
				Cr: N.D	
				Pb: N.D	
				Hg: N.D	
				Br: N.D	
128	128	All	XRF	Cd: N.D	N/T
				Cr: N.D	
				Pb: N.D	
				Hg: N.D	
				Br: N.D	
129	129	All	XRF	Cd: N.D	N/T
				Cr: N.D	
				Pb: N.D	
				Hg: N.D	
				Br: N.D	
130	130	All	XRF + Chemical	Cd: N.D	PBBs: N.D(<5.0) PBDEs: N.D(<5.0)
				Cr: N.D	
				Pb: N.D	
				Hg: N.D	
				Br: Inconclusive	
131	131	All	XRF	Cd: N.D	N/T
				Cr: N.D	
				Pb: N.D	
				Hg: N.D	
				Br: N.D	
132	132	All	XRF	Cd: N.D	N/T
				Cr: N.D	
				Pb: N.D	
				Hg: N.D	
				Br: N.D	
133	133	All	XRF	Cd: N.D	N/T
				Cr: N.D	
				Pb: N.D	
				Hg: N.D	
				Br: N.D	
134	134	All	XRF	Cd: N.D	N/T
				Cr: N.D	
				Pb: N.D	
				Hg: N.D	
				Br: N.D	

VERIFICATION REPORT

TESTED MATERIAL	SCHEME	TARGET RoHS SUBSTANCES	TEST METHOD USED	XRF RESULT (in mg/kg)	CHEMICAL TEST RESULT (in mg/kg)
135	135	All	XRF	Cd: N.D	N/T
				Cr: N.D	
				Pb: N.D	
				Hg: N.D	
				Br: N.D	
136	136	All	XRF	Cd: N.D	N/T
				Cr: N.D	
				Pb: N.D	
				Hg: N.D	
				Br: N.D	
137	137	All	XRF + Chemical	Cd: N.D	PBBs: N.D(<5.0) PBDEs: N.D(<5.0)
				Cr: N.D	
				Pb: N.D	
				Hg: N.D	
				Br: Inconclusive	
138	138	All	XRF + Chemical	Cd: N.D	Cr ⁶⁺ : N.D(<8.0) Pb: 0.6×10 ³
				Cr: Inconclusive	
				Pb: Inconclusive	
				Hg: N.D	
				Br: N.D	
139	139	All	XRF + Chemical	Cd: N.D	PBBs: N.D(<5.0) PBDEs: N.D(<5.0)
				Cr: N.D	
				Pb: N.D	
				Hg: N.D	
				Br: Inconclusive	
140	140	All	XRF + Chemical	Cd: N.D	Cr ⁶⁺ : N.D(<8.0) Pb: 0.7×10 ³
				Cr: Inconclusive	
				Pb: Inconclusive	
				Hg: N.D	
				Br: N.D	
141	141	All	XRF	Cd: N.D	N/T
				Cr: N.D	
				Pb: N.D	
				Hg: N.D	
				Br: N.D	
142	142	All	XRF	Cd: N.D	N/T
				Cr: N.D	
				Pb: N.D	
				Hg: N.D	
				Br: N.D	
143	143	All	XRF	Cd: N.D	N/T
				Cr: N.D	
				Pb: N.D	
				Hg: N.D	
				Br: N.D	

VERIFICATION REPORT

TESTED MATERIAL	SCHEME	TARGET RoHS SUBSTANCES	TEST METHOD USED	XRF RESULT (in mg/kg)	CHEMICAL TEST RESULT (in mg/kg)
144	144	All	XRF	Cd: N.D	N/T
				Cr: N.D	
				Pb: N.D	
				Hg: N.D	
				Br: N.D	
145	145	All	XRF	Cd: N.D	N/T
				Cr: N.D	
				Pb: N.D	
				Hg: N.D	
				Br: N.D	
146	146	All	XRF	Cd: N.D	N/T
				Cr: N.D	
				Pb: N.D	
				Hg: N.D	
				Br: N.D	
147	147	All	XRF	Cd: N.D	N/T
				Cr: N.D	
				Pb: N.D	
				Hg: N.D	
				Br: N.D	
148	148	All	XRF	Cd: N.D	N/T
				Cr: N.D	
				Pb: N.D	
				Hg: N.D	
				Br: N.D	
149	149	All	XRF + Chemical	Cd: N.D	PBBs: N.D(<5.0) PBDEs: N.D(<5.0)
				Cr: N.D	
				Pb: N.D	
				Hg: N.D	
				Br: Inconclusive	
150	150	All	XRF	Cd: N.D	N/T
				Cr: N.D	
				Pb: N.D	
				Hg: N.D	
				Br: N.D	
151	151	All	XRF	Cd: N.D	N/T
				Cr: N.D	
				Pb: N.D	
				Hg: N.D	
				Br: N.D	
152	152	All	XRF + Chemical	Cd: N.D	PBBs: N.D(<5.0) PBDEs: N.D(<5.0)
				Cr: N.D	
				Pb: N.D	
				Hg: N.D	
				Br: Inconclusive	

VERIFICATION REPORT

TESTED MATERIAL	SCHEME	TARGET RoHS SUBSTANCES	TEST METHOD USED	XRF RESULT (in mg/kg)	CHEMICAL TEST RESULT (in mg/kg)
153	153	All	XRF	Cd: N.D	N/T
				Cr: N.D	
				Pb: N.D	
				Hg: N.D	
				Br: N.D	
154	154	All	XRF + Chemical	Cd: N.D	PBBs: N.D(<5.0) PBDEs: N.D(<5.0)
				Cr: N.D	
				Pb: N.D	
				Hg: N.D	
				Br: Inconclusive	
155	155	All	XRF + Chemical	Cd: N.D	Cr ⁶⁺ : Negative
				Cr: Inconclusive	
				Pb: N.D	
				Hg: N.D	
				Br: N.D	
156	156	All	XRF + Chemical	Cd: N.D	Cr ⁶⁺ : Negative
				Cr: Inconclusive	
				Pb: N.D	
				Hg: N.D	
				Br: N.D	
157	157	All	XRF	Cd: N.D	N/T
				Cr: N.D	
				Pb: N.D	
				Hg: N.D	
				Br: N.D	
158	158	All	XRF	Cd: N.D	N/T
				Cr: N.D	
				Pb: N.D	
				Hg: N.D	
				Br: N.D	
159	159	All	XRF	Cd: N.D	N/T
				Cr: N.D	
				Pb: N.D	
				Hg: N.D	
				Br: N.D	
160	160	All	XRF	Cd: N.D	N/T
				Cr: N.D	
				Pb: N.D	
				Hg: N.D	
				Br: N.D	
161	161	All	XRF	Cd: N.D	N/T
				Cr: N.D	
				Pb: N.D	
				Hg: N.D	
				Br: N.D	

VERIFICATION REPORT

TESTED MATERIAL	SCHEME	TARGET RoHS SUBSTANCES	TEST METHOD USED	XRF RESULT (in mg/kg)	CHEMICAL TEST RESULT (in mg/kg)
162	162	All	XRF	Cd: N.D	N/T
				Cr: N.D	
				Pb: N.D	
				Hg: N.D	
				Br: N.D	
163	163	All	XRF	Cd: N.D	N/T
				Cr: N.D	
				Pb: N.D	
				Hg: N.D	
				Br: N.D	
164	164	All	XRF	Cd: N.D	N/T
				Cr: N.D	
				Pb: N.D	
				Hg: N.D	
				Br: N.D	
165	165	All	XRF + Chemical	Cd: N.D	PBBs: N.D(<5.0) PBDEs: N.D(<5.0)
				Cr: N.D	
				Pb: N.D	
				Hg: N.D	
				Br: Inconclusive	
166	166	All	XRF	Cd: N.D	N/T
				Cr: N.D	
				Pb: N.D	
				Hg: N.D	
				Br: N.D	
167	167	All	XRF	Cd: N.D	N/T
				Cr: N.D	
				Pb: N.D	
				Hg: N.D	
				Br: N.D	
168	168	All	XRF	Cd: N.D	N/T
				Cr: N.D	
				Pb: N.D	
				Hg: N.D	
				Br: N.D	
169	169	All	XRF + Chemical	Cd: N.D	Cr ⁶⁺ : Negative
				Cr: Inconclusive	
				Pb: N.D	
				Hg: N.D	
				Br: N.D	
170	170	All	XRF	Cd: N.D	N/T
				Cr: N.D	
				Pb: N.D	
				Hg: N.D	
				Br: N.D	

VERIFICATION REPORT

TESTED MATERIAL	SCHEME	TARGET RoHS SUBSTANCES	TEST METHOD USED	XRF RESULT (in mg/kg)	CHEMICAL TEST RESULT (in mg/kg)
171	171	All	XRF	Cd: N.D	N/T
				Cr: N.D	
				Pb: N.D	
				Hg: N.D	
				Br: N.D	
172	172	All	XRF	Cd: N.D	N/T
				Cr: N.D	
				Pb: N.D	
				Hg: N.D	
				Br: N.D	
173	173	All	XRF	Cd: N.D	N/T
				Cr: N.D	
				Pb: N.D	
				Hg: N.D	
				Br: N.D	
174	174	All	XRF + Chemical	Cd: N.D	PBBs: N.D(<5.0) PBDEs: N.D(<5.0)
				Cr: N.D	
				Pb: N.D	
				Hg: N.D	
				Br: Inconclusive	
175	175	All	XRF + Chemical	Cd: N.D	Cr ⁶⁺ : N.D(<8.0)
				Cr: Inconclusive	
				Pb: N.D	
				Hg: N.D	
				Br: N.D	
176	176	All	XRF	Cd: N.D	N/T
				Cr: N.D	
				Pb: N.D	
				Hg: N.D	
				Br: N.D	
177	177	All	XRF	Cd: N.D	N/T
				Cr: N.D	
				Pb: N.D	
				Hg: N.D	
				Br: N.D	
178	178	All	XRF	Cd: N.D	N/T
				Cr: N.D	
				Pb: N.D	
				Hg: N.D	
				Br: N.D	
179	179	All	XRF	Cd: N.D	N/T
				Cr: N.D	
				Pb: N.D	
				Hg: N.D	
				Br: N.D	

VERIFICATION REPORT

TESTED MATERIAL	SCHEME	TARGET RoHS SUBSTANCES	TEST METHOD USED	XRF RESULT (in mg/kg)	CHEMICAL TEST RESULT (in mg/kg)
180	180	All	XRF	Cd: N.D	N/T
				Cr: N.D	
				Pb: N.D	
				Hg: N.D	
				Br: N.D	
181	181	All	XRF	Cd: N.D	N/T
				Cr: N.D	
				Pb: N.D	
				Hg: N.D	
				Br: N.D	
182	182	All	XRF	Cd: N.D	N/T
				Cr: N.D	
				Pb: N.D	
				Hg: N.D	
				Br: N.D	
183	183	All	XRF	Cd: N.D	N/T
				Cr: N.D	
				Pb: N.D	
				Hg: N.D	
				Br: N.D	
184	184	All	XRF	Cd: N.D	N/T
				Cr: N.D	
				Pb: N.D	
				Hg: N.D	
				Br: N.D	
185	185	All	XRF	Cd: N.D	N/T
				Cr: N.D	
				Pb: N.D	
				Hg: N.D	
				Br: N.D	
186	186	All	XRF	Cd: N.D	N/T
				Cr: N.D	
				Pb: N.D	
				Hg: N.D	
				Br: N.D	
187	187	All	XRF	Cd: N.D	N/T
				Cr: N.D	
				Pb: N.D	
				Hg: N.D	
				Br: N.D	
188	188	All	XRF	Cd: N.D	N/T
				Cr: N.D	
				Pb: N.D	
				Hg: N.D	
				Br: N.D	

VERIFICATION REPORT

TESTED MATERIAL	SCHEME	TARGET RoHS SUBSTANCES	TEST METHOD USED	XRF RESULT (in mg/kg)	CHEMICAL TEST RESULT (in mg/kg)
189	189	All	XRF + Chemical	Cd: N.D	PBBs: N.D(<5.0) PBDEs: N.D(<5.0)
				Cr: N.D	
				Pb: N.D	
				Hg: N.D	
				Br: Inconclusive	
190	190	All	XRF	Cd: N.D	N/T
				Cr: N.D	
				Pb: N.D	
				Hg: N.D	
				Br: N.D	
191	191	All	XRF	Cd: N.D	N/T
				Cr: N.D	
				Pb: N.D	
				Hg: N.D	
				Br: N.D	
192	192	All	XRF	Cd: N.D	N/T
				Cr: N.D	
				Pb: N.D	
				Hg: N.D	
				Br: N.D	
193	193	All	XRF	Cd: N.D	N/T
				Cr: N.D	
				Pb: N.D	
				Hg: N.D	
				Br: N.D	
194	194	All	XRF	Cd: N.D	N/T
				Cr: N.D	
				Pb: N.D	
				Hg: N.D	
				Br: N.D	
195	195	All	XRF	Cd: N.D	N/T
				Cr: N.D	
				Pb: N.D	
				Hg: N.D	
				Br: N.D	
196	196	All	XRF	Cd: N.D	N/T
				Cr: N.D	
				Pb: N.D	
				Hg: N.D	
				Br: N.D	
197	197	All	XRF	Cd: N.D	N/T
				Cr: N.D	
				Pb: N.D	
				Hg: N.D	
				Br: N.D	

VERIFICATION REPORT

TESTED MATERIAL	SCHEME	TARGET RoHS SUBSTANCES	TEST METHOD USED	XRF RESULT (in mg/kg)	CHEMICAL TEST RESULT (in mg/kg)
198	198	All	XRF	Cd: N.D	N/T
				Cr: N.D	
				Pb: N.D	
				Hg: N.D	
				Br: N.D	
199	199	All	XRF	Cd: N.D	N/T
				Cr: N.D	
				Pb: N.D	
				Hg: N.D	
				Br: N.D	
200	200	All	XRF	Cd: N.D	N/T
				Cr: N.D	
				Pb: N.D	
				Hg: N.D	
				Br: N.D	
201	201	All	XRF + Chemical	Cd: N.D	Cr ⁶⁺ : Negative
				Cr: Inconclusive	
				Pb: N.D	
				Hg: N.D	
				Br: N.D	
202	202	All	XRF + Chemical	Cd: N.D	Cr ⁶⁺ : Negative
				Cr: Inconclusive	
				Pb: N.D	
				Hg: N.D	
				Br: N.D	
203	203	All	XRF + Chemical	Cd: N.D	Cr ⁶⁺ : Negative
				Cr: Inconclusive	
				Pb: N.D	
				Hg: N.D	
				Br: N.D	
204	204	All	XRF + Chemical	Cd: N.D	Cr ⁶⁺ : Negative
				Cr: Inconclusive	
				Pb: N.D	
				Hg: N.D	
				Br: N.D	
205	205	All	XRF	Cd: N.D	N/T
				Cr: N.D	
				Pb: N.D	
				Hg: N.D	
				Br: N.D	
206	206	All	XRF + Chemical	Cd: N.D	PBBs: N.D(<5.0) PBDEs: N.D(<5.0)
				Cr: N.D	
				Pb: N.D	
				Hg: N.D	
				Br: Inconclusive	

VERIFICATION REPORT

TESTED MATERIAL	SCHEME	TARGET RoHS SUBSTANCES	TEST METHOD USED	XRF RESULT (in mg/kg)	CHEMICAL TEST RESULT (in mg/kg)
207	207	All	XRF	Cd: N.D	N/T
				Cr: N.D	
				Pb: N.D	
				Hg: N.D	
				Br: N.D	
208	208	All	XRF	Cd: N.D	N/T
				Cr: N.D	
				Pb: N.D	
				Hg: N.D	
				Br: N.D	
209	209	All	XRF + Chemical	Cd: N.D	PBBs: N.D(<5.0) PBDEs: N.D(<5.0)
				Cr: N.D	
				Pb: N.D	
				Hg: N.D	
				Br: Inconclusive	

Remark: in the following pages in this report:

- RL = Reporting Limits
- N.D = Not Detected (<RL)
- MDL = Method Detection Limit
- Mg/kg = parts per million = ppm
- N/T = Not tested
- Negative = Absence of Cr⁶⁺ coating

- As claimed by the information submitted by the supplier of applicant.

- *: The cadmium content of component (51) is coming from electrical contacts. According to EU RoHS recast directive (2011/65/EU), cadmium and its compounds in electrical contacts can be exempted.

VERIFICATION REPORT

(2) To determine Bis(2-ethylhexyl) phthalate (DEHP), Butyl benzyl phthalate(BBP), Dibutyl phthalate(DBP), Diisobutyl phthalate(DIBP):

Tested Item(s)	Content (mg/kg)					RL
	2	3	4	9	10	
Bis(2-ethylhexyl) phthalate (DEHP)	N.D	N.D	N.D	N.D	N.D	150.0
Butyl benzyl phthalate(BBP)	N.D	N.D	N.D	N.D	N.D	150.0
Dibutyl phthalate(DBP)	N.D	N.D	N.D	N.D	N.D	150.0
Diisobutyl phthalate(DIBP)	N.D	N.D	N.D	N.D	N.D	150.0

Tested Item(s)	Content (mg/kg)					RL
	14	17	18	22	27	
Bis(2-ethylhexyl) phthalate (DEHP)	N.D	N.D	N.D	N.D	N.D	150.0
Butyl benzyl phthalate(BBP)	N.D	N.D	N.D	N.D	N.D	150.0
Dibutyl phthalate(DBP)	N.D	N.D	N.D	N.D	N.D	150.0
Diisobutyl phthalate(DIBP)	N.D	N.D	N.D	N.D	N.D	150.0

Tested Item(s)	Content (mg/kg)					RL
	30	33	35	37	43	
Bis(2-ethylhexyl) phthalate (DEHP)	N.D	N.D	N.D	N.D	N.D	150.0
Butyl benzyl phthalate(BBP)	N.D	N.D	N.D	N.D	N.D	150.0
Dibutyl phthalate(DBP)	N.D	N.D	N.D	N.D	N.D	150.0
Diisobutyl phthalate(DIBP)	N.D	N.D	N.D	N.D	N.D	150.0

Tested Item(s)	Content (mg/kg)					RL
	44	45	46	55	56	
Bis(2-ethylhexyl) phthalate (DEHP)	N.D	N.D	N.D	N.D	N.D	150.0
Butyl benzyl phthalate(BBP)	N.D	N.D	N.D	N.D	N.D	150.0
Dibutyl phthalate(DBP)	N.D	N.D	N.D	N.D	N.D	150.0
Diisobutyl phthalate(DIBP)	N.D	N.D	N.D	N.D	N.D	150.0

VERIFICATION REPORT

Tested Item(s)	Content (mg/kg)					RL
	59	63	64	65	66	
Bis(2-ethylhexyl) phthalate (DEHP)	N.D	N.D	N.D	N.D	N.D	150.0
Butyl benzyl phthalate(BBP)	N.D	N.D	N.D	N.D	N.D	150.0
Dibutyl phthalate(DBP)	N.D	N.D	N.D	N.D	N.D	150.0
Diisobutyl phthalate(DIBP)	N.D	N.D	N.D	N.D	N.D	150.0

Tested Item(s)	Content (mg/kg)					RL
	68	72	73	74	75	
Bis(2-ethylhexyl) phthalate (DEHP)	N.D	N.D	N.D	N.D	N.D	150.0
Butyl benzyl phthalate(BBP)	N.D	N.D	N.D	N.D	N.D	150.0
Dibutyl phthalate(DBP)	N.D	N.D	N.D	N.D	N.D	150.0
Diisobutyl phthalate(DIBP)	N.D	N.D	N.D	N.D	N.D	150.0

Tested Item(s)	Content (mg/kg)					RL
	76	77	83	85	87	
Bis(2-ethylhexyl) phthalate (DEHP)	N.D	N.D	N.D	N.D	N.D	150.0
Butyl benzyl phthalate(BBP)	N.D	N.D	N.D	N.D	N.D	150.0
Dibutyl phthalate(DBP)	N.D	N.D	N.D	N.D	N.D	150.0
Diisobutyl phthalate(DIBP)	N.D	N.D	N.D	N.D	N.D	150.0

Tested Item(s)	Content (mg/kg)					RL
	88	89	90	91	95	
Bis(2-ethylhexyl) phthalate (DEHP)	N.D	N.D	N.D	N.D	N.D	150.0
Butyl benzyl phthalate(BBP)	N.D	N.D	N.D	N.D	N.D	150.0
Dibutyl phthalate(DBP)	N.D	N.D	N.D	N.D	N.D	150.0
Diisobutyl phthalate(DIBP)	N.D	N.D	N.D	N.D	N.D	150.0

VERIFICATION REPORT

Tested Item(s)	Content (mg/kg)					RL
	97	100	102	107	109	
Bis(2-ethylhexyl) phthalate (DEHP)	N.D	N.D	N.D	N.D	N.D	150.0
Butyl benzyl phthalate(BBP)	N.D	N.D	N.D	N.D	N.D	150.0
Dibutyl phthalate(DBP)	N.D	N.D	N.D	N.D	N.D	150.0
Diisobutyl phthalate(DIBP)	N.D	N.D	N.D	N.D	N.D	150.0

Tested Item(s)	Content (mg/kg)					RL
	117	118	121	122	123	
Bis(2-ethylhexyl) phthalate (DEHP)	N.D	N.D	N.D	N.D	N.D	150.0
Butyl benzyl phthalate(BBP)	N.D	N.D	N.D	N.D	N.D	150.0
Dibutyl phthalate(DBP)	N.D	N.D	N.D	N.D	N.D	150.0
Diisobutyl phthalate(DIBP)	N.D	N.D	N.D	N.D	N.D	150.0

Tested Item(s)	Content (mg/kg)					RL
	150	151	152	154	158	
Bis(2-ethylhexyl) phthalate (DEHP)	N.D	2.5×10 ²	N.D	N.D	N.D	150.0
Butyl benzyl phthalate(BBP)	N.D	N.D	N.D	N.D	N.D	150.0
Dibutyl phthalate(DBP)	N.D	N.D	N.D	N.D	N.D	150.0
Diisobutyl phthalate(DIBP)	N.D	N.D	N.D	N.D	N.D	150.0

Tested Item(s)	Content (mg/kg)					RL
	159	174	178	179	180	
Bis(2-ethylhexyl) phthalate (DEHP)	N.D	N.D	N.D	N.D	N.D	150.0
Butyl benzyl phthalate(BBP)	N.D	N.D	N.D	N.D	N.D	150.0
Dibutyl phthalate(DBP)	N.D	N.D	N.D	N.D	N.D	150.0
Diisobutyl phthalate(DIBP)	N.D	N.D	N.D	N.D	N.D	150.0

VERIFICATION REPORT

Tested Item(s)	Content (mg/kg)					RL
	181	184	186	187	189	
Bis(2-ethylhexyl) phthalate (DEHP)	N.D	N.D	N.D	N.D	N.D	150.0
Butyl benzyl phthalate(BBP)	N.D	N.D	N.D	N.D	N.D	150.0
Dibutyl phthalate(DBP)	N.D	N.D	N.D	N.D	N.D	150.0
Diisobutyl phthalate(DIBP)	N.D	N.D	N.D	N.D	N.D	150.0

Tested Item(s)	Content (mg/kg)					RL
	190	193	194	196	197	
Bis(2-ethylhexyl) phthalate (DEHP)	N.D	N.D	N.D	N.D	N.D	150.0
Butyl benzyl phthalate(BBP)	N.D	N.D	N.D	N.D	N.D	150.0
Dibutyl phthalate(DBP)	N.D	N.D	N.D	N.D	N.D	150.0
Diisobutyl phthalate(DIBP)	N.D	N.D	N.D	N.D	N.D	150.0

Tested Item(s)	Content (mg/kg)				RL
	199	200	206	209	
Bis(2-ethylhexyl) phthalate (DEHP)	N.D	N.D	N.D	N.D	150.0
Butyl benzyl phthalate(BBP)	N.D	N.D	N.D	N.D	150.0
Dibutyl phthalate(DBP)	N.D	N.D	N.D	N.D	150.0
Diisobutyl phthalate(DIBP)	N.D	N.D	N.D	N.D	150.0

Remark: in the following pages in this report:

- RL = Reporting Limits
- MDL = Method Detection Limit
- N.D = Not Detected (<RL)
- Mg/kg = parts per million = ppm

- As specified by client, the result of tested components (179, 186, 187, 192, 193, 194, 199 and 200) based on sample received on Feb. 27, 2019.

- As specified by client, the result of tested components (90 and 91) based on sample received on Apr. 09, 2019.

VERIFICATION REPORT

TEST METHODS:

- (1) Sample prepared with reference to IEC 62321-2:2013 Determination of certain substances in electrotechnical products – Part 2: Disassembly, disjunction and mechanical sample preparation;
- (2) Sample Screening testing with reference to IEC 62321-3-1:2013 Determination of certain substances in electrotechnical products – Part 3-1: Screening – Lead, mercury, Cadmium, total chromium and total bromine using X-ray fluorescence spectrometry;
 - (a) It is the result on total Br while test item on restricted substances is PBBs/PBDEs. It is the result on total Cr while test item on restricted substances is Cr⁶⁺.
 - (b) Results are obtained by XRF for primary screening, and further chemical testing by ICP-OES(for Cd, Pb, Hg), UV-Vis(for Cr⁶⁺) and GC/MS(for PBBs, PBDEs) is recommended to be performed.
XRF screening limits in mg/kg for regulated elements according to IEC 62321-3-1:2013

ELEMENT	POLYMER	METALS	COMPOSITE MATERIAL
Cd	BL≤(70-3σ) <X<(130+3σ) ≤OL	BL≤(70-3σ) <X<(130+3σ) ≤OL	LOD < X < (150+3σ) ≤ OL
Pb	BL≤(700-3σ) <X<(1300+3σ) ≤OL	BL≤(700-3σ) <X<(1300+3σ) ≤OL	BL≤(500-3σ) <X<(1500+3σ) ≤OL
Hg	BL≤(700-3σ) <X<(1300+3σ) ≤OL	BL≤(700-3σ) <X<(1300+3σ) ≤OL	BL≤(500-3σ) <X<(1500+3σ) ≤OL
Cr	BL≤(700-3σ) <X	BL≤(700-3σ) <X	BL≤(500-3σ) <X
Br	BL≤(300-3σ) <X	--	BL≤(250-3σ) <X

Note: BL = Below Limit, OL = Over Limit, LOD = Limit of Detection, -- = Not Regulated

The XRF screening test for RoHS elements – The reading may be different to the actual content in the sample be of non-uniformity composition.

(3) Wet Chemical Test Method

TESTING ITEM	CHEMICAL TESTING METHOD	MDL	LIMIT
Cd	With reference to IEC 62321-5:2013, by acid digestion and determined by ICP-OES	2.0mg/kg	100mg/kg
Pb	With reference to IEC 62321-5:2013, by acid digestion and determined by ICP-OES	2.0mg/kg	1000mg/kg
Hg	With reference to IEC 62321-4:2013+A1:2017, by acid digestion and determined by ICP-OES	2.0mg/kg	1000mg/kg
Cr ⁶⁺ (for non metal)	With reference to IEC 62321-7-2:2017, by alkaline digestion and determined by UV-VIS spectrophotometer	8.0mg/kg	1000mg/kg
Cr ⁶⁺ (for metal)	With reference to IEC 62321-7-1:2015 by spot – test	0.1μg/cm ²	1000mg/kg
PBBs Content	With reference to IEC 62321-6:2015, by solvent extraction and determined by GC-MS	5.0mg/kg	1000mg/kg
PBDEs Content	With reference to IEC 62321-6:2015, by solvent extraction and determined by GC-MS	5.0mg/kg	1000mg/kg

Note: According to IEC 62321-7-1:2015, result on Cr⁶⁺ for metal sample is shown as Positive/Negative.

VERIFICATION REPORT

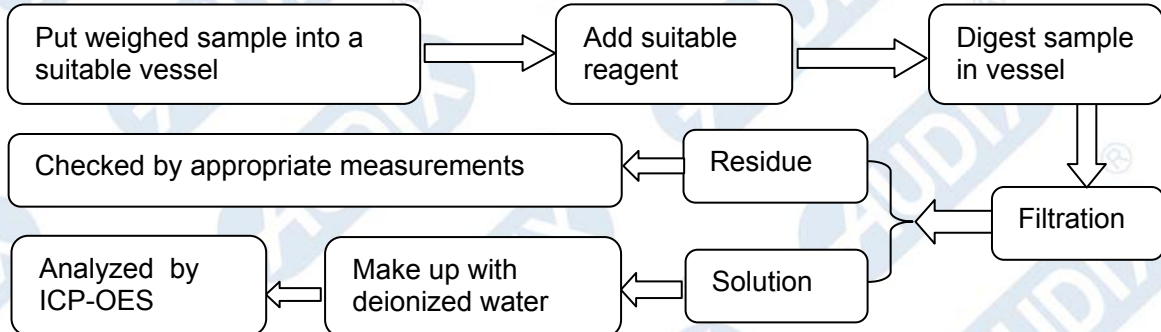
(4) DEHP、BBP、DBP、DIBP Test Method

<u>TESTING ITEM</u>	<u>CHEMICAL TESTING METHOD</u>	<u>MDL</u>	<u>LIMIT</u>
DEHP	With reference to IEC 62321-8:2017, by solvent extraction and determined by GC-MS	50.0mg/kg	1000mg/kg
BBP	With reference to IEC 62321-8:2017, by solvent extraction and determined by GC-MS	50.0mg/kg	1000mg/kg
DBP	With reference to IEC 62321-8:2017, by solvent extraction and determined by GC-MS	50.0mg/kg	1000mg/kg
DIBP	With reference to IEC 62321-8:2017, by solvent extraction and determined by GC-MS	50.0mg/kg	1000mg/kg

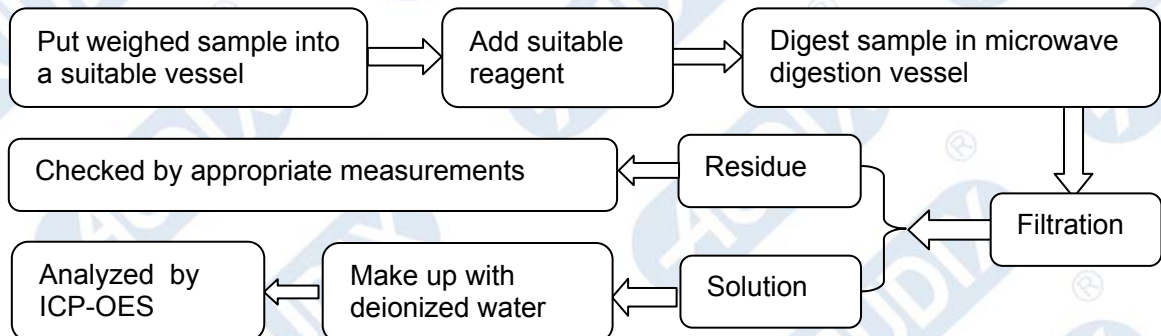
VERIFICATION REPORT

TEST PROCESS

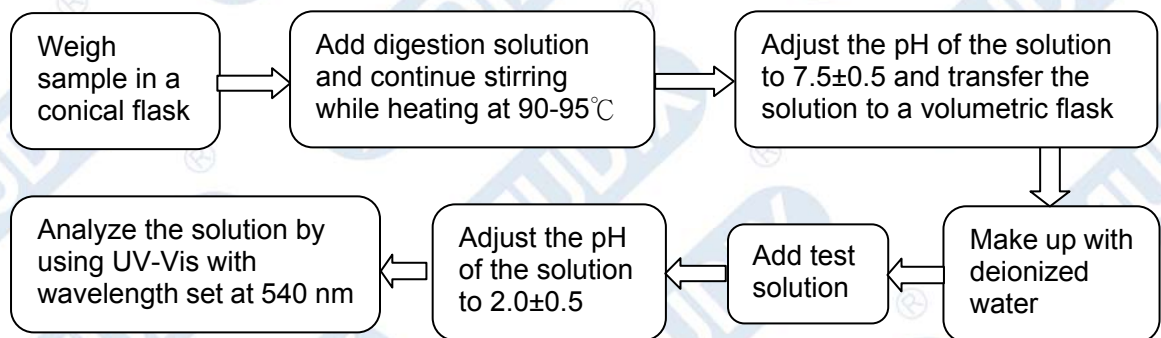
1. Test for Lead (Pb), Cadmium (Cd) contents(IEC 62321-5:2013):



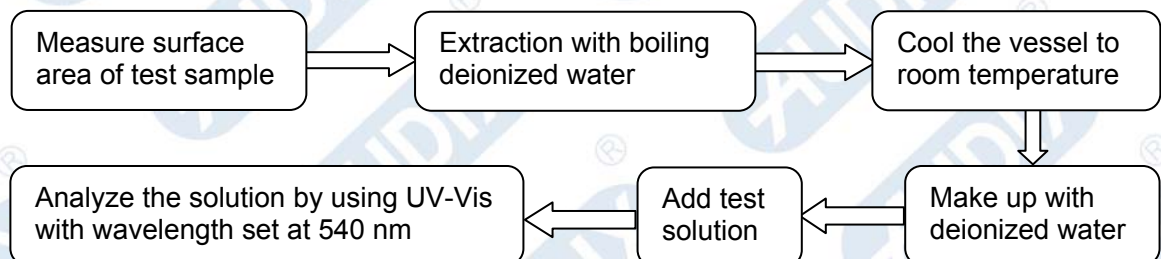
2. Test for Mercury (Hg) contents (IEC 62321-4:2013+A1:2017):

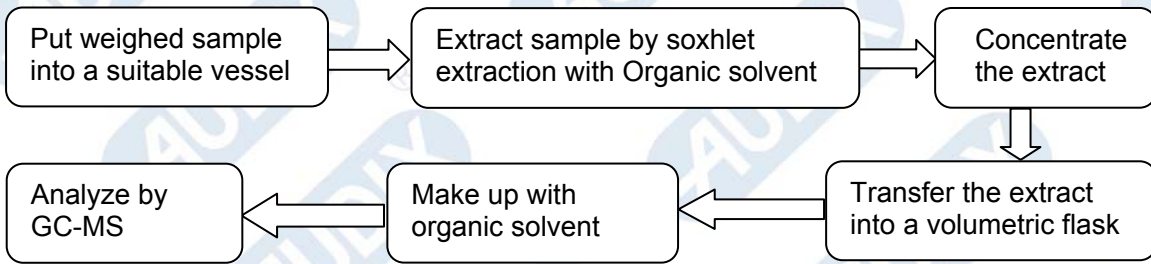
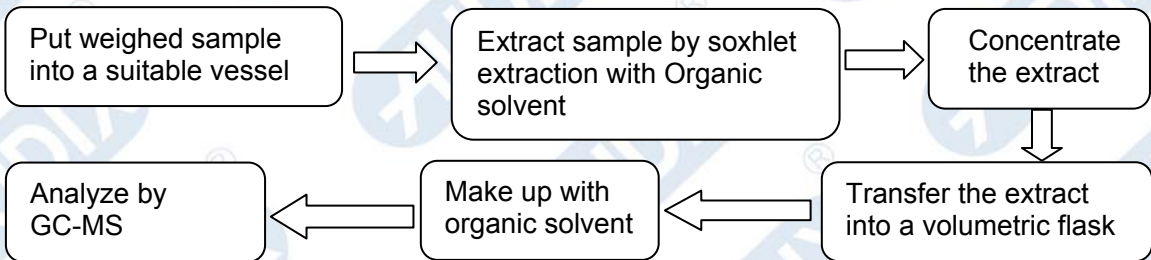


3. Test for Chromium (Cr(VI)) contents (IEC 62321-7-2:2017):



4. Test for Chromium(Cr(VI)) contents (IEC 62321-7-1:2015):



VERIFICATION REPORT**5. Test for PBBs & PBDEs contents (IEC 62321-6:2015):****6. Test for DEHP、DBP、BBP、DIBP contents (IEC 62321-8:2017):**

VERIFICATION REPORT**INFORMATION OF TEST SAMPLE****(I) Sample description:**

- (1) Silver color metal with black printing
- (2) White label with black printing
- (3) White label with black printing
- (4) White label with black printing
- (5) Silver color screw
- (6) Silver color screw
- (7) Silver color screw
- (8) Silver color metal
- (9) Transparent plastic
- (10) White glue
- (11) Silver color metal
- (12) Silver color metal
- (13) Green ceramic
- (14) Beige plastic
- (15) Silver color metal pin
- (16) Silver color metal
- (17) Yellow fiberboard
- (18) Gray rubber
- (19) Black ceramic
- (20) Black ceramic
- (21) Black ceramic
- (22) Black rubber
- (23) Silver color screw
- (24) Silver color screw
- (25) Silver color screw
- (26) Silver color screw
- (27) Gray plastic with white printing
- (28) Black plastic
- (29) Silver color plastic film
- (30) Gray plastic with black printing
- (31) White plastic
- (32) Silver color plastic film
- (33) Gray plastic with black printing
- (34) Beige plastic
- (35) Gray plastic with black printing
- (36) Black plastic
- (37) Black rubber
- (38) Silver color metal pin
- (39) White ceramic
- (40) Silver color wire
- (41) Silver color metal
- (42) Beige powder
- (43) Black plastic with white printing
- (44) Black plastic
- (45) Beige plastic
- (46) White plastic
- (47) Silver color metal

Shenzhen Xinhua Testing Measurement Co., Ltd.Room 4202&4203, Bldg.25, Keyuan West, No.5 Kezhi Road West
Science and Technology Industrial Park, Nanshan,
Shenzhen, Guangdong, P.R.China

Tel : (0755) 2663-9005 Fax : (0755) 2663-9006

TRF No.: VP2.0

VERIFICATION REPORT

- (48) Silver color metal
- (49) Copper color wires
- (50) Copper color metal
- (51) Silver/copper color metal
- (52) Copper color metal
- (53) Copper color metal
- (54) Black ceramic with green coating
- (55) Yellow fiberboard
- (56) Yellow fiberboard
- (57) Copper color wires
- (58) Black glue
- (59) Silver color label with black printing
- (60) Black ceramic
- (61) Red wires
- (62) Black glue
- (63) Black plastic
- (64) Silver color label with black printing
- (65) Brown adhesive tape
- (66) Black plastic
- (67) Black ceramic
- (68) Transparent rubber
- (69) Yellow plastic wire jacket
- (70) Copper color wires
- (71) Copper color wires
- (72) Silver color label with black printing
- (73) Yellow adhesive tape
- (74) Brown adhesive tape
- (75) White adhesive tape
- (76) Transparent rubber
- (77) Black plastic
- (78) Black ceramic
- (79) Yellow plastic wire jacket
- (80) Copper color wires
- (81) Copper color wires
- (82) Silver color label with black printing
- (83) Brown adhesive tape
- (84) Black glue
- (85) Yellow fiberboard
- (86) Gray ceramic
- (87) Black rubber
- (88) Transparent rubber
- (89) Brown plastic
- (90) Black plastic
- (91) Black plastic
- (92) Yellow plastic wire jacket
- (93) Copper color wires
- (94) Silver color metal
- (95) Yellow adhesive tape
- (96) Black ceramic
- (97) Black plastic
- (98) Silver color metal

VERIFICATION REPORT

- (99) Copper color wires
- (100) Black plastic with white printing
- (101) Semi-transparent paper sheet
- (102) Black rubber
- (103) Silver color metal
- (104) Dull silver color metal
- (105) Dull silver color metal
- (106) Silver color metal pin
- (107) Green plastic with white printing
- (108) Semi-transparent paper sheet
- (109) Black rubber
- (110) Silver color metal
- (111) Dull silver color metal
- (112) Dull silver color metal
- (113) Silver color metal pin
- (114) Silver color metal with blue printing
- (115) Black treated metal
- (116) Silver color metal pin
- (117) Black rubber
- (118) Brown plastic with white printing
- (119) Transparent adhesive tape
- (120) Semi-transparent paper sheet
- (121) Brown fiberboard
- (122) Black rubber
- (123) Brown plastic
- (124) Silver color metal
- (125) Dull silver color metal
- (126) Dull silver color metal
- (127) Silver color metal
- (128) Silver color metal
- (129) Black ceramic
- (130) Black ceramic
- (131) Blue ceramic
- (132) Blue ceramic
- (133) Blue ceramic
- (134) Black ceramic
- (135) White ceramic
- (136) Brown ceramic
- (137) Black ceramic
- (138) Black ceramic with white printing
- (139) Black ceramic with white printing
- (140) Black ceramic with white printing
- (141) Soldering tin
- (142) Brown ceramic
- (143) Black ceramic
- (144) Black ceramic
- (145) Black ceramic
- (146) Black ceramic
- (147) White ceramic
- (148) Black ceramic
- (149) Conformal coating with green solder mask & Gold color plated silver color metal pad &

VERIFICATION REPORT**Fiberboard**

- (150) White plastic**
- (151) Black rubber**
- (152) Black plastic**
- (153) Gold label with black printing**
- (154) Black plastic**
- (155) Silver color metal**
- (156) Silver color screw**
- (157) Silver color metal pin**
- (158) Red plastic wire jacket**
- (159) Black plastic wire jacket**
- (160) Silver color wires**
- (161) Black ceramic**
- (162) Black ceramic**
- (163) Brown ceramic**
- (164) Black ceramic**
- (165) Conformal coating with green solder mask & Gold color plated silver color metal pad & Fiberboard**
- (166) Soldering tin**
- (167) Silver color metal**
- (168) Silver color metal**
- (169) Silver color metal**
- (170) Black treated spring**
- (171) Silver color metal pin**
- (172) Copper color wires**
- (173) Black rubber**
- (174) Black plastic**
- (175) Beige glue**
- (176) Green glue**
- (177) White plastic**
- (178) Black plastic**
- (179) Black adhesive tape**
- (180) Black rubber**
- (181) Black rubber**
- (182) Silver color metal**
- (183) Soldering tin**
- (184) Yellow/green plastic wire jacket**
- (185) Silver color metal**
- (186) Black plastic wire jacket**
- (187) Blue plastic wire jacket**
- (188) Silver color wires**
- (189) White plastic**
- (190) White sponge**
- (191) Black treated metal**
- (192) Soldering tin**
- (193) Gray plastic wire jacket**
- (194) Blue plastic wire jacket**
- (195) Silver color metal**
- (196) Black rubber**
- (197) Semi-transparent plastic**
- (198) Copper/silver color metal**

VERIFICATION REPORT

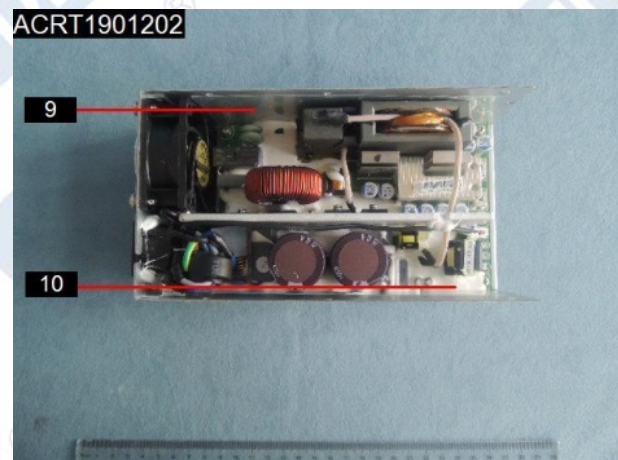
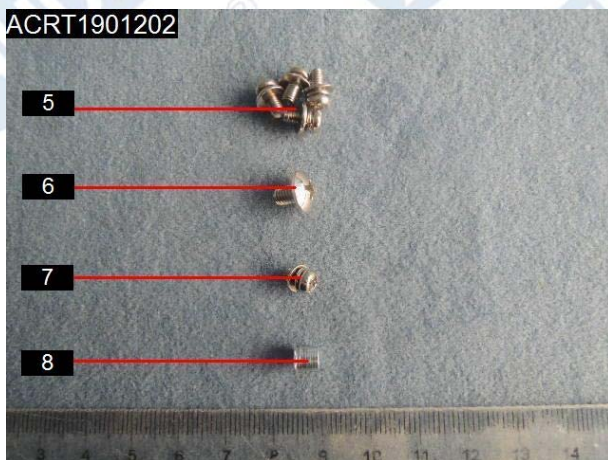
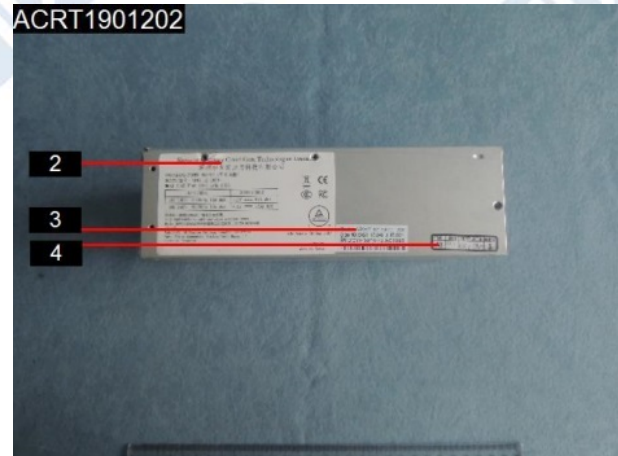
- (199) Yellow plastic wire jacket
- (200) Black plastic wire jacket
- (201) Silver color metal
- (202) Silver color metal
- (203) Silver color metal
- (204) Silver color metal
- (205) Brown plastic
- (206) Yellow plastic with gray printing
- (207) Silver color metal pin
- (208) Silver color plastic film
- (209) Yellow plastic

VERIFICATION REPORT

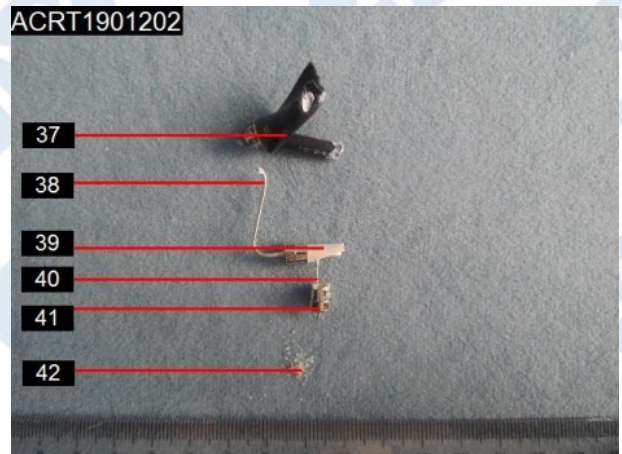
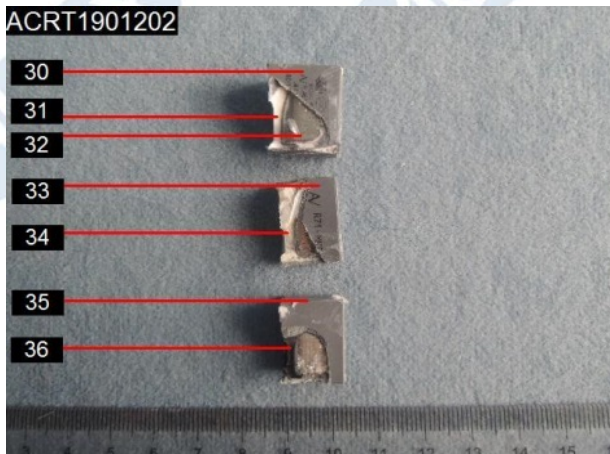
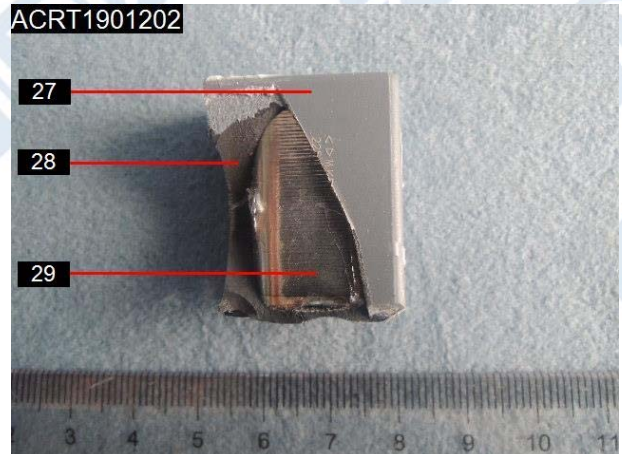
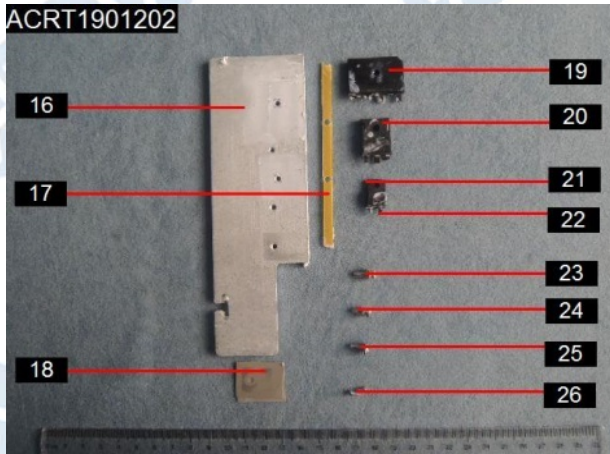
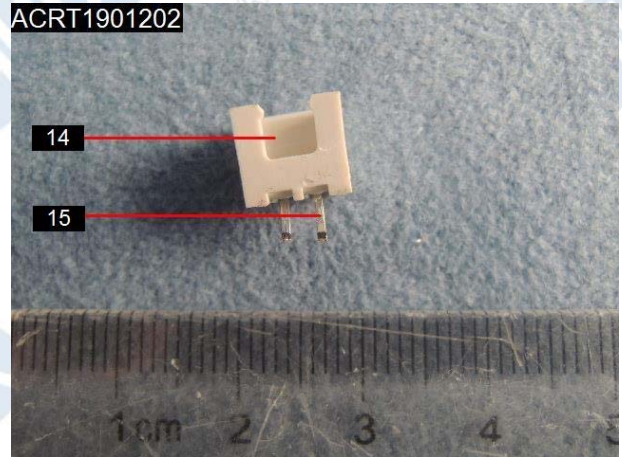
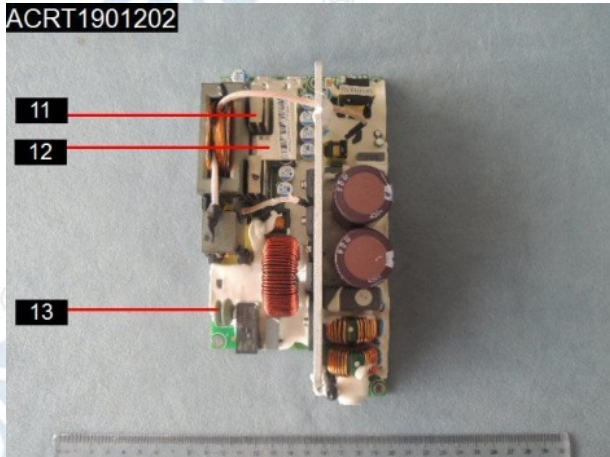
(II) Photo(s) of test sample(s):



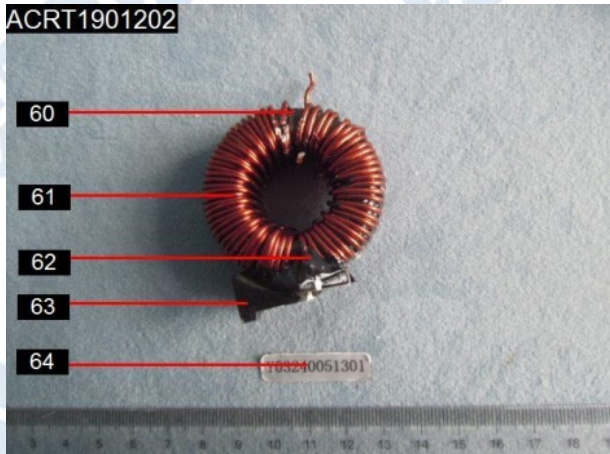
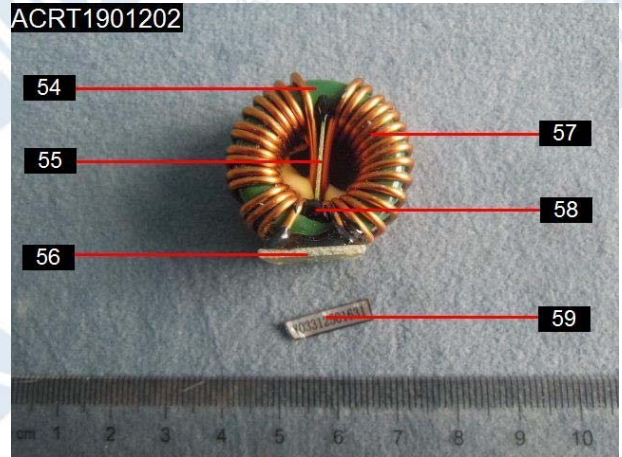
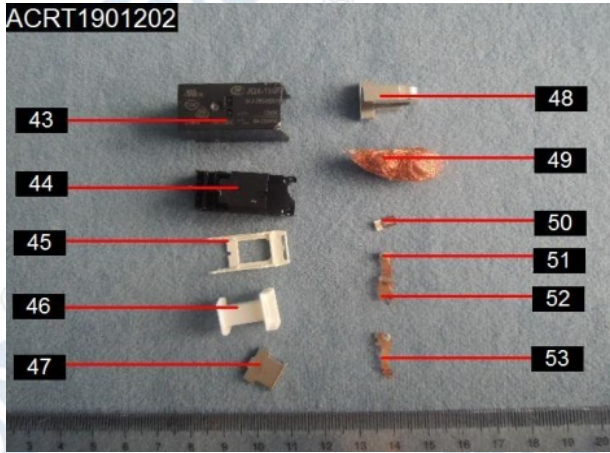
(Whole product)



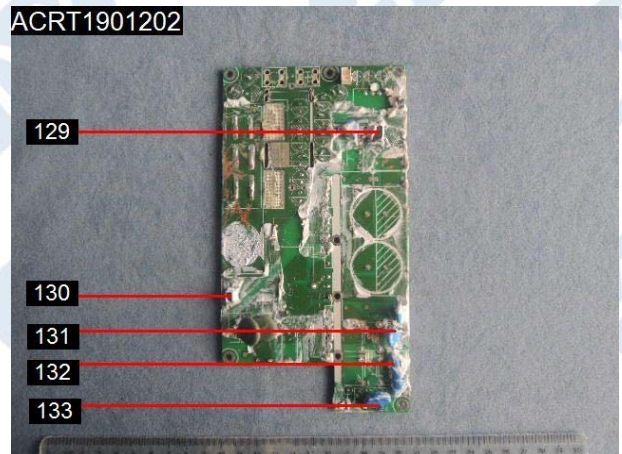
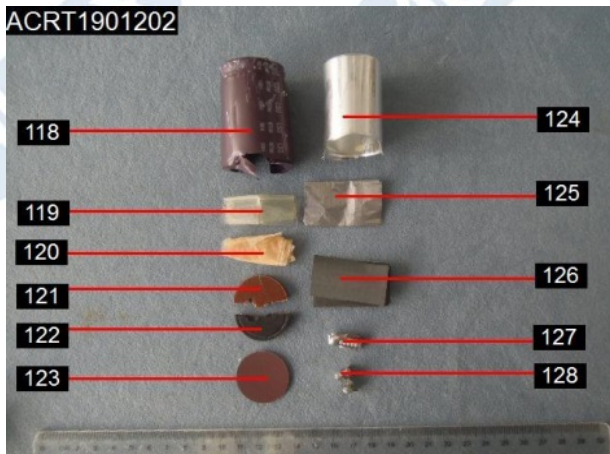
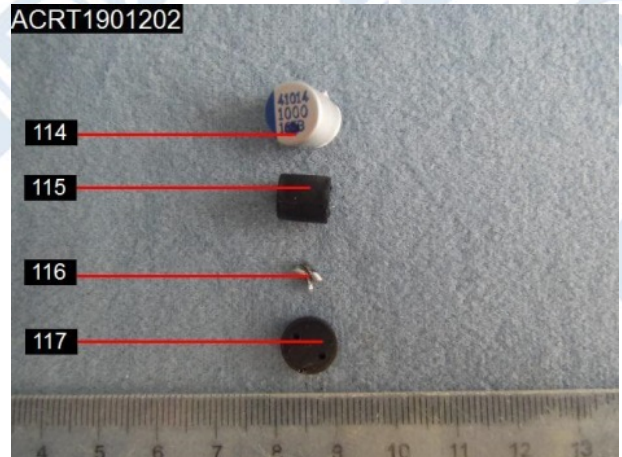
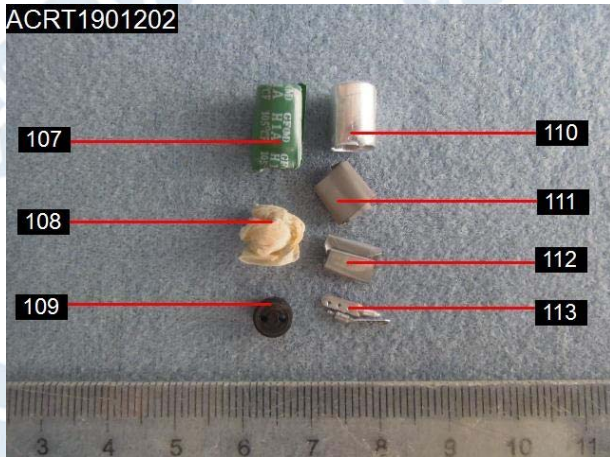
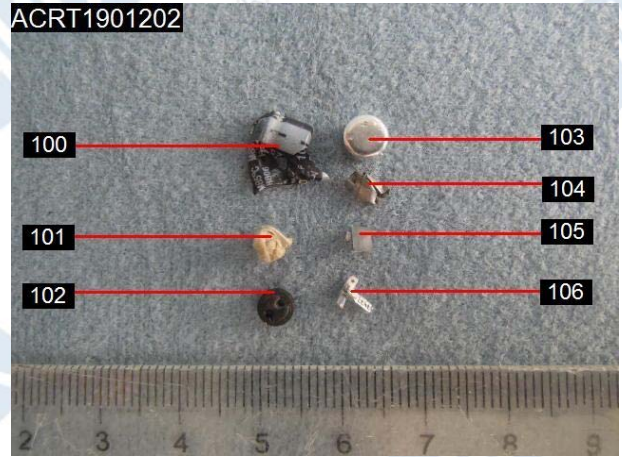
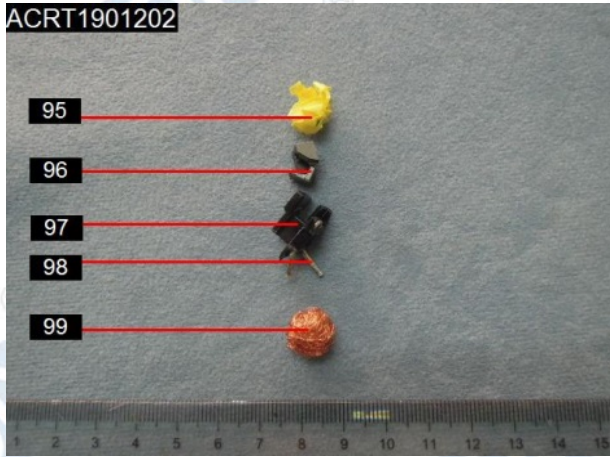
VERIFICATION REPORT



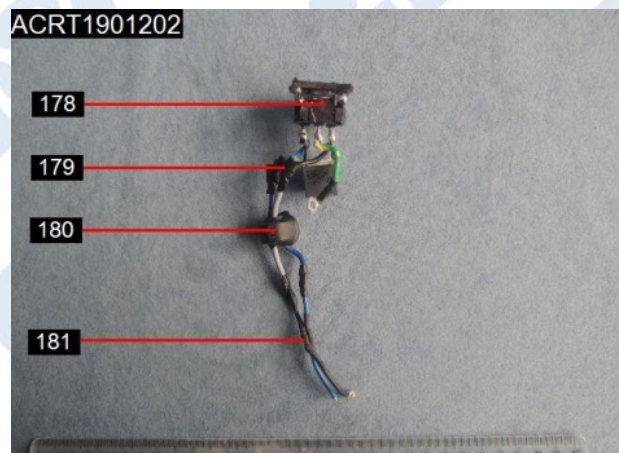
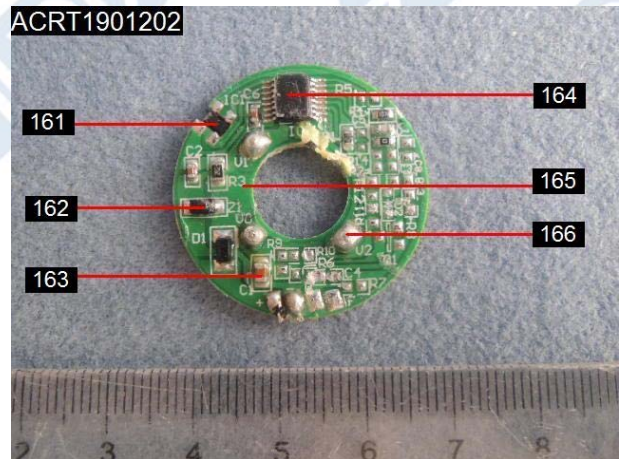
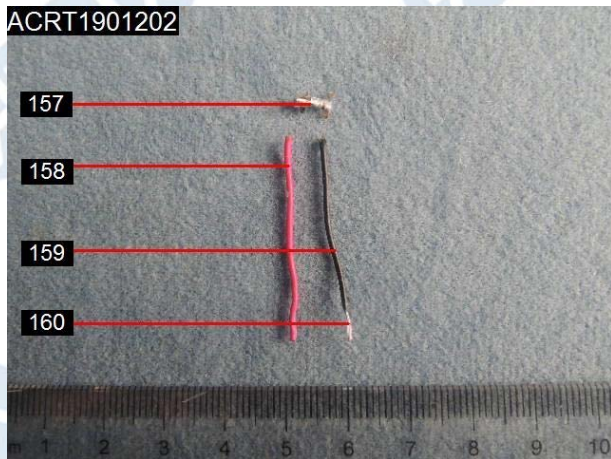
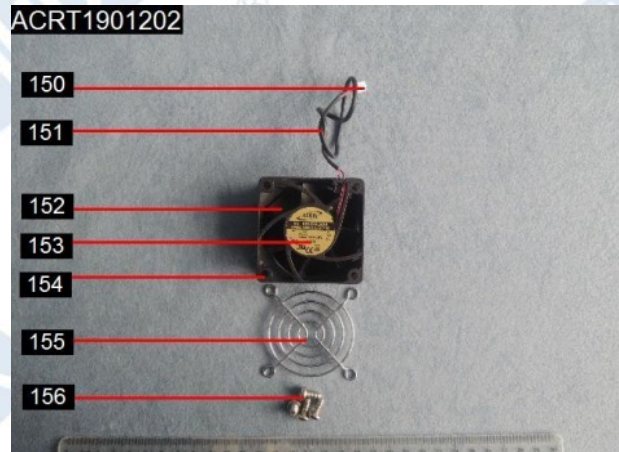
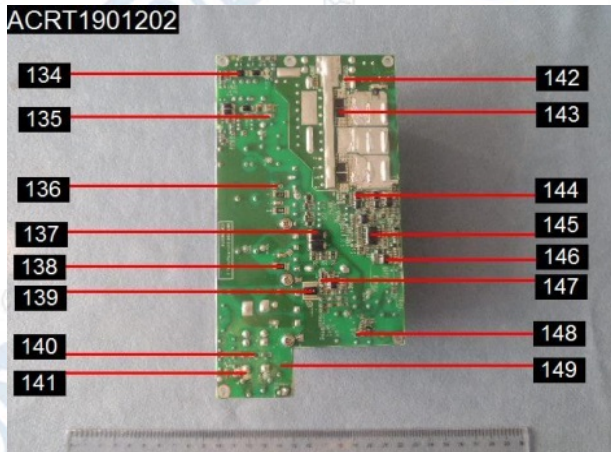
VERIFICATION REPORT



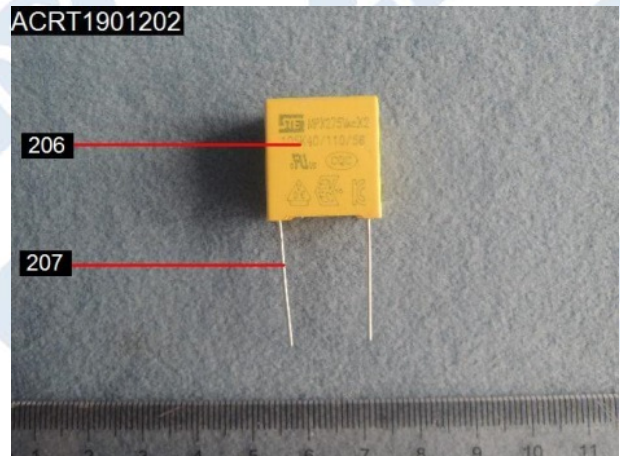
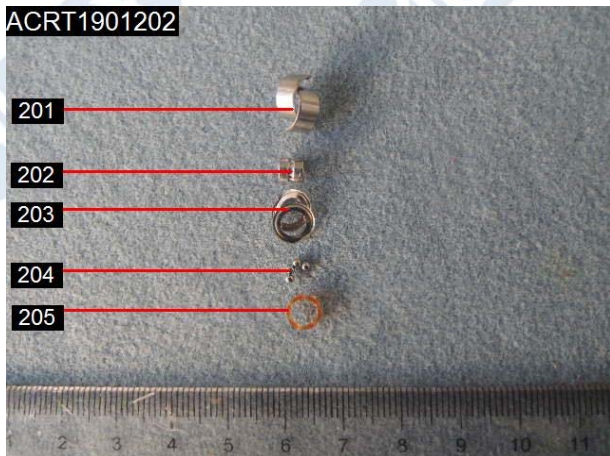
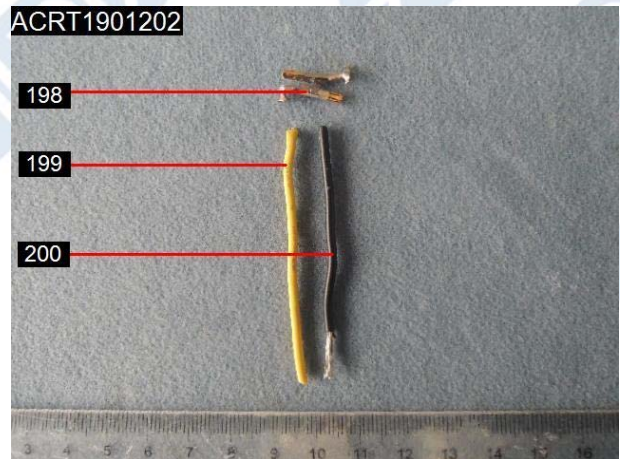
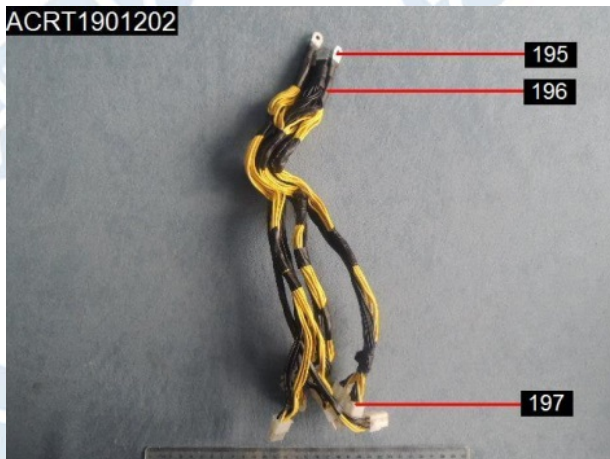
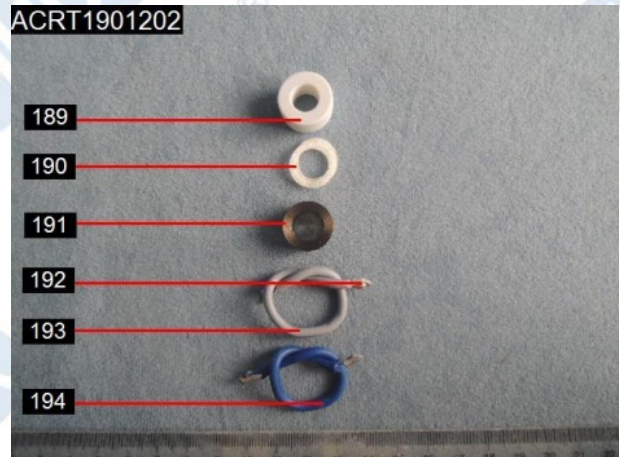
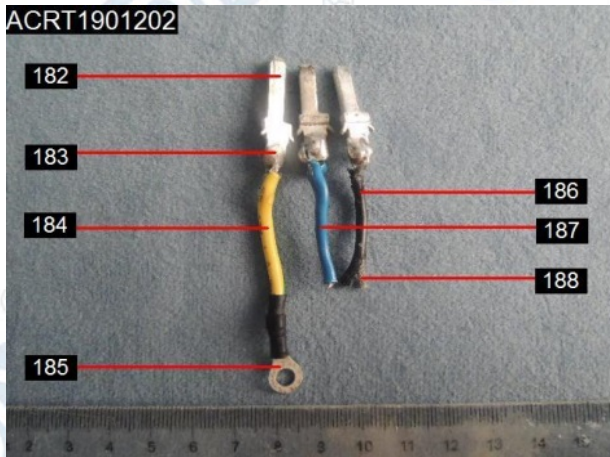
VERIFICATION REPORT



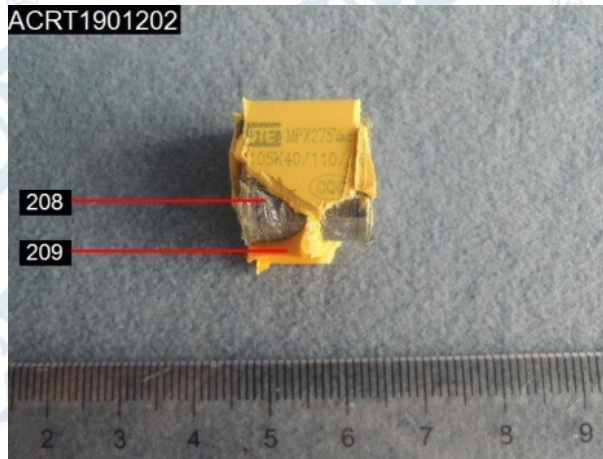
VERIFICATION REPORT



VERIFICATION REPORT

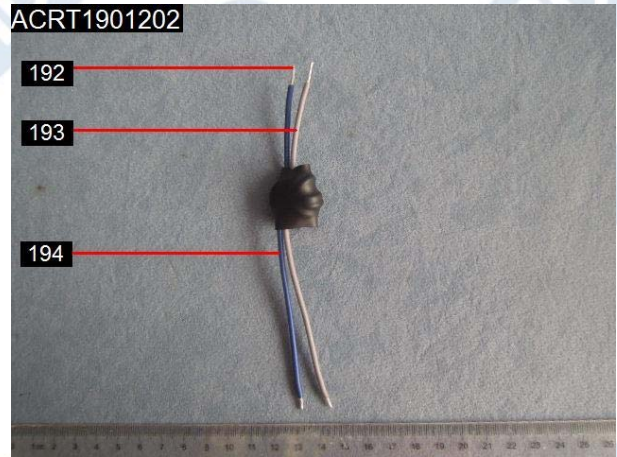
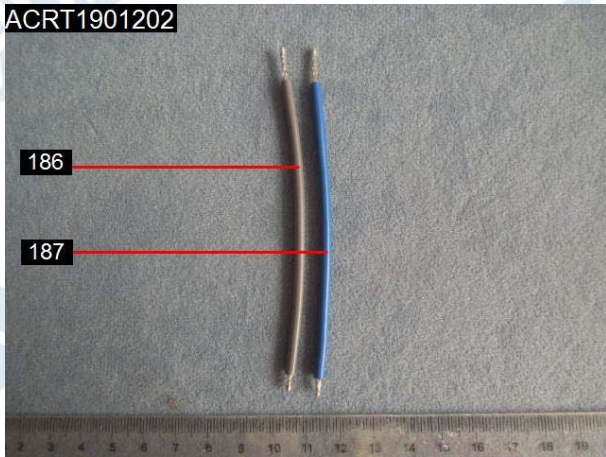
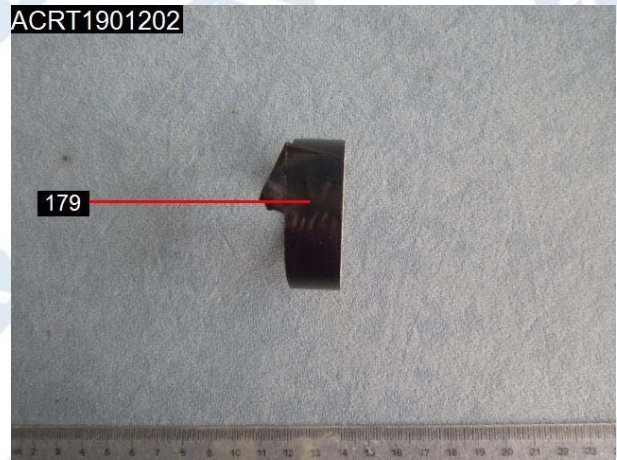
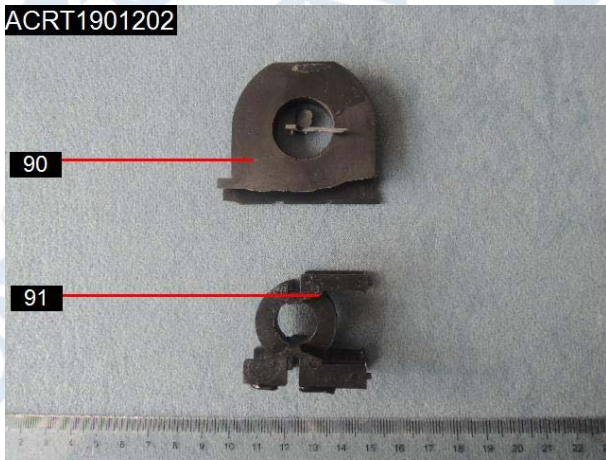


VERIFICATION REPORT



VERIFICATION REPORT

(III) Photo(s) of retest sample(s):



*** End of report ***