





VERIFICATION REPORT

Report No. : ACRT1904220
 Applicant : Shenzhen Century Cloud Core Technologies Limited
 Address : F1-F5, B1 Complex Building, Gangtuo Industrial Park, Yabian
 Community, Shajing Town, Baoan District, Shenzhen

Sample Name : SERVER
 Model No. : 120-K
 Date of sample received : Apr. 25, 2019
 Test period : Apr. 25, 2019 to May. 13, 2019
 Test request : As specified by client, Split the sample and determine the Lead,
 Cadmium, Mercury, Hexavalent Chromium, PBBs&PBDEs and
 Phthalates such as Bis(2-ethylhexyl) phthalate (DEHP), Butyl
 benzyl phthalate (BBP), Dibutyl phthalate (DBP), Dissobutyl
 phthalate (DIBP) content in the submitted samples.
 Test Method : Please refer to the following page(s).
 Test result : Please refer to the following page(s).
 Conclusion : When tested as specified, the results shown on the report did
 not exceed the required limit of EU RoHS Directive 2015/863
 amending Annex II to Directive 2011/65/EU.

Written by
 (Signature) 
 Reviewed by
 (Signature) 
 Approved by
 (Signature/Position) 
Technical Manager



深圳市信華檢測有限公司
 Shenzhen Xinhua Testing Measurement Co., Ltd.
 Stamp only for Report
 Signature: _____

Approved date : May. 13, 2019

Remark: The test result presented in this report relate only to the sample(s) tested.
 This report is considered invalidated without the Special Seal for Inspection of the testing laboratory. This
 report shall not be altered, increased or deleted.
 Without the written approval of the issuing testing laboratory, this report shall not be reproduced, duplicated,
 except in full, and published as advertisement

VERIFICATION REPORT

Test Results (Unit: mg/kg)

(1) To determine Lead, Cadmium, Mercury, Hexavalent Chromium, PBBs&PBDEs:

TESTED MATERIAL	SCHEME	TARGET RoHS SUBSTANCES	TEST METHOD USED	XRF RESULT (in mg/kg)	CHEMICAL TEST RESULT (in mg/kg)
1	1	All	XRF	Cd: N.D	N/T
				Cr: N.D	
				Pb: N.D	
				Hg: N.D	
				Br: N.D	
2	2	All	XRF	Cd: N.D	N/T
				Cr: N.D	
				Pb: N.D	
				Hg: N.D	
				Br: N.D	
3	3	All	XRF	Cd: N.D	N/T
				Cr: N.D	
				Pb: N.D	
				Hg: N.D	
				Br: N.D	
4	4	All	XRF + Chemical	Cd: N.D	Cr ⁶⁺ : Negative
				Cr: Inconclusive	
				Pb: N.D	
				Hg: N.D	
				Br: N.D	
5	5	All	XRF	Cd: N.D	N/T
				Cr: N.D	
				Pb: N.D	
				Hg: N.D	
				Br: N.D	
6	6	All	XRF	Cd: N.D	N/T
				Cr: N.D	
				Pb: N.D	
				Hg: N.D	
				Br: N.D	
7	7	All	XRF	Cd: N.D	N/T
				Cr: N.D	
				Pb: N.D	
				Hg: N.D	
				Br: N.D	
8	8	All	XRF	Cd: N.D	N/T
				Cr: N.D	
				Pb: N.D	
				Hg: N.D	
				Br: N.D	

VERIFICATION REPORT

TESTED MATERIAL	SCHEME	TARGET RoHS SUBSTANCES	TEST METHOD USED	XRF RESULT (in mg/kg)	CHEMICAL TEST RESULT (in mg/kg)
9	9	All	XRF + Chemical	Cd: N.D	Cr ⁶⁺ : Negative
				Cr: Inconclusive	
				Pb: N.D	
				Hg: N.D	
				Br: N.D	
10	10	All	XRF	Cd: N.D	N/T
				Cr: N.D	
				Pb: N.D	
				Hg: N.D	
				Br: N.D	
11	11	All	XRF	Cd: N.D	N/T
				Cr: N.D	
				Pb: N.D	
				Hg: N.D	
				Br: N.D	
12	12	All	XRF	Cd: N.D	N/T
				Cr: N.D	
				Pb: N.D	
				Hg: N.D	
				Br: N.D	
13	13	All	XRF	Cd: N.D	N/T
				Cr: N.D	
				Pb: N.D	
				Hg: N.D	
				Br: N.D	
14	14	All	XRF	Cd: N.D	N/T
				Cr: N.D	
				Pb: N.D	
				Hg: N.D	
				Br: N.D	
15	15	All	XRF	Cd: N.D	N/T
				Cr: N.D	
				Pb: N.D	
				Hg: N.D	
				Br: N.D	
16	16	All	XRF + Chemical	Cd: N.D	Cr ⁶⁺ : N.D(<8.0)
				Cr: Inconclusive	
				Pb: N.D	
				Hg: N.D	
				Br: N.D	
17	17	All	XRF	Cd: N.D	N/T
				Cr: N.D	
				Pb: N.D	
				Hg: N.D	
				Br: N.D	

VERIFICATION REPORT

TESTED MATERIAL	SCHEME	TARGET RoHS SUBSTANCES	TEST METHOD USED	XRF RESULT (in mg/kg)	CHEMICAL TEST RESULT (in mg/kg)
18	18	All	XRF + Chemical	Cd: N.D	Cr ⁶⁺ : N.D(<8.0)
				Cr: Inconclusive	
				Pb: N.D	
				Hg: N.D	
				Br: N.D	
19	19	All	XRF	Cd: N.D	N/T
				Cr: N.D	
				Pb: N.D	
				Hg: N.D	
				Br: N.D	
20	20	All	XRF	Cd: N.D	N/T
				Cr: N.D	
				Pb: N.D	
				Hg: N.D	
				Br: N.D	
21	21	All	XRF + Chemical	Cd: N.D	Cr ⁶⁺ : Negative
				Cr: Inconclusive	
				Pb: N.D	
				Hg: N.D	
				Br: N.D	
22	22	All	XRF + Chemical	Cd: N.D	Cr ⁶⁺ : Negative
				Cr: Inconclusive	
				Pb: N.D	
				Hg: N.D	
				Br: N.D	
23	23	All	XRF	Cd: N.D	N/T
				Cr: N.D	
				Pb: N.D	
				Hg: N.D	
				Br: N.D	
24	24	All	XRF	Cd: N.D	N/T
				Cr: N.D	
				Pb: N.D	
				Hg: N.D	
				Br: N.D	
25	25	All	XRF	Cd: N.D	N/T
				Cr: N.D	
				Pb: N.D	
				Hg: N.D	
				Br: N.D	
26	26	All	XRF	Cd: N.D	N/T
				Cr: N.D	
				Pb: N.D	
				Hg: N.D	
				Br: N.D	

VERIFICATION REPORT

TESTED MATERIAL	SCHEME	TARGET RoHS SUBSTANCES	TEST METHOD USED	XRF RESULT (in mg/kg)	CHEMICAL TEST RESULT (in mg/kg)
27	27	All	XRF	Cd: N.D	N/T
				Cr: N.D	
				Pb: N.D	
				Hg: N.D	
				Br: N.D	
28	28	All	XRF + Chemical	Cd: N.D	PBBs: N.D(<5.0) PBDEs: N.D(<5.0)
				Cr: N.D	
				Pb: N.D	
				Hg: N.D	
				Br: Inconclusive	
29	29	All	XRF	Cd: N.D	N/T
				Cr: N.D	
				Pb: N.D	
				Hg: N.D	
				Br: N.D	
30	30	All	XRF	Cd: N.D	N/T
				Cr: N.D	
				Pb: N.D	
				Hg: N.D	
				Br: N.D	
31	31	All	XRF	Cd: N.D	N/T
				Cr: N.D	
				Pb: N.D	
				Hg: N.D	
				Br: N.D	
32	32	All	XRF	Cd: N.D	N/T
				Cr: N.D	
				Pb: N.D	
				Hg: N.D	
				Br: N.D	
33	33	All	XRF + Chemical	Cd: N.D	PBBs: N.D(<5.0) PBDEs: N.D(<5.0)
				Cr: N.D	
				Pb: N.D	
				Hg: N.D	
				Br: Inconclusive	
34	34	All	XRF + Chemical	Cd: N.D	PBBs: N.D(<5.0) PBDEs: N.D(<5.0)
				Cr: N.D	
				Pb: N.D	
				Hg: N.D	
				Br: Inconclusive	
35	35	All	XRF	Cd: N.D	N/T
				Cr: N.D	
				Pb: N.D	
				Hg: N.D	
				Br: N.D	

VERIFICATION REPORT

TESTED MATERIAL	SCHEME	TARGET RoHS SUBSTANCES	TEST METHOD USED	XRF RESULT (in mg/kg)	CHEMICAL TEST RESULT (in mg/kg)
36	36	All	XRF	Cd: N.D	N/T
				Cr: N.D	
				Pb: N.D	
				Hg: N.D	
				Br: N.D	
37	37	All	XRF	Cd: N.D	N/T
				Cr: N.D	
				Pb: N.D	
				Hg: N.D	
				Br: N.D	
38	38	All	XRF	Cd: N.D	N/T
				Cr: N.D	
				Pb: N.D	
				Hg: N.D	
				Br: N.D	
39	39	All	XRF + Chemical	Cd: N.D	Cr ⁶⁺ : Negative
				Cr: Inconclusive	
				Pb: N.D	
				Hg: N.D	
				Br: N.D	
40	40	All	XRF	Cd: N.D	N/T
				Cr: N.D	
				Pb: N.D	
				Hg: N.D	
				Br: N.D	
41	41	All	XRF	Cd: N.D	N/T
				Cr: N.D	
				Pb: N.D	
				Hg: N.D	
				Br: N.D	
42	42	All	XRF	Cd: N.D	N/T
				Cr: N.D	
				Pb: N.D	
				Hg: N.D	
				Br: N.D	
43	43	All	XRF + Chemical	Cd: N.D	PBBs: N.D(<5.0) PBDEs: N.D(<5.0)
				Cr: N.D	
				Pb: N.D	
				Hg: N.D	
				Br: Inconclusive	
44	44	All	XRF	Cd: N.D	N/T
				Cr: N.D	
				Pb: N.D	
				Hg: N.D	
				Br: N.D	

VERIFICATION REPORT

TESTED MATERIAL	SCHEME	TARGET RoHS SUBSTANCES	TEST METHOD USED	XRF RESULT (in mg/kg)	CHEMICAL TEST RESULT (in mg/kg)
45	45	All	XRF + Chemical	Cd: N.D	PBBs: N.D(<5.0) PBDEs: N.D(<5.0)
				Cr: N.D	
				Pb: N.D	
				Hg: N.D	
				Br: Inconclusive	
46	46	All	XRF	Cd: N.D	N/T
				Cr: N.D	
				Pb: N.D	
				Hg: N.D	
				Br: N.D	
47	47	All	XRF + Chemical	Cd: N.D	PBBs: N.D(<5.0) PBDEs: N.D(<5.0)
				Cr: N.D	
				Pb: N.D	
				Hg: N.D	
				Br: Inconclusive	
48	48	All	XRF	Cd: N.D	N/T
				Cr: N.D	
				Pb: N.D	
				Hg: N.D	
				Br: N.D	
49	49	All	XRF + Chemical	Cd: N.D	PBBs: N.D(<5.0) PBDEs: N.D(<5.0)
				Cr: N.D	
				Pb: N.D	
				Hg: N.D	
				Br: Inconclusive	
50	50	All	XRF	Cd: N.D	N/T
				Cr: N.D	
				Pb: N.D	
				Hg: N.D	
				Br: N.D	
51	51	All	XRF	Cd: N.D	N/T
				Cr: N.D	
				Pb: N.D	
				Hg: N.D	
				Br: N.D	
52	52	All	XRF	Cd: N.D	N/T
				Cr: N.D	
				Pb: N.D	
				Hg: N.D	
				Br: N.D	
53	53	All	XRF	Cd: N.D	N/T
				Cr: N.D	
				Pb: N.D	
				Hg: N.D	
				Br: N.D	

VERIFICATION REPORT

TESTED MATERIAL	SCHEME	TARGET RoHS SUBSTANCES	TEST METHOD USED	XRF RESULT (in mg/kg)	CHEMICAL TEST RESULT (in mg/kg)
54	54	All	XRF	Cd: N.D	N/T
				Cr: N.D	
				Pb: N.D	
				Hg: N.D	
				Br: N.D	
55	55	All	XRF	Cd: N.D	N/T
				Cr: N.D	
				Pb: N.D	
				Hg: N.D	
				Br: N.D	
56	56	All	XRF	Cd: N.D	N/T
				Cr: N.D	
				Pb: N.D	
				Hg: N.D	
				Br: N.D	
57	57	All	XRF	Cd: N.D	N/T
				Cr: N.D	
				Pb: N.D	
				Hg: N.D	
				Br: N.D	
58	58	All	XRF	Cd: N.D	N/T
				Cr: N.D	
				Pb: N.D	
				Hg: N.D	
				Br: N.D	
59	59	All	XRF	Cd: N.D	N/T
				Cr: N.D	
				Pb: N.D	
				Hg: N.D	
				Br: N.D	
60	60	All	XRF	Cd: N.D	N/T
				Cr: N.D	
				Pb: N.D	
				Hg: N.D	
				Br: N.D	
61	61	All	XRF	Cd: N.D	N/T
				Cr: N.D	
				Pb: N.D	
				Hg: N.D	
				Br: N.D	
62	62	All	XRF	Cd: N.D	N/T
				Cr: N.D	
				Pb: N.D	
				Hg: N.D	
				Br: N.D	

VERIFICATION REPORT

TESTED MATERIAL	SCHEME	TARGET RoHS SUBSTANCES	TEST METHOD USED	XRF RESULT (in mg/kg)	CHEMICAL TEST RESULT (in mg/kg)
63	63	All	XRF	Cd: N.D	N/T
				Cr: N.D	
				Pb: N.D	
				Hg: N.D	
				Br: N.D	
64	64	All	XRF	Cd: N.D	N/T
				Cr: N.D	
				Pb: N.D	
				Hg: N.D	
				Br: N.D	
65	65	All	XRF + Chemical	Cd: N.D	Cr ⁶⁺ : N.D(<8.0)
				Cr: Inconclusive	
				Pb: N.D	
				Hg: N.D	
				Br: N.D	
66	66	All	XRF	Cd: N.D	N/T
				Cr: N.D	
				Pb: N.D	
				Hg: N.D	
				Br: N.D	
67	67	All	XRF	Cd: N.D	N/T
				Cr: N.D	
				Pb: N.D	
				Hg: N.D	
				Br: N.D	
68	68	All	XRF + Chemical	Cd: N.D	PBBs: N.D(<5.0) PBDEs: N.D(<5.0)
				Cr: N.D	
				Pb: N.D	
				Hg: N.D	
				Br: Inconclusive	
69	69	All	XRF	Cd: N.D	N/T
				Cr: N.D	
				Pb: N.D	
				Hg: N.D	
				Br: N.D	
70	70	All	XRF	Cd: N.D	N/T
				Cr: N.D	
				Pb: N.D	
				Hg: N.D	
				Br: N.D	
71	71	All	XRF + Chemical	Cd: N.D	PBBs: N.D(<5.0) PBDEs: N.D(<5.0)
				Cr: N.D	
				Pb: N.D	
				Hg: N.D	
				Br: Inconclusive	

VERIFICATION REPORT

TESTED MATERIAL	SCHEME	TARGET RoHS SUBSTANCES	TEST METHOD USED	XRF RESULT (in mg/kg)	CHEMICAL TEST RESULT (in mg/kg)
72	72	All	XRF	Cd: N.D	N/T
				Cr: N.D	
				Pb: N.D	
				Hg: N.D	
				Br: N.D	
73	73	All	XRF + Chemical	Cd: N.D	PBBs: N.D(<5.0) PBDEs: N.D(<5.0)
				Cr: N.D	
				Pb: N.D	
				Hg: N.D	
				Br: Inconclusive	
74	74	All	XRF + Chemical	Cd: N.D	Cr ⁶⁺ : Negative
				Cr: Inconclusive	
				Pb: N.D	
				Hg: N.D	
				Br: N.D	
75	75	All	XRF + Chemical	Cd: N.D	Cr ⁶⁺ : Negative
				Cr: Inconclusive	
				Pb: N.D	
				Hg: N.D	
				Br: N.D	
76	76	All	XRF	Cd: N.D	N/T
				Cr: N.D	
				Pb: N.D	
				Hg: N.D	
				Br: N.D	
77	77	All	XRF	Cd: N.D	N/T
				Cr: N.D	
				Pb: N.D	
				Hg: N.D	
				Br: N.D	
78	78	All	XRF	Cd: N.D	N/T
				Cr: N.D	
				Pb: N.D	
				Hg: N.D	
				Br: N.D	
79	79	All	XRF	Cd: N.D	N/T
				Cr: N.D	
				Pb: N.D	
				Hg: N.D	
				Br: N.D	
80	80	All	XRF	Cd: N.D	N/T
				Cr: N.D	
				Pb: N.D	
				Hg: N.D	
				Br: N.D	

VERIFICATION REPORT

TESTED MATERIAL	SCHEME	TARGET RoHS SUBSTANCES	TEST METHOD USED	XRF RESULT (in mg/kg)	CHEMICAL TEST RESULT (in mg/kg)
81	81	All	XRF	Cd: N.D	N/T
				Cr: N.D	
				Pb: N.D	
				Hg: N.D	
				Br: N.D	
82	82	All	XRF	Cd: N.D	N/T
				Cr: N.D	
				Pb: N.D	
				Hg: N.D	
				Br: N.D	
83	83	All	XRF	Cd: N.D	N/T
				Cr: N.D	
				Pb: (3.1×10 ⁴)*	
				Hg: N.D	
				Br: N.D	
84	84	All	XRF	Cd: N.D	N/T
				Cr: N.D	
				Pb: N.D	
				Hg: N.D	
				Br: N.D	
85	85	All	XRF	Cd: N.D	N/T
				Cr: N.D	
				Pb: N.D	
				Hg: N.D	
				Br: N.D	
86	86	All	XRF + Chemical	Cd: N.D	PBBs: N.D(<5.0) PBDEs: N.D(<5.0)
				Cr: N.D	
				Pb: N.D	
				Hg: N.D	
				Br: Inconclusive	
87	87	All	XRF	Cd: N.D	N/T
				Cr: N.D	
				Pb: N.D	
				Hg: N.D	
				Br: N.D	
88	88	All	XRF	Cd: N.D	N/T
				Cr: N.D	
				Pb: N.D	
				Hg: N.D	
				Br: N.D	
89	89	All	XRF	Cd: N.D	N/T
				Cr: N.D	
				Pb: N.D	
				Hg: N.D	
				Br: N.D	

VERIFICATION REPORT

TESTED MATERIAL	SCHEME	TARGET RoHS SUBSTANCES	TEST METHOD USED	XRF RESULT (in mg/kg)	CHEMICAL TEST RESULT (in mg/kg)
90	90	All	XRF + Chemical	Cd: N.D	PBBs: N.D(<5.0) PBDEs: N.D(<5.0)
				Cr: N.D	
				Pb: N.D	
				Hg: N.D	
				Br: Inconclusive	
91	91	All	XRF	Cd: N.D	N/T
				Cr: N.D	
				Pb: N.D	
				Hg: N.D	
				Br: N.D	
92	92	All	XRF	Cd: N.D	N/T
				Cr: N.D	
				Pb: N.D	
				Hg: N.D	
				Br: N.D	
93	93	All	XRF + Chemical	Cd: N.D	Cr ⁶⁺ : Negative
				Cr: Inconclusive	
				Pb: N.D	
				Hg: N.D	
				Br: N.D	
94	94	All	XRF	Cd: N.D	N/T
				Cr: N.D	
				Pb: N.D	
				Hg: N.D	
				Br: N.D	
95	95	All	XRF + Chemical	Cd: N.D	Cr ⁶⁺ : Negative
				Cr: Inconclusive	
				Pb: N.D	
				Hg: N.D	
				Br: N.D	
96	96	All	XRF + Chemical	Cd: N.D	Cr ⁶⁺ : Negative
				Cr: Inconclusive	
				Pb: N.D	
				Hg: N.D	
				Br: N.D	
97	97	All	XRF	Cd: N.D	N/T
				Cr: N.D	
				Pb: N.D	
				Hg: N.D	
				Br: N.D	
98	98	All	XRF + Chemical	Cd: N.D	PBBs: N.D(<5.0) PBDEs: N.D(<5.0)
				Cr: N.D	
				Pb: N.D	
				Hg: N.D	
				Br: Inconclusive	

VERIFICATION REPORT

TESTED MATERIAL	SCHEME	TARGET RoHS SUBSTANCES	TEST METHOD USED	XRF RESULT (in mg/kg)	CHEMICAL TEST RESULT (in mg/kg)
99	99	All	XRF	Cd: N.D	N/T
				Cr: N.D	
				Pb: N.D	
				Hg: N.D	
				Br: N.D	
100	100	All	XRF + Chemical	Cd: N.D	Cr ⁶⁺ : Negative
				Cr: Inconclusive	
				Pb: N.D	
				Hg: N.D	
				Br: N.D	
101	101	All	XRF + Chemical	Cd: N.D	Cr ⁶⁺ : Negative
				Cr: Inconclusive	
				Pb: N.D	
				Hg: N.D	
				Br: N.D	
102	102	All	XRF	Cd: N.D	N/T
				Cr: N.D	
				Pb: N.D	
				Hg: N.D	
				Br: N.D	
103	103	All	XRF + Chemical	Cd: N.D	Cr ⁶⁺ : Negative
				Cr: Inconclusive	
				Pb: N.D	
				Hg: N.D	
				Br: N.D	
104	104	All	XRF + Chemical	Cd: N.D	Cr ⁶⁺ : Negative
				Cr: Inconclusive	
				Pb: N.D	
				Hg: N.D	
				Br: N.D	
105	105	All	XRF + Chemical	Cd: N.D	Cr ⁶⁺ : Negative
				Cr: Inconclusive	
				Pb: N.D	
				Hg: N.D	
				Br: N.D	
106	106	All	XRF + Chemical	Cd: N.D	Cr ⁶⁺ : Negative
				Cr: Inconclusive	
				Pb: N.D	
				Hg: N.D	
				Br: N.D	
107	107	All	XRF	Cd: N.D	N/T
				Cr: N.D	
				Pb: N.D	
				Hg: N.D	
				Br: N.D	

VERIFICATION REPORT

TESTED MATERIAL	SCHEME	TARGET RoHS SUBSTANCES	TEST METHOD USED	XRF RESULT (in mg/kg)	CHEMICAL TEST RESULT (in mg/kg)
108	108	All	XRF	Cd: N.D	N/T
				Cr: N.D	
				Pb: N.D	
				Hg: N.D	
				Br: N.D	
109	109	All	XRF + Chemical	Cd: N.D	PBBs: N.D(<5.0) PBDEs: N.D(<5.0)
				Cr: N.D	
				Pb: N.D	
				Hg: N.D	
				Br: Inconclusive	
110	110	All	XRF	Cd: N.D	N/T
				Cr: N.D	
				Pb: N.D	
				Hg: N.D	
				Br: N.D	
111	111	All	XRF + Chemical	Cd: N.D	PBBs: N.D(<5.0) PBDEs: N.D(<5.0)
				Cr: N.D	
				Pb: N.D	
				Hg: N.D	
				Br: Inconclusive	
112	112	All	XRF	Cd: N.D	N/T
				Cr: N.D	
				Pb: N.D	
				Hg: N.D	
				Br: N.D	
113	113	All	XRF	Cd: N.D	N/T
				Cr: N.D	
				Pb: N.D	
				Hg: N.D	
				Br: N.D	
114	114	All	XRF	Cd: N.D	N/T
				Cr: N.D	
				Pb: N.D	
				Hg: N.D	
				Br: N.D	
115	115	All	XRF	Cd: N.D	N/T
				Cr: N.D	
				Pb: N.D	
				Hg: N.D	
				Br: N.D	
116	116	All	XRF	Cd: N.D	N/T
				Cr: N.D	
				Pb: N.D	
				Hg: N.D	
				Br: N.D	

VERIFICATION REPORT

TESTED MATERIAL	SCHEME	TARGET RoHS SUBSTANCES	TEST METHOD USED	XRF RESULT (in mg/kg)	CHEMICAL TEST RESULT (in mg/kg)
117	117	All	XRF	Cd: N.D	N/T
				Cr: N.D	
				Pb: N.D	
				Hg: N.D	
				Br: N.D	
118	118	All	XRF + Chemical	Cd: N.D	PBBs: N.D(<5.0) PBDEs: N.D(<5.0)
				Cr: N.D	
				Pb: N.D	
				Hg: N.D	
				Br: Inconclusive	
119	119	All	XRF	Cd: N.D	N/T
				Cr: N.D	
				Pb: N.D	
				Hg: N.D	
				Br: N.D	
120	120	All	XRF	Cd: N.D	N/T
				Cr: N.D	
				Pb: N.D	
				Hg: N.D	
				Br: N.D	
121	121	All	XRF	Cd: N.D	N/T
				Cr: N.D	
				Pb: N.D	
				Hg: N.D	
				Br: N.D	
122	122	All	XRF	Cd: N.D	N/T
				Cr: N.D	
				Pb: N.D	
				Hg: N.D	
				Br: N.D	
123	123	All	XRF	Cd: N.D	N/T
				Cr: N.D	
				Pb: N.D	
				Hg: N.D	
				Br: N.D	
124	124	All	XRF	Cd: N.D	N/T
				Cr: N.D	
				Pb: N.D	
				Hg: N.D	
				Br: N.D	
125	125	All	XRF + Chemical	Cd: N.D	PBBs: N.D(<5.0) PBDEs: N.D(<5.0)
				Cr: N.D	
				Pb: N.D	
				Hg: N.D	
				Br: Inconclusive	

VERIFICATION REPORT

TESTED MATERIAL	SCHEME	TARGET RoHS SUBSTANCES	TEST METHOD USED	XRF RESULT (in mg/kg)	CHEMICAL TEST RESULT (in mg/kg)
126	126	All	XRF	Cd: N.D	N/T
				Cr: N.D	
				Pb: N.D	
				Hg: N.D	
				Br: N.D	
127	127	All	XRF + Chemical	Cd: N.D	Cr ⁶⁺ : N.D(<8.0) Pb: N.D(<2.0)
				Cr: Inconclusive	
				Pb: Inconclusive	
				Hg: N.D	
				Br: N.D	
128	128	All	XRF	Cd: N.D	N/T
				Cr: N.D	
				Pb: N.D	
				Hg: N.D	
				Br: N.D	
129	129	All	XRF	Cd: N.D	N/T
				Cr: N.D	
				Pb: N.D	
				Hg: N.D	
				Br: N.D	
130	130	All	XRF	Cd: N.D	N/T
				Cr: N.D	
				Pb: N.D	
				Hg: N.D	
				Br: N.D	
131	131	All	XRF	Cd: N.D	N/T
				Cr: N.D	
				Pb: N.D	
				Hg: N.D	
				Br: N.D	
132	132	All	XRF	Cd: N.D	N/T
				Cr: N.D	
				Pb: N.D	
				Hg: N.D	
				Br: N.D	
133	133	All	XRF	Cd: N.D	N/T
				Cr: N.D	
				Pb: N.D	
				Hg: N.D	
				Br: N.D	
134	134	All	XRF	Cd: N.D	N/T
				Cr: N.D	
				Pb: N.D	
				Hg: N.D	
				Br: N.D	

VERIFICATION REPORT

TESTED MATERIAL	SCHEME	TARGET RoHS SUBSTANCES	TEST METHOD USED	XRF RESULT (in mg/kg)	CHEMICAL TEST RESULT (in mg/kg)
135	135	All	XRF	Cd: N.D	N/T
				Cr: N.D	
				Pb: N.D	
				Hg: N.D	
				Br: N.D	
136	136	All	XRF + Chemical	Cd: N.D	Cr ⁶⁺ : Negative
				Cr: Inconclusive	
				Pb: N.D	
				Hg: N.D	
				Br: N.D	
137	137	All	XRF + Chemical	Cd: N.D	Cr ⁶⁺ : Negative
				Cr: Inconclusive	
				Pb: N.D	
				Hg: N.D	
				Br: N.D	
138	138	All	XRF + Chemical	Cd: N.D	Cr ⁶⁺ : Negative
				Cr: Inconclusive	
				Pb: N.D	
				Hg: N.D	
				Br: N.D	
139	139	All	XRF + Chemical	Cd: N.D	Cr ⁶⁺ : Negative
				Cr: Inconclusive	
				Pb: N.D	
				Hg: N.D	
				Br: N.D	
140	140	All	XRF + Chemical	Cd: Inconclusive	Cd: N.D(<2.0) Pb:(3.8×10 ⁴)#
				Cr: N.D	
				Pb: Inconclusive	
				Hg: N.D	
				Br: N.D	
141	141	All	XRF + Chemical	Cd: Inconclusive	Cd: N.D(<2.0) Pb:(2.1×10 ⁴)#
				Cr: N.D	
				Pb: Inconclusive	
				Hg: N.D	
				Br: N.D	
142	142	All	XRF	Cd: N.D	N/T
				Cr: N.D	
				Pb: N.D	
				Hg: N.D	
				Br: N.D	
143	143	All	XRF + Chemical	Cd: N.D	PBBs: N.D(<5.0) PBDEs: N.D(<5.0)
				Cr: N.D	
				Pb: N.D	
				Hg: N.D	
				Br: Inconclusive	

VERIFICATION REPORT

TESTED MATERIAL	SCHEME	TARGET RoHS SUBSTANCES	TEST METHOD USED	XRF RESULT (in mg/kg)	CHEMICAL TEST RESULT (in mg/kg)
144	144	All	XRF + Chemical	Cd: N.D	PBBs: N.D(<5.0) PBDEs: N.D(<5.0)
				Cr: N.D	
				Pb: N.D	
				Hg: N.D	
				Br: Inconclusive	
145	145	All	XRF	Cd: N.D	N/T
				Cr: N.D	
				Pb: N.D	
				Hg: N.D	
				Br: N.D	
146	146	All	XRF	Cd: N.D	N/T
				Cr: N.D	
				Pb: N.D	
				Hg: N.D	
				Br: N.D	
147	147	All	XRF + Chemical	Cd: N.D	Cr ⁶⁺ : Negative
				Cr: Inconclusive	
				Pb: N.D	
				Hg: N.D	
				Br: N.D	
148	148	All	XRF + Chemical	Cd: N.D	Cr ⁶⁺ : Negative
				Cr: Inconclusive	
				Pb: N.D	
				Hg: N.D	
				Br: N.D	
149	149	All	XRF + Chemical	Cd: N.D	Cr ⁶⁺ : Negative
				Cr: Inconclusive	
				Pb: N.D	
				Hg: N.D	
				Br: N.D	
150	150	All	XRF + Chemical	Cd: N.D	Cr ⁶⁺ : Negative
				Cr: Inconclusive	
				Pb: N.D	
				Hg: N.D	
				Br: N.D	
151	151	All	XRF + Chemical	Cd: N.D	Cr ⁶⁺ : Negative
				Cr: Inconclusive	
				Pb: N.D	
				Hg: N.D	
				Br: N.D	
152	152	All	XRF	Cd: N.D	N/T
				Cr: N.D	
				Pb: N.D	
				Hg: N.D	
				Br: N.D	

VERIFICATION REPORT

TESTED MATERIAL	SCHEME	TARGET RoHS SUBSTANCES	TEST METHOD USED	XRF RESULT (in mg/kg)	CHEMICAL TEST RESULT (in mg/kg)
153	153	All	XRF	Cd: N.D	N/T
				Cr: N.D	
				Pb: N.D	
				Hg: N.D	
				Br: N.D	
154	154	All	XRF	Cd: N.D	N/T
				Cr: N.D	
				Pb: N.D	
				Hg: N.D	
				Br: N.D	
155	155	All	XRF	Cd: N.D	N/T
				Cr: N.D	
				Pb: N.D	
				Hg: N.D	
				Br: N.D	
156	156	All	XRF	Cd: N.D	N/T
				Cr: N.D	
				Pb: N.D	
				Hg: N.D	
				Br: N.D	
157	157	All	XRF	Cd: N.D	N/T
				Cr: N.D	
				Pb: N.D	
				Hg: N.D	
				Br: N.D	
158	158	All	XRF	Cd: N.D	N/T
				Cr: N.D	
				Pb: N.D	
				Hg: N.D	
				Br: N.D	
159	159	All	XRF	Cd: N.D	N/T
				Cr: N.D	
				Pb: N.D	
				Hg: N.D	
				Br: N.D	
160	160	All	XRF + Chemical	Cd: N.D	Cr ⁶⁺ : N.D(<8.0)
				Cr: Inconclusive	
				Pb: N.D	
				Hg: N.D	
				Br: N.D	
161	161	All	XRF	Cd: N.D	N/T
				Cr: N.D	
				Pb: N.D	
				Hg: N.D	
				Br: N.D	

VERIFICATION REPORT

TESTED MATERIAL	SCHEME	TARGET RoHS SUBSTANCES	TEST METHOD USED	XRF RESULT (in mg/kg)	CHEMICAL TEST RESULT (in mg/kg)
162	162	All	XRF	Cd: N.D	N/T
				Cr: N.D	
				Pb: N.D	
				Hg: N.D	
				Br: N.D	
163	163	All	XRF	Cd: N.D	N/T
				Cr: N.D	
				Pb: N.D	
				Hg: N.D	
				Br: N.D	
164	164	All	XRF	Cd: N.D	N/T
				Cr: N.D	
				Pb: N.D	
				Hg: N.D	
				Br: N.D	
165	165	All	XRF	Cd: N.D	N/T
				Cr: N.D	
				Pb: N.D	
				Hg: N.D	
				Br: N.D	
166	166	All	XRF	Cd: N.D	N/T
				Cr: N.D	
				Pb: N.D	
				Hg: N.D	
				Br: N.D	
167	167	All	XRF	Cd: N.D	N/T
				Cr: N.D	
				Pb: N.D	
				Hg: N.D	
				Br: N.D	
168	168	All	XRF	Cd: N.D	N/T
				Cr: N.D	
				Pb: N.D	
				Hg: N.D	
				Br: N.D	
169	169	All	XRF	Cd: N.D	N/T
				Cr: N.D	
				Pb: N.D	
				Hg: N.D	
				Br: N.D	
170	170	All	XRF	Cd: N.D	N/T
				Cr: N.D	
				Pb: N.D	
				Hg: N.D	
				Br: N.D	

VERIFICATION REPORT

TESTED MATERIAL	SCHEME	TARGET RoHS SUBSTANCES	TEST METHOD USED	XRF RESULT (in mg/kg)	CHEMICAL TEST RESULT (in mg/kg)
171	171	All	XRF	Cd: N.D	N/T
				Cr: N.D	
				Pb: N.D	
				Hg: N.D	
				Br: N.D	
172	172	All	XRF	Cd: N.D	N/T
				Cr: N.D	
				Pb: N.D	
				Hg: N.D	
				Br: N.D	
173	173	All	XRF	Cd: N.D	N/T
				Cr: N.D	
				Pb: N.D	
				Hg: N.D	
				Br: N.D	
174	174	All	XRF	Cd: N.D	N/T
				Cr: N.D	
				Pb: N.D	
				Hg: N.D	
				Br: N.D	
175	175	All	XRF + Chemical	Cd: N.D	PBBs: N.D(<5.0) PBDEs: N.D(<5.0)
				Cr: N.D	
				Pb: N.D	
				Hg: N.D	
				Br: Inconclusive	
176	176	All	XRF	Cd: N.D	N/T
				Cr: N.D	
				Pb: N.D	
				Hg: N.D	
				Br: N.D	
177	177	All	XRF	Cd: N.D	N/T
				Cr: N.D	
				Pb: N.D	
				Hg: N.D	
				Br: N.D	
178	178	All	XRF	Cd: N.D	N/T
				Cr: N.D	
				Pb: N.D	
				Hg: N.D	
				Br: N.D	
179	179	All	XRF	Cd: N.D	N/T
				Cr: N.D	
				Pb: N.D	
				Hg: N.D	
				Br: N.D	

VERIFICATION REPORT

TESTED MATERIAL	SCHEME	TARGET RoHS SUBSTANCES	TEST METHOD USED	XRF RESULT (in mg/kg)	CHEMICAL TEST RESULT (in mg/kg)
180	180	All	XRF	Cd: N.D	N/T
				Cr: N.D	
				Pb: N.D	
				Hg: N.D	
				Br: N.D	
181	181	All	XRF	Cd: N.D	N/T
				Cr: N.D	
				Pb: N.D	
				Hg: N.D	
				Br: N.D	
182	182	All	XRF + Chemical	Cd: N.D	Cr ⁶⁺ : N.D(<8.0)
				Cr: Inconclusive	
				Pb: N.D	
				Hg: N.D	
				Br: N.D	
183	183	All	XRF	Cd: N.D	N/T
				Cr: N.D	
				Pb: N.D	
				Hg: N.D	
				Br: N.D	
184	184	All	XRF	Cd: N.D	N/T
				Cr: N.D	
				Pb: N.D	
				Hg: N.D	
				Br: N.D	
185	185	All	XRF	Cd: N.D	N/T
				Cr: N.D	
				Pb: N.D	
				Hg: N.D	
				Br: N.D	
186	186	All	XRF + Chemical	Cd: N.D	PBBs: N.D(<5.0) PBDEs: N.D(<5.0)
				Cr: N.D	
				Pb: N.D	
				Hg: N.D	
				Br: Inconclusive	
187	187	All	XRF	Cd: N.D	N/T
				Cr: N.D	
				Pb: N.D	
				Hg: N.D	
				Br: N.D	
188	188	All	XRF + Chemical	Cd: N.D	Cr ⁶⁺ : N.D(<8.0)
				Cr: Inconclusive	
				Pb: N.D	
				Hg: N.D	
				Br: N.D	

VERIFICATION REPORT

TESTED MATERIAL	SCHEME	TARGET RoHS SUBSTANCES	TEST METHOD USED	XRF RESULT (in mg/kg)	CHEMICAL TEST RESULT (in mg/kg)
189	189	All	XRF + Chemical	Cd: N.D	Cr ⁶⁺ : N.D(<8.0)
				Cr: Inconclusive	
				Pb: N.D	
				Hg: N.D	
				Br: N.D	
190	190	All	XRF	Cd: N.D	N/T
				Cr: N.D	
				Pb: N.D	
				Hg: N.D	
				Br: N.D	
191	191	All	XRF + Chemical	Cd: N.D	Cr ⁶⁺ : N.D(<8.0) Pb: N.D(<2.0)
				Cr: Inconclusive	
				Pb: Inconclusive	
				Hg: N.D	
				Br: N.D	
192	192	All	XRF + Chemical	Cd: N.D	PBBs: N.D(<5.0) PBDEs: N.D(<5.0)
				Cr: N.D	
				Pb: N.D	
				Hg: N.D	
				Br: Inconclusive	
193	193	All	XRF	Cd: N.D	N/T
				Cr: N.D	
				Pb: N.D	
				Hg: N.D	
				Br: N.D	
194	194	All	XRF	Cd: N.D	N/T
				Cr: N.D	
				Pb: N.D	
				Hg: N.D	
				Br: N.D	
195	195	All	XRF	Cd: N.D	N/T
				Cr: N.D	
				Pb: N.D	
				Hg: N.D	
				Br: N.D	
196	196	All	XRF	Cd: N.D	N/T
				Cr: N.D	
				Pb: N.D	
				Hg: N.D	
				Br: N.D	
197	197	All	XRF	Cd: N.D	N/T
				Cr: N.D	
				Pb: N.D	
				Hg: N.D	
				Br: N.D	

VERIFICATION REPORT

TESTED MATERIAL	SCHEME	TARGET RoHS SUBSTANCES	TEST METHOD USED	XRF RESULT (in mg/kg)	CHEMICAL TEST RESULT (in mg/kg)
198	198	All	XRF	Cd: N.D	N/T
				Cr: N.D	
				Pb: N.D	
				Hg: N.D	
				Br: N.D	
199	199	All	XRF	Cd: N.D	N/T
				Cr: N.D	
				Pb: N.D	
				Hg: N.D	
				Br: N.D	
200	200	All	XRF	Cd: N.D	N/T
				Cr: N.D	
				Pb: N.D	
				Hg: N.D	
				Br: N.D	

Remark: in the following pages in this report:

- RL = Reporting Limits
- N.D = Not Detected (<RL)
- MDL = Method Detection Limit
- Mg/kg = parts per million = ppm
- N/T = Not tested
- Negative = Absence of Cr⁶⁺ coating

- As claimed by the information submitted by the supplier of applicant.

- *: The lead content of components (83) is coming from a glass or ceramic other than dielectric ceramic in capacitors, e.g. piezoelectronic devices, or in a glass or ceramic matrix compound in electrical and electronic components. According to EU RoHS recast directive (2011/65/EU), electrical and electronic components containing lead in a glass or ceramic other than dielectric ceramic in capacitors, e.g. piezoelectronic devices, or in a glass or ceramic matrix compound can be exempted.

- #: The lead content of components (140 and 141) are coming from a copper alloy. And according to RoHS directive 2011/65/EU, Lead is exempted as an alloying element in Copper containing up to 4% by weight.

VERIFICATION REPORT

(2) To determine Bis(2-ethylhexyl) phthalate (DEHP), Butyl benzyl phthalate(BBP), Dibutyl phthalate(DBP), Diisobutyl phthalate(DIBP):

Tested Item(s)	Content (mg/kg)					RL
	3	10	25	28	32	
Bis(2-ethylhexyl) phthalate (DEHP)	N.D	N.D	N.D	N.D	N.D	150.0
Butyl benzyl phthalate(BBP)	N.D	N.D	N.D	N.D	N.D	150.0
Dibutyl phthalate(DBP)	N.D	N.D	N.D	N.D	N.D	150.0
Diisobutyl phthalate(DIBP)	N.D	N.D	N.D	N.D	N.D	150.0

Tested Item(s)	Content (mg/kg)					RL
	36	37	41	43	45	
Bis(2-ethylhexyl) phthalate (DEHP)	N.D	N.D	N.D	N.D	N.D	150.0
Butyl benzyl phthalate(BBP)	N.D	N.D	N.D	N.D	N.D	150.0
Dibutyl phthalate(DBP)	N.D	N.D	N.D	N.D	N.D	150.0
Diisobutyl phthalate(DIBP)	N.D	N.D	N.D	N.D	N.D	150.0

Tested Item(s)	Content (mg/kg)					RL
	47	49	51	68	70	
Bis(2-ethylhexyl) phthalate (DEHP)	N.D	N.D	N.D	N.D	N.D	150.0
Butyl benzyl phthalate(BBP)	N.D	N.D	N.D	N.D	N.D	150.0
Dibutyl phthalate(DBP)	N.D	N.D	N.D	N.D	N.D	150.0
Diisobutyl phthalate(DIBP)	N.D	N.D	N.D	N.D	N.D	150.0

Tested Item(s)	Content (mg/kg)					RL
	71	72	73	77	78	
Bis(2-ethylhexyl) phthalate (DEHP)	N.D	N.D	N.D	N.D	N.D	150.0
Butyl benzyl phthalate(BBP)	N.D	N.D	N.D	N.D	N.D	150.0
Dibutyl phthalate(DBP)	N.D	N.D	N.D	N.D	N.D	150.0
Diisobutyl phthalate(DIBP)	N.D	N.D	N.D	N.D	N.D	150.0

VERIFICATION REPORT

Tested Item(s)	Content (mg/kg)					RL
	79	80	90	98	109	
Bis(2-ethylhexyl) phthalate (DEHP)	N.D	N.D	N.D	N.D	N.D	150.0
Butyl benzyl phthalate(BBP)	N.D	N.D	N.D	N.D	N.D	150.0
Dibutyl phthalate(DBP)	N.D	N.D	N.D	N.D	N.D	150.0
Diisobutyl phthalate(DIBP)	N.D	N.D	N.D	N.D	N.D	150.0

Tested Item(s)	Content (mg/kg)					RL
	110	111	114	115	116	
Bis(2-ethylhexyl) phthalate (DEHP)	N.D	N.D	N.D	N.D	N.D	150.0
Butyl benzyl phthalate(BBP)	N.D	N.D	N.D	N.D	N.D	150.0
Dibutyl phthalate(DBP)	N.D	N.D	2.4×10 ²	3.9×10 ²	3.8×10 ⁴	150.0
Diisobutyl phthalate(DIBP)	N.D	N.D	N.D	N.D	N.D	150.0

Tested Item(s)	Content (mg/kg)					RL
	117	125	142	143	144	
Bis(2-ethylhexyl) phthalate (DEHP)	N.D	N.D	N.D	N.D	N.D	150.0
Butyl benzyl phthalate(BBP)	N.D	N.D	N.D	N.D	N.D	150.0
Dibutyl phthalate(DBP)	2.5×10 ²	N.D	N.D	N.D	N.D	150.0
Diisobutyl phthalate(DIBP)	N.D	N.D	N.D	N.D	N.D	150.0

Tested Item(s)	Content (mg/kg)					RL
	155	156	161	163	173	
Bis(2-ethylhexyl) phthalate (DEHP)	N.D	N.D	N.D	N.D	N.D	150.0
Butyl benzyl phthalate(BBP)	N.D	N.D	N.D	N.D	N.D	150.0
Dibutyl phthalate(DBP)	N.D	N.D	N.D	N.D	N.D	150.0
Diisobutyl phthalate(DIBP)	N.D	N.D	N.D	N.D	N.D	150.0

VERIFICATION REPORT

Tested Item(s)	Content (mg/kg)					RL
	174	175	179	180	199	
Bis(2-ethylhexyl) phthalate (DEHP)	N.D	N.D	N.D	N.D	N.D	150.0
Butyl benzyl phthalate(BBP)	N.D	N.D	N.D	N.D	N.D	150.0
Dibutyl phthalate(DBP)	N.D	N.D	N.D	N.D	N.D	150.0
Diisobutyl phthalate(DIBP)	N.D	N.D	N.D	N.D	N.D	150.0

Remark: in the following pages in this report:

- RL = Reporting Limits
- MDL = Method Detection Limit
- N.D = Not Detected (<RL)
- Mg/kg = parts per million = ppm
- N/T = Not tested

VERIFICATION REPORT

TEST METHODS:

- (1) Sample prepared with reference to IEC 62321-2:2013 Determination of certain substances in electrotechnical products – Part 2: Disassembly, disjunction and mechanical sample preparation;
- (2) Sample Screening testing with reference to IEC 62321-3-1:2013 Determination of certain substances in electrotechnical products – Part 3-1: Screening – Lead, mercury, Cadmium, total chromium and total bromine using X-ray fluorescence spectrometry;
 - (a) It is the result on total Br while test item on restricted substances is PBBs/PBDEs. It is the result on total Cr while test item on restricted substances is Cr⁶⁺.
 - (b) Results are obtained by XRF for primary screening, and further chemical testing by ICP-OES(for Cd, Pb, Hg), UV-Vis(for Cr⁶⁺) and GC/MS(for PBBs, PBDEs) is recommended to be performed.
XRF screening limits in mg/kg for regulated elements according to IEC 62321-3-1:2013

ELEMENT	POLYMER	METALS	COMPOSITE MATERIAL
Cd	BL≤(70-3σ) <X<(130+3σ) ≤OL	BL≤(70-3σ) <X<(130+3σ) ≤OL	LOD < X < (150+3σ) ≤ OL
Pb	BL≤(700-3σ) <X<(1300+3σ) ≤OL	BL≤(700-3σ) <X<(1300+3σ) ≤OL	BL≤(500-3σ) <X<(1500+3σ) ≤OL
Hg	BL≤(700-3σ) <X<(1300+3σ) ≤OL	BL≤(700-3σ) <X<(1300+3σ) ≤OL	BL≤(500-3σ) <X<(1500+3σ) ≤OL
Cr	BL≤(700-3σ) <X	BL≤(700-3σ) <X	BL≤(500-3σ) <X
Br	BL≤(300-3σ) <X	--	BL≤(250-3σ) <X

Note: BL = Below Limit, OL = Over Limit, LOD = Limit of Detection, -- = Not Regulated

The XRF screening test for RoHS elements – The reading may be different to the actual content in the sample be of non-uniformity composition.

(3) Wet Chemical Test Method

TESTING ITEM	CHEMICAL TESTING METHOD	MDL	LIMIT
Cd	With reference to IEC 62321-5:2013, by acid digestion and determined by ICP-OES	2.0mg/kg	100mg/kg
Pb	With reference to IEC 62321-5:2013, by acid digestion and determined by ICP-OES	2.0mg/kg	1000mg/kg
Hg	With reference to IEC 62321-4:2013+A1:2017, by acid digestion and determined by ICP-OES	2.0mg/kg	1000mg/kg
Cr ⁶⁺ (for non metal)	With reference to IEC 62321-7-2:2017, by alkaline digestion and determined by UV-VIS spectrophotometer	8.0mg/kg	1000mg/kg
Cr ⁶⁺ (for metal)	With reference to IEC 62321-7-1:2015 by spot – test	0.1μg/cm ²	1000mg/kg
PBBs Content	With reference to IEC 62321-6:2015, by solvent extraction and determined by GC-MS	5.0mg/kg	1000mg/kg
PBDEs Content	With reference to IEC 62321-6:2015, by solvent extraction and determined by GC-MS	5.0mg/kg	1000mg/kg

Note: According to IEC 62321-7-1:2015, result on Cr⁶⁺ for metal sample is shown as Positive/Negative.

VERIFICATION REPORT

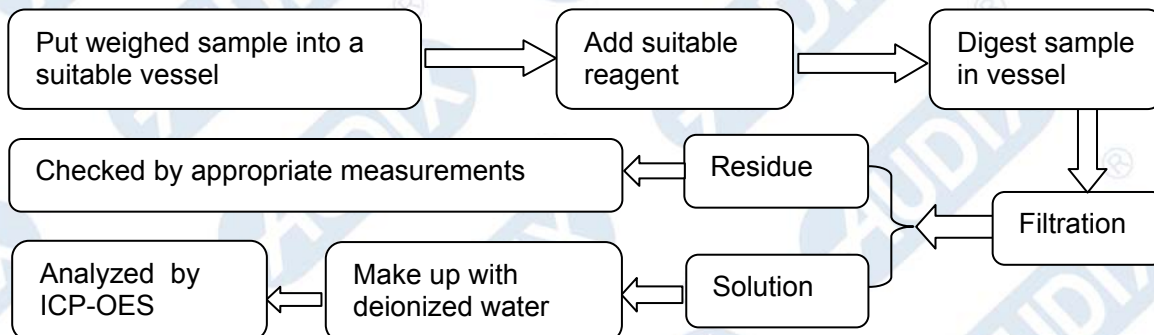
(4) DEHP、BBP、DBP、DIBP Test Method

<u>TESTING ITEM</u>	<u>CHEMICAL TESTING METHOD</u>	<u>MDL</u>	<u>LIMIT</u>
DEHP	With reference to IEC 62321-8:2017, by solvent extraction and determined by GC-MS	50.0mg/kg	1000mg/kg
BBP	With reference to IEC 62321-8:2017, by solvent extraction and determined by GC-MS	50.0mg/kg	1000mg/kg
DBP	With reference to IEC 62321-8:2017, by solvent extraction and determined by GC-MS	50.0mg/kg	1000mg/kg
DIBP	With reference to IEC 62321-8:2017, by solvent extraction and determined by GC-MS	50.0mg/kg	1000mg/kg

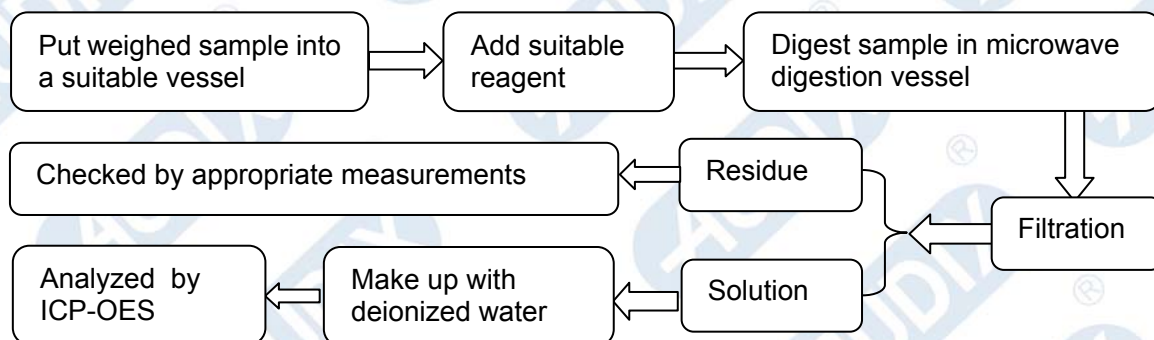
VERIFICATION REPORT

TEST PROCESS

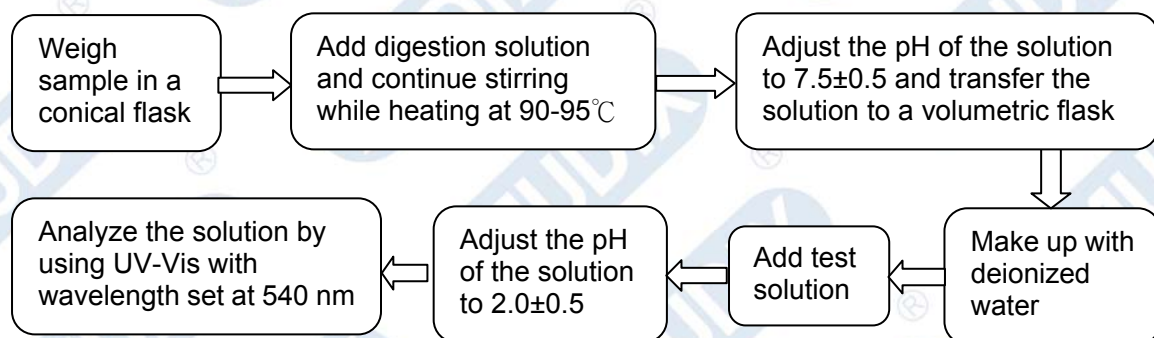
1. Test for Lead (Pb), Cadmium (Cd) contents(IEC 62321-5:2013):



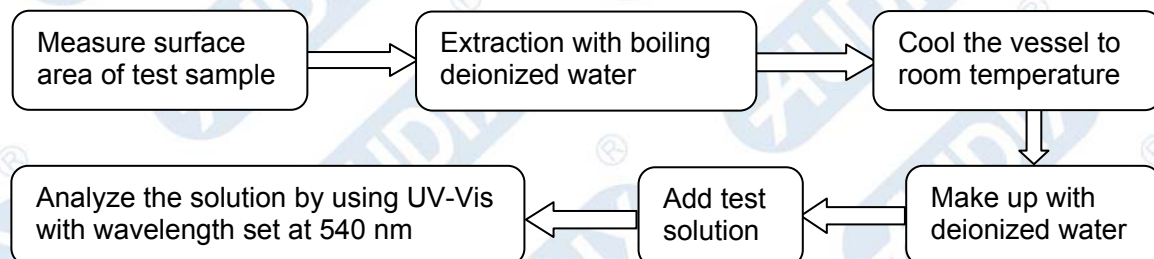
2. Test for Mercury (Hg) contents (IEC 62321-4:2013+A1:2017):



3. Test for Chromium (Cr(VI)) contents (IEC 62321-7-2:2017):

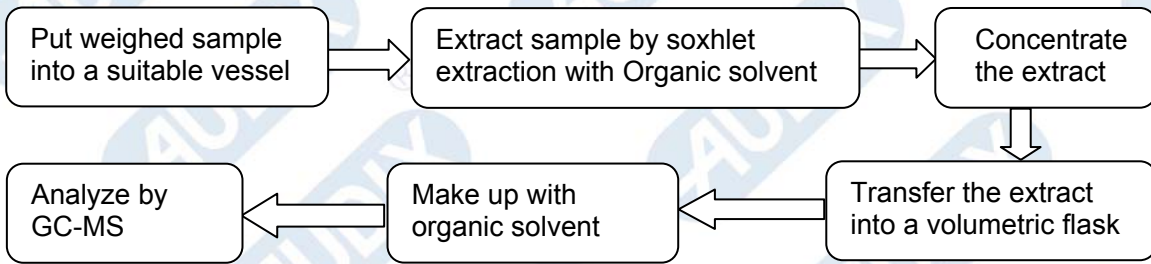


4. Test for Chromium(Cr(VI)) contents (IEC 62321-7-1:2015):

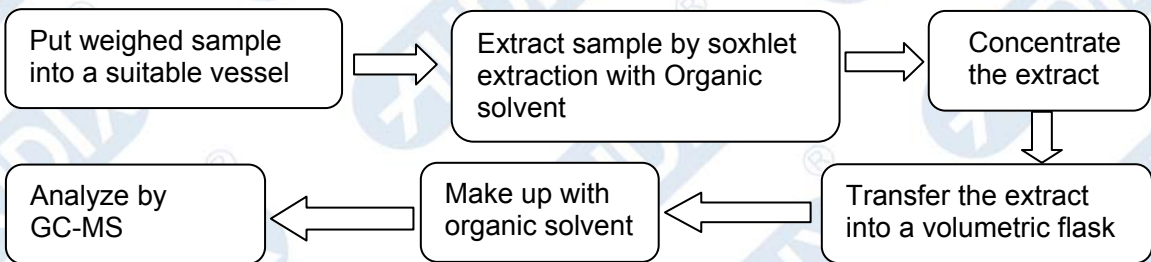


VERIFICATION REPORT

5. Test for PBBs & PBDEs contents (IEC 62321-6:2015):



6. Test for DEHP、DBP、BBP、DIBP contents (IEC 62321-8:2017):



VERIFICATION REPORT**INFORMATION OF TEST SAMPLE****(I) Sample description:**

- (1) Silver color metal
- (2) Silver color metal
- (3) White label with black printing
- (4) Silver color metal
- (5) Silver color metal
- (6) Silver color metal
- (7) Silver color metal
- (8) Silver color screw
- (9) Silver color screw
- (10) Black plastic
- (11) Black ceramic
- (12) Black ceramic
- (13) Black ceramic
- (14) Black ceramic
- (15) Black ceramic
- (16) Black ceramic
- (17) Black ceramic
- (18) Gray ceramic
- (19) Black ceramic
- (20) Brown ceramic
- (21) Silver color metal
- (22) Silver color metal
- (23) Silver color spring
- (24) Silver/copper color metal pin
- (25) Black plastic
- (26) Silver color metal
- (27) Silver color metal pin
- (28) Black plastic
- (29) Green plastic
- (30) Yellow plastic
- (31) Silver color metal pin
- (32) Black plastic
- (33) Green plastic
- (34) Red plastic
- (35) Silver color metal pin
- (36) Black plastic
- (37) Black plastic
- (38) Silver color metal
- (39) Silver color metal
- (40) Silver/copper color metal
- (41) Semi-transparent plastic
- (42) Silver color metal pin
- (43) Beige-yellow plastic
- (44) Silver color metal pin
- (45) Beige-yellow plastic
- (46) Silver color metal pin
- (47) Black plastic

VERIFICATION REPORT

- (48) Silver color metal pin
- (49) Black plastic
- (50) Silver color metal
- (51) Black plastic with white printing
- (52) Black ceramic
- (53) Black ceramic
- (54) Silver color metal pin
- (55) Green wires
- (56) Red wires
- (57) Copper color wires
- (58) Black plastic with gold printing
- (59) Semi-transparent paper sheet
- (60) Black rubber
- (61) Silver color metal
- (62) Dull silver color metal
- (63) Dull silver color metal
- (64) Silver color metal pin
- (65) Brown ceramic
- (66) Brown ceramic
- (67) Brown ceramic
- (68) Conformal coating with green solder mask & Gold color plated silver color metal pad & Fiberboard
- (69) Soldering tin
- (70) White plastic
- (71) Black plastic
- (72) White label with black & green & gray printing
- (73) Black plastic
- (74) Silver color metal
- (75) Silver color screw
- (76) Silver color metal pin
- (77) Red plastic wire jacket
- (78) Black plastic wire jacket
- (79) Blue plastic wire jacket
- (80) Yellow plastic wire jacket
- (81) Silver color wires
- (82) Black ceramic
- (83) White ceramic with black printing
- (84) Soldering tin
- (85) Black ceramic
- (86) Black ceramic
- (87) Black ceramic
- (88) White ceramic with black printing
- (89) Black ceramic
- (90) Conformal coating with green solder mask & Gold color plated silver color metal pad & Fiberboard
- (91) Black ceramic
- (92) Silver color metal
- (93) Silver color metal with brown printing
- (94) Silver color metal
- (95) Silver color metal
- (96) Silver color metal

VERIFICATION REPORT

- (97) Black rubber
- (98) Black plastic
- (99) Brown glue
- (100) Silver color spring
- (101) Black treated metal
- (102) Copper color wires
- (103) Silver color metal
- (104) Silver color metal
- (105) Silver color metal
- (106) Silver color metal
- (107) Brown plastic
- (108) Beige-yellow plastic
- (109) Black plastic
- (110) Silver color label with blue printing
- (111) Black plastic
- (112) White label with black printing
- (113) Orange label with black printing
- (114) Black plastic wire jacket
- (115) Yellow plastic wire jacket
- (116) Blue plastic wire jacket
- (117) Red plastic wire jacket
- (118) Black ceramic
- (119) Black ceramic
- (120) Transparent glue
- (121) Black ceramic
- (122) Black ceramic
- (123) Soldering tin
- (124) Black ceramic
- (125) Conformal coating with green solder mask & Gold color plated silver color metal pad & Fiberboard
- (126) Beige-yellow glue
- (127) White ceramic with black printing
- (128) Purple plastic with gold printing
- (129) Semi-transparent paper sheet
- (130) Black rubber
- (131) Silver color metal
- (132) Dull silver color metal
- (133) Dull silver color metal
- (134) Silver color metal pin
- (135) Black treated metal
- (136) Silver color metal
- (137) Silver color metal
- (138) Silver color spring
- (139) Black treated metal
- (140) Copper color metal
- (141) Copper color metal
- (142) Black rubber
- (143) Black plastic
- (144) Black plastic
- (145) Gray glue
- (146) Copper color wires

VERIFICATION REPORT

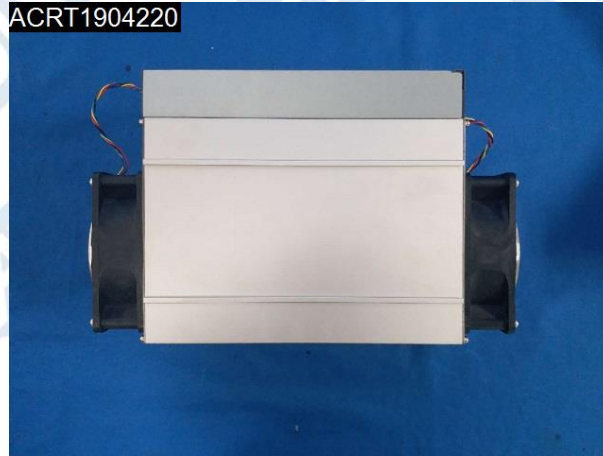
- (147) Silver color metal
- (148) Silver color metal
- (149) Silver color metal
- (150) Silver color metal
- (151) Silver color metal
- (152) Brown plastic
- (153) Silver color metal pin
- (154) Silver color wires
- (155) Orange/white plastic wire jacket
- (156) White plastic
- (157) Silver color metal
- (158) Black ceramic
- (159) Black ceramic
- (160) Gray ceramic
- (161) Beige-yellow plastic
- (162) Silver color metal pin
- (163) Beige-yellow plastic
- (164) Silver color metal pin
- (165) White label with black printing
- (166) Gray glue
- (167) Gray ceramic
- (168) Copper color metal
- (169) Silver color metal with blue printing
- (170) Dull silver color metal
- (171) Dull silver color metal
- (172) Silver color metal pin
- (173) Beige-yellow adhesive tape
- (174) Black rubber
- (175) Black plastic
- (176) Silver color metal with black printing
- (177) Black treated metal
- (178) Silver color metal pin
- (179) Black rubber
- (180) Black plastic
- (181) Black ceramic
- (182) Yellow ceramic
- (183) Black ceramic
- (184) Black ceramic
- (185) Black ceramic
- (186) Black sponge
- (187) Silver color metal
- (188) Gray ceramic
- (189) Black ceramic
- (190) Black ceramic with white printing
- (191) White ceramic with black printing
- (192) Conformal coating with green solder mask & Gold color plated silver color metal pad & Fiberboard
- (193) Silver color metal
- (194) Silver color metal with black printing
- (195) Black treated metal
- (196) Silver color metal pin

VERIFICATION REPORT

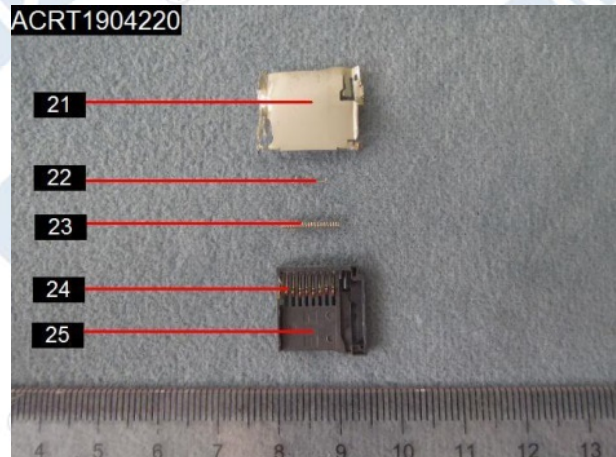
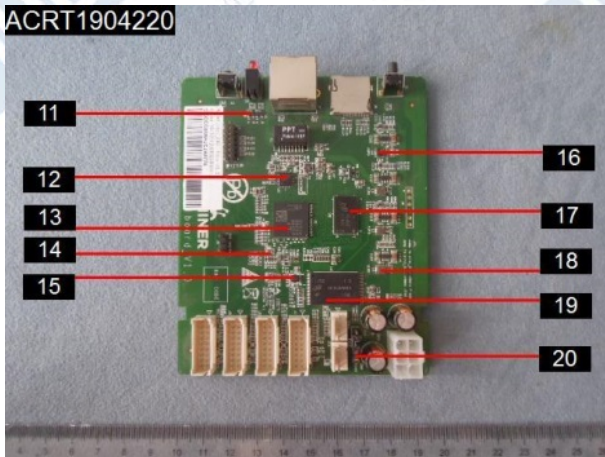
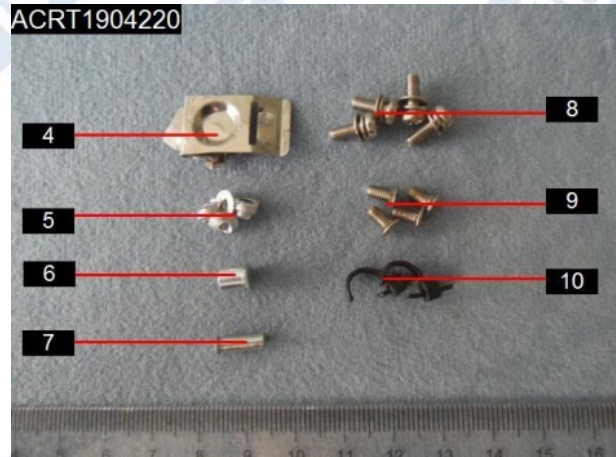
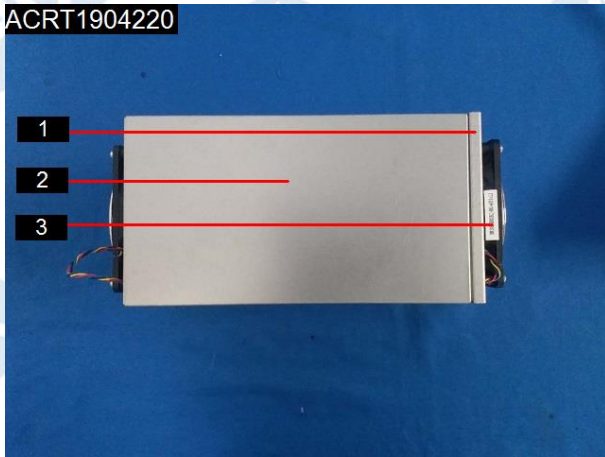
- (197) Semi-transparent paper sheet
- (198) Brown adhesive tape
- (199) Black rubber
- (200) Black plastic

VERIFICATION REPORT

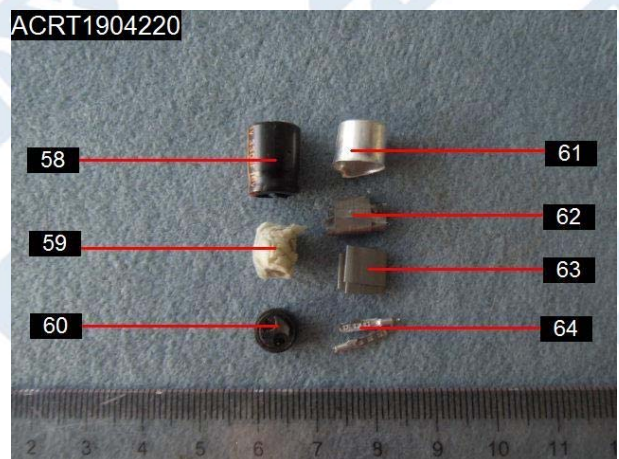
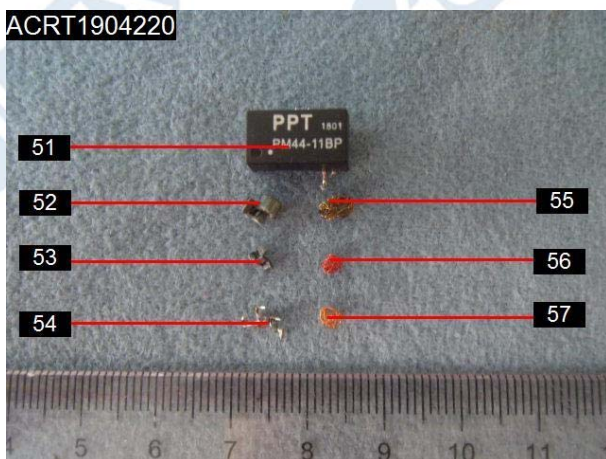
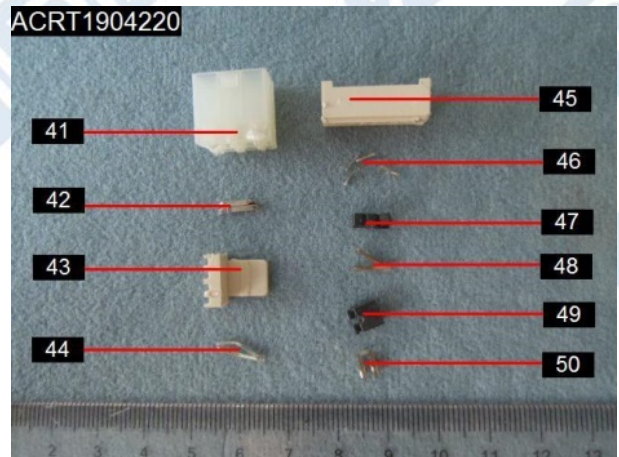
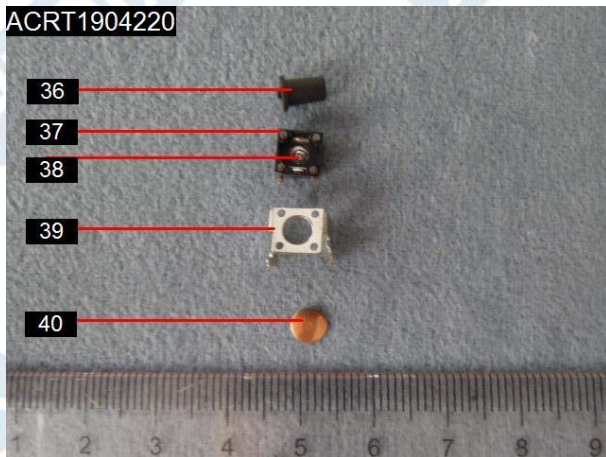
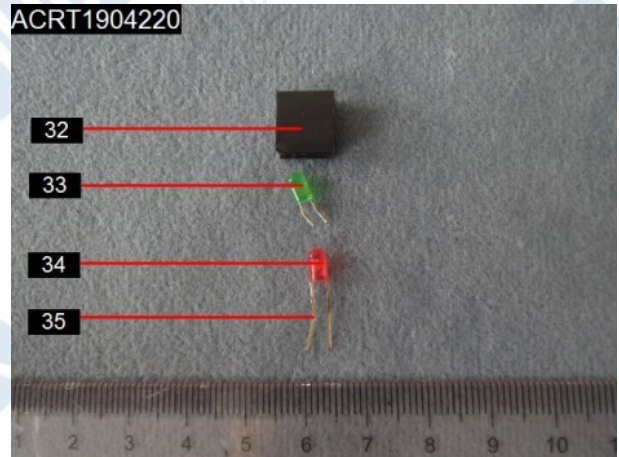
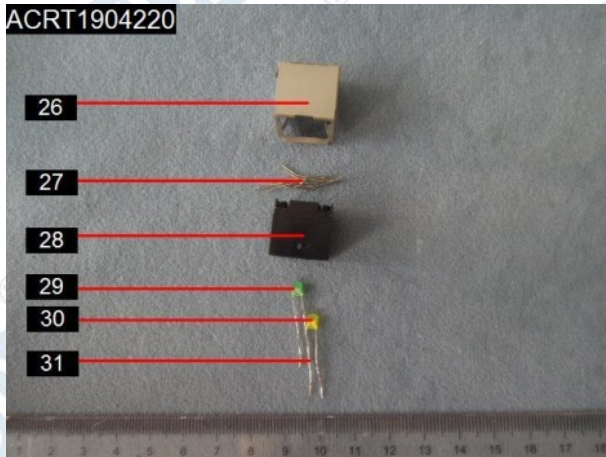
(II) Photo(s) of test sample(s):



(Whole product)

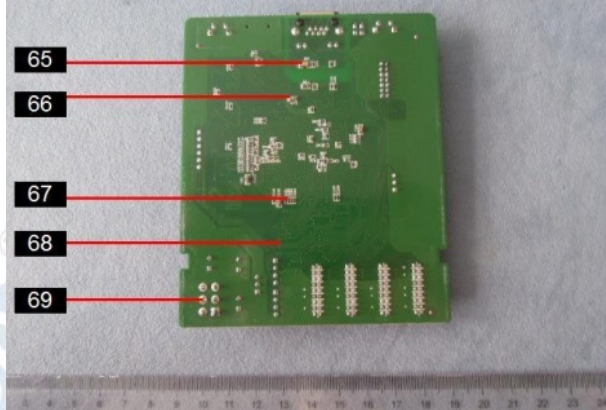


VERIFICATION REPORT

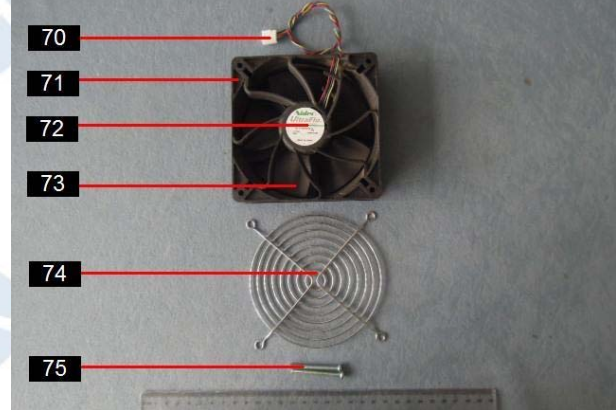


VERIFICATION REPORT

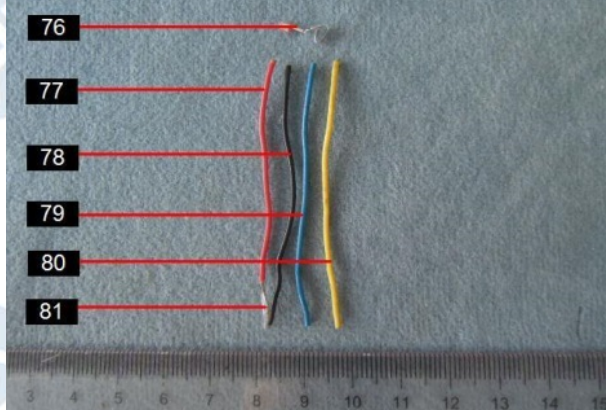
ACRT1904220



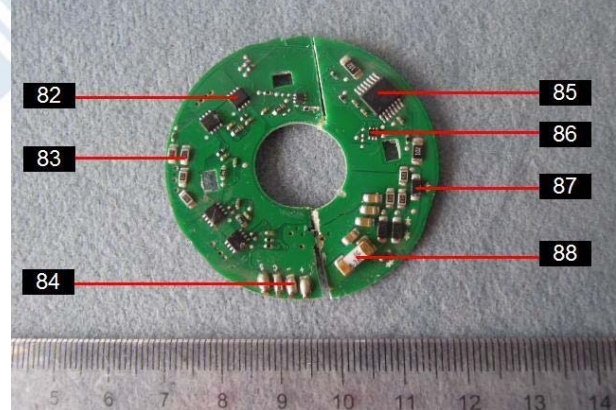
ACRT1904220



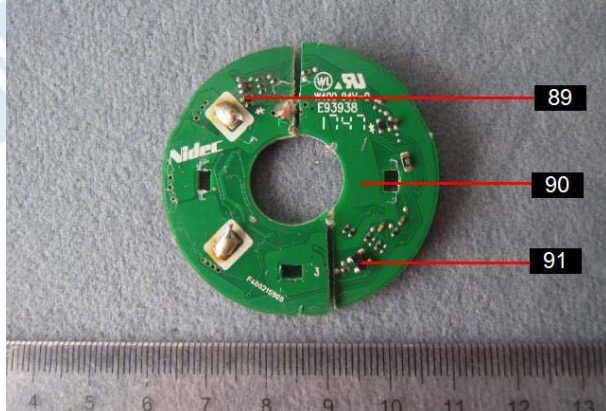
ACRT1904220



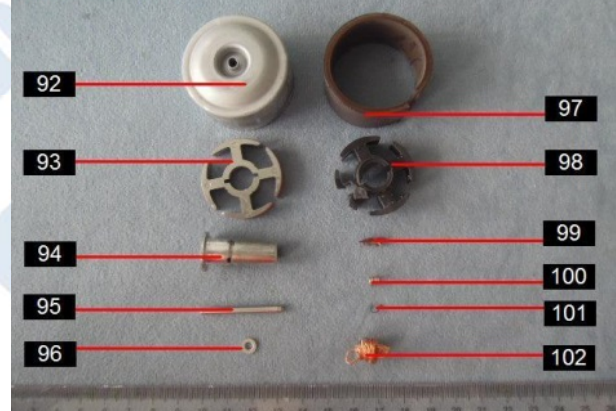
ACRT1904220



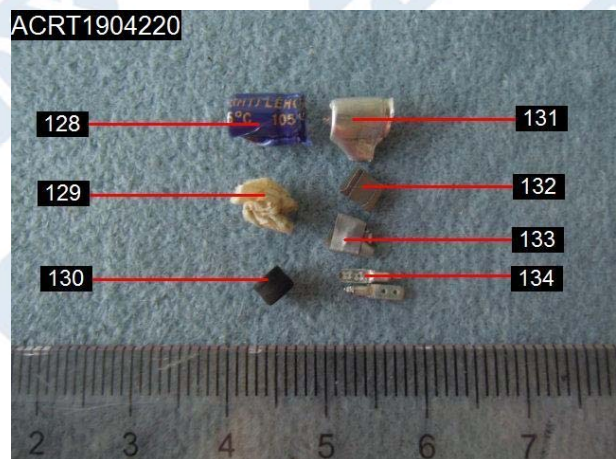
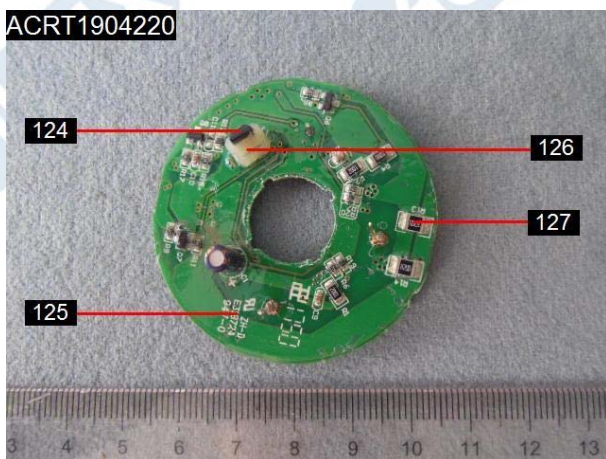
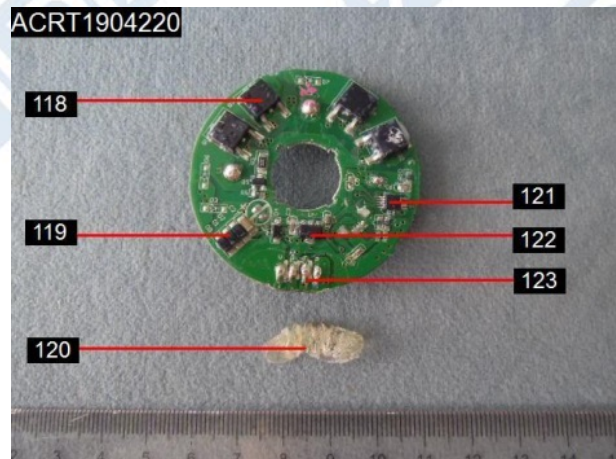
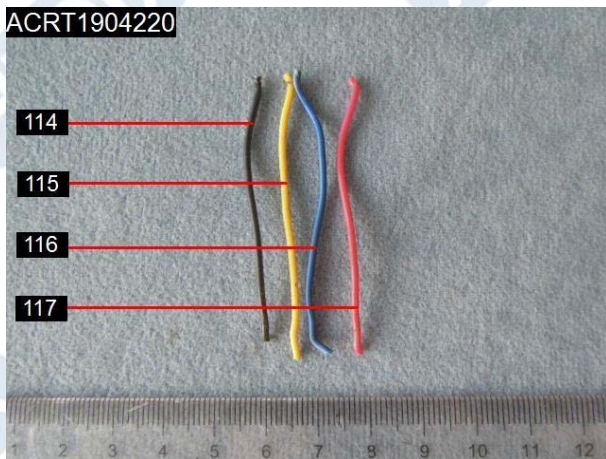
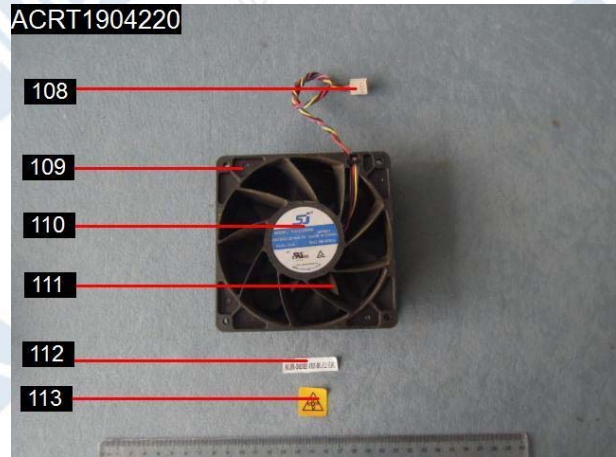
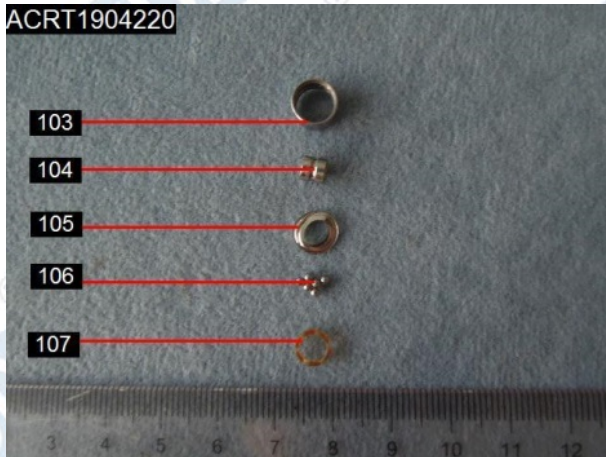
ACRT1904220



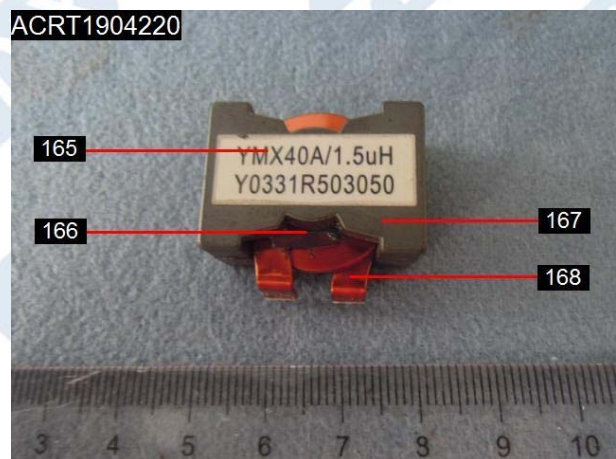
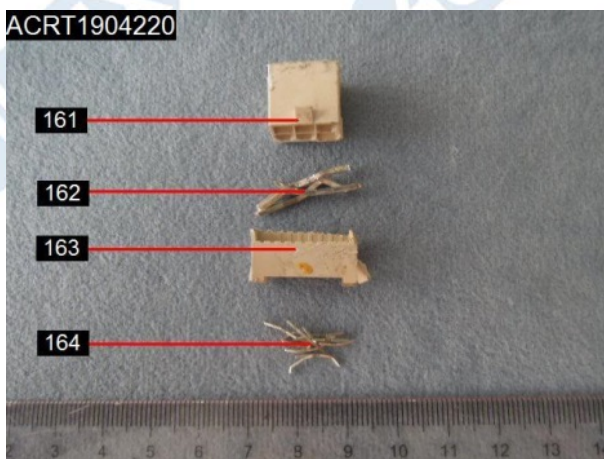
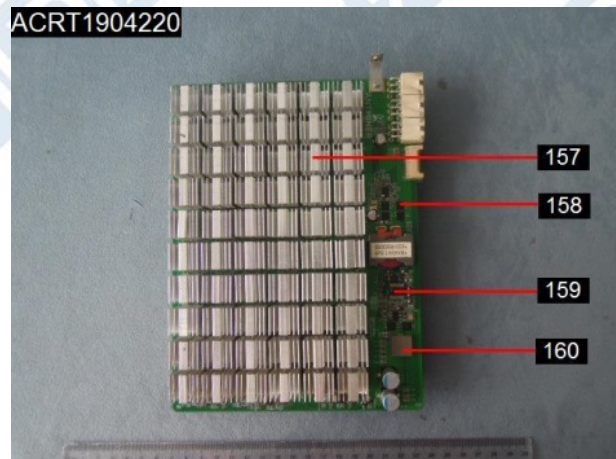
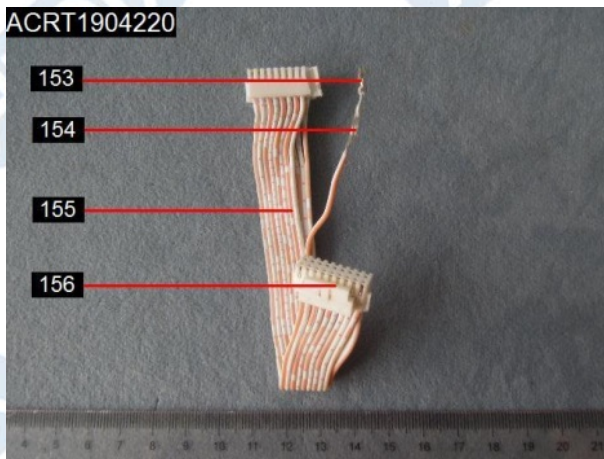
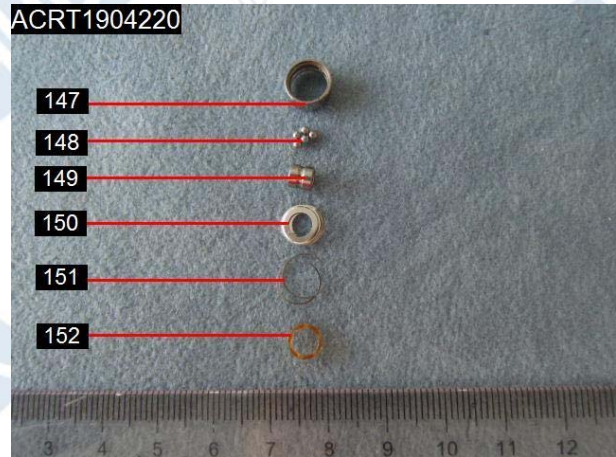
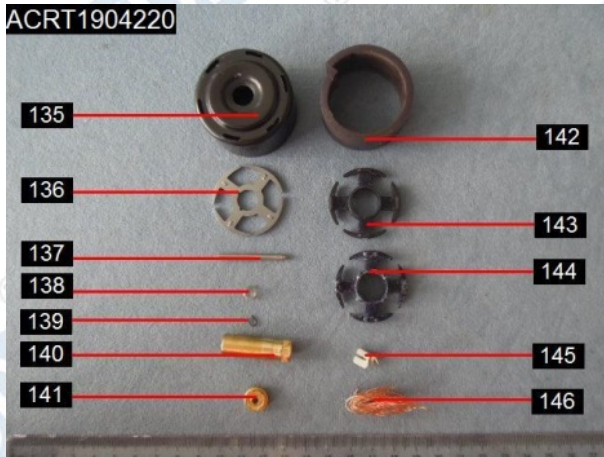
ACRT1904220



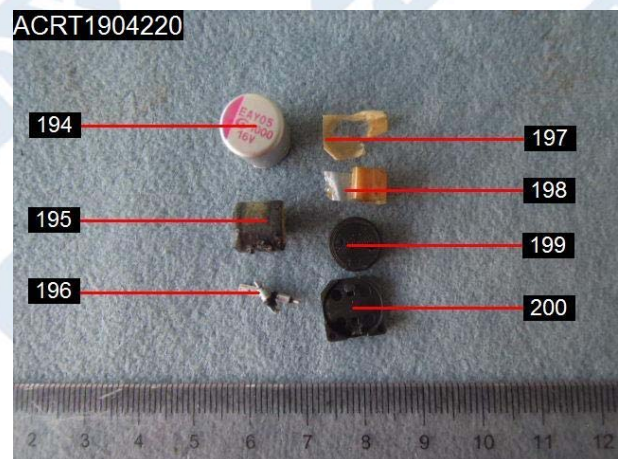
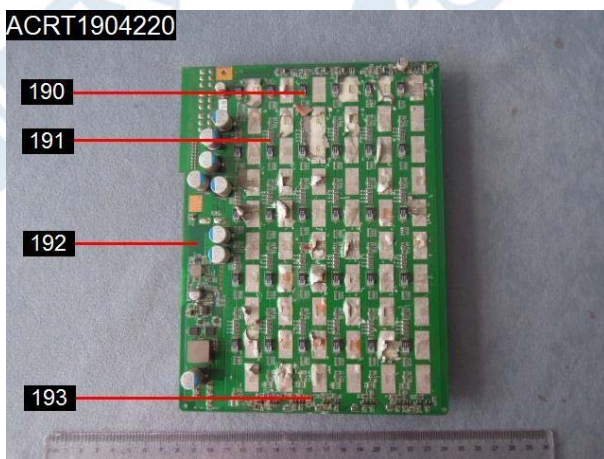
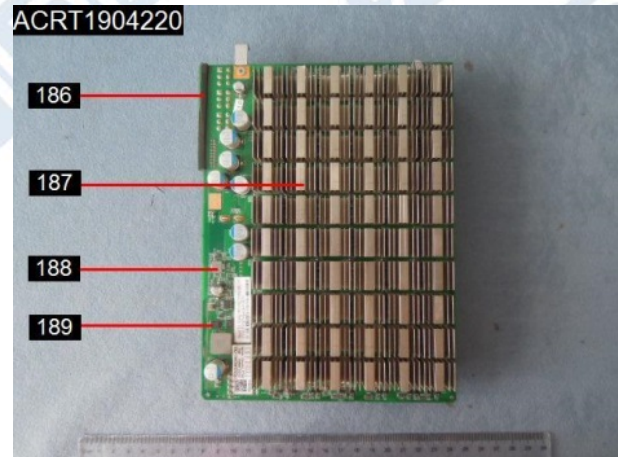
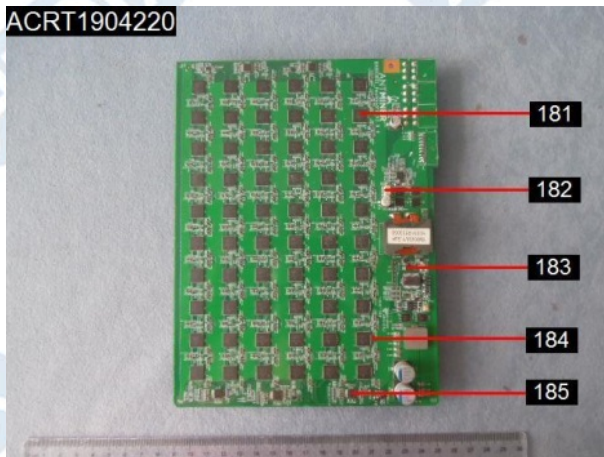
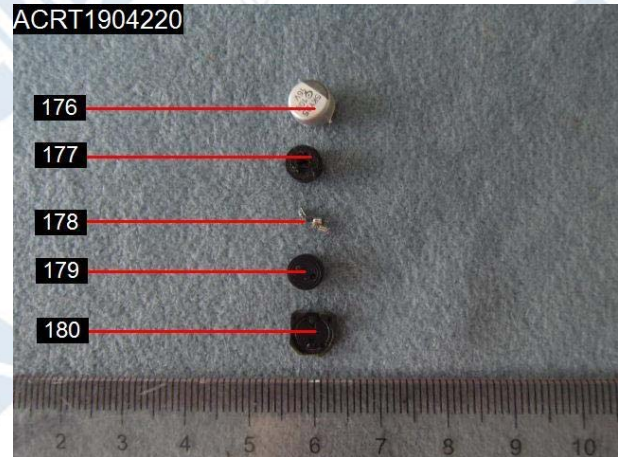
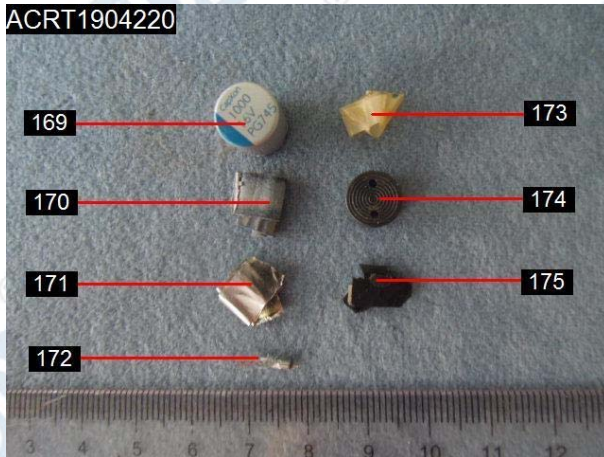
VERIFICATION REPORT



VERIFICATION REPORT



VERIFICATION REPORT



*** End of report ***