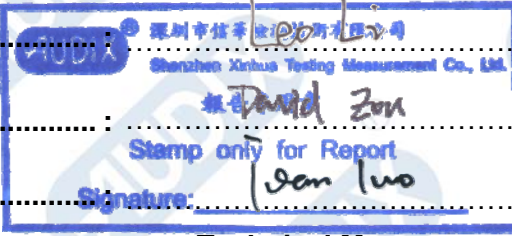


**VERIFICATION REPORT**

Report No. ....	: ACRT1811006
Applicant .....	: Shenzhen Century Cloud Core Technologies Limited
Address .....	: F1-F5, B1 Complex Building, Gangtuo Industrial Park, Yabian Community, Shajing Town, Baoan District, Shenzhen
Sample Name .....	: SERVER
Model No. ....	: 240-A
Date of sample received .....	: Nov. 16, 2018
Amount of the sample .....	: 1pcs
Test period .....	: Nov. 16, 2018 to Dec. 04, 2018
Test request .....	: As specified by client, Split the sample and determine the Lead, Cadmium, Mercury, Hexavalent Chromium, PBBs&PBDEs and Phthalates such as Bis(2-ethylhexyl) phthalate (DEHP), Butyl benzyl phthalate (BBP), Dibutyl phthalate (DBP), Dissobutyl phthalate (DIBP) content in the submitted samples.
Test Method .....	: Please refer to the following page(s).
Test result .....	: Please refer to the following page(s).
Conclusion .....	: When tested as specified, the results shown on the report did not exceed the required limit of RoHS Directive (EU) 2015/863 amending Annex II to Directive 2011/65/EU.

Written by (Signature) .....	 <p>Signature: <i>David Zou</i></p> <p>Stamp only for Report</p>
Reviewed by (Signature) .....	
Approved by (Signature/Position) .....	

**Technical Manager**

Approved date .....	: Dec. 04, 2018
<p>Remark: The test result presented in this report relate only to the sample(s) tested. This report is considered invalidated without the Special Seal for Inspection of the testing laboratory. This report shall not be altered, increased or deleted. Without the written approval of the issuing testing laboratory, this report shall not be reproduced, duplicated, except in full, and published as advertisement</p>	

## VERIFICATION REPORT

Test Results (Unit: mg/kg)

(1) To determine Lead, Cadmium, Mercury, Hexavalent Chromium, PBBs&PBDEs:

TESTED MATERIAL	SCHEME	TARGET RoHS SUBSTANCES	TEST METHOD USED	XRF RESULT ( in mg/kg )	CHEMICAL TEST RESULT ( in mg/kg )
1	1	All	XRF	Cd: N.D	N/T
				Cr: N.D	
				Pb: N.D	
				Hg: N.D	
				Br: N.D	
2	2	All	XRF	Cd: N.D	N/T
				Cr: N.D	
				Pb: N.D	
				Hg: N.D	
				Br: N.D	
3	3	All	XRF	Cd: N.D	N/T
				Cr: N.D	
				Pb: N.D	
				Hg: N.D	
				Br: N.D	
4	4	All	XRF	Cd: N.D	N/T
				Cr: N.D	
				Pb: N.D	
				Hg: N.D	
				Br: N.D	
5	5	All	XRF + Chemical	Cd: N.D	Cr <sup>6+</sup> : Negative
				Cr: Inconclusive	
				Pb: N.D	
				Hg: N.D	
				Br: N.D	
6	6	All	XRF + Chemical	Cd: N.D	Cr <sup>6+</sup> : Negative
				Cr: Inconclusive	
				Pb: N.D	
				Hg: N.D	
				Br: N.D	
7	7	All	XRF + Chemical	Cd: N.D	Cr <sup>6+</sup> : Negative
				Cr: Inconclusive	
				Pb: N.D	
				Hg: N.D	
				Br: N.D	
8	8	All	XRF + Chemical	Cd: N.D	Cr <sup>6+</sup> : Negative
				Cr: Inconclusive	
				Pb: N.D	
				Hg: N.D	
				Br: N.D	

## VERIFICATION REPORT

TESTED MATERIAL	SCHEME	TARGET RoHS SUBSTANCES	TEST METHOD USED	XRF RESULT ( in mg/kg )	CHEMICAL TEST RESULT ( in mg/kg )
9	9	All	XRF	Cd: N.D	N/T
				Cr: N.D	
				Pb: N.D	
				Hg: N.D	
				Br: N.D	
10	10	All	XRF	Cd: N.D	N/T
				Cr: N.D	
				Pb: N.D	
				Hg: N.D	
				Br: N.D	
11	11	All	XRF	Cd: N.D	N/T
				Cr: N.D	
				Pb: N.D	
				Hg: N.D	
				Br: N.D	
12	12	All	XRF + Chemical	Cd: N.D	Cr <sup>6+</sup> : Negative
				Cr: Inconclusive	
				Pb: N.D	
				Hg: N.D	
				Br: N.D	
13	13	All	XRF	Cd: N.D	N/T
				Cr: N.D	
				Pb: N.D	
				Hg: N.D	
				Br: N.D	
14	14	All	XRF	Cd: N.D	N/T
				Cr: N.D	
				Pb: N.D	
				Hg: N.D	
				Br: N.D	
15	15	All	XRF	Cd: N.D	N/T
				Cr: N.D	
				Pb: N.D	
				Hg: N.D	
				Br: N.D	
16	16	All	XRF	Cd: N.D	N/T
				Cr: N.D	
				Pb: N.D	
				Hg: N.D	
				Br: N.D	
17	17	All	XRF	Cd: N.D	N/T
				Cr: N.D	
				Pb: N.D	
				Hg: N.D	
				Br: N.D	

## VERIFICATION REPORT

TESTED MATERIAL	SCHEME	TARGET RoHS SUBSTANCES	TEST METHOD USED	XRF RESULT ( in mg/kg )	CHEMICAL TEST RESULT ( in mg/kg )
18	18	All	XRF	Cd: N.D	N/T
				Cr: N.D	
				Pb: N.D	
				Hg: N.D	
				Br: N.D	
19	19	All	XRF	Cd: N.D	N/T
				Cr: N.D	
				Pb: N.D	
				Hg: N.D	
				Br: N.D	
20	20	All	XRF	Cd: N.D	N/T
				Cr: N.D	
				Pb: N.D	
				Hg: N.D	
				Br: N.D	
21	21	All	XRF + Chemical	Cd: N.D	PBBs: N.D(<5.0) PBDEs: N.D(<5.0)
				Cr: N.D	
				Pb: N.D	
				Hg: N.D	
				Br: Inconclusive	
22	22	All	XRF	Cd: N.D	N/T
				Cr: N.D	
				Pb: N.D	
				Hg: N.D	
				Br: N.D	
23	23	All	XRF + Chemical	Cd: N.D	PBBs: N.D(<5.0) PBDEs: N.D(<5.0)
				Cr: N.D	
				Pb: N.D	
				Hg: N.D	
				Br: Inconclusive	
24	24	All	XRF	Cd: N.D	N/T
				Cr: N.D	
				Pb: N.D	
				Hg: N.D	
				Br: N.D	
25	25	All	XRF	Cd: N.D	N/T
				Cr: N.D	
				Pb: N.D	
				Hg: N.D	
				Br: N.D	
26	26	All	XRF	Cd: N.D	N/T
				Cr: N.D	
				Pb: N.D	
				Hg: N.D	
				Br: N.D	

## VERIFICATION REPORT

TESTED MATERIAL	SCHEME	TARGET RoHS SUBSTANCES	TEST METHOD USED	XRF RESULT ( in mg/kg )	CHEMICAL TEST RESULT ( in mg/kg )
27	27	All	XRF	Cd: N.D	N/T
				Cr: N.D	
				Pb: N.D	
				Hg: N.D	
				Br: N.D	
28	28	All	XRF + Chemical	Cd: N.D	PBBs: N.D(<5.0) PBDEs: N.D(<5.0)
				Cr: N.D	
				Pb: N.D	
				Hg: N.D	
				Br: Inconclusive	
29	29	All	XRF	Cd: N.D	N/T
				Cr: N.D	
				Pb: N.D	
				Hg: N.D	
				Br: N.D	
30	30	All	XRF	Cd: N.D	N/T
				Cr: N.D	
				Pb: N.D	
				Hg: N.D	
				Br: N.D	
31	31	All	XRF + Chemical	Cd: N.D	Cr <sup>6+</sup> : N.D(<1.0)
				Cr: Inconclusive	
				Pb: N.D	
				Hg: N.D	
				Br: N.D	
32	32	All	XRF	Cd: N.D	N/T
				Cr: N.D	
				Pb: N.D	
				Hg: N.D	
				Br: N.D	
33	33	All	XRF	Cd: N.D	N/T
				Cr: N.D	
				Pb: N.D	
				Hg: N.D	
				Br: N.D	
34	34	All	XRF + Chemical	Cd: N.D	PBBs: N.D(<5.0) PBDEs: N.D(<5.0)
				Cr: N.D	
				Pb: N.D	
				Hg: N.D	
				Br: Inconclusive	
35	35	All	XRF	Cd: N.D	N/T
				Cr: N.D	
				Pb: N.D	
				Hg: N.D	
				Br: N.D	

## VERIFICATION REPORT

TESTED MATERIAL	SCHEME	TARGET RoHS SUBSTANCES	TEST METHOD USED	XRF RESULT ( in mg/kg )	CHEMICAL TEST RESULT ( in mg/kg )
36	36	All	XRF	Cd: N.D	N/T
				Cr: N.D	
				Pb: N.D	
				Hg: N.D	
				Br: N.D	
37	37	All	XRF + Chemical	Cd: N.D	PBBs: N.D(<5.0) PBDEs: N.D(<5.0)
				Cr: N.D	
				Pb: N.D	
				Hg: N.D	
				Br: Inconclusive	
38	38	All	XRF	Cd: N.D	N/T
				Cr: N.D	
				Pb: N.D	
				Hg: N.D	
				Br: N.D	
39	39	All	XRF + Chemical	Cd: N.D	PBBs: N.D(<5.0) PBDEs: N.D(<5.0)
				Cr: N.D	
				Pb: N.D	
				Hg: N.D	
				Br: Inconclusive	
40	40	All	XRF + Chemical	Cd: N.D	PBBs: N.D(<5.0) PBDEs: N.D(<5.0)
				Cr: N.D	
				Pb: N.D	
				Hg: N.D	
				Br: Inconclusive	
41	41	All	XRF + Chemical	Cd: N.D	PBBs: N.D(<5.0) PBDEs: N.D(<5.0)
				Cr: N.D	
				Pb: N.D	
				Hg: N.D	
				Br: Inconclusive	
42	42	All	XRF + Chemical	Cd: N.D	PBBs: N.D(<5.0) PBDEs: N.D(<5.0)
				Cr: N.D	
				Pb: N.D	
				Hg: N.D	
				Br: Inconclusive	
43	43	All	XRF	Cd: N.D	N/T
				Cr: N.D	
				Pb: N.D	
				Hg: N.D	
				Br: N.D	
44	44	All	XRF	Cd: N.D	N/T
				Cr: N.D	
				Pb: N.D	
				Hg: N.D	
				Br: N.D	

## VERIFICATION REPORT

TESTED MATERIAL	SCHEME	TARGET RoHS SUBSTANCES	TEST METHOD USED	XRF RESULT ( in mg/kg )	CHEMICAL TEST RESULT ( in mg/kg )
45	45	All	XRF + Chemical	Cd:Inconclusive	Cd: See remark Pb: N.D(<2.0)
				Cr: N.D	
				Pb:Inconclusive	
				Hg: N.D	
46	46	All	XRF	Br: N.D	N/T
				Cd: N.D	
				Cr: N.D	
				Pb: N.D	
47	47	All	XRF	Hg: N.D	N/T
				Br: N.D	
				Cd: N.D	
				Cr: N.D	
48	48	All	XRF	Pb: N.D	N/T
				Hg: N.D	
				Cr: N.D	
				Cd: N.D	
49	49	All	XRF	Br: N.D	N/T
				Hg: N.D	
				Pb: N.D	
				Cr: N.D	
50	50	All	XRF + Chemical	Cd: N.D	PBBs: N.D(<5.0) PBDEs: N.D(<5.0)
				Cr: N.D	
				Pb: N.D	
				Hg: N.D	
51	51	All	XRF	Br: Inconclusive	N/T
				Cd: N.D	
				Cr: N.D	
				Pb: N.D	
52	52	All	XRF	Hg: N.D	N/T
				Br: N.D	
				Pb: N.D	
				Cr: N.D	
53	53	All	XRF + Chemical	Cd: N.D	PBBs: N.D(<5.0) PBDEs: N.D(<5.0)
				Cr: N.D	
				Pb: N.D	
				Hg: N.D	
				Br: Inconclusive	

## VERIFICATION REPORT

TESTED MATERIAL	SCHEME	TARGET RoHS SUBSTANCES	TEST METHOD USED	XRF RESULT ( in mg/kg )	CHEMICAL TEST RESULT ( in mg/kg )
54	54	All	XRF	Cd: N.D	N/T
				Cr: N.D	
				Pb: N.D	
				Hg: N.D	
				Br: N.D	
55	55	All	XRF	Cd: N.D	N/T
				Cr: N.D	
				Pb: N.D	
				Hg: N.D	
				Br: N.D	
56	56	All	XRF	Cd: N.D	N/T
				Cr: N.D	
				Pb: N.D	
				Hg: N.D	
				Br: N.D	
57	57	All	XRF	Cd: N.D	N/T
				Cr: N.D	
				Pb: N.D	
				Hg: N.D	
				Br: N.D	
58	58	All	XRF + Chemical	Cd: N.D	PBBs: N.D(<5.0) PBDEs: N.D(<5.0)
				Cr: N.D	
				Pb: N.D	
				Hg: N.D	
				Br: Inconclusive	
59	59	All	XRF	Cd: N.D	N/T
				Cr: N.D	
				Pb: N.D	
				Hg: N.D	
				Br: N.D	
60	60	All	XRF	Cd: N.D	N/T
				Cr: N.D	
				Pb: N.D	
				Hg: N.D	
				Br: N.D	
61	61	All	XRF	Cd: N.D	N/T
				Cr: N.D	
				Pb: N.D	
				Hg: N.D	
				Br: N.D	
62	62	All	XRF	Cd: N.D	N/T
				Cr: N.D	
				Pb: N.D	
				Hg: N.D	
				Br: N.D	



## VERIFICATION REPORT

TESTED MATERIAL	SCHEME	TARGET RoHS SUBSTANCES	TEST METHOD USED	XRF RESULT ( in mg/kg )	CHEMICAL TEST RESULT ( in mg/kg )
63	63	All	XRF	Cd: N.D	N/T
				Cr: N.D	
				Pb: N.D	
				Hg: N.D	
				Br: N.D	
64	64	All	XRF	Cd: N.D	N/T
				Cr: N.D	
				Pb: N.D	
				Hg: N.D	
				Br: N.D	
65	65	All	XRF	Cd: N.D	N/T
				Cr: N.D	
				Pb: N.D	
				Hg: N.D	
				Br: N.D	
66	66	All	XRF	Cd: N.D	N/T
				Cr: N.D	
				Pb: N.D	
				Hg: N.D	
				Br: N.D	
67	67	All	XRF	Cd: N.D	N/T
				Cr: N.D	
				Pb: N.D	
				Hg: N.D	
				Br: N.D	
68	68	All	XRF	Cd: N.D	N/T
				Cr: N.D	
				Pb: N.D	
				Hg: N.D	
				Br: N.D	
69	69	All	XRF	Cd: N.D	N/T
				Cr: N.D	
				Pb: N.D	
				Hg: N.D	
				Br: N.D	
70	70	All	XRF	Cd: N.D	N/T
				Cr: N.D	
				Pb: N.D	
				Hg: N.D	
				Br: N.D	
71	71	All	XRF	Cd: N.D	N/T
				Cr: N.D	
				Pb: N.D	
				Hg: N.D	
				Br: N.D	

## VERIFICATION REPORT

TESTED MATERIAL	SCHEME	TARGET RoHS SUBSTANCES	TEST METHOD USED	XRF RESULT ( in mg/kg )	CHEMICAL TEST RESULT ( in mg/kg )
72	72	All	XRF	Cd: N.D	N/T
				Cr: N.D	
				Pb: N.D	
				Hg: N.D	
				Br: N.D	
73	73	All	XRF	Cd: N.D	N/T
				Cr: N.D	
				Pb: N.D	
				Hg: N.D	
				Br: N.D	
74	74	All	XRF	Cd: N.D	N/T
				Cr: N.D	
				Pb: N.D	
				Hg: N.D	
				Br: N.D	
75	75	All	XRF	Cd: N.D	N/T
				Cr: N.D	
				Pb: N.D	
				Hg: N.D	
				Br: N.D	
76	76	All	XRF	Cd: N.D	N/T
				Cr: N.D	
				Pb: N.D	
				Hg: N.D	
				Br: N.D	
77	77	All	XRF	Cd: N.D	N/T
				Cr: N.D	
				Pb: N.D	
				Hg: N.D	
				Br: N.D	
78	78	All	XRF	Cd: N.D	N/T
				Cr: N.D	
				Pb: N.D	
				Hg: N.D	
				Br: N.D	
79	79	All	XRF	Cd: N.D	N/T
				Cr: N.D	
				Pb: N.D	
				Hg: N.D	
				Br: N.D	
80	80	All	XRF	Cd: N.D	N/T
				Cr: N.D	
				Pb: N.D	
				Hg: N.D	
				Br: N.D	

## VERIFICATION REPORT

TESTED MATERIAL	SCHEME	TARGET RoHS SUBSTANCES	TEST METHOD USED	XRF RESULT ( in mg/kg )	CHEMICAL TEST RESULT ( in mg/kg )
81	81	All	XRF	Cd: N.D	N/T
				Cr: N.D	
				Pb: N.D	
				Hg: N.D	
				Br: N.D	
82	82	All	XRF	Cd: N.D	N/T
				Cr: N.D	
				Pb: N.D	
				Hg: N.D	
				Br: N.D	
83	83	All	XRF	Cd: N.D	N/T
				Cr: N.D	
				Pb: N.D	
				Hg: N.D	
				Br: N.D	
84	84	All	XRF	Cd: N.D	N/T
				Cr: N.D	
				Pb: N.D	
				Hg: N.D	
				Br: N.D	
85	85	All	XRF	Cd: N.D	N/T
				Cr: N.D	
				Pb: N.D	
				Hg: N.D	
				Br: N.D	
86	86	All	XRF	Cd: N.D	N/T
				Cr: N.D	
				Pb: N.D	
				Hg: N.D	
				Br: N.D	
87	87	All	XRF	Cd: N.D	N/T
				Cr: N.D	
				Pb: N.D	
				Hg: N.D	
				Br: N.D	
88	88	All	XRF	Cd: N.D	N/T
				Cr: N.D	
				Pb: N.D	
				Hg: N.D	
				Br: N.D	
89	89	All	XRF	Cd: N.D	N/T
				Cr: N.D	
				Pb: N.D	
				Hg: N.D	
				Br: N.D	

## VERIFICATION REPORT

TESTED MATERIAL	SCHEME	TARGET RoHS SUBSTANCES	TEST METHOD USED	XRF RESULT ( in mg/kg )	CHEMICAL TEST RESULT ( in mg/kg )
90	90	All	XRF	Cd: N.D	N/T
				Cr: N.D	
				Pb: N.D	
				Hg: N.D	
				Br: N.D	
91	91	All	XRF	Cd: N.D	N/T
				Cr: N.D	
				Pb: N.D	
				Hg: N.D	
				Br: N.D	
92	92	All	XRF	Cd: N.D	N/T
				Cr: N.D	
				Pb: N.D	
				Hg: N.D	
				Br: N.D	
93	93	All	XRF	Cd: N.D	N/T
				Cr: N.D	
				Pb: N.D	
				Hg: N.D	
				Br: N.D	
94	94	All	XRF	Cd: N.D	N/T
				Cr: N.D	
				Pb: N.D	
				Hg: N.D	
				Br: N.D	
95	95	All	XRF	Cd: N.D	N/T
				Cr: N.D	
				Pb: N.D	
				Hg: N.D	
				Br: N.D	
96	96	All	XRF	Cd: N.D	N/T
				Cr: N.D	
				Pb: N.D	
				Hg: N.D	
				Br: N.D	
97	97	All	XRF	Cd: N.D	N/T
				Cr: N.D	
				Pb: N.D	
				Hg: N.D	
				Br: N.D	
98	98	All	XRF	Cd: N.D	N/T
				Cr: N.D	
				Pb: N.D	
				Hg: N.D	
				Br: N.D	

## VERIFICATION REPORT

TESTED MATERIAL	SCHEME	TARGET RoHS SUBSTANCES	TEST METHOD USED	XRF RESULT ( in mg/kg )	CHEMICAL TEST RESULT ( in mg/kg )
99	99	All	XRF	Cd: N.D	N/T
				Cr: N.D	
				Pb: N.D	
				Hg: N.D	
				Br: N.D	
100	100	All	XRF	Cd: N.D	N/T
				Cr: N.D	
				Pb: N.D	
				Hg: N.D	
				Br: N.D	
101	101	All	XRF	Cd: N.D	N/T
				Cr: N.D	
				Pb: N.D	
				Hg: N.D	
				Br: N.D	
102	102	All	XRF	Cd: N.D	N/T
				Cr: N.D	
				Pb: N.D	
				Hg: N.D	
				Br: N.D	
103	103	All	XRF	Cd: N.D	N/T
				Cr: N.D	
				Pb: N.D	
				Hg: N.D	
				Br: N.D	
104	104	All	XRF	Cd: N.D	N/T
				Cr: N.D	
				Pb: N.D	
				Hg: N.D	
				Br: N.D	
105	105	All	XRF	Cd: N.D	N/T
				Cr: N.D	
				Pb: N.D	
				Hg: N.D	
				Br: N.D	
106	106	All	XRF	Cd: N.D	N/T
				Cr: N.D	
				Pb: N.D	
				Hg: N.D	
				Br: N.D	
107	107	All	XRF	Cd: N.D	N/T
				Cr: N.D	
				Pb: N.D	
				Hg: N.D	
				Br: N.D	

## VERIFICATION REPORT

TESTED MATERIAL	SCHEME	TARGET RoHS SUBSTANCES	TEST METHOD USED	XRF RESULT ( in mg/kg )	CHEMICAL TEST RESULT ( in mg/kg )
108	108	All	XRF	Cd: N.D	N/T
				Cr: N.D	
				Pb: N.D	
				Hg: N.D	
				Br: N.D	
109	109	All	XRF	Cd: N.D	N/T
				Cr: N.D	
				Pb: N.D	
				Hg: N.D	
				Br: N.D	
110	110	All	XRF	Cd: N.D	N/T
				Cr: N.D	
				Pb: N.D	
				Hg: N.D	
				Br: N.D	
111	111	All	XRF	Cd: N.D	N/T
				Cr: N.D	
				Pb: N.D	
				Hg: N.D	
				Br: N.D	
112	112	All	XRF	Cd: N.D	N/T
				Cr: N.D	
				Pb: N.D	
				Hg: N.D	
				Br: N.D	
113	113	All	XRF	Cd: N.D	N/T
				Cr: N.D	
				Pb: N.D	
				Hg: N.D	
				Br: N.D	
114	114	All	XRF	Cd: N.D	N/T
				Cr: N.D	
				Pb: N.D	
				Hg: N.D	
				Br: N.D	
115	115	All	XRF	Cd: N.D	N/T
				Cr: N.D	
				Pb: N.D	
				Hg: N.D	
				Br: N.D	
116	116	All	XRF	Cd: N.D	N/T
				Cr: N.D	
				Pb: N.D	
				Hg: N.D	
				Br: N.D	

## VERIFICATION REPORT

TESTED MATERIAL	SCHEME	TARGET RoHS SUBSTANCES	TEST METHOD USED	XRF RESULT ( in mg/kg )	CHEMICAL TEST RESULT ( in mg/kg )
117	117	All	XRF	Cd: N.D	N/T
				Cr: N.D	
				Pb: N.D	
				Hg: N.D	
				Br: N.D	
118	118	All	XRF	Cd: N.D	N/T
				Cr: N.D	
				Pb: N.D	
				Hg: N.D	
				Br: N.D	
119	119	All	XRF	Cd: N.D	N/T
				Cr: N.D	
				Pb: N.D	
				Hg: N.D	
				Br: N.D	
120	120	All	XRF	Cd: N.D	N/T
				Cr: N.D	
				Pb: N.D	
				Hg: N.D	
				Br: N.D	
121	121	All	XRF	Cd: N.D	N/T
				Cr: N.D	
				Pb: N.D	
				Hg: N.D	
				Br: N.D	
122	122	All	XRF	Cd: N.D	N/T
				Cr: N.D	
				Pb: N.D	
				Hg: N.D	
				Br: N.D	
123	123	All	XRF	Cd: N.D	N/T
				Cr: N.D	
				Pb: N.D	
				Hg: N.D	
				Br: N.D	
124	124	All	XRF	Cd: N.D	N/T
				Cr: N.D	
				Pb: N.D	
				Hg: N.D	
				Br: N.D	
125	125	All	XRF	Cd: N.D	N/T
				Cr: N.D	
				Pb: N.D	
				Hg: N.D	
				Br: N.D	

## VERIFICATION REPORT

TESTED MATERIAL	SCHEME	TARGET RoHS SUBSTANCES	TEST METHOD USED	XRF RESULT ( in mg/kg )	CHEMICAL TEST RESULT ( in mg/kg )
126	126	All	XRF	Cd: N.D	N/T
				Cr: N.D	
				Pb: N.D	
				Hg: N.D	
				Br: N.D	
127	127	All	XRF + Chemical	Cd: N.D	PBBs: N.D(<5.0) PBDEs: N.D(<5.0)
				Cr: N.D	
				Pb: N.D	
				Hg: N.D	
				Br: Inconclusive	
128	128	All	XRF	Cd: N.D	N/T
				Cr: N.D	
				Pb: N.D	
				Hg: N.D	
				Br: N.D	
129	129	All	XRF	Cd: N.D	N/T
				Cr: N.D	
				Pb: N.D	
				Hg: N.D	
				Br: N.D	
130	130	All	XRF	Cd: N.D	N/T
				Cr: N.D	
				Pb: N.D	
				Hg: N.D	
				Br: N.D	
131	131	All	XRF	Cd: N.D	N/T
				Cr: N.D	
				Pb: N.D	
				Hg: N.D	
				Br: N.D	
132	132	All	XRF	Cd: N.D	N/T
				Cr: N.D	
				Pb: N.D	
				Hg: N.D	
				Br: N.D	
133	133	All	XRF	Cd: N.D	N/T
				Cr: N.D	
				Pb: N.D	
				Hg: N.D	
				Br: N.D	
134	134	All	XRF	Cd: N.D	N/T
				Cr: N.D	
				Pb: N.D	
				Hg: N.D	
				Br: N.D	



## VERIFICATION REPORT

TESTED MATERIAL	SCHEME	TARGET RoHS SUBSTANCES	TEST METHOD USED	XRF RESULT ( in mg/kg )	CHEMICAL TEST RESULT ( in mg/kg )
135	135	All	XRF	Cd: N.D	N/T
				Cr: N.D	
				Pb: N.D	
				Hg: N.D	
				Br: N.D	
136	136	All	XRF + Chemical	Cd: N.D	PBBs: N.D(<5.0) PBDEs: N.D(<5.0)
				Cr: N.D	
				Pb: N.D	
				Hg: N.D	
				Br: Inconclusive	
137	137	All	XRF	Cd: N.D	N/T
				Cr: N.D	
				Pb: N.D	
				Hg: N.D	
				Br: N.D	
138	138	All	XRF + Chemical	Cd: N.D	Cr <sup>6+</sup> : N.D(<1.0)
				Cr: Inconclusive	
				Pb: N.D	
				Hg: N.D	
				Br: N.D	
139	139	All	XRF	Cd: N.D	N/T
				Cr: N.D	
				Pb: N.D	
				Hg: N.D	
				Br: N.D	
140	140	All	XRF	Cd: N.D	N/T
				Cr: N.D	
				Pb: N.D	
				Hg: N.D	
				Br: N.D	
141	141	All	XRF + Chemical	Cd: N.D	Pb: 0.6×10 <sup>3</sup>
				Cr: N.D	
				Pb: Inconclusive	
				Hg: N.D	
				Br: N.D	
142	142	All	XRF + Chemical	Cd: N.D	PBBs: N.D(<5.0) PBDEs: N.D(<5.0)
				Cr: N.D	
				Pb: N.D	
				Hg: N.D	
				Br: Inconclusive	
143	143	All	XRF	Cd: N.D	N/T
				Cr: N.D	
				Pb: N.D	
				Hg: N.D	
				Br: N.D	

## VERIFICATION REPORT

TESTED MATERIAL	SCHEME	TARGET RoHS SUBSTANCES	TEST METHOD USED	XRF RESULT ( in mg/kg )	CHEMICAL TEST RESULT ( in mg/kg )
144	144	All	XRF + Chemical	Cd: N.D	PBBs: N.D(<5.0) PBDEs: N.D(<5.0)
				Cr: N.D	
				Pb: N.D	
				Hg: N.D	
				Br: Inconclusive	
145	145	All	XRF + Chemical	Cd: N.D	Cr <sup>6+</sup> : N.D(<1.0) Pb: 0.5×10 <sup>3</sup>
				Cr: Inconclusive	
				Pb: Inconclusive	
				Hg: N.D	
				Br: N.D	
146	146	All	XRF	Cd: N.D	N/T
				Cr: N.D	
				Pb: N.D	
				Hg: N.D	
				Br: N.D	
147	147	All	XRF	Cd: N.D	N/T
				Cr: N.D	
				Pb: N.D	
				Hg: N.D	
				Br: N.D	
148	148	All	XRF + Chemical	Cd: N.D	PBBs: N.D(<5.0) PBDEs: N.D(<5.0)
				Cr: N.D	
				Pb: N.D	
				Hg: N.D	
				Br: Inconclusive	
149	149	All	XRF	Cd: N.D	N/T
				Cr: N.D	
				Pb: N.D	
				Hg: N.D	
				Br: N.D	
150	150	All	XRF + Chemical	Cd: N.D	PBBs: N.D(<5.0) PBDEs: N.D(<5.0)
				Cr: N.D	
				Pb: N.D	
				Hg: N.D	
				Br: Inconclusive	
151	151	All	XRF	Cd: N.D	N/T
				Cr: N.D	
				Pb: N.D	
				Hg: N.D	
				Br: N.D	
152	152	All	XRF	Cd: N.D	N/T
				Cr: N.D	
				Pb: N.D	
				Hg: N.D	
				Br: N.D	

## VERIFICATION REPORT

TESTED MATERIAL	SCHEME	TARGET RoHS SUBSTANCES	TEST METHOD USED	XRF RESULT ( in mg/kg )	CHEMICAL TEST RESULT ( in mg/kg )
153	153	All	XRF	Cd: N.D	N/T
				Cr: N.D	
				Pb: N.D	
				Hg: N.D	
				Br: N.D	
154	154	All	XRF	Cd: N.D	N/T
				Cr: N.D	
				Pb: N.D	
				Hg: N.D	
				Br: N.D	
155	155	All	XRF	Cd: N.D	N/T
				Cr: N.D	
				Pb: N.D	
				Hg: N.D	
				Br: N.D	
156	156	All	XRF	Cd: N.D	N/T
				Cr: N.D	
				Pb: N.D	
				Hg: N.D	
				Br: N.D	
157	157	All	XRF	Cd: N.D	N/T
				Cr: N.D	
				Pb: N.D	
				Hg: N.D	
				Br: N.D	
158	158	All	XRF + Chemical	Cd: N.D	PBBs: N.D(<5.0) PBDEs: N.D(<5.0)
				Cr: N.D	
				Pb: N.D	
				Hg: N.D	
				Br: Inconclusive	
159	159	All	XRF	Cd: N.D	N/T
				Cr: N.D	
				Pb: N.D	
				Hg: N.D	
				Br: N.D	
160	160	All	XRF	Cd: N.D	N/T
				Cr: N.D	
				Pb: N.D	
				Hg: N.D	
				Br: N.D	
161	161	All	XRF	Cd: N.D	N/T
				Cr: N.D	
				Pb: N.D	
				Hg: N.D	
				Br: N.D	

## VERIFICATION REPORT

TESTED MATERIAL	SCHEME	TARGET RoHS SUBSTANCES	TEST METHOD USED	XRF RESULT ( in mg/kg )	CHEMICAL TEST RESULT ( in mg/kg )
162	162	All	XRF	Cd: N.D	N/T
				Cr: N.D	
				Pb: N.D	
				Hg: N.D	
				Br: N.D	
163	163	All	XRF	Cd: N.D	N/T
				Cr: N.D	
				Pb: N.D	
				Hg: N.D	
				Br: N.D	
164	164	All	XRF	Cd: N.D	N/T
				Cr: N.D	
				Pb: N.D	
				Hg: N.D	
				Br: N.D	
165	165	All	XRF	Cd: N.D	N/T
				Cr: N.D	
				Pb: N.D	
				Hg: N.D	
				Br: N.D	
166	166	All	XRF + Chemical	Cd: N.D	Cr <sup>6+</sup> : Negative
				Cr: Inconclusive	
				Pb: N.D	
				Hg: N.D	
				Br: N.D	
167	167	All	XRF + Chemical	Cd: N.D	Cr <sup>6+</sup> : Negative
				Cr: Inconclusive	
				Pb: N.D	
				Hg: N.D	
				Br: N.D	
168	168	All	XRF + Chemical	Cd: N.D	Cr <sup>6+</sup> : Negative
				Cr: Inconclusive	
				Pb: N.D	
				Hg: N.D	
				Br: N.D	
169	169	All	XRF	Cd: N.D	N/T
				Cr: N.D	
				Pb: N.D	
				Hg: N.D	
				Br: N.D	
170	170	All	XRF + Chemical	Cd: N.D	Cr <sup>6+</sup> : Negative
				Cr: Inconclusive	
				Pb: N.D	
				Hg: N.D	
				Br: N.D	

## VERIFICATION REPORT

TESTED MATERIAL	SCHEME	TARGET RoHS SUBSTANCES	TEST METHOD USED	XRF RESULT ( in mg/kg )	CHEMICAL TEST RESULT ( in mg/kg )
171	171	All	XRF	Cd: N.D	N/T
				Cr: N.D	
				Pb: N.D	
				Hg: N.D	
				Br: N.D	
172	172	All	XRF + Chemical	Cd: Inconclusive	Cd: N.D(<2.0) Pb: See remark
				Cr: N.D	
				Pb: Inconclusive	
				Hg: N.D	
				Br: N.D	
173	173	All	XRF + Chemical	Cd: Inconclusive	Cd: N.D(<2.0) Pb: See remark
				Cr: N.D	
				Pb: Inconclusive	
				Hg: N.D	
				Br: N.D	
174	174	All	XRF	Cd: N.D	N/T
				Cr: N.D	
				Pb: N.D	
				Hg: N.D	
				Br: N.D	
175	175	All	XRF + Chemical	Cd: N.D	PBBs: N.D(<5.0) PBDEs: N.D(<5.0)
				Cr: N.D	
				Pb: N.D	
				Hg: N.D	
				Br: Inconclusive	
176	176	All	XRF + Chemical	Cd: N.D	Cr <sup>6+</sup> : Negative
				Cr: Inconclusive	
				Pb: N.D	
				Hg: N.D	
				Br: N.D	
177	177	All	XRF + Chemical	Cd: N.D	Cr <sup>6+</sup> : Negative
				Cr: Inconclusive	
				Pb: N.D	
				Hg: N.D	
				Br: N.D	
178	178	All	XRF + Chemical	Cd: N.D	Cr <sup>6+</sup> : Negative
				Cr: Inconclusive	
				Pb: N.D	
				Hg: N.D	
				Br: N.D	
179	179	All	XRF + Chemical	Cd: N.D	Cr <sup>6+</sup> : Negative
				Cr: Inconclusive	
				Pb: N.D	
				Hg: N.D	
				Br: N.D	

## VERIFICATION REPORT

TESTED MATERIAL	SCHEME	TARGET RoHS SUBSTANCES	TEST METHOD USED	XRF RESULT ( in mg/kg )	CHEMICAL TEST RESULT ( in mg/kg )
180	180	All	XRF	Cd: N.D	N/T
				Cr: N.D	
				Pb: N.D	
				Hg: N.D	
				Br: N.D	
181	181	All	XRF	Cd: N.D	N/T
				Cr: N.D	
				Pb: N.D	
				Hg: N.D	
				Br: N.D	
182	182	All	XRF	Cd: N.D	N/T
				Cr: N.D	
				Pb: N.D	
				Hg: N.D	
				Br: N.D	
183	183	All	XRF	Cd: N.D	N/T
				Cr: N.D	
				Pb: N.D	
				Hg: N.D	
				Br: N.D	
184	184	All	XRF	Cd: N.D	N/T
				Cr: N.D	
				Pb: N.D	
				Hg: N.D	
				Br: N.D	
185	185	All	XRF	Cd: N.D	N/T
				Cr: N.D	
				Pb: N.D	
				Hg: N.D	
				Br: N.D	
186	186	All	XRF	Cd: N.D	N/T
				Cr: N.D	
				Pb: N.D	
				Hg: N.D	
				Br: N.D	
187	187	All	XRF	Cd: N.D	N/T
				Cr: N.D	
				Pb: N.D	
				Hg: N.D	
				Br: N.D	
188	188	All	XRF	Cd: N.D	N/T
				Cr: N.D	
				Pb: N.D	
				Hg: N.D	
				Br: N.D	

## VERIFICATION REPORT

TESTED MATERIAL	SCHEME	TARGET RoHS SUBSTANCES	TEST METHOD USED	XRF RESULT ( in mg/kg )	CHEMICAL TEST RESULT ( in mg/kg )
189	189	All	XRF	Cd: N.D	N/T
				Cr: N.D	
				Pb: N.D	
				Hg: N.D	
				Br: N.D	
190	190	All	XRF	Cd: N.D	N/T
				Cr: N.D	
				Pb: N.D	
				Hg: N.D	
				Br: N.D	
191	191	All	XRF	Cd: N.D	N/T
				Cr: N.D	
				Pb: N.D	
				Hg: N.D	
				Br: N.D	
192	192	All	XRF + Chemical	Cd: N.D	Cr <sup>6+</sup> : Negative
				Cr: Inconclusive	
				Pb: N.D	
				Hg: N.D	
				Br: N.D	
193	193	All	XRF	Cd: N.D	N/T
				Cr: N.D	
				Pb: N.D	
				Hg: N.D	
				Br: N.D	
194	194	All	XRF	Cd: N.D	N/T
				Cr: N.D	
				Pb: N.D	
				Hg: N.D	
				Br: N.D	
195	195	All	XRF	Cd: N.D	N/T
				Cr: N.D	
				Pb: N.D	
				Hg: N.D	
				Br: N.D	
196	196	All	XRF	Cd: N.D	N/T
				Cr: N.D	
				Pb: N.D	
				Hg: N.D	
				Br: N.D	
197	197	All	XRF + Chemical	Cd: N.D	Cr <sup>6+</sup> : Negative
				Cr: Inconclusive	
				Pb: N.D	
				Hg: N.D	
				Br: N.D	

## VERIFICATION REPORT

TESTED MATERIAL	SCHEME	TARGET RoHS SUBSTANCES	TEST METHOD USED	XRF RESULT ( in mg/kg )	CHEMICAL TEST RESULT ( in mg/kg )
198	198	All	XRF	Cd: N.D	N/T
				Cr: N.D	
				Pb: N.D	
				Hg: N.D	
				Br: N.D	
199	199	All	XRF	Cd: N.D	N/T
				Cr: N.D	
				Pb: N.D	
				Hg: N.D	
				Br: N.D	
200	200	All	XRF	Cd: N.D	N/T
				Cr: N.D	
				Pb: N.D	
				Hg: N.D	
				Br: N.D	
201	201	All	XRF	Cd: N.D	N/T
				Cr: N.D	
				Pb: N.D	
				Hg: N.D	
				Br: N.D	
202	202	All	XRF	Cd: N.D	N/T
				Cr: N.D	
				Pb: N.D	
				Hg: N.D	
				Br: N.D	
203	203	All	XRF	Cd: N.D	N/T
				Cr: N.D	
				Pb: N.D	
				Hg: N.D	
				Br: N.D	
204	204	All	XRF	Cd: N.D	N/T
				Cr: N.D	
				Pb: N.D	
				Hg: N.D	
				Br: N.D	
205	205	All	XRF	Cd: N.D	N/T
				Cr: N.D	
				Pb: N.D	
				Hg: N.D	
				Br: N.D	
206	206	All	XRF + Chemical	Cd: N.D	Cr <sup>6+</sup> : N.D(<1.0)
				Cr: Inconclusive	
				Pb: N.D	
				Hg: N.D	
				Br: N.D	



## VERIFICATION REPORT

TESTED MATERIAL	SCHEME	TARGET RoHS SUBSTANCES	TEST METHOD USED	XRF RESULT ( in mg/kg )	CHEMICAL TEST RESULT ( in mg/kg )
207	207	All	XRF	Cd: N.D	N/T
				Cr: N.D	
				Pb: N.D	
				Hg: N.D	
				Br: N.D	
208	208	All	XRF	Cd: N.D	N/T
				Cr: N.D	
				Pb: N.D	
				Hg: N.D	
				Br: N.D	
209	209	All	XRF	Cd: N.D	N/T
				Cr: N.D	
				Pb: N.D	
				Hg: N.D	
				Br: N.D	
210	210	All	XRF + Chemical	Cd: N.D	PBBs: N.D(<5.0) PBDEs: N.D(<5.0)
				Cr: N.D	
				Pb: N.D	
				Hg: N.D	
				Br: Inconclusive	
211	211	All	XRF + Chemical	Cd: N.D	PBBs: N.D(<5.0) PBDEs: N.D(<5.0)
				Cr: N.D	
				Pb: N.D	
				Hg: N.D	
				Br: Inconclusive	
212	212	All	XRF	Cd: N.D	N/T
				Cr: N.D	
				Pb: N.D	
				Hg: N.D	
				Br: N.D	
213	213	All	XRF	Cd: N.D	N/T
				Cr: N.D	
				Pb: N.D	
				Hg: N.D	
				Br: N.D	
214	214	All	XRF	Cd: N.D	N/T
				Cr: N.D	
				Pb: N.D	
				Hg: N.D	
				Br: N.D	
215	215	All	XRF	Cd: N.D	N/T
				Cr: N.D	
				Pb: N.D	
				Hg: N.D	
				Br: N.D	

## VERIFICATION REPORT

TESTED MATERIAL	SCHEME	TARGET RoHS SUBSTANCES	TEST METHOD USED	XRF RESULT ( in mg/kg )	CHEMICAL TEST RESULT ( in mg/kg )
216	216	All	XRF	Cd: N.D	N/T
				Cr: N.D	
				Pb: N.D	
				Hg: N.D	
				Br: N.D	
217	217	All	XRF	Cd: N.D	N/T
				Cr: N.D	
				Pb: N.D	
				Hg: N.D	
				Br: N.D	
218	218	All	XRF + Chemical	Cd: N.D	Cr <sup>6+</sup> : Negative
				Cr: Inconclusive	
				Pb: N.D	
				Hg: N.D	
				Br: N.D	
219	219	All	XRF + Chemical	Cd: N.D	Cr <sup>6+</sup> : Negative
				Cr: Inconclusive	
				Pb: N.D	
				Hg: N.D	
				Br: N.D	
220	220	All	XRF	Cd: N.D	N/T
				Cr: N.D	
				Pb: N.D	
				Hg: N.D	
				Br: N.D	
221	221	All	XRF	Cd: N.D	N/T
				Cr: N.D	
				Pb: N.D	
				Hg: N.D	
				Br: N.D	
222	222	All	XRF	Cd: N.D	N/T
				Cr: N.D	
				Pb: N.D	
				Hg: N.D	
				Br: N.D	
223	223	All	XRF	Cd: N.D	N/T
				Cr: N.D	
				Pb: N.D	
				Hg: N.D	
				Br: N.D	
224	224	All	XRF	Cd: N.D	N/T
				Cr: N.D	
				Pb: N.D	
				Hg: N.D	
				Br: N.D	

## VERIFICATION REPORT

TESTED MATERIAL	SCHEME	TARGET RoHS SUBSTANCES	TEST METHOD USED	XRF RESULT ( in mg/kg )	CHEMICAL TEST RESULT ( in mg/kg )
225	225	All	XRF	Cd: N.D	N/T
				Cr: N.D	
				Pb: N.D	
				Hg: N.D	
				Br: N.D	
226	226	All	XRF	Cd: N.D	N/T
				Cr: N.D	
				Pb: N.D	
				Hg: N.D	
				Br: N.D	
227	227	All	XRF	Cd: N.D	N/T
				Cr: N.D	
				Pb: N.D	
				Hg: N.D	
				Br: N.D	
228	228	All	XRF	Cd: N.D	N/T
				Cr: N.D	
				Pb: N.D	
				Hg: N.D	
				Br: N.D	
229	229	All	XRF	Cd: N.D	N/T
				Cr: N.D	
				Pb: N.D	
				Hg: N.D	
				Br: N.D	
230	230	All	XRF	Cd: N.D	N/T
				Cr: N.D	
				Pb: N.D	
				Hg: N.D	
				Br: N.D	
231	231	All	XRF	Cd: N.D	N/T
				Cr: N.D	
				Pb: N.D	
				Hg: N.D	
				Br: N.D	
232	232	All	XRF	Cd: N.D	N/T
				Cr: N.D	
				Pb: N.D	
				Hg: N.D	
				Br: N.D	
233	233	All	XRF	Cd: N.D	N/T
				Cr: N.D	
				Pb: N.D	
				Hg: N.D	
				Br: N.D	

## VERIFICATION REPORT

TESTED MATERIAL	SCHEME	TARGET RoHS SUBSTANCES	TEST METHOD USED	XRF RESULT ( in mg/kg )	CHEMICAL TEST RESULT ( in mg/kg )
234	234	All	XRF	Cd: N.D	N/T
				Cr: N.D	
				Pb: N.D	
				Hg: N.D	
				Br: N.D	
235	235	All	XRF	Cd: N.D	N/T
				Cr: N.D	
				Pb: N.D	
				Hg: N.D	
				Br: N.D	
236	236	All	XRF	Cd: N.D	N/T
				Cr: N.D	
				Pb: N.D	
				Hg: N.D	
				Br: N.D	
237	237	All	XRF	Cd: N.D	N/T
				Cr: N.D	
				Pb: N.D	
				Hg: N.D	
				Br: N.D	
238	238	All	XRF	Cd: N.D	N/T
				Cr: N.D	
				Pb: N.D	
				Hg: N.D	
				Br: N.D	
239	239	All	XRF	Cd: N.D	N/T
				Cr: N.D	
				Pb: N.D	
				Hg: N.D	
				Br: N.D	
240	240	All	XRF	Cd: N.D	N/T
				Cr: N.D	
				Pb: N.D	
				Hg: N.D	
				Br: N.D	
241	241	All	XRF	Cd: N.D	N/T
				Cr: N.D	
				Pb: N.D	
				Hg: N.D	
				Br: N.D	
242	242	All	XRF	Cd: N.D	N/T
				Cr: N.D	
				Pb: N.D	
				Hg: N.D	
				Br: N.D	

## VERIFICATION REPORT

TESTED MATERIAL	SCHEME	TARGET RoHS SUBSTANCES	TEST METHOD USED	XRF RESULT ( in mg/kg )	CHEMICAL TEST RESULT ( in mg/kg )
243	243	All	XRF	Cd: N.D	N/T
				Cr: N.D	
				Pb: N.D	
				Hg: N.D	
				Br: N.D	
244	244	All	XRF	Cd: N.D	N/T
				Cr: N.D	
				Pb: N.D	
				Hg: N.D	
				Br: N.D	
245	245	All	XRF + Chemical	Cd: N.D	PBBs: N.D(<5.0) PBDEs: N.D(<5.0)
				Cr: N.D	
				Pb: N.D	
				Hg: N.D	
				Br: Inconclusive	
246	246	All	XRF	Cd: N.D	N/T
				Cr: N.D	
				Pb: N.D	
				Hg: N.D	
				Br: N.D	
247	247	All	XRF	Cd: N.D	N/T
				Cr: N.D	
				Pb: N.D	
				Hg: N.D	
				Br: N.D	
248	248	All	XRF	Cd: N.D	N/T
				Cr: N.D	
				Pb: N.D	
				Hg: N.D	
				Br: N.D	
249	249	All	XRF + Chemical	Cd: N.D	PBBs: N.D(<5.0) PBDEs: N.D(<5.0)
				Cr: N.D	
				Pb: N.D	
				Hg: N.D	
				Br: Inconclusive	
250	250	All	XRF	Cd: N.D	N/T
				Cr: N.D	
				Pb: N.D	
				Hg: N.D	
				Br: N.D	
251	251	All	XRF	Cd: N.D	N/T
				Cr: N.D	
				Pb: N.D	
				Hg: N.D	
				Br: N.D	

## VERIFICATION REPORT

TESTED MATERIAL	SCHEME	TARGET RoHS SUBSTANCES	TEST METHOD USED	XRF RESULT ( in mg/kg )	CHEMICAL TEST RESULT ( in mg/kg )
252	252	All	XRF + Chemical	Cd: N.D	PBBs: N.D(<5.0) PBDEs: N.D(<5.0)
				Cr: N.D	
				Pb: N.D	
				Hg: N.D	
				Br: Inconclusive	
253	253	All	XRF	Cd: N.D	N/T
				Cr: N.D	
				Pb: N.D	
				Hg: N.D	
				Br: N.D	
254	254	All	XRF + Chemical	Cd: N.D	PBBs: N.D(<5.0) PBDEs: N.D(<5.0)
				Cr: N.D	
				Pb: N.D	
				Hg: N.D	
				Br: Inconclusive	
255	255	All	XRF + Chemical	Cd: N.D	Cr <sup>6+</sup> : Negative
				Cr: Inconclusive	
				Pb: N.D	
				Hg: N.D	
				Br: N.D	
256	256	All	XRF + Chemical	Cd: N.D	Cr <sup>6+</sup> : Negative
				Cr: Inconclusive	
				Pb: N.D	
				Hg: N.D	
				Br: N.D	
257	257	All	XRF	Cd: N.D	N/T
				Cr: N.D	
				Pb: N.D	
				Hg: N.D	
				Br: N.D	
258	258	All	XRF	Cd: N.D	N/T
				Cr: N.D	
				Pb: N.D	
				Hg: N.D	
				Br: N.D	
259	259	All	XRF	Cd: N.D	N/T
				Cr: N.D	
				Pb: N.D	
				Hg: N.D	
				Br: N.D	
260	260	All	XRF	Cd: N.D	N/T
				Cr: N.D	
				Pb: N.D	
				Hg: N.D	
				Br: N.D	

## VERIFICATION REPORT

TESTED MATERIAL	SCHEME	TARGET RoHS SUBSTANCES	TEST METHOD USED	XRF RESULT ( in mg/kg )	CHEMICAL TEST RESULT ( in mg/kg )
261	261	All	XRF	Cd: N.D	N/T
				Cr: N.D	
				Pb: N.D	
				Hg: N.D	
				Br: N.D	
262	262	All	XRF	Cd: N.D	N/T
				Cr: N.D	
				Pb: N.D	
				Hg: N.D	
				Br: N.D	
263	263	All	XRF	Cd: N.D	N/T
				Cr: N.D	
				Pb: N.D	
				Hg: N.D	
				Br: N.D	
264	264	All	XRF	Cd: N.D	N/T
				Cr: N.D	
				Pb: N.D	
				Hg: N.D	
				Br: N.D	
265	265	All	XRF + Chemical	Cd: N.D	PBBs: N.D(<5.0) PBDEs: N.D(<5.0)
				Cr: N.D	
				Pb: N.D	
				Hg: N.D	
				Br: Inconclusive	
266	266	All	XRF	Cd: N.D	N/T
				Cr: N.D	
				Pb: N.D	
				Hg: N.D	
				Br: N.D	
267	267	All	XRF + Chemical	Cd: N.D	Cr <sup>6+</sup> : Negative
				Cr: Inconclusive	
				Pb: N.D	
				Hg: N.D	
				Br: N.D	
268	268	All	XRF + Chemical	Cd: N.D	Cr <sup>6+</sup> : Negative
				Cr: Inconclusive	
				Pb: N.D	
				Hg: N.D	
				Br: N.D	
269	269	All	XRF + Chemical	Cd: N.D	Cr <sup>6+</sup> : Negative
				Cr: Inconclusive	
				Pb: N.D	
				Hg: N.D	
				Br: N.D	

## VERIFICATION REPORT

TESTED MATERIAL	SCHEME	TARGET RoHS SUBSTANCES	TEST METHOD USED	XRF RESULT ( in mg/kg )	CHEMICAL TEST RESULT ( in mg/kg )
270	270	All	XRF	Cd: N.D	N/T
				Cr: N.D	
				Pb: N.D	
				Hg: N.D	
				Br: N.D	
271	271	All	XRF	Cd: N.D	N/T
				Cr: N.D	
				Pb: N.D	
				Hg: N.D	
				Br: N.D	
272	272	All	XRF	Cd: N.D	N/T
				Cr: N.D	
				Pb: N.D	
				Hg: N.D	
				Br: N.D	
273	273	All	XRF + Chemical	Cd: Inconclusive	Cd: N.D(<2.0) Pb: See remark
				Cr: N.D	
				Pb: Inconclusive	
				Hg: N.D	
				Br: N.D	
274	274	All	XRF	Cd: N.D	N/T
				Cr: N.D	
				Pb: N.D	
				Hg: N.D	
				Br: N.D	
275	275	All	XRF + Chemical	Cd: N.D	PBBs: N.D(<5.0) PBDEs: N.D(<5.0)
				Cr: N.D	
				Pb: N.D	
				Hg: N.D	
				Br: Inconclusive	
276	276	All	XRF	Cd: N.D	N/T
				Cr: N.D	
				Pb: N.D	
				Hg: N.D	
				Br: N.D	
277	277	All	XRF + Chemical	Cd: N.D	PBBs: N.D(<5.0) PBDEs: N.D(<5.0)
				Cr: N.D	
				Pb: N.D	
				Hg: N.D	
				Br: Inconclusive	
278	278	All	XRF + Chemical	Cd: N.D	Cr <sup>6+</sup> : Negative
				Cr: Inconclusive	
				Pb: N.D	
				Hg: N.D	
				Br: N.D	



## VERIFICATION REPORT

TESTED MATERIAL	SCHEME	TARGET RoHS SUBSTANCES	TEST METHOD USED	XRF RESULT ( in mg/kg )	CHEMICAL TEST RESULT ( in mg/kg )
279	279	All	XRF + Chemical	Cd: N.D	Cr <sup>6+</sup> : Negative
				Cr: Inconclusive	
				Pb: N.D	
				Hg: N.D	
280	280	All	XRF + Chemical	Br: N.D	Cr <sup>6+</sup> : Negative
				Cd: N.D	
				Cr: Inconclusive	
				Pb: N.D	
281	281	All	XRF + Chemical	Hg: N.D	Cr <sup>6+</sup> : Negative
				Br: N.D	
				Cd: N.D	
				Cr: Inconclusive	
282	282	All	XRF	Pb: N.D	N/T
				Hg: N.D	
				Cr: N.D	
				Br: N.D	
283	283	All	XRF	Pb: N.D	N/T
				Hg: N.D	
				Cr: N.D	
				Br: N.D	
284	284	All	XRF	Pb: N.D	N/T
				Hg: N.D	
				Cr: N.D	
				Br: N.D	
285	285	All	XRF + Chemical	Cr: Inconclusive	Cr <sup>6+</sup> : N.D(<1.0)
				Pb: N.D	
				Hg: N.D	
				Br: N.D	
286	286	All	XRF + Chemical	Cr: N.D	PBBs: N.D(<5.0) PBDEs: N.D(<5.0)
				Pb: N.D	
				Hg: N.D	
				Br: Inconclusive	
287	287	All	XRF + Chemical	Cr: Inconclusive	Cr <sup>6+</sup> : N.D(<1.0)
				Pb: N.D	
				Hg: N.D	
				Br: N.D	

## VERIFICATION REPORT

TESTED MATERIAL	SCHEME	TARGET RoHS SUBSTANCES	TEST METHOD USED	XRF RESULT ( in mg/kg )	CHEMICAL TEST RESULT ( in mg/kg )
288	288	All	XRF	Cd: N.D	N/T
				Cr: N.D	
				Pb: N.D	
				Hg: N.D	
				Br: N.D	
289	289	All	XRF	Cd: N.D	N/T
				Cr: N.D	
				Pb: N.D	
				Hg: N.D	
				Br: N.D	
290	290	All	XRF	Cd: N.D	N/T
				Cr: N.D	
				Pb: N.D	
				Hg: N.D	
				Br: N.D	
291	291	All	XRF	Cd: N.D	N/T
				Cr: N.D	
				Pb: N.D	
				Hg: N.D	
				Br: N.D	
292	292	All	XRF	Cd: N.D	N/T
				Cr: N.D	
				Pb: N.D	
				Hg: N.D	
				Br: N.D	
293	293	All	XRF	Cd: N.D	N/T
				Cr: N.D	
				Pb: N.D	
				Hg: N.D	
				Br: N.D	
294	294	All	XRF	Cd: N.D	N/T
				Cr: N.D	
				Pb: N.D	
				Hg: N.D	
				Br: N.D	
295	295	All	XRF	Cd: N.D	N/T
				Cr: N.D	
				Pb: N.D	
				Hg: N.D	
				Br: N.D	
296	296	All	XRF	Cd: N.D	N/T
				Cr: N.D	
				Pb: N.D	
				Hg: N.D	
				Br: N.D	

## VERIFICATION REPORT

TESTED MATERIAL	SCHEME	TARGET RoHS SUBSTANCES	TEST METHOD USED	XRF RESULT ( in mg/kg )	CHEMICAL TEST RESULT ( in mg/kg )
297	297	All	XRF	Cd: N.D	N/T
				Cr: N.D	
				Pb: N.D	
				Hg: N.D	
				Br: N.D	
298	298	All	XRF + Chemical	Cd: N.D	Cr <sup>6+</sup> : Negative
				Cr: Inconclusive	
				Pb: N.D	
				Hg: N.D	
				Br: N.D	
299	299	All	XRF	Cd: N.D	N/T
				Cr: N.D	
				Pb: N.D	
				Hg: N.D	
				Br: N.D	
300	300	All	XRF	Cd: N.D	N/T
				Cr: N.D	
				Pb: N.D	
				Hg: N.D	
				Br: N.D	
301	301	All	XRF	Cd: N.D	N/T
				Cr: N.D	
				Pb: N.D	
				Hg: N.D	
				Br: N.D	
302	302	All	XRF	Cd: N.D	N/T
				Cr: N.D	
				Pb: N.D	
				Hg: N.D	
				Br: N.D	
303	303	All	XRF	Cd: N.D	N/T
				Cr: N.D	
				Pb: N.D	
				Hg: N.D	
				Br: N.D	
304	304	All	XRF	Cd: N.D	N/T
				Cr: N.D	
				Pb: N.D	
				Hg: N.D	
				Br: N.D	
305	305	All	XRF	Cd: N.D	N/T
				Cr: N.D	
				Pb: N.D	
				Hg: N.D	
				Br: N.D	

## VERIFICATION REPORT

TESTED MATERIAL	SCHEME	TARGET RoHS SUBSTANCES	TEST METHOD USED	XRF RESULT ( in mg/kg )	CHEMICAL TEST RESULT ( in mg/kg )
306	306	All	XRF	Cd: N.D	N/T
				Cr: N.D	
				Pb: N.D	
				Hg: N.D	
				Br: N.D	
307	307	All	XRF	Cd: N.D	N/T
				Cr: N.D	
				Pb: N.D	
				Hg: N.D	
				Br: N.D	
308	308	All	XRF + Chemical	Cd: N.D	Cr <sup>6+</sup> : N.D(<1.0)
				Cr: Inconclusive	
				Pb: N.D	
				Hg: N.D	
				Br: N.D	
309	309	All	XRF + Chemical	Cd: N.D	Cr <sup>6+</sup> : N.D(<1.0) Pb: N.D(<2.0)
				Cr: Inconclusive	
				Pb: Inconclusive	
				Hg: N.D	
				Br: N.D	
310	310	All	XRF	Cd: N.D	N/T
				Cr: N.D	
				Pb: N.D	
				Hg: N.D	
				Br: N.D	
311	311	All	XRF	Cd: N.D	N/T
				Cr: N.D	
				Pb: N.D	
				Hg: N.D	
				Br: N.D	

## VERIFICATION REPORT

(2) To determine Bis(2-ethylhexyl) phthalate (DEHP), Butyl benzyl phthalate(BBP), Dibutyl phthalate(DBP), Diisobutyl phthalate(DIBP):

Tested Item(s)	Content (mg/kg)			RL
	1+54+59	13+23	15+17	
Bis(2-ethylhexyl) phthalate (DEHP)	N.D	N.D	N.D	50.0
Butyl benzyl phthalate(BBP)	N.D	N.D	N.D	50.0
Dibutyl phthalate(DBP)	N.D	N.D	N.D	50.0
Diisobutyl phthalate(DIBP)	N.D	N.D	N.D	50.0

Tested Item(s)	Content (mg/kg)			RL
	18+20+21	25+28	34+37	
Bis(2-ethylhexyl) phthalate (DEHP)	N.D	N.D	N.D	50.0
Butyl benzyl phthalate(BBP)	N.D	N.D	N.D	50.0
Dibutyl phthalate(DBP)	N.D	N.D	N.D	50.0
Diisobutyl phthalate(DIBP)	N.D	N.D	N.D	50.0

Tested Item(s)	Content (mg/kg)			RL
	39+40+41+42	50+53+58	60+61+67+74	
Bis(2-ethylhexyl) phthalate (DEHP)	N.D	1.3×10 <sup>2</sup>	N.D	50.0
Butyl benzyl phthalate(BBP)	N.D	N.D	N.D	50.0
Dibutyl phthalate(DBP)	N.D	N.D	N.D	50.0
Diisobutyl phthalate(DIBP)	N.D	N.D	N.D	50.0

Tested Item(s)	Content (mg/kg)			RL
	63+70+76	68+75+89	93+109+116	
Bis(2-ethylhexyl) phthalate (DEHP)	N.D	N.D	N.D	50.0
Butyl benzyl phthalate(BBP)	N.D	N.D	N.D	50.0
Dibutyl phthalate(DBP)	N.D	N.D	N.D	50.0
Diisobutyl phthalate(DIBP)	N.D	N.D	N.D	50.0

## VERIFICATION REPORT

Tested Item(s)	Content (mg/kg)			RL
	98+108+111+118	123+148+165	150+158+181	
Bis(2-ethylhexyl) phthalate (DEHP)	N.D	N.D	N.D	50.0
Butyl benzyl phthalate(BBP)	N.D	N.D	N.D	50.0
Dibutyl phthalate(DBP)	N.D	N.D	N.D	50.0
Diisobutyl phthalate(DIBP)	N.D	N.D	N.D	50.0

Tested Item(s)	Content (mg/kg)			RL
	151+253	152+155+156	184+187+188	
Bis(2-ethylhexyl) phthalate (DEHP)	N.D	N.D	N.D	50.0
Butyl benzyl phthalate(BBP)	N.D	N.D	N.D	50.0
Dibutyl phthalate(DBP)	N.D	N.D	N.D	50.0
Diisobutyl phthalate(DIBP)	N.D	N.D	N.D	50.0

Tested Item(s)	Content (mg/kg)			RL
	153+189+190+191	194	195	
Bis(2-ethylhexyl) phthalate (DEHP)	N.D	N.D	N.D	50.0
Butyl benzyl phthalate(BBP)	N.D	N.D	N.D	50.0
Dibutyl phthalate(DBP)	N.D	2.2×10 <sup>2</sup>	0.8×10 <sup>3</sup>	50.0
Diisobutyl phthalate(DIBP)	N.D	N.D	N.D	50.0

Tested Item(s)	Content (mg/kg)			RL
	196	209+213+214	222+223+232	
Bis(2-ethylhexyl) phthalate (DEHP)	N.D	N.D	N.D	50.0
Butyl benzyl phthalate(BBP)	N.D	N.D	N.D	50.0
Dibutyl phthalate(DBP)	N.D	N.D	N.D	50.0
Diisobutyl phthalate(DIBP)	N.D	N.D	N.D	50.0

Tested Item(s)	Content (mg/kg)			RL
	243+245	251+274+277	252+254	
Bis(2-ethylhexyl) phthalate (DEHP)	N.D	N.D	N.D	50.0
Butyl benzyl phthalate(BBP)	N.D	N.D	N.D	50.0
Dibutyl phthalate(DBP)	N.D	N.D	N.D	50.0
Diisobutyl phthalate(DIBP)	N.D	N.D	N.D	50.0

## VERIFICATION REPORT

Tested Item(s)	Content (mg/kg)			RL
	258+259+260+261	249+265+286	296+306	
Bis(2-ethylhexyl) phthalate (DEHP)	N.D	N.D	N.D	50.0
Butyl benzyl phthalate(BBP)	N.D	N.D	N.D	50.0
Dibutyl phthalate(DBP)	N.D	N.D	N.D	50.0
Diisobutyl phthalate(DIBP)	N.D	N.D	N.D	50.0

Remark: in the following pages in this report:

- RL = Reporting Limits
- N.D = Not Detected (<RL)
- Detected = below the lower screening limit of table (a) and pass
- Mg/kg = parts per million = ppm
- N/T = Not tested
- Negative = Absence of Cr<sup>6+</sup> coating

- As specified by client, the samples (1, 54 and 59) were tested as a whole by equal weight, below the sample numbers as the same operation as above: (13 and 23), (15 and 17), (18, 20 and 21), (25 and 28), (34 and 37), (39, 40,41 and 42), (50, 53 and 58), (60, 61,67 and 74), (63,70 and 76), (68, 75 and 89), (93, 109 and 116), (98, 108,111 and 118), (123,148 and 165), (150, 158 and 181), (151 and 253), (152, 155 and 156), (184,187 and 188), (153, 189,190 and 191), (209, 213 and 214), (222, 223 and 232), (243 and 245), (251, 274 and 277), (252 and 254), (258, 259, 260 and 261), (249, 265 and 286), (296 and 306).

- As claimed by the information submitted by the supplier of applicant.

- The cadmium content of component (45) is coming from electrical contacts. According to EU RoHS recast directive (2011/65/EU), cadmium and its compounds in electrical contacts can be exempted.

- Component (172) was detected to contain 3.8% lead from the Copper alloy only. According to EU RoHS recast directive (2011/65/EU), lead as an alloying element in copper alloy can be containing up to 4% lead by weight.

- Component (173) was detected to contain 2.3% lead from the Copper alloy only. According to EU RoHS recast directive (2011/65/EU), lead as an alloying element in copper alloy can be containing up to 4% lead by weight.

- Component (273) was detected to contain 3.5% lead from the Copper alloy only. According to EU RoHS recast directive (2011/65/EU), lead as an alloying element in copper alloy can be containing up to 4% lead by weight.

## VERIFICATION REPORT

### TEST METHODS:

- (1) Sample prepared with reference to IEC 62321-2 Ed1.0:2013 Determination of certain substances in electrotechnical products – Part 2: Disassembly, disjunction and mechanical sample preparation;
- (2) Sample Screening testing with reference to IEC 62321-3-1 Ed1.0:2013 Determination of certain substances in electrotechnical products – Part 3-1: Screening – Lead, mercury, Cadmium, total chromium and total bromine using X-ray fluorescence spectrometry;
  - (a) It is the result on total Br while test item on restricted substances is PBBs/PBDEs. It is the result on total Cr while test item on restricted substances is Cr<sup>6+</sup>.
  - (b) Results are obtained by XRF for primary screening, and further chemical testing by ICP-OES(for Cd, Pb, Hg), UV-Vis(for Cr<sup>6+</sup>) and GC/MS(for PBBs, PBDEs) is recommended to be performed.  
XRF screening limits in mg/kg for regulated elements according to IEC 62321-3-1 Ed1.0:2013

ELEMENT	POLYMER	METALS	COMPOSITE MATERIAL
Cd	$BL \leq (70-3\sigma) < X < (130+3\sigma) \leq OL$	$BL \leq (70-3\sigma) < X < (130+3\sigma) \leq OL$	$LOD < X < (150+3\sigma) \leq OL$
Pb	$BL \leq (700-3\sigma) < X < (1300+3\sigma) \leq OL$	$BL \leq (700-3\sigma) < X < (1300+3\sigma) \leq OL$	$BL \leq (500-3\sigma) < X < (1500+3\sigma) \leq OL$
Hg	$BL \leq (700-3\sigma) < X < (1300+3\sigma) \leq OL$	$BL \leq (700-3\sigma) < X < (1300+3\sigma) \leq OL$	$BL \leq (500-3\sigma) < X < (1500+3\sigma) \leq OL$
Cr	$BL \leq (700-3\sigma) < X$	$BL \leq (700-3\sigma) < X$	$BL \leq (500-3\sigma) < X$
Br	$BL \leq (300-3\sigma) < X$	--	$BL \leq (250-3\sigma) < X$

Note: BL = Below Limit, OL = Over Limit, LOD = Limit of Detection, -- = Not Regulated

The XRF screening test for RoHS elements – The reading may be different to the actual content in the sample be of non-uniformity composition.

### (3) Wet Chemical Test Method

TESTING ITEM	CHEMICAL TESTING METHOD	RL	LIMIT
Cd	With reference to IEC 62321-5 Ed1.0:2013, by acid digestion and determined by ICP-OES	2.0mg/kg	100mg/kg
Pb	With reference to IEC 62321-5 Ed1.0:2013, by acid digestion and determined by ICP-OES	2.0mg/kg	1000mg/kg
Hg	With reference to IEC 62321-4 Ed1.0:2013, by acid digestion and determined by ICP-OES	2.0mg/kg	1000mg/kg
Cr <sup>6+</sup> (for non metal)	With reference to IEC 62321-7-2 Ed1.0:2017, by alkaline digestion and determined by UV-VIS spectrophotometer	1.0mg/kg	1000mg/kg
Cr <sup>6+</sup> (for metal)	With reference to IEC 62321-7-1 Ed1.0:2015 by spot – test	0.1µg/cm <sup>2</sup>	1000mg/kg
PBBs Content	With reference to IEC 62321-6 Ed1.0:2015, by solvent extraction and determined by GC-MSD	5.0mg/kg	1000mg/kg
PBDEs Content	With reference to IEC 62321-6 Ed1.0:2015, by solvent extraction and determined by GC-MSD	5.0mg/kg	1000mg/kg

Note: According to IEC 62321-7-1 Ed1.0:2015, result on Cr<sup>6+</sup> for metal sample is shown as Position/Negative.



**VERIFICATION REPORT**

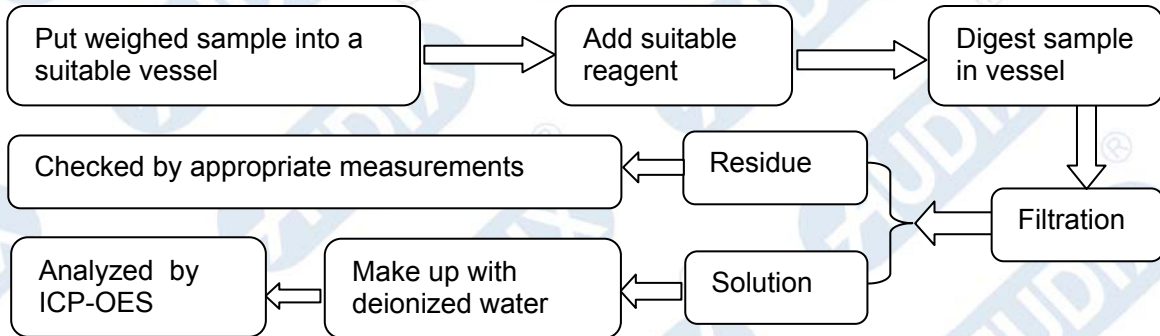
(3) DEHP、BBP、DBP、DIBP Test Method

<u>TESTING ITEM</u>	<u>CHEMICAL TESTING METHOD</u>	<u>RL</u>	<u>LIMIT</u>
DEHP	With reference to IEC 62321-8 Ed1.0:2017, by solvent extraction and determined by GC-MSD	50.0mg/kg	1000mg/kg
BBP	With reference to IEC 62321-8 Ed1.0:2017, by solvent extraction and determined by GC-MSD	50.0mg/kg	1000mg/kg
DBP	With reference to IEC 62321-8 Ed1.0:2017, by solvent extraction and determined by GC-MSD	50.0mg/kg	1000mg/kg
DIBP	With reference to IEC 62321-8 Ed1.0:2017, by solvent extraction and determined by GC-MSD	50.0mg/kg	1000mg/kg

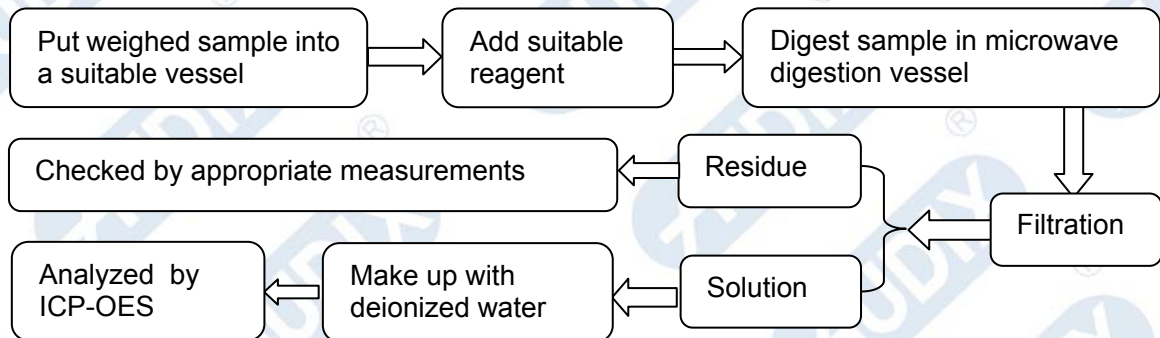
## VERIFICATION REPORT

### TEST PROCESS

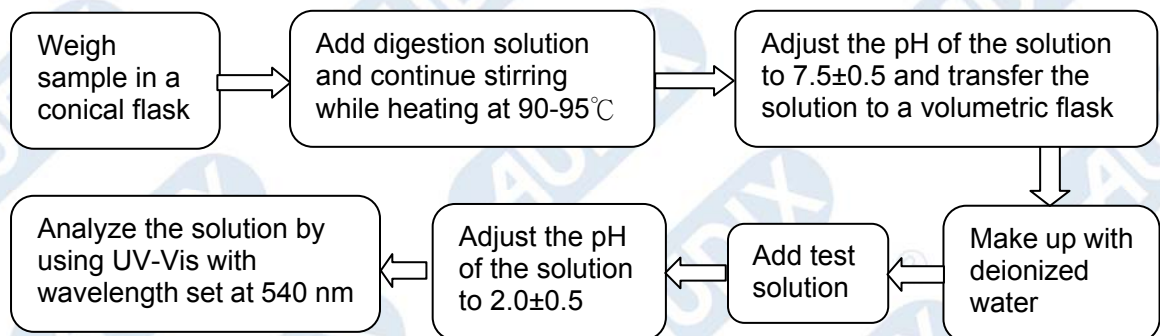
#### 1. Test for Lead (Pb), Cadmium (Cd) contents(IEC 62321-5 Ed1.0:2013):



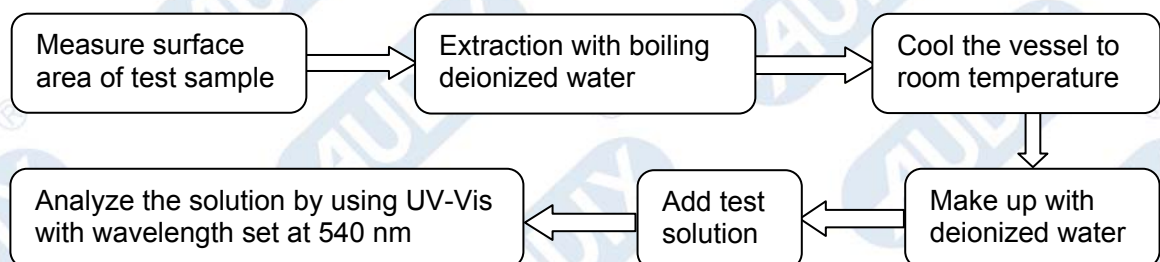
#### 2. Test for Mercury (Hg) contents (IEC 62321-4 Ed1.0:2013):



#### 3. Test for Chromium (Cr(VI)) contents (IEC 62321-7-2 Ed1.0:2017):

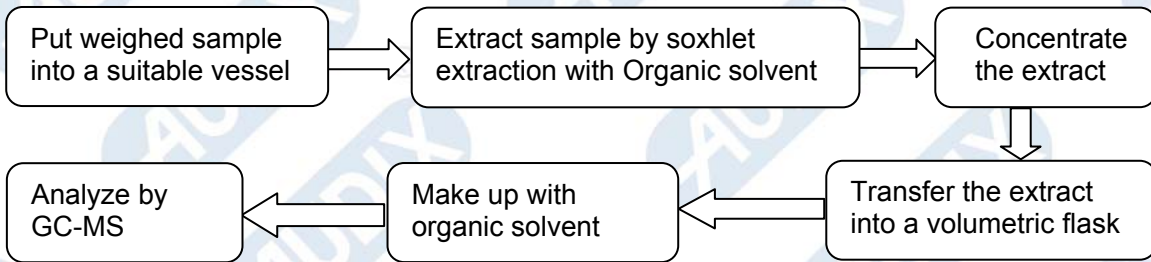


#### 4. Test for Chromium(Cr(VI)) contents (IEC 62321-7-1 Ed1.0:2015):

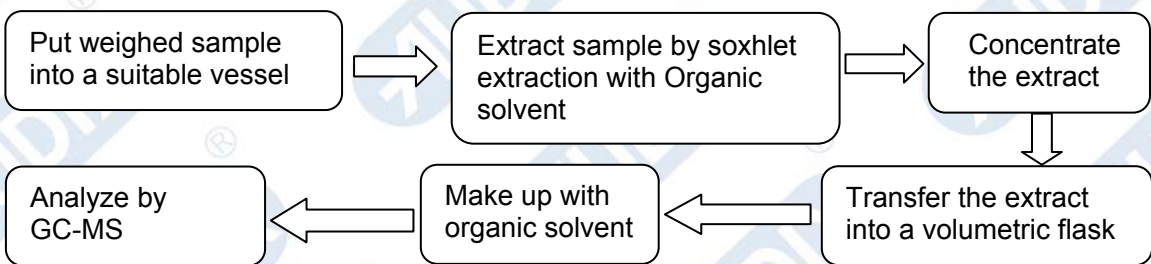


## VERIFICATION REPORT

### 5. Test for PBBs & PBDEs contents (IEC 62321-6 Ed1.0:2015):



### 6. Test for DEHP、DBP、BBP、DIBP contents (IEC 62321-8 Ed1.0:2017):



**VERIFICATION REPORT****INFORMATION OF TEST SAMPLE****(I) Sample description:**

- (1) White label with black printing
- (2) Silver color metal
- (3) Silver color metal
- (4) Silver color metal
- (5) Silver color screw
- (6) Silver color screw
- (7) Silver color screw
- (8) Silver color screw
- (9) Silver color metal
- (10) Silver color screw
- (11) Silver color screw
- (12) Silver color screw
- (13) Black plastic
- (14) Silver color metal
- (15) Transparent plastic
- (16) Silver color metal
- (17) White glue
- (18) Semi-transparent plastic
- (19) Silver color metal pin
- (20) White plastic
- (21) Beige-yellow plastic
- (22) Silver color metal pin
- (23) Black plastic
- (24) Copper color metal pin
- (25) Black rubber
- (26) Black ceramic
- (27) Copper color wires
- (28) Black rubber
- (29) Silver color metal pin
- (30) Silver color metal
- (31) Beige-yellow ceramic
- (32) Silver color wires
- (33) Beige-yellow powder
- (34) Gray plastic with black printing
- (35) White plastic
- (36) Silver color plastic film
- (37) Gray plastic with black printing
- (38) White plastic
- (39) Black plastic with gray printing
- (40) Black plastic
- (41) Beige-yellow plastic
- (42) White plastic
- (43) Silver color metal
- (44) Silver color metal
- (45) Silver/copper color metal
- (46) Copper color metal
- (47) Copper color metal

**Shenzhen Xinhua Testing Measurement Co., Ltd.**Room 4202&4203, Bldg.25, Keyuan West, No.5 Kezhi Road West  
Science and Technology Industrial Park, Nanshan,  
Shenzhen, Guangdong, P.R.China

Tel : (0755) 2663-9005 Fax : (0755) 2663-9006

TRF No.: VP2.0

**VERIFICATION REPORT**

- (48) Copper color metal
- (49) Copper color wires
- (50) Yellow fiberboard
- (51) Copper color wires
- (52) Black ceramic with green printing
- (53) Yellow fiberboard
- (54) Silver color label with black printing
- (55) Black glue
- (56) Brown ceramic with black printing
- (57) Copper color wires
- (58) Yellow fiberboard
- (59) Silver color label with black printing
- (60) Yellow adhesive tape
- (61) Yellow adhesive tape
- (62) Gray ceramic
- (63) Black plastic
- (64) Copper color wires
- (65) Silver color metal
- (66) Silver color label with black printing
- (67) Yellow adhesive tape
- (68) Transparent rubber
- (69) Black ceramic
- (70) Black plastic
- (71) Yellow plastic wire jacket
- (72) Copper color wires
- (73) Copper color wires
- (74) Yellow adhesive tape
- (75) Black ceramic with green printing
- (76) Transparent rubber
- (77) Black plastic
- (78) Black ceramic
- (79) Yellow plastic wire jacket
- (80) Copper color wires
- (81) Silver color label with black printing
- (82) White label with black printing
- (83) Yellow adhesive tape
- (84) Brown plastic
- (85) Black rubber
- (86) Black rubber
- (87) Black ceramic
- (88) Black glue
- (89) Transparent rubber
- (90) Yellow plastic wire jacket
- (91) Copper color wires
- (92) Silver color metal
- (93) Brown plastic with white printing
- (94) Brown plastic
- (95) Semi-transparent paper sheet
- (96) Transparent adhesive tape
- (97) Brown fiberboard
- (98) Black rubber

**VERIFICATION REPORT**

- (99) Silver color metal
- (100) Dull silver color metal
- (101) Dull silver color metal
- (102) Silver color metal
- (103) Silver color metal
- (104) Silver color metal with blue printing
- (105) Black treated metal
- (106) Silver color metal
- (107) Yellow adhesive tape
- (108) Black rubber
- (109) Green plastic with white printing
- (110) Semi-transparent paper sheet
- (111) Black rubber
- (112) Silver color metal
- (113) Dull silver color metal
- (114) Dull silver color metal
- (115) Silver color metal pin
- (116) Black plastic with white printing
- (117) Semi-transparent paper sheet
- (118) Black rubber
- (119) Silver color metal
- (120) Dull silver color metal
- (121) Silver color metal pin
- (122) Silver color metal
- (123) Yellow fiberboard
- (124) Silver color metal
- (125) Silver color metal
- (126) Gray rubber
- (127) Black ceramic
- (128) Silver color screw
- (129) Silver color screw
- (130) Silver color screw
- (131) Black ceramic
- (132) Blue ceramic
- (133) Blue ceramic
- (134) Black ceramic
- (135) Black ceramic
- (136) Black ceramic
- (137) Blue ceramic
- (138) Green ceramic
- (139) Black ceramic
- (140) Black ceramic
- (141) Black ceramic with white printing
- (142) Black ceramic with white printing
- (143) Black ceramic
- (144) Black ceramic
- (145) Black ceramic with white printing
- (146) Black ceramic
- (147) Soldering tin
- (148) Conformal coating with green solder mask & Gold color plated copper color metal pad & Fiberboard

**VERIFICATION REPORT**

- (149) Brown ceramic
- (150) Black plastic
- (151) Yellow label with black printing
- (152) Black rubber
- (153) White plastic
- (154) Silver color metal
- (155) Black plastic wire jacket
- (156) Red plastic wire jacket
- (157) Silver color wires
- (158) Black plastic
- (159) Brown ceramic
- (160) Black ceramic
- (161) Black ceramic
- (162) White glue
- (163) Black ceramic
- (164) Soldering tin
- (165) Conformal coating with green solder mask & Gold color plated copper color metal pad & Fiberboard
- (166) Silver color metal
- (167) Silver color metal
- (168) Silver color metal
- (169) Black treated metal
- (170) Silver color spring
- (171) Copper color wires
- (172) Copper color metal
- (173) Copper color metal
- (174) Brown rubber
- (175) White plastic
- (176) Silver color metal
- (177) Silver color metal
- (178) Silver color metal
- (179) Silver color metal
- (180) Brown plastic
- (181) Black plastic
- (182) Silver color metal
- (183) Soldering tin
- (184) Gray plastic wire jacket
- (185) Silver color metal
- (186) Black rubber
- (187) Yellow/green plastic wire jacket
- (188) Blue plastic wire jacket
- (189) White plastic
- (190) White plastic
- (191) Semi-transparent plastic
- (192) Silver/copper color metal
- (193) Silver color metal
- (194) Black plastic wire jacket
- (195) Yellow plastic wire jacket
- (196) White/orange plastic wire jacket
- (197) Silver color metal
- (198) Silver color metal

## VERIFICATION REPORT

- (199) White label with black printing
- (200) Brown ceramic
- (201) Black ceramic
- (202) Silver color metal
- (203) Black ceramic
- (204) Gary ceramic
- (205) Black ceramic
- (206) Gray ceramic with black printing
- (207) Brown ceramic
- (208) Black ceramic
- (209) Black plastic
- (210) Green plastic
- (211) Red plastic
- (212) Silver color metal pin
- (213) Black plastic
- (214) Black plastic
- (215) Silver color metal pin
- (216) Silver color metal
- (217) Silver/copper color metal
- (218) Silver color metal
- (219) Silver color metal
- (220) Silver color spring
- (221) Copper color metal pin
- (222) Gray plastic
- (223) Black plastic with white printing
- (224) Gray ceramic
- (225) Black ceramic
- (226) Green wires
- (227) Red wires
- (228) Copper color wires
- (229) Blue wires
- (230) Silver color metal
- (231) Silver color metal pin
- (232) Black plastic
- (233) Green plastic
- (234) Yellow plastic
- (235) Silver color metal
- (236) Black plastic with white printing
- (237) Semi-transparent paper sheet
- (238) Black rubber
- (239) Silver color metal
- (240) Dull silver color metal
- (241) Dull silver color metal
- (242) Silver color metal pin
- (243) Beige-yellow plastic
- (244) Silver color metal pin
- (245) Beige-yellow plastic
- (246) Silver color metal pin
- (247) Black ceramic
- (248) Brown ceramic
- (249) Conformal coating with black solder mask & Gold color plated copper color metal pad &



**VERIFICATION REPORT****Fiberboard**

- (250) Soldering tin
- (251) White plastic
- (252) Black plastic
- (253) White label with black printing
- (254) Black plastic
- (255) Silver color metal
- (256) Silver color screw
- (257) Silver color metal
- (258) Black plastic wire jacket
- (259) Blue plastic wire jacket
- (260) Red plastic wire jacket
- (261) Yellow plastic wire jacket
- (262) Black ceramic
- (263) White ceramic
- (264) Soldering tin
- (265) Conformal coating with green solder mask & Gold color plated copper color metal pad & Fiberboard

**Fiberboard**

- (266) Silver color metal
- (267) Silver color metal
- (268) Silver color metal
- (269) Silver color metal
- (270) Silver color spring
- (271) Black treated metal
- (272) Copper color wires
- (273) Copper color metal
- (274) Brown rubber
- (275) Black plastic
- (276) Brown glue
- (277) Beige-yellow plastic
- (278) Silver color metal
- (279) Silver color metal
- (280) Silver color metal
- (281) Silver color metal
- (282) Brown plastic
- (283) Silver color metal
- (284) Silver color metal
- (285) Gray ceramic with black printing
- (286) Conformal coating with green solder mask & Gold color plated copper color metal pad & Fiberboard

**Fiberboard**

- (287) Gray ceramic with black printing
- (288) Black ceramic
- (289) Brown ceramic
- (290) Silver color metal with black printing
- (291) Dull silver color metal
- (292) Dull silver color metal
- (293) Silver color metal pin
- (294) Transparent adhesive tape
- (295) Semi-transparent paper sheet
- (296) Black rubber
- (297) Black plastic

## VERIFICATION REPORT

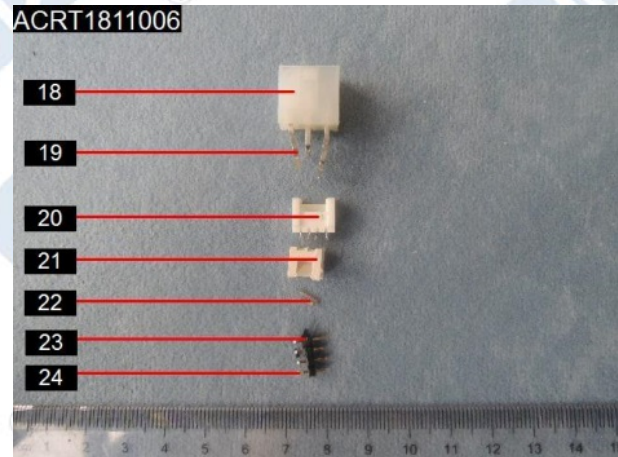
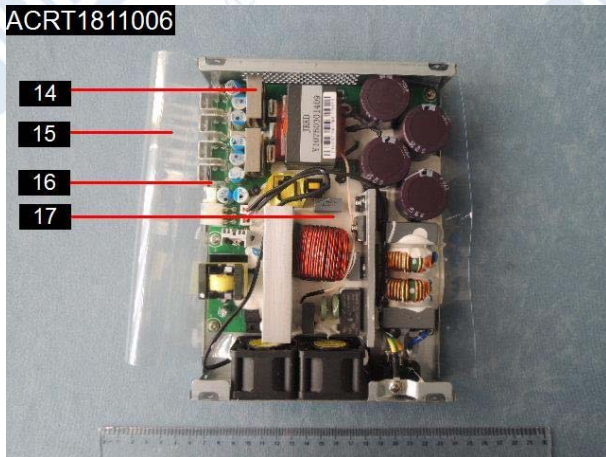
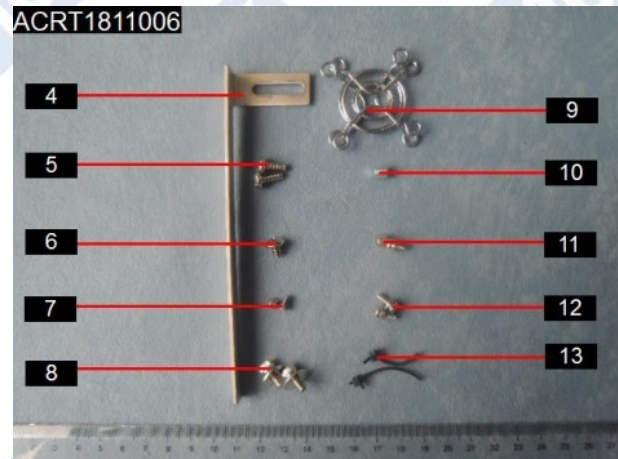
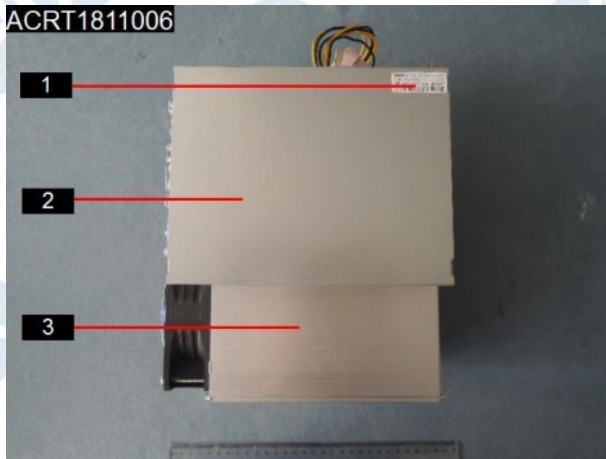
- (298) Silver color metal with red printing
- (299) Black treated metal
- (300) Dull silver color metal
- (301) Silver color metal pin
- (302) Beige-yellow paper
- (303) Semi-transparent paper sheet
- (304) Transparent adhesive tape
- (305) Black plastic
- (306) Black rubber
- (307) Black ceramic
- (308) Brown ceramic
- (309) Black ceramic with white printing
- (310) Brown ceramic
- (311) White label with yellow & black printing

# VERIFICATION REPORT

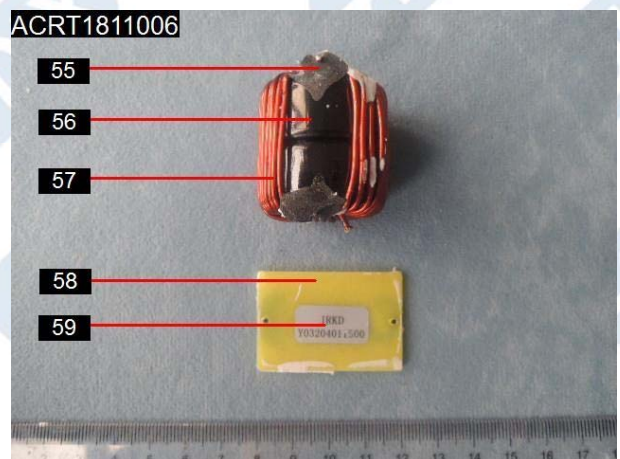
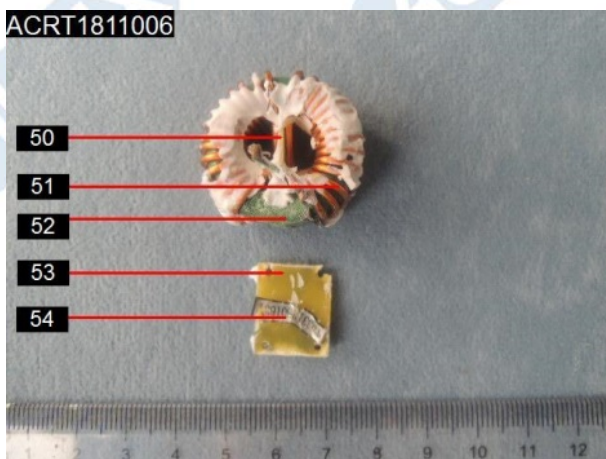
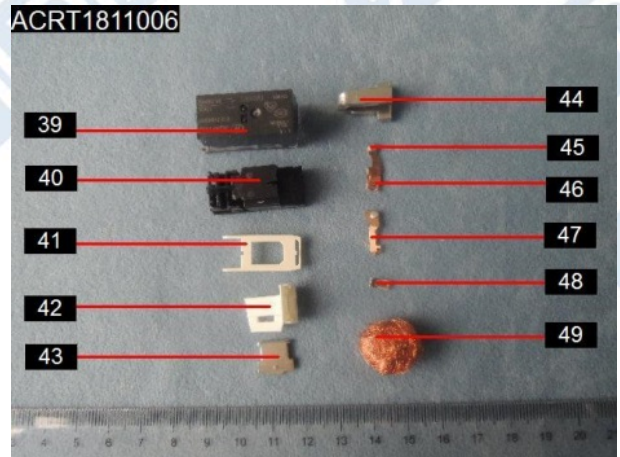
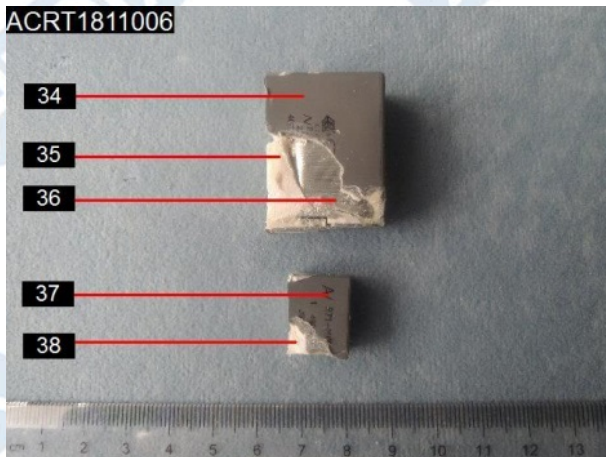
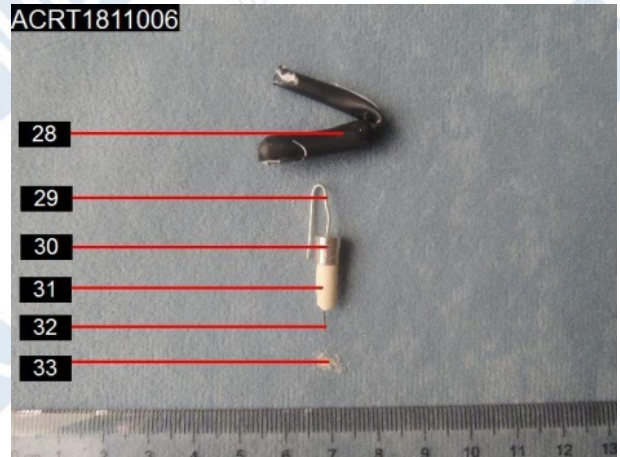
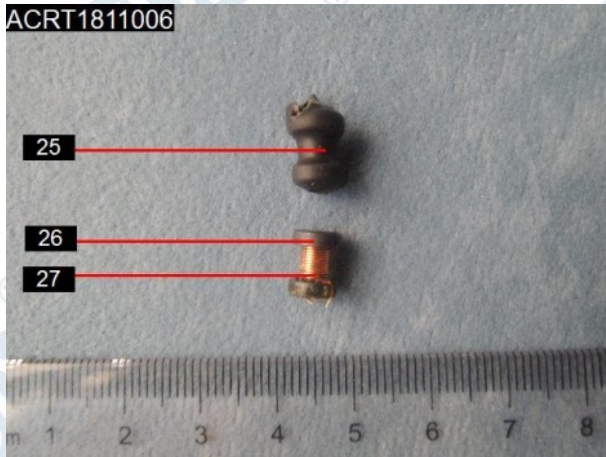
## (II) Photo(s) of test sample(s):



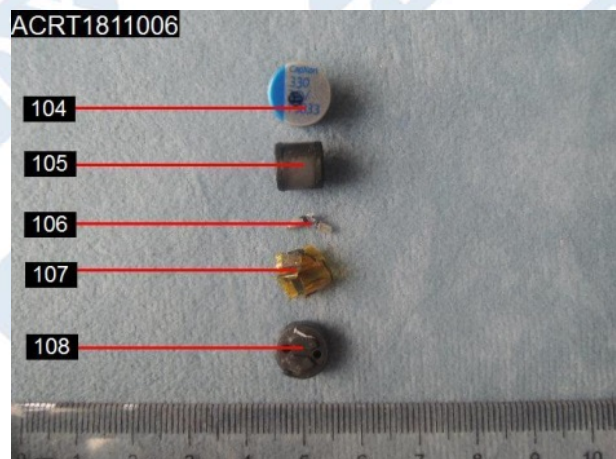
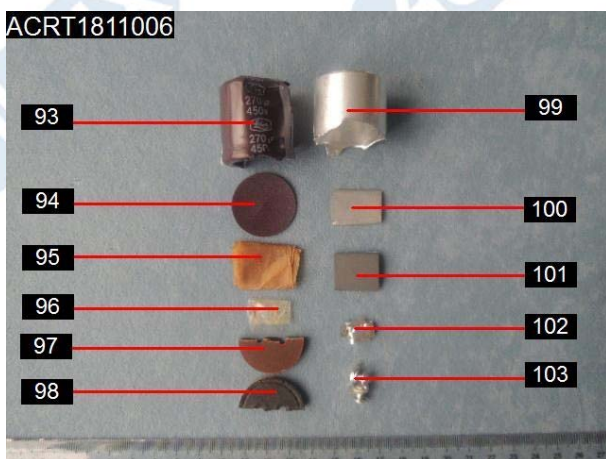
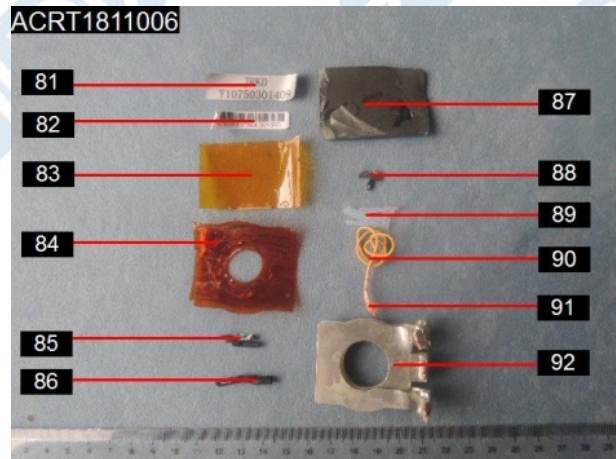
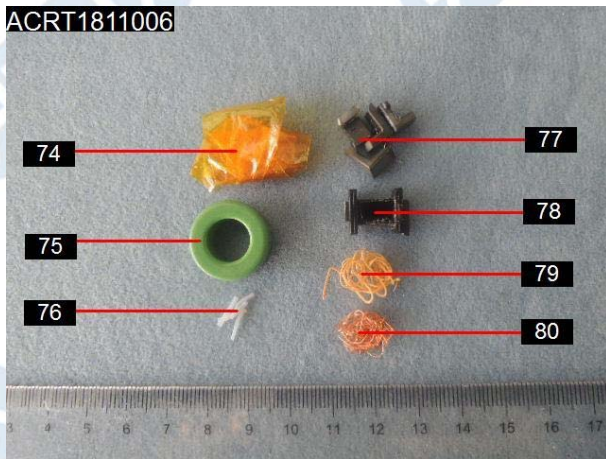
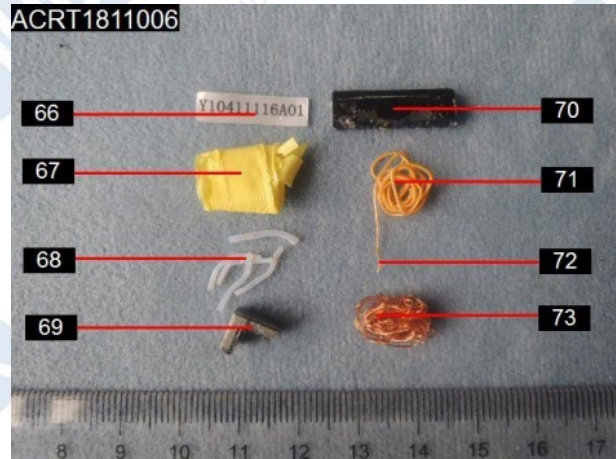
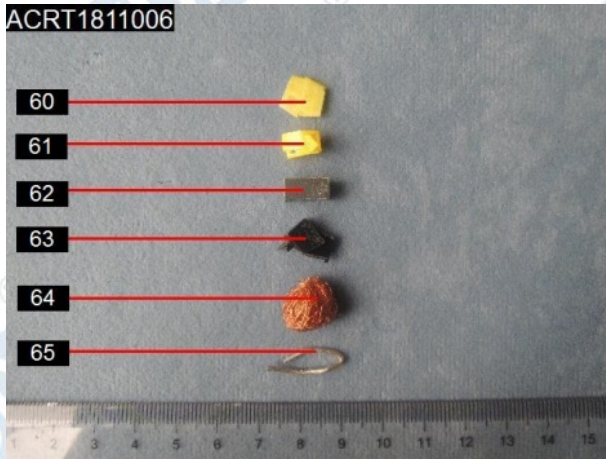
(Whole product)



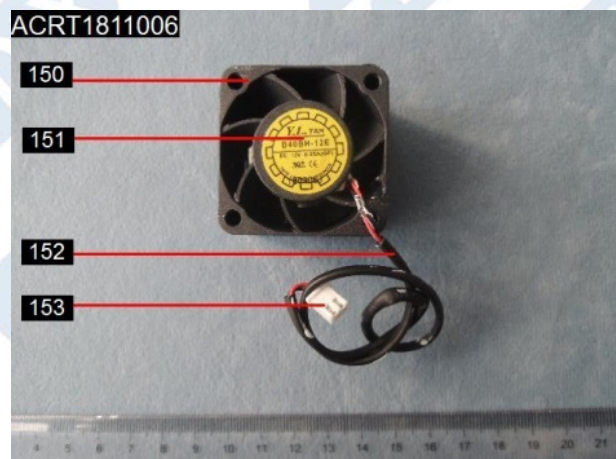
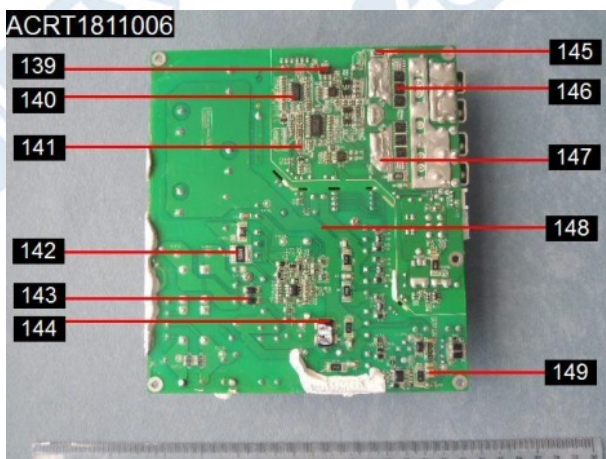
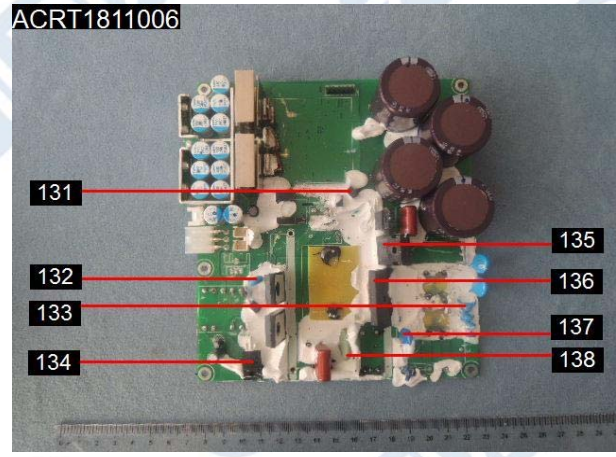
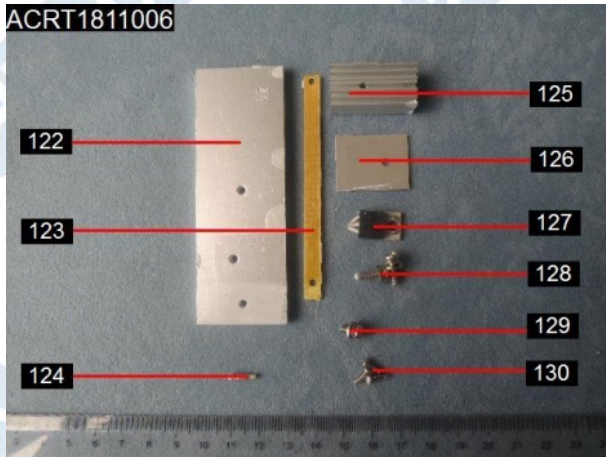
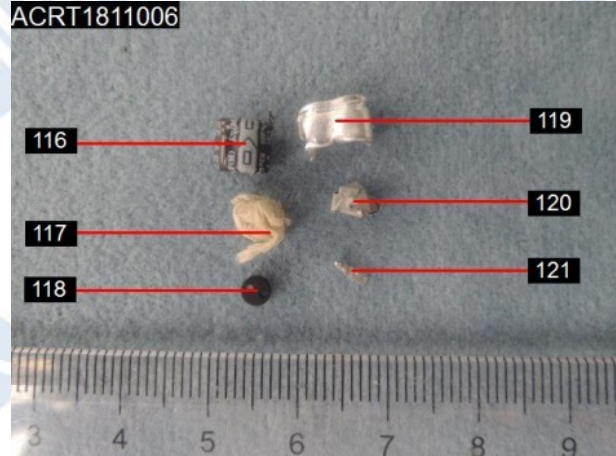
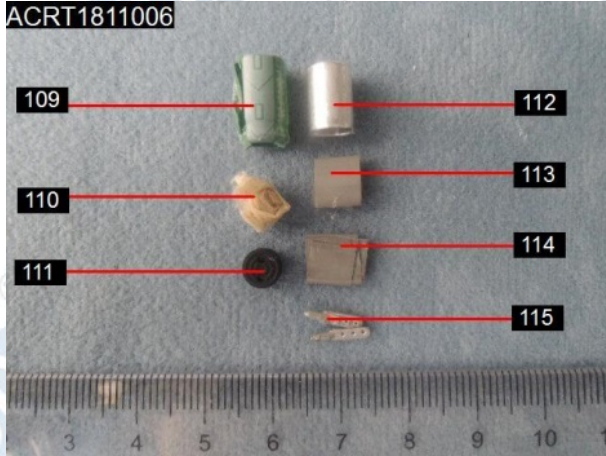
# VERIFICATION REPORT



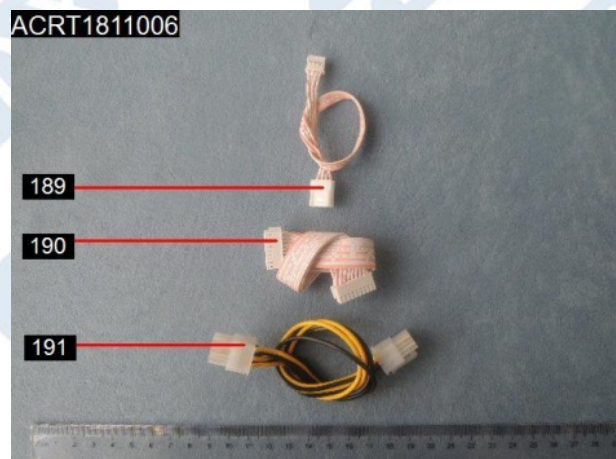
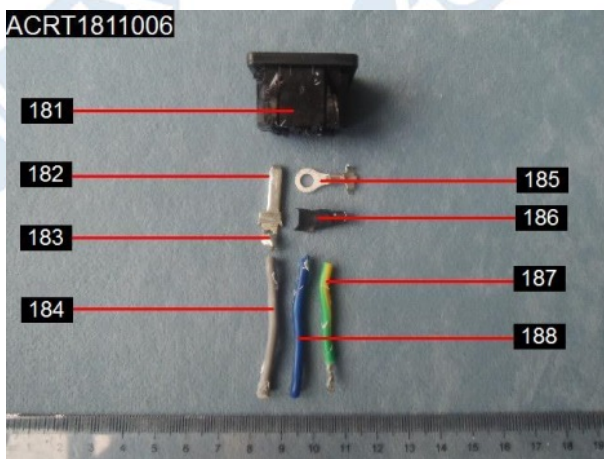
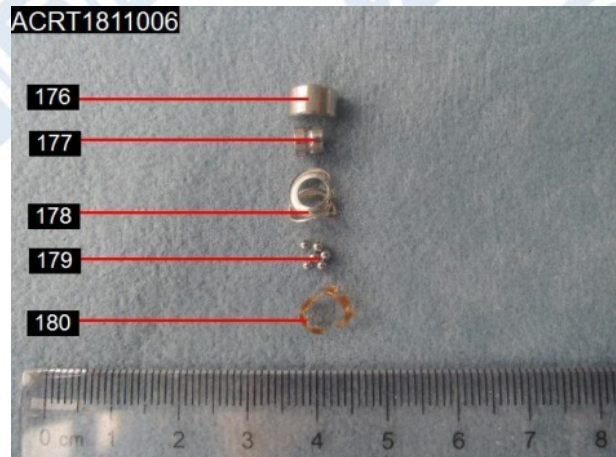
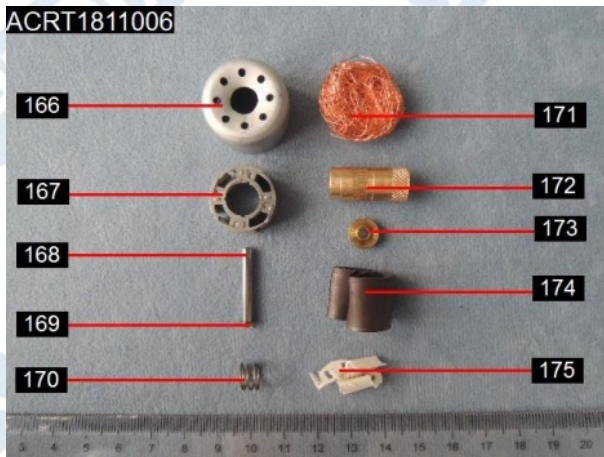
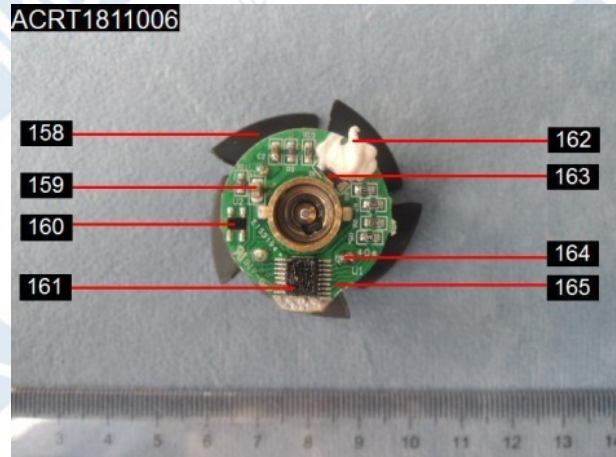
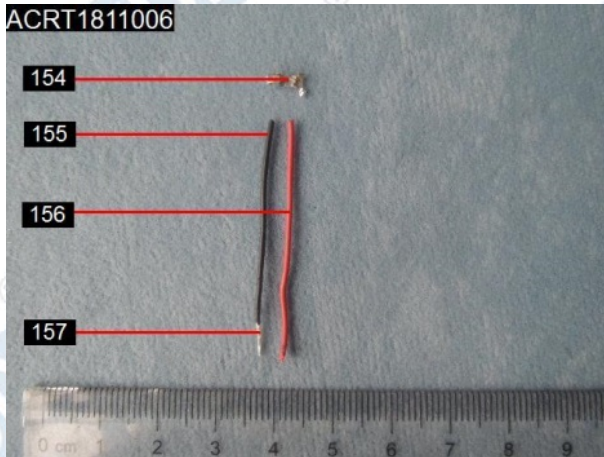
# VERIFICATION REPORT



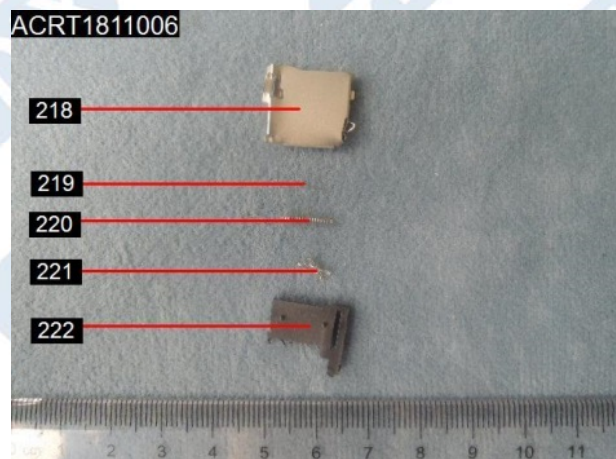
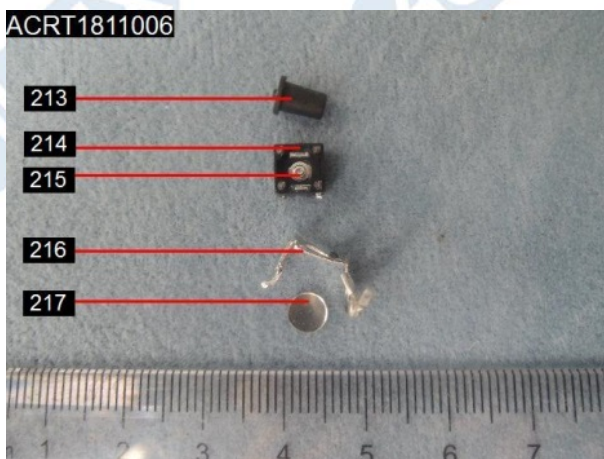
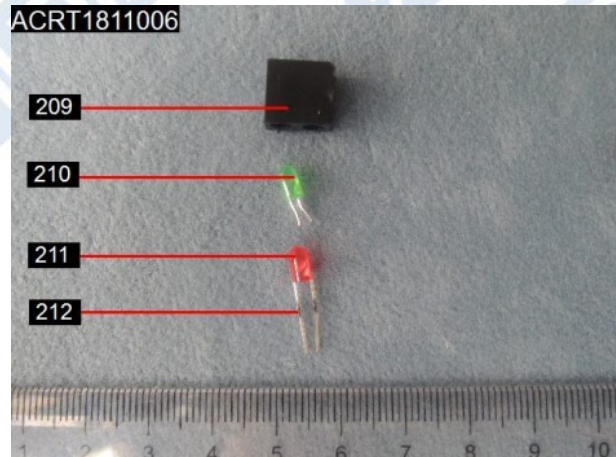
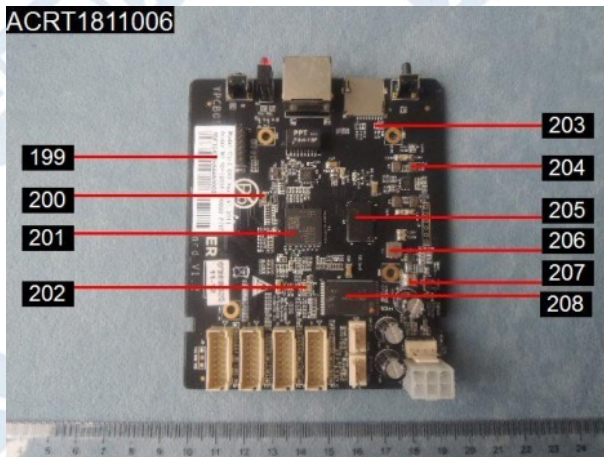
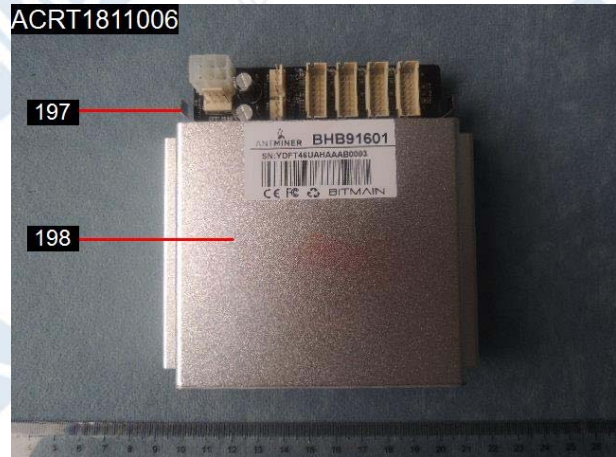
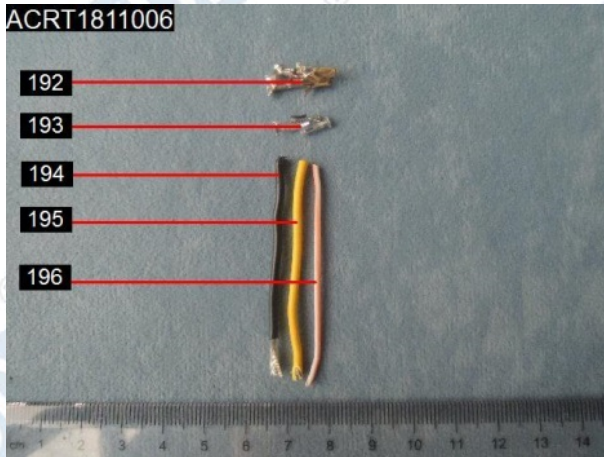
# VERIFICATION REPORT



# VERIFICATION REPORT

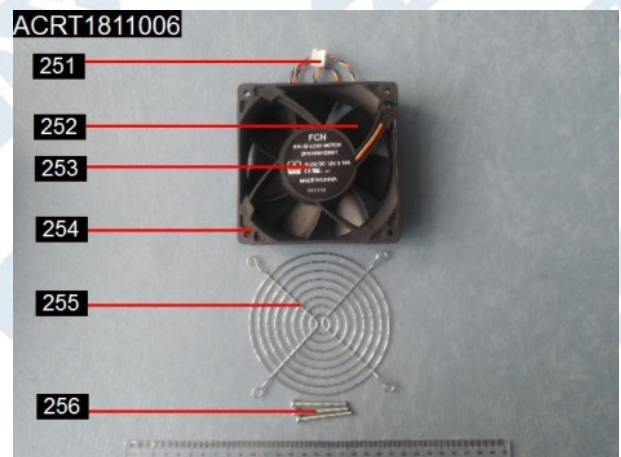
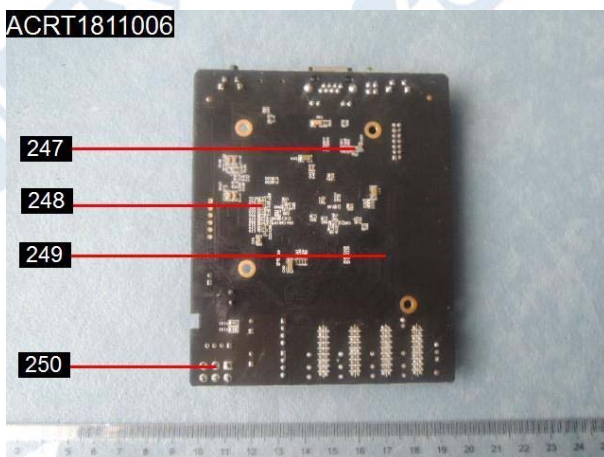
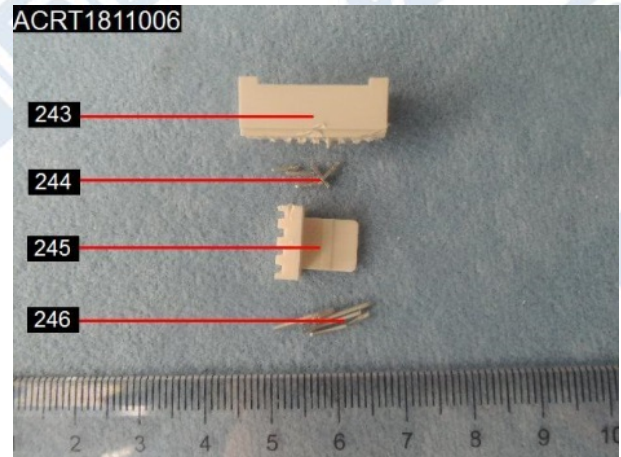
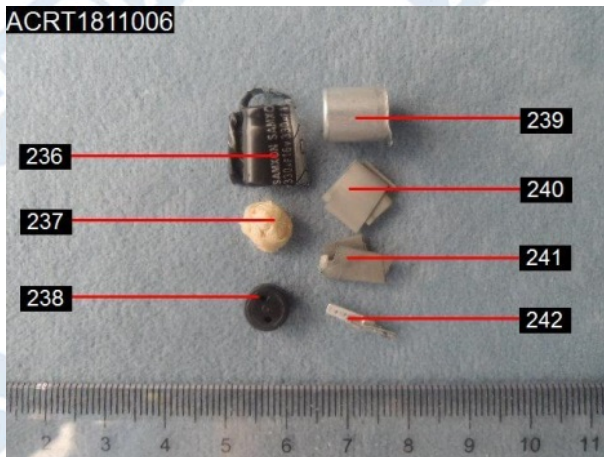
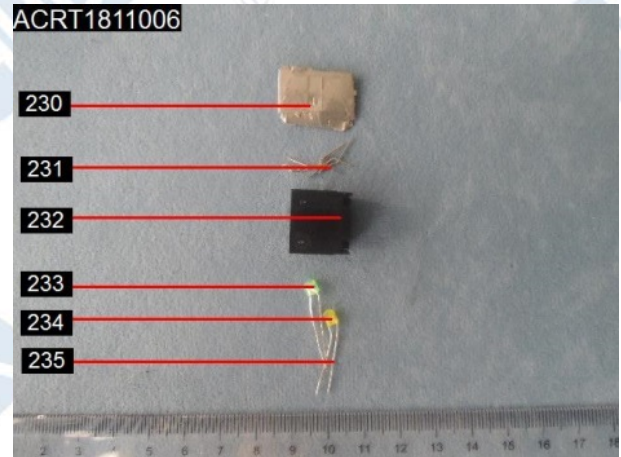
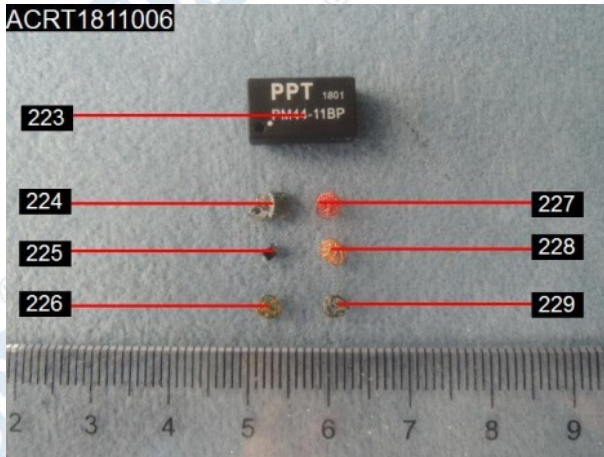


# VERIFICATION REPORT

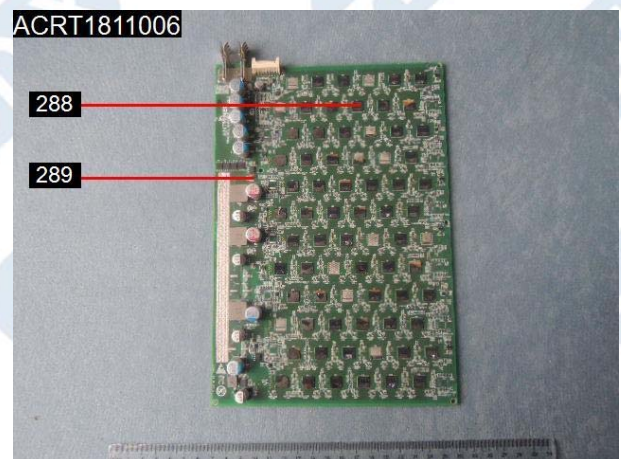
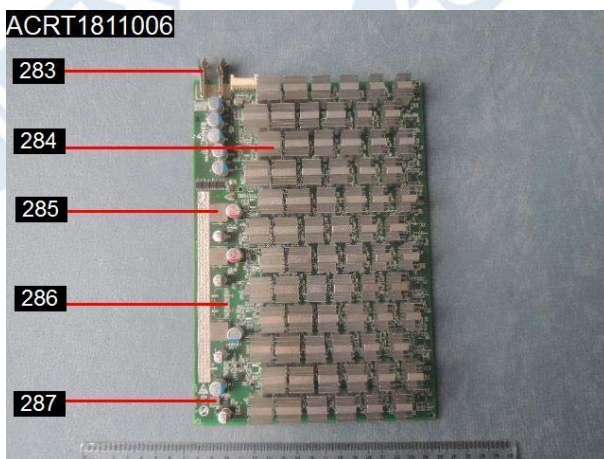
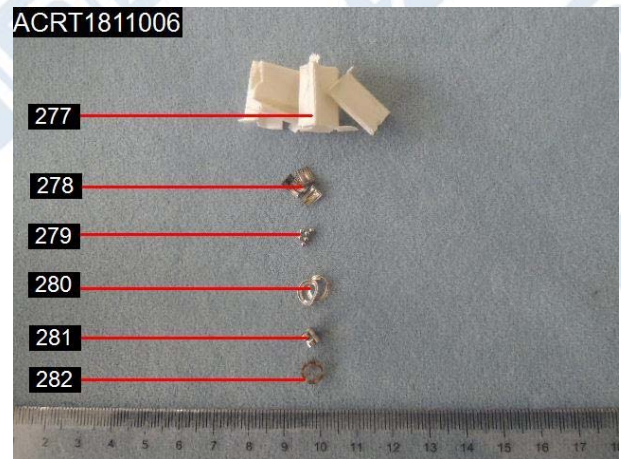
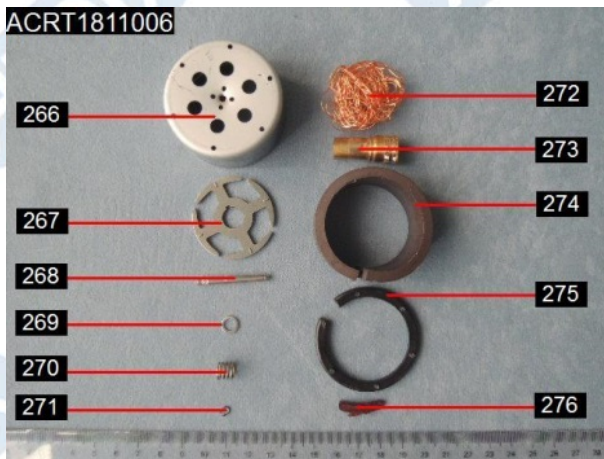
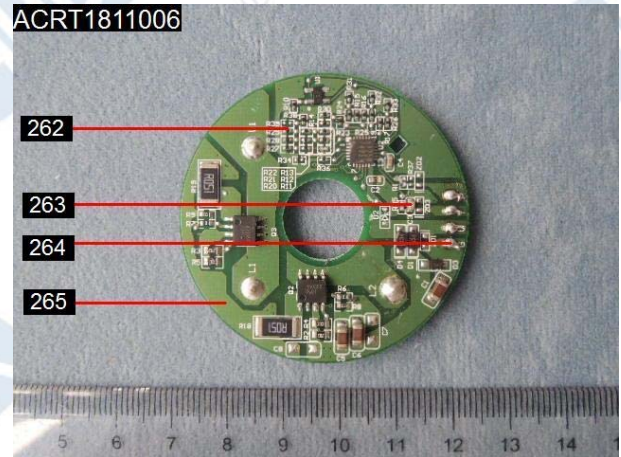
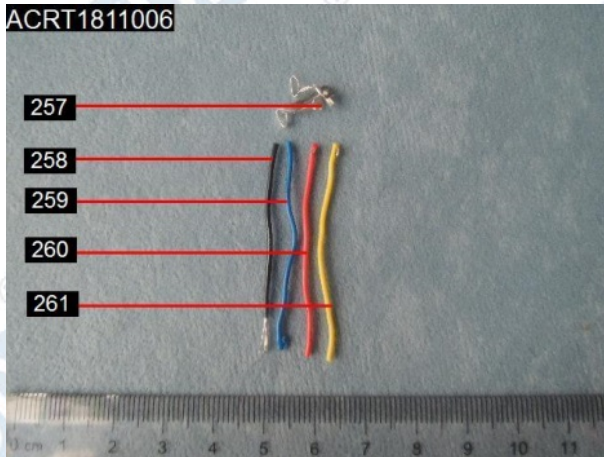




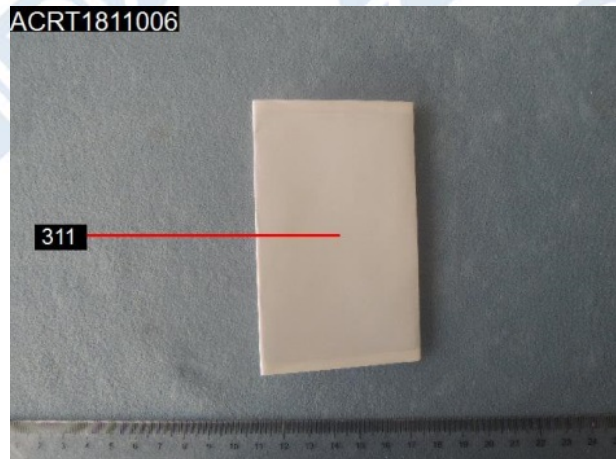
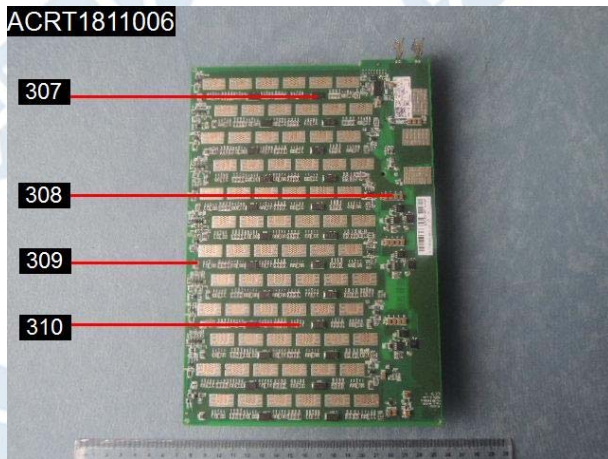
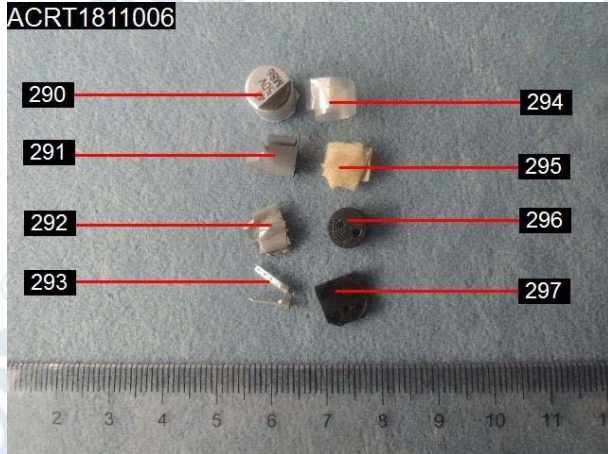
# VERIFICATION REPORT



# VERIFICATION REPORT



# VERIFICATION REPORT



\*\*\* End of report \*\*\*